

NO. OF COPIES RECEIVED	
DISTRIBUTION	
SANTA FE	
FILE	
U.S.G.S.	
LAND OFFICE	
OPERATOR	

NEW MEXICO OIL CONSERVATION COMMISSION

30-031-20714
Form C-101
Revised 1-1-65

5A. Indicate Type of Lease
STATE FEE

5. State Oil & Gas Lease No.

APPLICATION FOR PERMIT TO DRILL, DEEPEN, OR PLUG BACK

1a. Type of Work
b. Type of Well DRILL DEEPEN PLUG BACK
OIL WELL GAS WELL OTHER
SINGLE ZONE MULTIPLE ZONE

2. Name of Operator
Tesoro Petroleum Corp.

3. Address of Operator
2000 1st of Denver Plaza, Denver, CO 80202

4. Location of Well
UNIT LETTER "P" LOCATED 705 FEET FROM THE South LINE
AND 1,650 FEET FROM THE East LINE OF SEC. 1 TWP. 17N RGE. 9W NMPM

7. Unit Agreement Name

8. Firm or Lease Name
Santa Fe Railroad "A"

9. Well No.
91

10. Field and Pool, or Wildcat
South Hospah Field
52 Joint

12. County
McKinley

19. Proposed Depth
1670' (GL)

19A. Formation
Upper Hospah

20. Rotary or C.T.
Rotary

21. Elevations (Show whether DP, RI, etc.)
7,022' (GL)

21A. Kind & Status Plug. Bond
NM Blanket

21B. Drilling Contractor
Salazar

22. Approx. Date Work will start
July 8, 1981

PROPOSED CASING AND CEMENT PROGRAM

SIZE OF HOLE	SIZE OF CASING	WEIGHT PER FOOT	SETTING DEPTH	SACKS OF CEMENT	EST. TOP
12 1/4"	8 5/8"	24#	40ft. (GL)	25 "G"	surface
7 7/8"	5 1/2"	15.5#	1670 ft.	65 "G"	1,270 ft. (GL)

Drill 12 1/4" surface hole to 40', run 1 joint 8 5/8" casing and cement to surface w/25 sacks class "G" w/2% calcium chloride.
Drill 7 7/8" hole to 1670 ft. (GL). Run Induction Electric Log (IES) w/SP and GR; and Formation Density Log (FDC) w/GR and Caliper, from TD to 1270 ft. If logs indicate Upper Hospah zone to be productive, run 5 1/2" casing from TD to surface. Cement 5 1/2" casing from TD to 300 ft. above Upper Hospah top. Perforate Upper Hospah w/2 JSPF and flow or swab well back. No stimulation is anticipated. Install pumping unit and put well on production. If the well appears non-productive, cement plugs will be set at known producing formations and at the surface.

No additional surface disturbance is anticipated in doing this work.

APPROVAL VALID
FOR 90 DAYS UNLESS
DRILLING COMMENCED,

EXPIRES 1-2-82



IN ABOVE SPACE DESCRIBE PROPOSED PROGRAM; IF PROPOSAL IS TO DEEPEN OR PLUG BACK, GIVE DATA ON PRESENT PRODUCTIVE ZONE AND PROPOSED NEW PROGRAM.

I hereby certify that the information above is true and complete to the best of my knowledge and belief.

Signed James E. Steppinski Title Production Engineer Date 6/17/81

(This space for State Use)

APPROVED BY Frank J. Long TITLE SUPERVISOR DISTRICT # 3 DATE JUL 2 - 1981

CONDITIONS OF APPROVAL, IF ANY:

All distances must be from the outer boundaries of the Section.

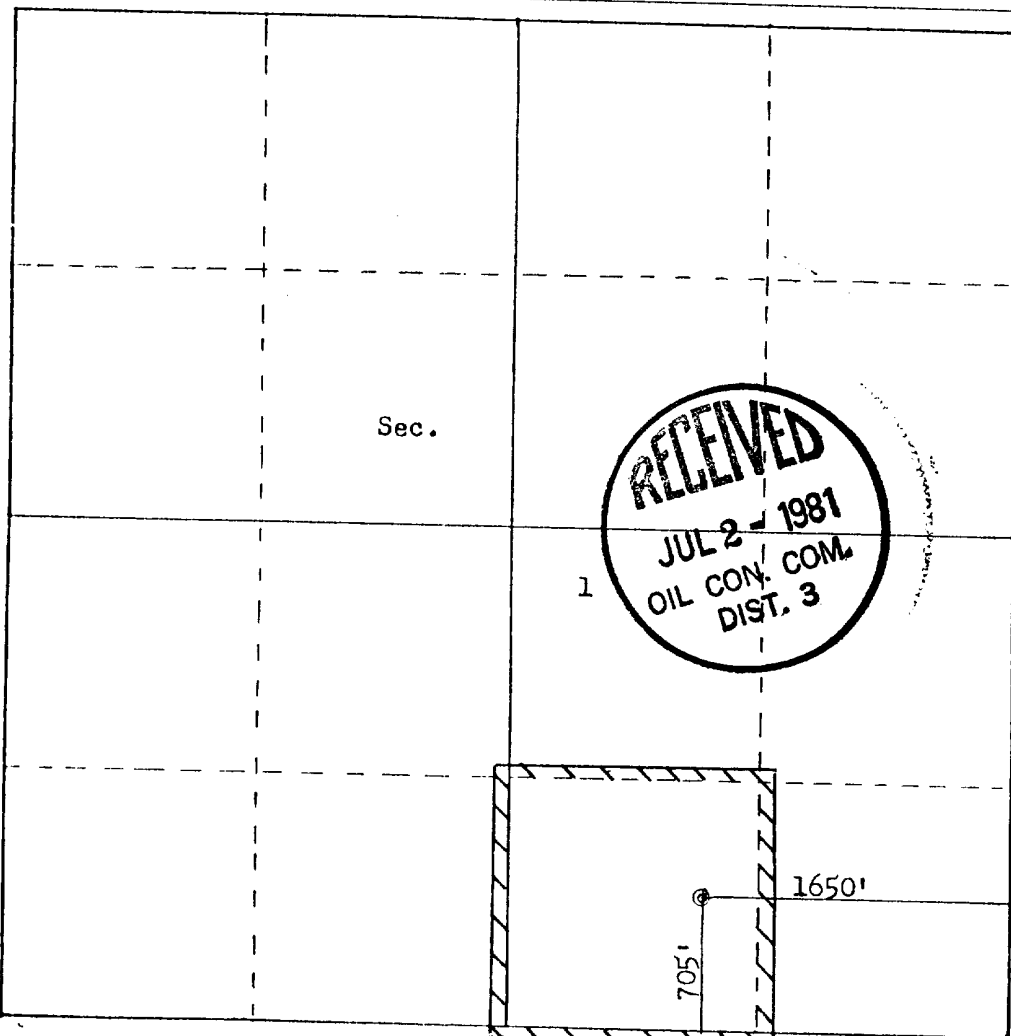
Operator TESORO PETROLEUM CORPORATION			Lease SANTA FE RAILROAD "A"		Well No. 91
Unit Letter P	Section 1	Township 17N	Range 9W	County McKinley	
Actual Footage Location of Well: 705 feet from the South line and 1650 feet from the East line					
Ground Level Elev: 7022	Producing Formation Upper Hospah Sand		Pool Upper Sand	Dedicated Acreage: 4052 Acres	

- Outline the acreage dedicated to the subject well by colored pencil or hachure marks on the plat below.
- If more than one lease is dedicated to the well, outline each and identify the ownership thereof (both as to working interest and royalty). One Lease
- If more than one lease of different ownership is dedicated to the well, have the interests of all owners been consolidated by communitization, unitization, force-pooling, etc?

Yes No If answer is "yes," type of consolidation _____

If answer is "no," list the owners and tract descriptions which have actually been consolidated. (Use reverse side of this form if necessary.) _____

No allowable will be assigned to the well until all interests have been consolidated (by communitization, unitization, forced-pooling, or otherwise) or until a non-standard unit, eliminating such interests, has been approved by the Commission.



Scale: 1"=100'



CERTIFICATION

I hereby certify that the information contained herein is true and complete to the best of my knowledge and belief.

James Stepinski

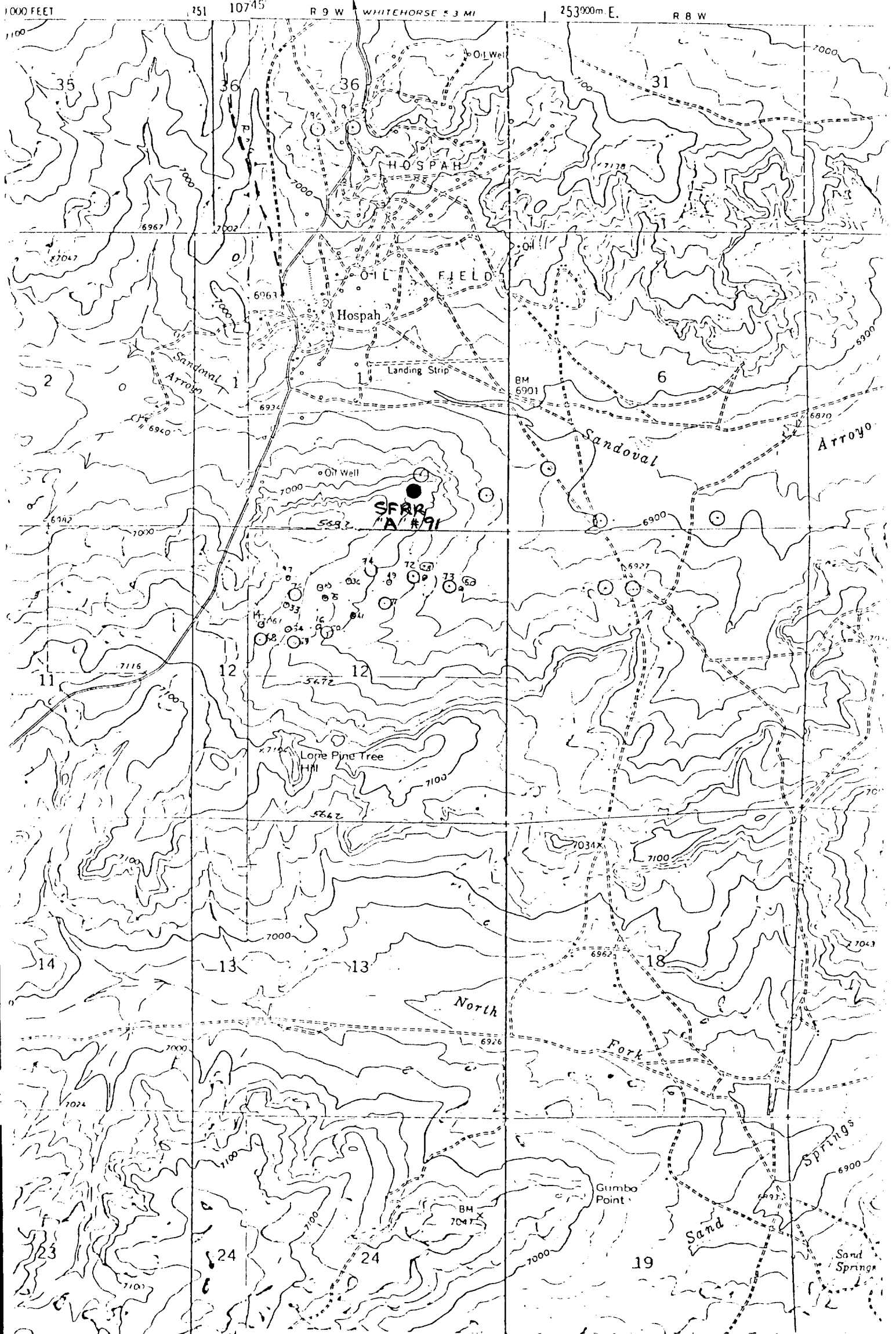
Name
James Stepinski
Position
Production Engineer
Company
Tesoro Petroleum Corp.

Date
7/1/81

I hereby certify that the well location shown on this plat was plotted from field notes of actual surveys made by me or under my supervision, and that the same is true and correct to the best of my knowledge and belief.

Date Surveyed
June 12, 1981
Registered Professional Engineer and Land Surveyor
Fred B. Kerr Jr.
Fred B. Kerr Jr.
Certificate No. _____

RECEIVED R. FERR



Vicinity Map for
TESORO PETROLEUM CORP. #91 SANTA FE RR "A"
705'FSL 1650'FEL Sec. 1-T17N-R9W
MCKINLEY COUNTY, NEW MEXICO