

| | |
|------------------------|--|
| NO. OF COPIES RECEIVED | |
| DISTRIBUTION | |
| SANTA FE | |
| FILE | |
| U.S.G.S. | |
| LAND OFFICE | |
| OPERATOR | |

NEW MEXICO OIL CONSERVATION COMMISSION

30-031-20715
Form C-101
Revised 1-1-65

| | |
|--------------------------------|--|
| 5A. Indicate Type of Lease | |
| STATE <input type="checkbox"/> | FEED <input checked="" type="checkbox"/> |
| 5. State Oil & Gas Lease No. | |

APPLICATION FOR PERMIT TO DRILL, DEEPEN, OR PLUG BACK

| | | | |
|--|--|---|--|
| 1a. Type of Work | | 7. Unit Agreement Name | |
| b. Type of Well DRILL <input checked="" type="checkbox"/> DEEPEN <input type="checkbox"/> PLUG BACK <input type="checkbox"/> | | 8. Farm or Lease Name Santa Fe Railroad 'A' | |
| c. Well Type OIL WELL <input checked="" type="checkbox"/> GAS WELL <input type="checkbox"/> OTHER <input type="checkbox"/> | | 9. Well No. 92 | |
| 2. Name of Operator Tesoro Petroleum Corp. | | 10. Field and Pool, or Wildcat South Hospah Field <i>Lower Sand</i> | |
| 3. Address of Operator 2000 1st of Denver Plaza, Denver, CO 80202 | | 11. <i>52 Joint</i> | |
| 4. Location of Well UNIT LETTER "P" LOCATED 1060' FEET FROM THE South LINE AND 1550' FEET FROM THE East LINE OF SEC. 1 TWP. 17N RGE. 9W NMPM | | 12. County McKinley | |
| 19. Proposed Depth 1,700 ft. GL | | 19A. Formation Lower Hospah | |
| 20. Rotary or C.T. Rotary | | 21. Elevations (Show whether DT, RT, etc.) 6,997 (GL) | |
| 21A. Kind & Status Plug. Bond NM Blanket | | 21B. Drilling Contractor Salazar | |
| 22. Approx. Date Work will start July 15, 1981 | | | |

PROPOSED CASING AND CEMENT PROGRAM

| SIZE OF HOLE | SIZE OF CASING | WEIGHT PER FOOT | SETTING DEPTH | SACKS OF CEMENT | EST. TOP |
|--------------|----------------|-----------------|---------------|-----------------|-----------|
| 12 1/4" | 8 5/8" | 24# | 40ft. (GL) | 25 "G" | surface |
| 7 7/8" | 5 1/2" | 15.5# | 1700 ft. (GL) | 65 "G" | 1,300 ft. |

Drill 12 1/4" surface hole to 40', run 1 joint 8 5/8" casing and cement to surface w/25 sacks class "G" w/2% calcium chloride.

Drill 7 7/8" hole to 1700' (GL). Run Induction Electric Log (IES) w/SP and GR; and Formation Density Log (FDC) w/GR and Caliper, from TD to 1300 ft. If logs indicate Lower Hospah zone to be productive, run 5 1/2" casing from TD to surface. Cement 5 1/2" casing from TD to 300 ft. above Lower Hospah top. Perforate Lower Hospah w/2 JSPF and flow or swab well back. No stimulation is anticipated. Install pumping unit and put well on production. If the well appears non-productive, cement plugs will be set at known producing formations and at the surface.

No additional surface disturbance is anticipated in doing this work.

APPROVAL VALID
FOR 90 DAYS UNLESS
DRILLING COMMENCED,

EXPIRES 1-2-82

IN ABOVE SPACE, DESCRIBE PROPOSED PROGRAM; IF PROPOSAL IS TO DEEPEN OR PLUG BACK, GIVE DATA ON PRESENT PRODUCTION ZONE & PROPOSED NEW PRODUCTION ZONE. GIVE BLOWOUT PREVENTER PROGRAM, IF ANY.

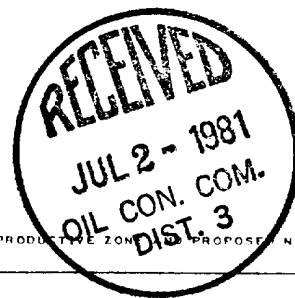
I hereby certify that the information above is true and complete to the best of my knowledge and belief.

Signed James E. Stepien Title Production Engineer Date 6/17/81

(This space for State Use)

APPROVED BY Frank J. Long TITLE SUPERVISOR DISTRICT # 3 DATE JUL 2 - 1981

CONDITIONS OF APPROVAL, IF ANY:



All distances must be from the outer boundaries of the Section.

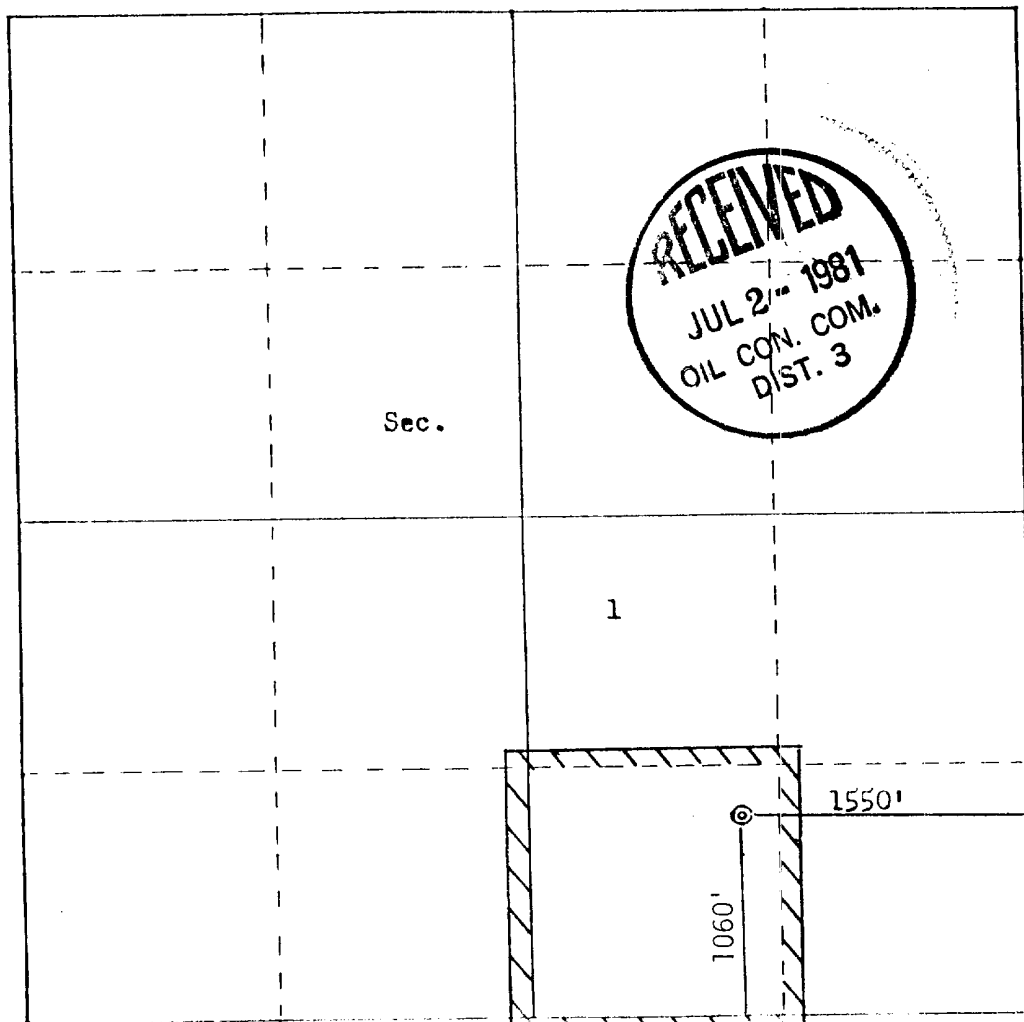
| | | | | | |
|--|---|------------------------|---------------------------------------|---------------------------|--|
| Operator TESORO PETROLEUM CORPORATION | | | Lease SANTA FE RAILROAD "A" | | Well No. 92 |
| Unit Letter P | Section 1 | Township 17N | Range 9W | County McKinley | |
| Actual Footage Location of Well: 1060 feet from the South line and 1550 feet from the East line | | | | | |
| Ground Level Elev: 6997 | Producing Formation Upper Hospah Sand | | Pool Upper Sand | | Dedicated Acreage: 40.52 Acres |

1. Outline the acreage dedicated to the subject well by colored pencil or hachure marks on the plat below.
2. If more than one lease is dedicated to the well, outline each and identify the ownership thereof (both as to working interest and royalty). **One Lease**
3. If more than one lease of different ownership is dedicated to the well, have the interests of all owners been consolidated by communitization, unitization, force-pooling, etc?

☐ Yes ☐ No If answer is "yes," type of consolidation _____

If answer is "no," list the owners and tract descriptions which have actually been consolidated. (Use reverse side of this form if necessary.) _____

No allowable will be assigned to the well until all interests have been consolidated (by communitization, unitization, forced-pooling, or otherwise) or until a non-standard unit, eliminating such interests, has been approved by the Commission.



CERTIFICATION

I hereby certify that the information contained herein is true and complete to the best of my knowledge and belief.

James Stepinski
Name

James Stepinski

Position

Production Engineer

Company

Tesoro Petroleum Corp.

Date

7/1/81

I hereby certify that the well location shown on this plat was plotted from field notes of actual surveys made by me or under my supervision, and that the same is true and correct to the best of my knowledge and belief.

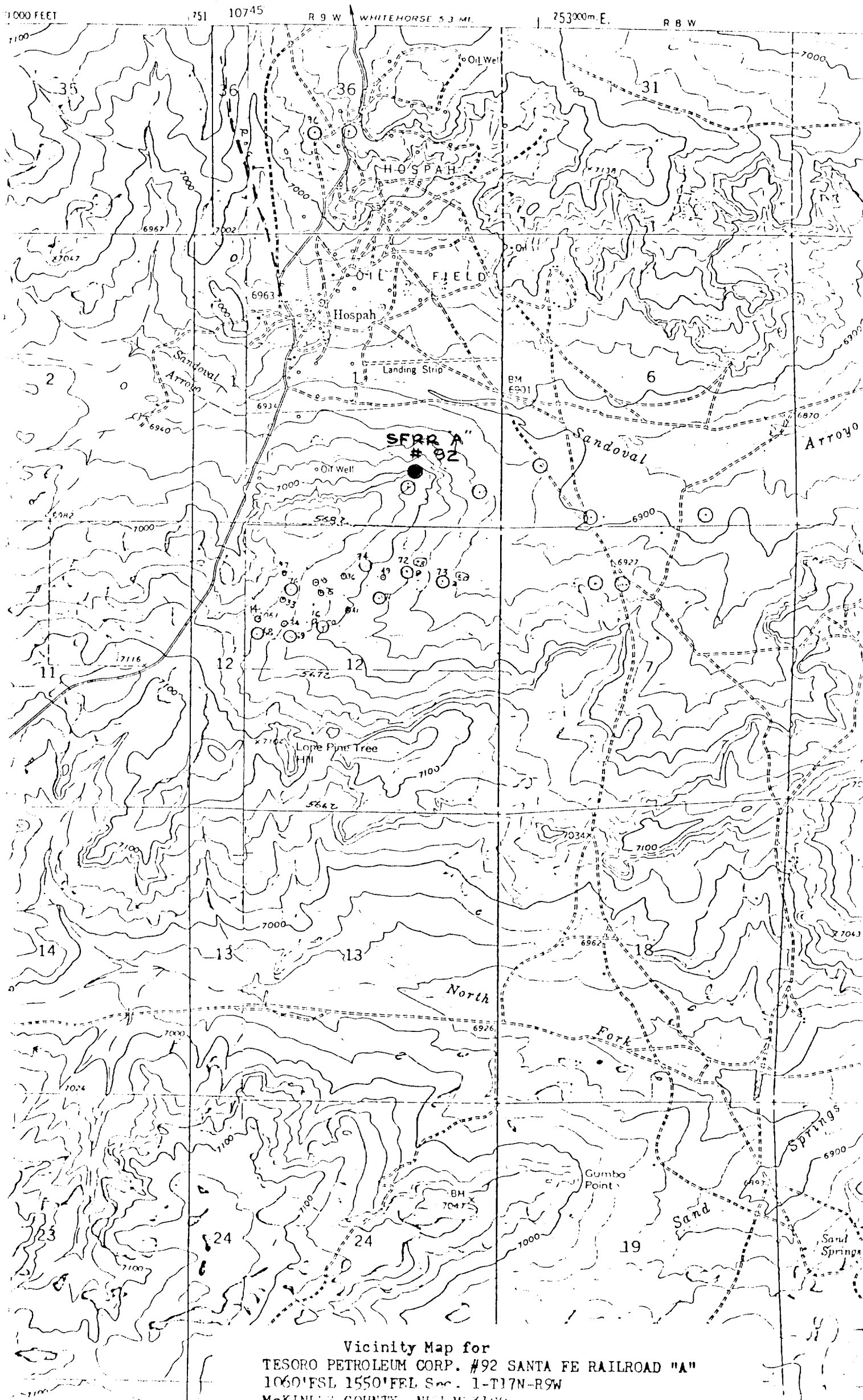
Date Surveyed

June 12, 1981

Registered Professional Engineer and Land Surveyor

Fred B. Kerr Jr.
Fred B. Kerr Jr.

Certification No.



Vicinity Map for
TESORO PETROLEUM CORP. #92 SANTA FE RAILROAD "A"
1060'FSL 1550'FEL Sec. 1-T17N-R9W
MCKINLEY COUNTY, NEW MEXICO