

NO. OF COPIES RECEIVED	
DISTRIBUTION	
SANTA FE	
FILE	
U.S.G.S.	
LAND OFFICE	
OPERATOR	

NEW MEXICO OIL CONSERVATION COMMISSION

30-031-20716
Form C-101
Revised 1-1-65

5A. Indicate Type of Lease
STATE <input type="checkbox"/> FEE <input checked="" type="checkbox"/>
5. State Oil & Gas Lease No.

APPLICATION FOR PERMIT TO DRILL, DEEPEN, OR PLUG BACK

1a. Type of Work		7. Unit Agreement Name	
b. Type of Well DRILL <input checked="" type="checkbox"/> DEEPEN <input type="checkbox"/> PLUG BACK <input type="checkbox"/>		8. Farm or Lease Name Santa Fe Railroad 'A'	
2. Name of Operator Tesoro Petroleum Corp.		9. Well No. 93	
3. Address of Operator 2000 1st of Denver Plaza, Denver, CO 80202		10. Field and Pool Upper sand South Hospah Field	
4. Location of Well UNIT LETTER <u>Lot 10 P</u> LOCATED <u>660</u> FEET FROM THE <u>South</u> LINE AND <u>375</u> FEET FROM THE <u>East</u> LINE OF SEC. <u>1</u> TWP. <u>17N</u> RGE. <u>9W</u> NMPM		12. County McKinley	
19. Proposed Depth 1625' (GL)		19A. Formation Upper Hospah	
20. Rotary or C.T. Rotary		21. Elevation (Show whether DT, RT, etc.) 6942' GL	
21A. Kind & Status Plug, Bond NM Blanket		21B. Drilling Contractor Salazar	
22. Approx. Date Work will start July 18, 1981			

PROPOSED CASING AND CEMENT PROGRAM

SIZE OF HOLE	SIZE OF CASING	WEIGHT PER FOOT	SETTING DEPTH	SACKS OF CEMENT	EST. TOP
12 1/4"	8 5/8"	24#	40 ft. (GL)	25 "G"	surface
7 7/8"	5 1/2"	15.5#	1625 ft. (GL)	65 "G"	1225' (GL)

Drill 12 1/4" surface hole to 40', run 1 joint 8 5/8" casing and cement to surface w/25 sacks class "G" w/2% calcium chloride. Drill 7 7/8" hole to 1625 ft. (GL). Run Induction Electric Log (IES) w/SP and GR; and Formation Density Log (FDC) w/GR and Caliper; from TD to 1,225 ft. If logs indicate Upper Hospah zone to be productive, run 5 1/2" casing from TD to surface. Cement 5 1/2" casing from TD to 300 ft. above Upper Hospah top. Perforate Upper Hospah w/2 JSPF and flow or swab well back. No stimulation is anticipated. Install pumping unit and put well on production. If the well appears non-productive, cement plugs will be set at known producing formations and at the surface.

No additional surface disturbance is anticipated in doing this work.

APPROVAL VALID
FOR 90 DAYS UNLESS
DRILLING COMMENCED,

EXPIRES 1-2-82

IN ABOVE SPACE DESCRIBE PROPOSED PROGRAM: IF PROPOSED TO DEEPEN OR PLUG BACK, GIVE DATA ON PRESENT PRODUCTION RATE AND PROPOSED NEW PRODUCTION RATE. GIVE FLOWOUT PREVENTER PROGRAM, IF ANY.

I hereby certify that the information above is true and complete to the best of my knowledge and belief.

Signed James E. Stepinich Title Production Engineer Date 6/17/81

(This space for State Use)

APPROVED BY Frank T. Gray TITLE SUPERVISOR DISTRICT # 3 DATE JUL 2 - 1981

CONDITIONS OF APPROVAL, IF ANY:



All distances must be from the outer boundaries of the Section.

Operator TESORO PETROLEUM CORPORATION			Lease SANTA FE RAILROAD "A"		Well No. 93
Unit Letter Lot #10	Section 1	Township 17N	Range 9W	County McKinley	
Actual Footage Location of Well:					
660 feet from the South line and		375 feet from the East line			
Ground Level Elev. 6942	Producing Formation Upper Hoshah Sand		Pool Upper Sand	Dedicated Acreage: 4052 Acres	

1. Outline the acreage dedicated to the subject well by colored pencil or hatchure marks on the plat below.
2. If more than one lease is dedicated to the well, outline each and identify the ownership thereof (both as to working interest and royalty).
One Lease
3. If more than one lease of different ownership is dedicated to the well, have the interests of all owners been consolidated by communitization, unitization, force-pooling, etc?

☐ Yes ☐ No If answer is "yes," type of consolidation _____

If answer is "no," list the owners and tract descriptions which have actually been consolidated. (Use reverse side of this form if necessary.) _____

No allowable will be assigned to the well until all interests have been consolidated (by communitization, unitization, forced-pooling, or otherwise) or until a non-standard unit, eliminating such interests, has been approved by the Commission.

Sec.	1		

Scale: 1"=1000'

CERTIFICATION

I hereby certify that the information contained herein is true and complete to the best of my knowledge and belief.

James Stepinski
Name
James Stepinski

Position
Production Engineer

Company
Tesoro Petroleum Corp.

Date
7/1/81

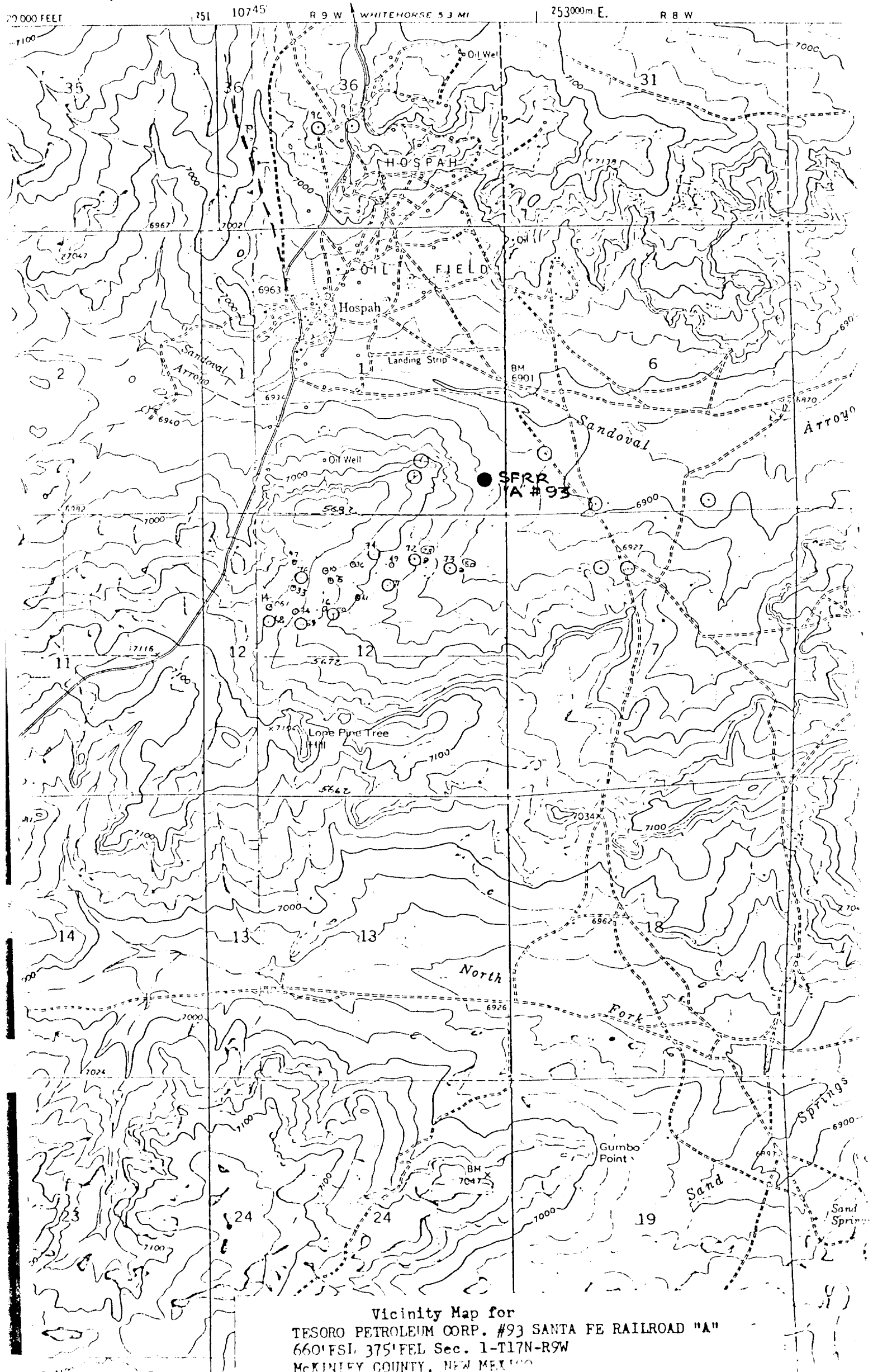
I hereby certify that the well location shown on this plat was plotted from field notes of actual surveys made by me or under my supervision, and that the same is true and correct to the best of my knowledge and belief.

Date Surveyed
June 12, 1981

Registered Professional Engineer and Land Surveyor

Fred B. Kerr Jr.
Fred B. Kerr Jr.

Certificate No. **1000**
FRED B. KERR, JR.



Vicinity Map for
TESORO PETROLEUM CORP. #93 SANTA FE RAILROAD "A"
660' FSL 375' FEL Sec. 1-T17N-R9W
MCKINLEY COUNTY, NEW MEXICO