

NO. OF COPIES RECEIVED	
DISTRIBUTION	
SANTA FE	
FILE	
U.S.G.S.	
LAND OFFICE	
OPERATOR	

NEW MEXICO OIL CONSERVATION COMMISSION

30-031-20717

Form C-101
Revised 1-1-65

5A. Indicate Type of Lease
STATE <input type="checkbox"/> FEE <input checked="" type="checkbox"/>

5. State Oil & Gas Lease No.

7. Unit Agreement Name

8. Farm or Lease Name

Hospah Sand Unit

9. Well No.

96

10. Field and Pool, or Wildcat

Hospah ~~Field~~ Upper Sand

12. County

McKinley

APPLICATION FOR PERMIT TO DRILL, DEEPEN, OR PLUG BACK

a. Type of Work

DRILL ☒

DEEPEN ☐

PLUG BACK ☐

b. Type of Well

OIL ☒

GAS ☐

OTHER

SINGLE ☒

MULTIPLE ☐

c. Name of Operator

Tesoro Petroleum Corp.

d. Address of Operator

2000 1st. of Denver Plaza, Denver, CO 80202

e. Location of Well

UNIT LETTER "K" LOCATED 1,850 FEET FROM THE South LINE

RD 1,875 FEET FROM THE West LINE OF SEC. 36 TWP. 18N RGE. 9W NMPM

f. Elevation (Show whether DF, RT, etc.)

7049' GL

21A. Kind & Status Plug. Bond

NM Blanket

19. Proposed Depth

1790 ft.

19A. Formation

Upper Hospah

20. Rotary or C.T.

rotary

21B. Drilling Contractor

Salazar

22. Approx. Date Work will start

July 6, 1981

PROPOSED CASING AND CEMENT PROGRAM

SIZE OF HOLE	SIZE OF CASING	WEIGHT PER FOOT	SETTING DEPTH	SACKS OF CEMENT	EST. TOP
12 1/4"	8 5/8"	24#	40 ft. (GL)	25 "G"	surface
7 7/8"	5 1/2"	15.5#	1790 ft. (GL)	65 "G"	1400 ft. (GL)

Drill 12 1/4" surface hole to 40', run 1 joint 8 5/8" casing and cement to surface w/25 sacks class "G" w/2% calcium chloride.

Drill 7 7/8" hole to 1790 ft. (GL). Run IES (Induction Electric Log) w/SP & GR and FDC (Formation Density Log) w/GR and Caliper from TD to 1390 ft. If logs indicate Upper Hospah zone to be productive, run 5 1/2" casing from TD to surface. Cement 5 1/2" casing from TD 300 ft. above Upper Hospah top. Perforate Upper Hospah formation w/2 JSPF and flow or swab well back. No stimulation is anticipated.

Install pumping unit and put well on production. If the well appears non-productive, cement plugs will be set at known producing formations and at the surface.

No additional surface disturbance is anticipated in doing this work.

APPROVAL VALID
FOR 90 DAYS UNLESS
DRILLING COMMENCED,

EXPIRES 1-2-81



IN ABOVE SPACE DESCRIBE PROPOSED PROGRAM; IF PROPOSAL IS TO DEEPEN OR PLUG BACK, GIVE DATA ON PRESENT PRODUCTIVE ZONE AND PROPOSED NEW PRODUCTIVE ZONE. GIVE BLOWOUT PREVENTER PROGRAM, IF ANY.

I hereby certify that the information above is true and complete to the best of my knowledge and belief.

Signed James E. Stepinski Title Production Engineer

Date 6/17/81

(This space for State Use)

APPROVED BY

Frank J. Long

TITLE

SUPERVISOR DISTRICT 11

DATE

JUL 2 - 1981

CONDITIONS OF APPROVAL, IF ANY:

All distances must be from the outer boundaries of the Section.

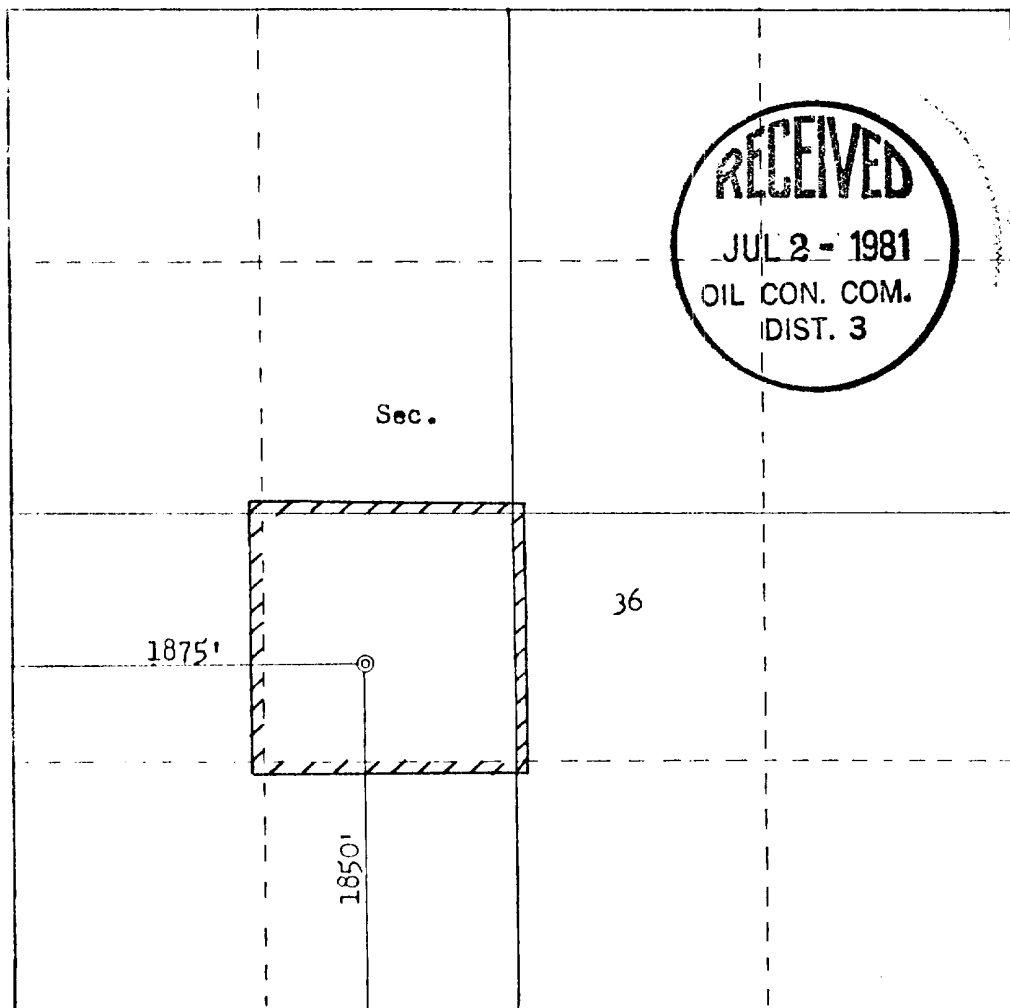
Operator TESORO PETROLEUM CORPORATION			Lease HOSPAL SAND UNIT		Well No. 96
Unit Letter K	Section 36	Township 18N	Range 9W	County McKinley	
Actual Footage Location of Well:					
1850 feet from the South line and		1875 feet from the West line			
Ground Level Elev: 7049	Producing Formation Upper Hospah Sand	Pool Upper Sand	Dedicated Acreage: 40 Acres		

1. Outline the acreage dedicated to the subject well by colored pencil or hachure marks on the plat below.
2. If more than one lease is dedicated to the well, outline each and identify the ownership thereof (both as to working interest and royalty). **One Lease**
3. If more than one lease of different ownership is dedicated to the well, have the interests of all owners been consolidated by communitization, unitization, force-pooling, etc?

☒ Yes ☐ No If answer is "yes," type of consolidation Unitization

If answer is "no," list the owners and tract descriptions which have actually been consolidated. (Use reverse side of this form if necessary.)

No allowable will be assigned to the well until all interests have been consolidated (by communitization, unitization, forced-pooling, or otherwise) or until a non-standard unit, eliminating such interests, has been approved by the Commission.



CERTIFICATION

I hereby certify that the information contained herein is true and complete to the best of my knowledge and belief.

James Stepinski
Name

James Stepinski

Position
Production Engineer

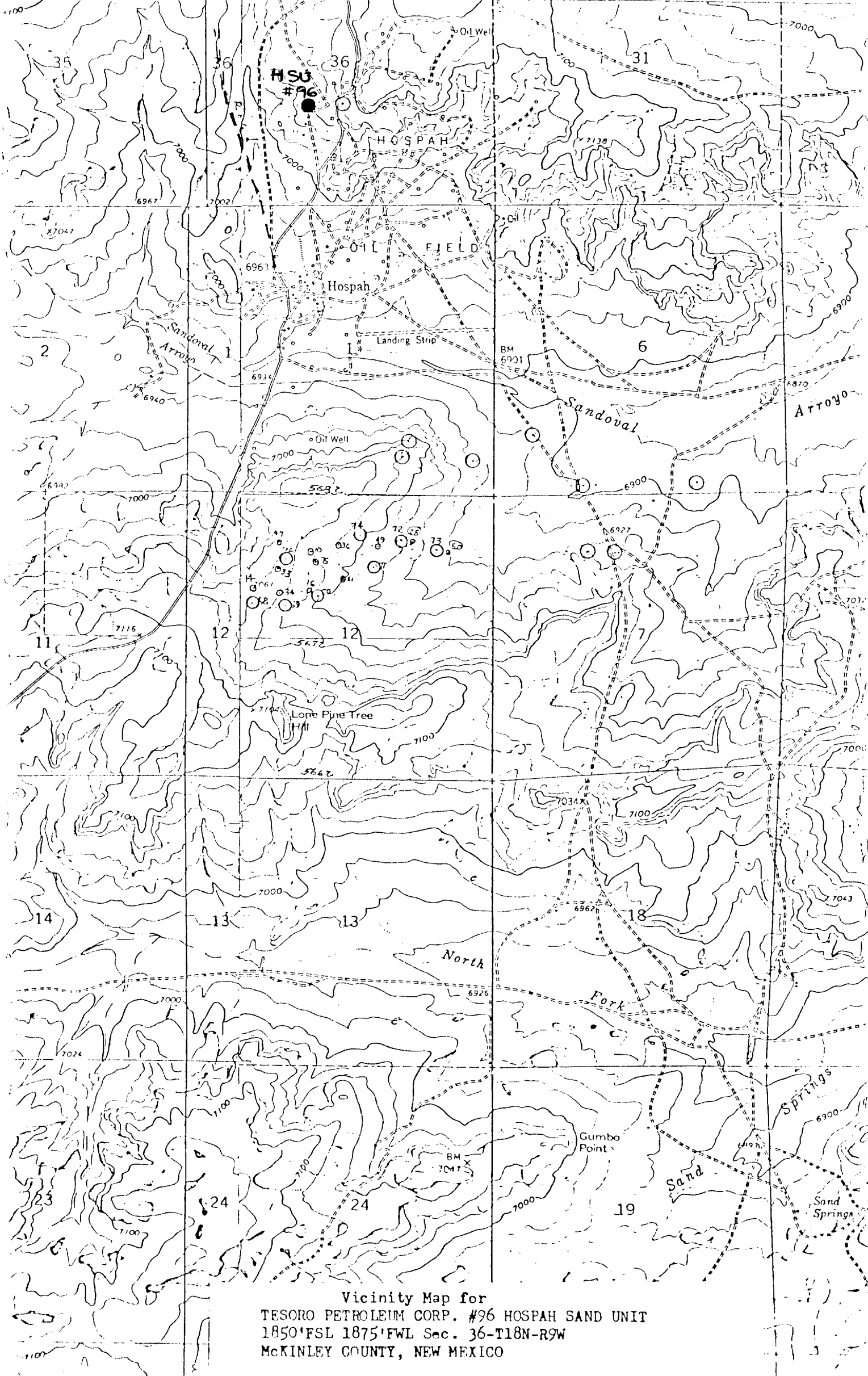
Company
Tesoro Petroleum Corp.

Date
7/1/81

I hereby certify that the well location shown on this plat was plotted from field notes of actual surveys made by me or under my supervision, and that the same is true and correct to the best of my knowledge and belief.

Date Surveyed
June 22, 1981
Registered Professional Engineer
and Land Surveyor

Fred B. Kerr Jr.
Fred B. Kerr Jr.
Certificate No.



Vicinity Map for
TESORO PETROLEUM CORP. #96 HOSPAAH SAND UNIT
1850'FSL 1875'FWL Sec. 36-T18N-R9W
MCKINLEY COUNTY, NEW MEXICO