

UNITED STATES  
DEPARTMENT OF THE INTERIOR  
GEOLOGICAL SURVEY

## APPLICATION FOR PERMIT TO DRILL, DEEPEN, OR PLUG BACK

1a. TYPE OF WORK DRILL <input checked="" type="checkbox"/> DEEPEN <input type="checkbox"/> PLUG BACK <input type="checkbox"/>		5. LEASE DESIGNATION AND SERIAL NO. Fed. NM-052931	
b. TYPE OF WELL OIL WELL <input checked="" type="checkbox"/> GAS WELL <input type="checkbox"/> OTHER <input type="checkbox"/>		6. IF INDIAN, ALLOTTEE OR TRIBE NAME Navajo	
2. NAME OF OPERATOR Tesoro Petroleum Corp.		7. UNIT AGREEMENT NAME Hanson	
3. ADDRESS OF OPERATOR 2000 First of Denver Plaza, Denver, CO 80202		8. FARM OR LEASE NAME Hanson	
4. LOCATION OF WELL (Report location clearly and in accordance with any State requirements.) At surface 340' FSL X 1655' FEL At proposed prod. zone Same		9. WELL NO. 38	
14. DISTANCE IN MILES AND DIRECTION FROM NEAREST TOWN OR POST OFFICE Post office 7 miles north of site		10. FIELD AND POOL, OR WILDCAT South Hospah Field	
15. DISTANCE FROM PROPOSED* 340' north of SFRR LOCATION TO NEAREST PROPERTY OR LEASE LINE, FT. (Also to nearest drlg. unit line, if any.) lease		11. SEC., T., R., M., OR BLK. AND SURVEY OR AREA Sec. 6-T17N-R8W	
16. NO. OF ACRES IN LEASE 511.94+		12. COUNTY OR PARISH McKinley	
17. NO. OF ACRES ASSIGNED 40		13. STATE NM	
18. DISTANCE FROM PROPOSED LOCATION* 475' SE of TO NEAREST WELL, DRILLING, COMPLETED, OR APPLIED FOR, ON THIS LEASE, FT. Hanson #27 (U. Hos- pah well)		19. PROPOSED DEPTH 2720' (GL)	
20. ROTARY OR CABLE TOOLS Rotary		21. APPROX. DATE WORK WILL START* August 10, 1981	

## PROPOSED CASING AND CEMENTING PROGRAM

SIZE OF HOLE	SIZE OF CASING	WEIGHT PER FOOT	SETTING DEPTH	QUANTITY OF CEMENT
12 1/4"	8 5/8"	24#	160' (GL)	110 sacks "G" to surface
7 7/8"	5 1/2"	15.5#	2720' (GL)	200 sacks "G", 300' over U. Hospah

- Drill 12 1/4" hole to 160'; run 8 5/8" csg. to 160' and cement to surface w/125 sacks "G" cmt. w/2% Calcium Chloride.
- Drill out w/7 7/8" bit to 2720 ft. (GL). Run Induction Electric Log (IES) w/SP & GR; and neutron-density (CNL-FDC) logs w/GR and Caliper from TD to 1400 ft. If logs indicate potential production in either the Dakota or Upper Hospah Formations, run 5 1/2" csg. from TD to surface. Cement csg. w/200 sks. "G" cmt. from TD to 300' over Upper Hospah top. Perforate Dakota or U. Hospah w/2 JSPF and flow or swab well back. Put on test. If well appears non-commercial, cement plugs will be set at known producing formations and at the surface.

No additional surface disturbance is anticipated in doing this work.

IN ABOVE SPACE DESCRIBE PROPOSED PROGRAM: If proposal is to deepen or plug back, give data on present productive zone and proposed new productive zone. If proposal is to drill or deepen directionally, give pertinent data on subsurface locations and measured and true vertical depths. Give blowout preventer program, if any.

24.

SIGNED Jim Stepinski TITLE Production Engineer DATE 7/25/81  
(This space for Federal or State office use)

PERMIT NO. \_\_\_\_\_ APPROVAL DATE \_\_\_\_\_

APPROVED BY \_\_\_\_\_ TITLE \_\_\_\_\_ DATE \_\_\_\_\_  
CONDITIONS OF APPROVAL, IF ANY:

## OIL CONSERVATION DIVISION

STATE OF NEW MEXICO  
ENERGY AND MINERALS DEPARTMENT

P. O. BOX 2088

SANTA FE, NEW MEXICO 87501

Form C-107  
Revised 10-1-7

All distances must be from the outer boundaries of the Section.

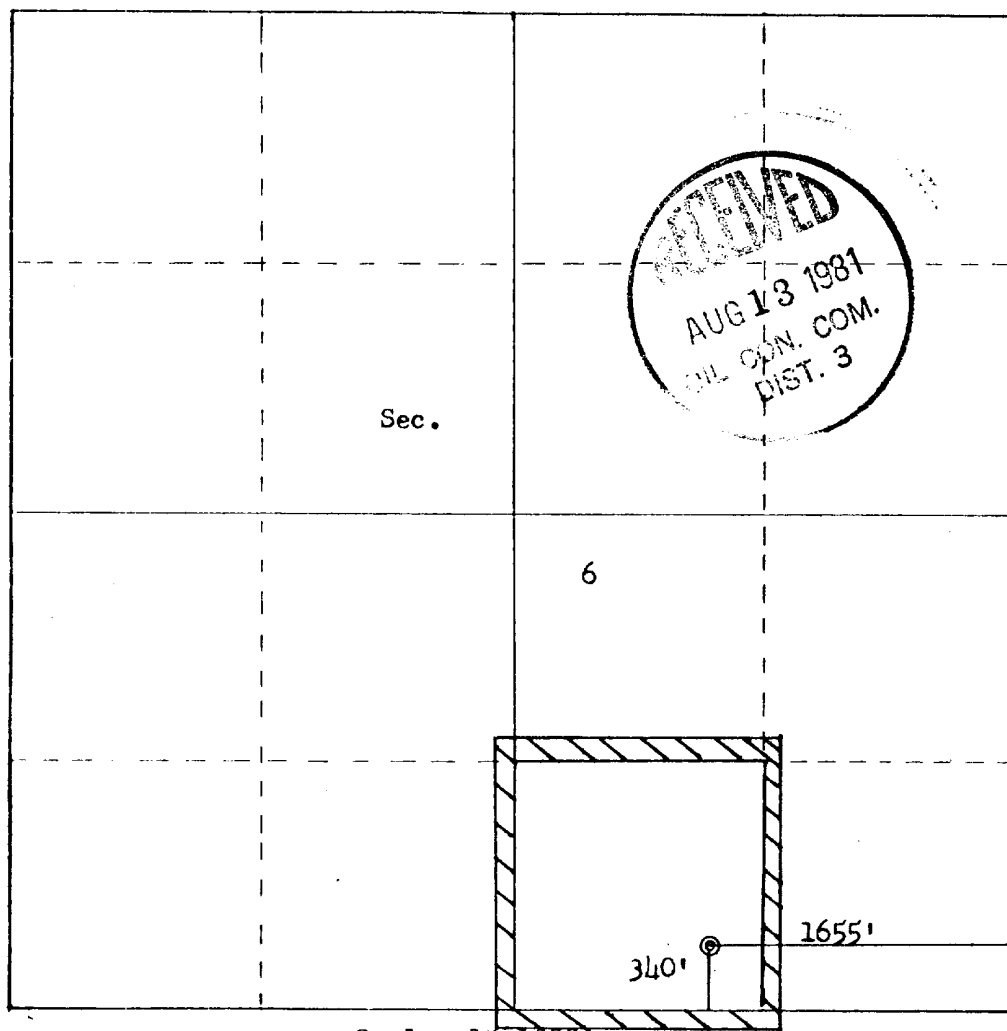
Operator <b>TESORO PETROLEUM CORPORATION</b>			Lease <b>HANSON</b>		Well No. <b>38</b>
Unit Letter <b>0</b>	Section <b>6</b>	Township <b>17N</b>	Range <b>8W</b>	County <b>McKinley</b>	
Actual Footage Location of Well: <b>340</b> feet from the <b>South</b> line and <b>1655</b> feet from the <b>East</b> line					
Ground Level Elev: <b>6889</b>	Producing Formation <b>Dakota</b>	Pool <b>Hopewell Dakota Pool</b>		Dedicated Acreage: <b>40</b>	Acres

1. Outline the acreage dedicated to the subject well by colored pencil or hatchure marks on the plat below.
2. If more than one lease is dedicated to the well, outline each and identify the ownership thereof (both as to working interest and royalty). one lease
3. If more than one lease of different ownership is dedicated to the well, have the interests of all owners been consolidated by communitization, unitization, force-pooling, etc?

☐ Yes ☐ No If answer is "yes," type of consolidation U.S. OIL & GAS LEASE

If answer is "no," list the owners and tract descriptions which have actually been consolidated. (Use reverse side of this form if necessary.)

No allowable will be assigned to the well until all interests have been consolidated (by communitization, unitization, forced-pooling, or otherwise) or until a non-standard unit, eliminating such interests, has been approved by the Commission.



## CERTIFICATION

I hereby certify that the information contained herein is true and complete to the best of my knowledge and belief.

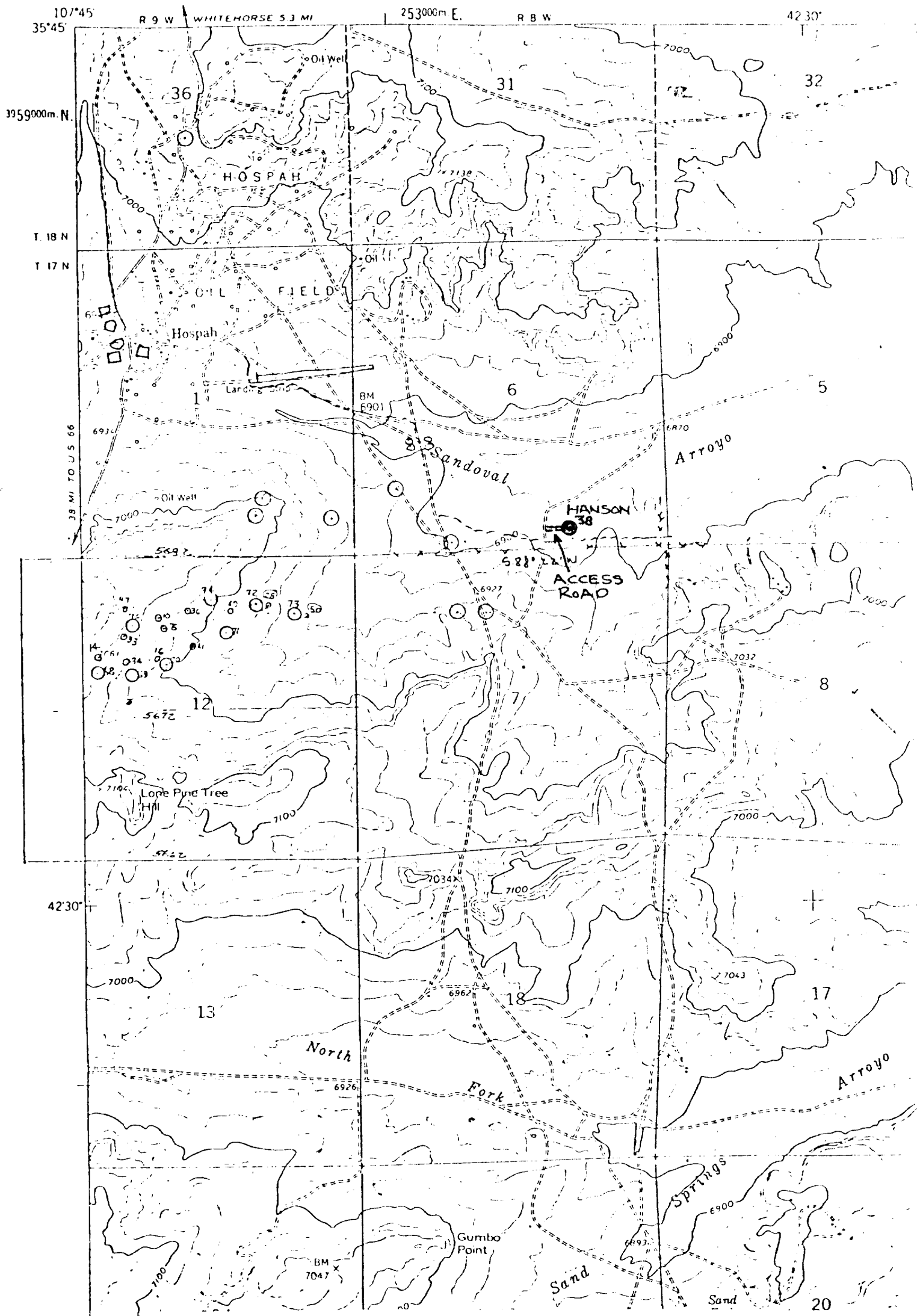
*Jim Stepinski*  
Name  
Jim Stepinski  
Position  
Production Engineer  
Company  
Tesoro Petroleum Corp.

Date  
7/27/81

I hereby certify that the well location shown on this plat was plotted from field notes of actual surveys made by me or under my supervision, and that the same is true and correct to the best of my knowledge and belief.

Date Surveyed  
July 22, 1981  
Registered Professional Engineer  
and Land Surveyor  
*Fred B. Zerk Jr.*  
Certificate No. **3950**  
NEW MEXICO  
FRED B. ZERK JR.

UNITED STATES  
DEPARTMENT OF THE INTERIOR  
GEOLOGICAL SURVEY



Vicinity Map for  
TESORO PETROLEUM CORP. #38 HANSON  
340' FSL 1655' FEL Sec. 6-T17N-R8W  
MCKINLEY COUNTY, NEW MEXICO