

UNITED STATES
DEPARTMENT OF THE INTERIOR
GEOLOGICAL SURVEY

APPLICATION FOR PERMIT TO DRILL, DEEPEN, OR PLUG BACK

1a. TYPE OF WORK

DRILL ☒DEEPEN ☐PLUG BACK ☐

b. TYPE OF WELL

OIL
WELL ☒GAS
WELL ☐

OTHER

SINGLE
ZONE ☐MULTIPLE
ZONE ☐

2. NAME OF OPERATOR

Wexpro Company

3. ADDRESS OF OPERATOR

P. O. Box 1129, Rock Springs, Wyoming 82901

4. LOCATION OF WELL (Report location clearly and in accordance with any State requirements)

At surface

NE NW 660' FNL, 1980' FWL

At proposed prod. zone

14. DISTANCE IN MILES AND DIRECTION FROM NEAREST TOWN OR POST OFFICE*

12 miles west of Tomeon Trading Post

15. DISTANCE FROM PROPOSED*

LOCATION TO NEAREST
PROPERTY OR LEASE LINE, FT.
(Also to nearest drlg. unit line, if any)

660'

18. DISTANCE FROM PROPOSED LOCATION*

TO NEAREST WELL, DRILLING, COMPLETED,
OR APPLIED FOR, ON THIS LEASE, FT.

N/A

16. NO. OF ACRES IN LEASE

640

19. PROPOSED DEPTH

3850

17. NO. OF ACRES ASSIGNED
TO THIS WELL

40

20. ROTARY OR CABLE TOOLS

Rotary

21. ELEVATIONS (Show whether DF, RT, GR, etc.)

GR 6811'

22. APPROX. DATE WORK WILL START*

February 28, 1982

23.

PROPOSED CASING AND CEMENTING PROGRAM

SIZE OF HOLE	SIZE OF CASING	WEIGHT PER FOOT	SETTING DEPTH	QUANTITY OF CEMENT
12	9-5/8	36	120	70 sacks with 3% calcium chloride
7-7/8	5-1/2	15.5	3850	circulate to surface

See attached 10-point plan.



IN ABOVE SPACE DESCRIBE PROPOSED PROGRAM: If proposal is to deepen or plug back, give data on present productive zone and proposed new productive zone. If proposal is to drill or deepen directionally, give pertinent data on subsurface locations and measured and true vertical depths. Give blowout preventer program, if any.

24.

SIGNED

*A. J. Maurer*TITLE Drilling SuperintendentDATE January 26, 1982

(This space for Federal or State office use)

PERMIT NO. _____

APPROVAL DATE _____

APPROVED BY _____

TITLE _____

CONDITIONS OF APPROVAL, IF ANY:

APPROVED
AS AMENDED
DATE FEB 19 1982 <i>James F. Sims</i> FOR JAMES F. SIMS DISTRICT ENGINEER

NMOCC

**NEW MEXICO OIL CONSERVATION COMMISSION
WELL LOCATION AND ACREAGE DEDICATION PLAT**

Form C-102
Supersedes C-128
Effective 1-1-65

All distances must be from the outer boundaries of the Section.

Operator WEXPRO COMPANY			Lease NM-14730		Well No. No. 1 Sage
Unit Letter C	Section 22	Township 18 NORTH	Range 6 WEST	County MCKINLEY COUNTY	
Actual Footage Location of Well: 660 feet from the NORTH line and 1980 feet from the WEST line					
Ground Level Elev. 6811	Producing Formation Dakota	Pool -WC		Dedicated Acreages 40 Acres	

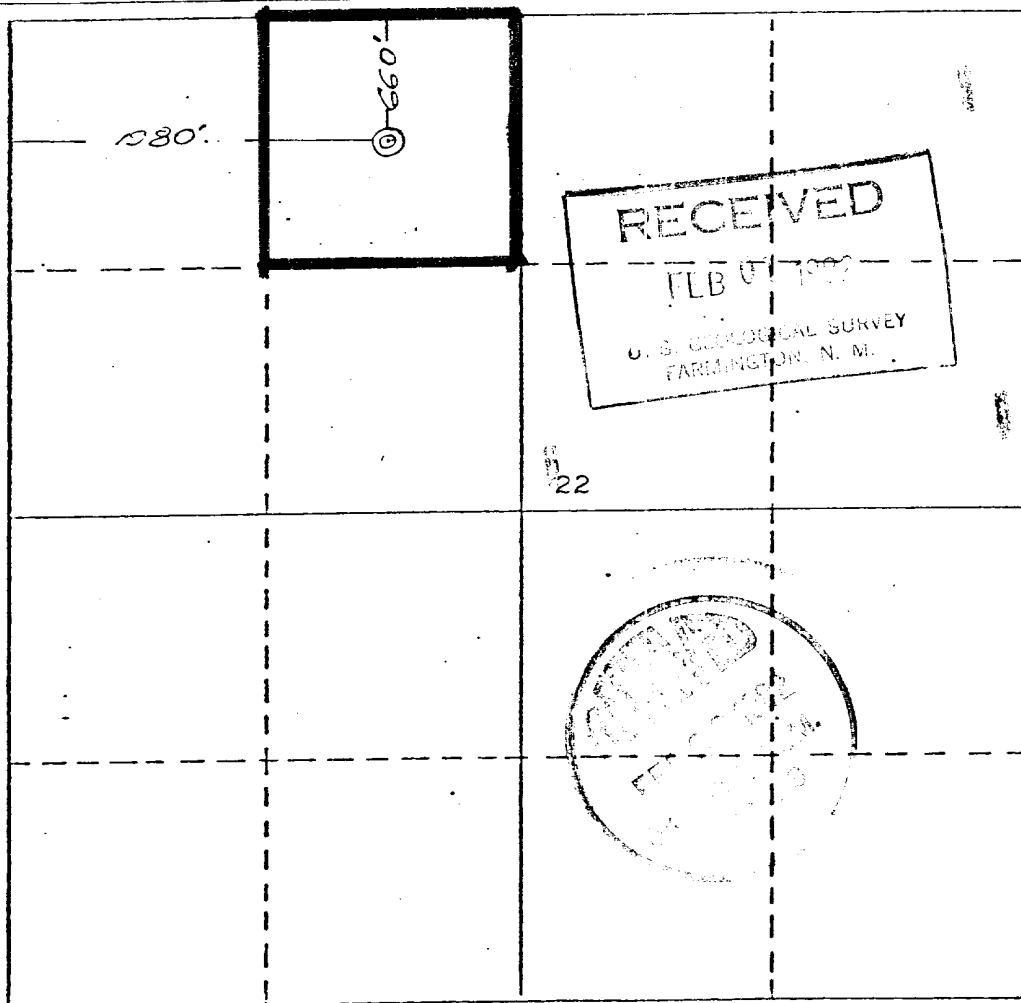
RECEIVED DEC 14 1981

1. Outline the acreage dedicated to the subject well by colored pencil or hatchure marks on the plat below.
2. If more than one lease is dedicated to the well, outline each and identify the ownership thereof (both as to working interest and royalty). **N/A**
3. If more than one lease of different ownership is dedicated to the well, have the interests of all owners been consolidated by communitization, unitization, force-pooling, etc? **N/A**

☐ Yes ☐ No If answer is "yes," type of consolidation _____

If answer is "no," list the owners and tract descriptions which have actually been consolidated. (Use reverse side of this form if necessary.) _____

No allowable will be assigned to the well until all interests have been consolidated (by communitization, unitization, forced-pooling, or otherwise) or until a non-standard unit, eliminating such interests, has been approved by the Commission.

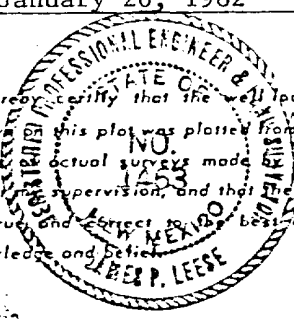


CERTIFICATION

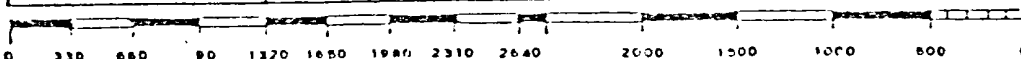
I hereby certify that the information contained herein is true and complete to the best of my knowledge and belief.

Name *A. J. Maser*
 Position **Drilling Superintendent**
 Company **Wexpro Company**
 Date **January 26, 1982**

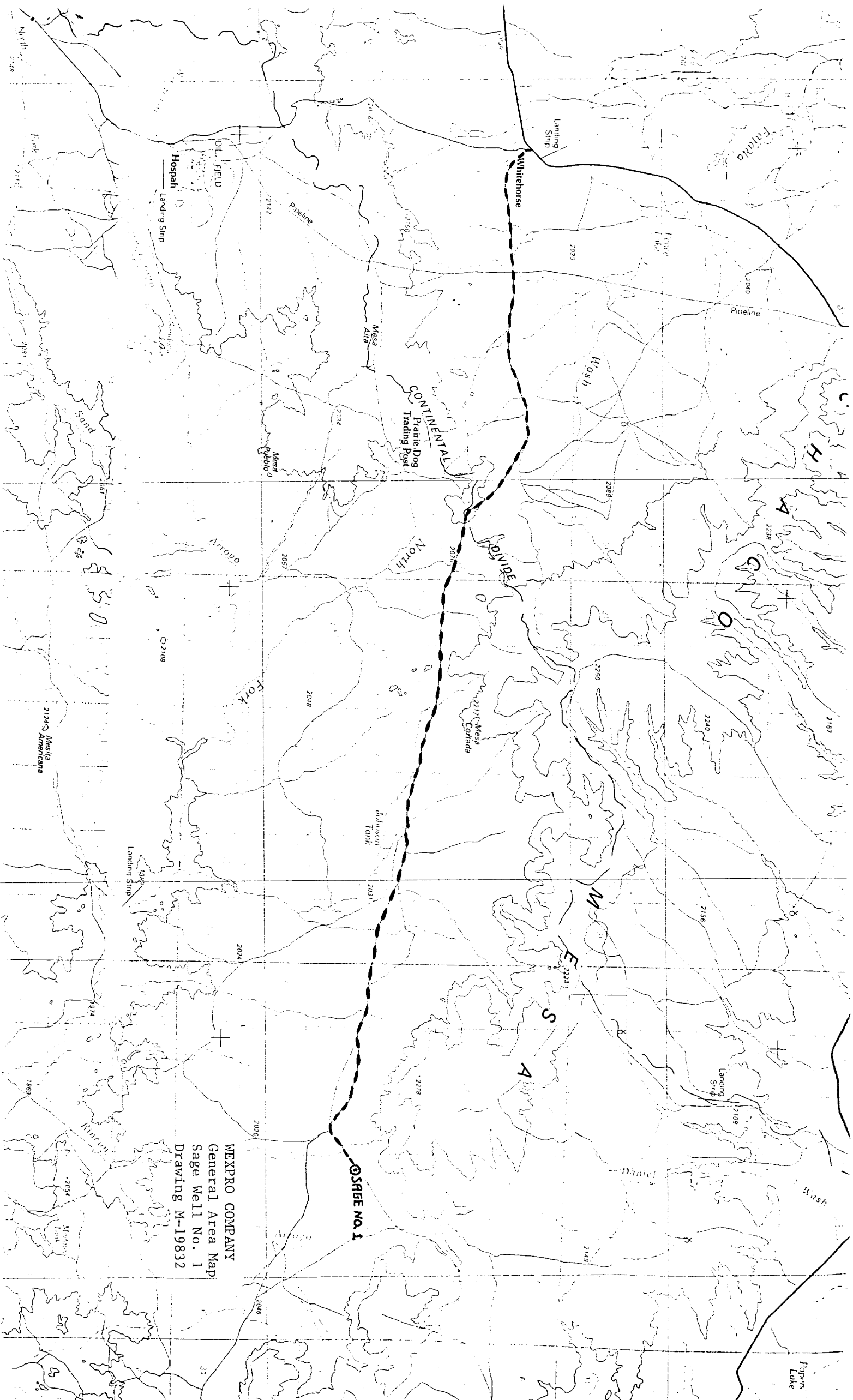
I hereby certify that the well location shown on this plat was plotted from field notes or actual surveys made by me or under my supervision, and that the same is, true and correct to the best of my knowledge and belief.



Date Surveyed **December 9, 1981**
 Registered Professional Engineer and/or Land Surveyor
James P. Lease
 Certificate No. **1463**



DRAWING M-19828



WEXPRO COMPANY
General Area Map
Sage Well No. 1
Drawing M-19832