

UNITED STATES
DEPARTMENT OF THE INTERIOR
GEOLOGICAL SURVEY

RECEIVED
SUBMIT TO THE STATE
(Other instructions on reverse side)

JUL 8 1982
OIL CON. COM.
PLUG BACK

Form approved.
Budget Bureau No. 42-R1425.

30-031-20801

APPLICATION FOR PERMIT TO DRILL, DEEPEN, OR PLUG BACK

1a. TYPE OF WORK

DRILL ☒

DEEPEN ☐

PLUG BACK ☐

b. TYPE OF WELL

OIL WELL ☒

GAS WELL ☐

OTHER ☐

SINGLE ZONE ☐

MULTIPLE ZONE ☐

2. NAME OF OPERATOR

Colorado Plateau Geological Services, Inc.

3. ADDRESS OF OPERATOR

P.O. Box 537 Farmington, New Mexico 87401

4. LOCATION OF WELL (Report location clearly and in accordance with any State requirements.)

At surface

2310' FNL, 1750' FEL, Sec. 26, T17N, R6W

At proposed prod. zone

same

14. DISTANCE IN MILES AND DIRECTION FROM NEAREST TOWN OR POST OFFICE

19 miles SW of Torreon Trading Post, New Mexico

15. DISTANCE FROM PROPOSED*

LOCATION TO NEAREST

PROPERTY OR LEASE LINE, FT.

(Also to nearest drlg. unit line, if any)

1750'

16. NO. OF ACRES IN LEASE

640

17. NO. OF ACRES ASSIGNED

TO THIS WELL

40

18. DISTANCE FROM PROPOSED LOCATION*

TO NEAREST WELL, DRILLING, COMPLETED,

OR APPLIED FOR, ON THIS LEASE, FT.

NA

19. PROPOSED DEPTH

2800'

20. ROTARY OR CABLE TOOLS

Rotary

21. ELEVATIONS (Show whether DF, RT, GR, etc.)

6435' GR

22. APPROX. DATE WORK WILL START*

April 15, 1982

23.

PROPOSED CASING AND CEMENTING PROGRAM

SIZE OF HOLE	SIZE OF CASING	WEIGHT PER FOOT	SETTING DEPTH	QUANTITY OF CEMENT
8 5/8"	7"	17# K-55	90'	circulate to surface
6 1/4"	4 1/2"	10.5# K-55	2800'	circulate to surface

We propose to drill a 6 1/4" hole to 2800' to test the Dakota Formation. In the event commercial oil or gas is encountered we will run logs and 4 1/2" casing below the zone of interest and fill with enough cement to circulate to surface. We will then attempt a completion. Pressure control equipment will include 90' of 7" 17.0# surface casing cemented to surface. We will use a double ram hydraulic BOP. BOP will be at least a shaffer LWP hydraulic with a 7 1/10" bore. BOP will be attached to the casing with a 7" flange and will be coupled with a hydraulic closing unit and will be ±23" from top of flange to the top of the BOP. The well will be drilled with water based gel mud from surface to TD. Expected tops are: Point Lookout 300', Gallup 1500', Dakota 2400', Morrison 2700'. No significant fresh zones are expected. Oil or gas may be expected in the Gallup or Dakota.

IN ABOVE SPACE DESCRIBE PROPOSED PROGRAM: If proposal is to deepen or plug back, give data on present productive zone and proposed new productive zone. If proposal is to drill or deepen directionally, give pertinent data on subsurface locations and measured and true vertical depths. Give blowout preventer program, if any.

24.

SIGNED

Sam G. Bell

TITLE

President

DATE

March 20, 1982

(This space for Federal or State office use)

PERMIT NO.

APPROVAL DATE

APPROVED BY

TITLE

CONDITIONS OF APPROVAL, IF ANY:

APPROVED
AS AMENDED

DATE

JUL 07 1982

JAMES F. SIMS
DISTRICT ENGINEER

*See Instructions On Reverse Side

NMOC

All distances must be from the outer boundaries of the Section.

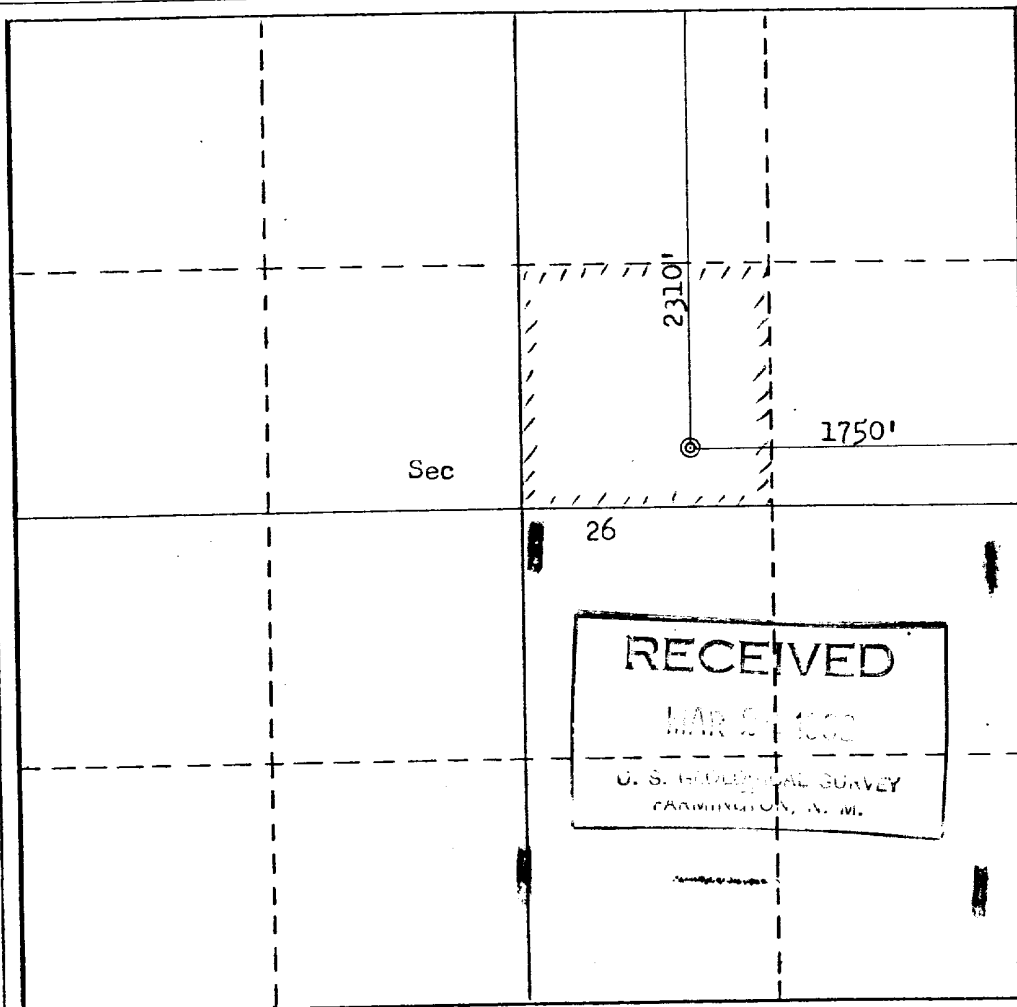
Operator Colorado Plateau Geological Services			Lease Chico Federal		Well No. 1
Unit Letter G	Section 26	Township 17N	Range 6W	County McKinley	
Actual Footage Location of Well:					
2310 feet from the North		line and	1750 feet from the East		line
Ground Level Elev. 6435	Producing Formation Dakota		Pool Wildcat		Dedicated Acreage: 40 Acres

1. Outline the acreage dedicated to the subject well by colored pencil or hachure marks on the plat below.
2. If more than one lease is dedicated to the well, outline each and identify the ownership thereof (both as to working interest and royalty).
3. If more than one lease of different ownership is dedicated to the well, have the interests of all owners been consolidated by communitization, unitization, force-pooling, etc?

☐ Yes ☐ No If answer is "yes," type of consolidation _____

If answer is "no," list the owners and tract descriptions which have actually been consolidated. (Use reverse side of this form if necessary.) _____

No allowable will be assigned to the well until all interests have been consolidated (by communitization, unitization, forced-pooling, or otherwise) or until a non-standard unit, eliminating such interests, has been approved by the Commission.



CERTIFICATION

I hereby certify that the information contained herein is true and complete to the best of my knowledge and belief.

Name: Bruce G. Stead
Position: PRESIDENT
Company: COLORADO PLATEAU GEO. SERVICES, INC.
Date: 3/20/82

I hereby certify that the well location shown on this plat was plotted from field notes of actual surveys made by me or under my supervision, and that the same is true and correct to the best of my knowledge and belief.

Date Surveyed: _____

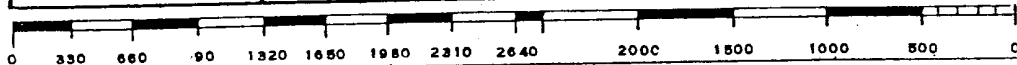
Registered Professional Engineer and/or Land Surveyor

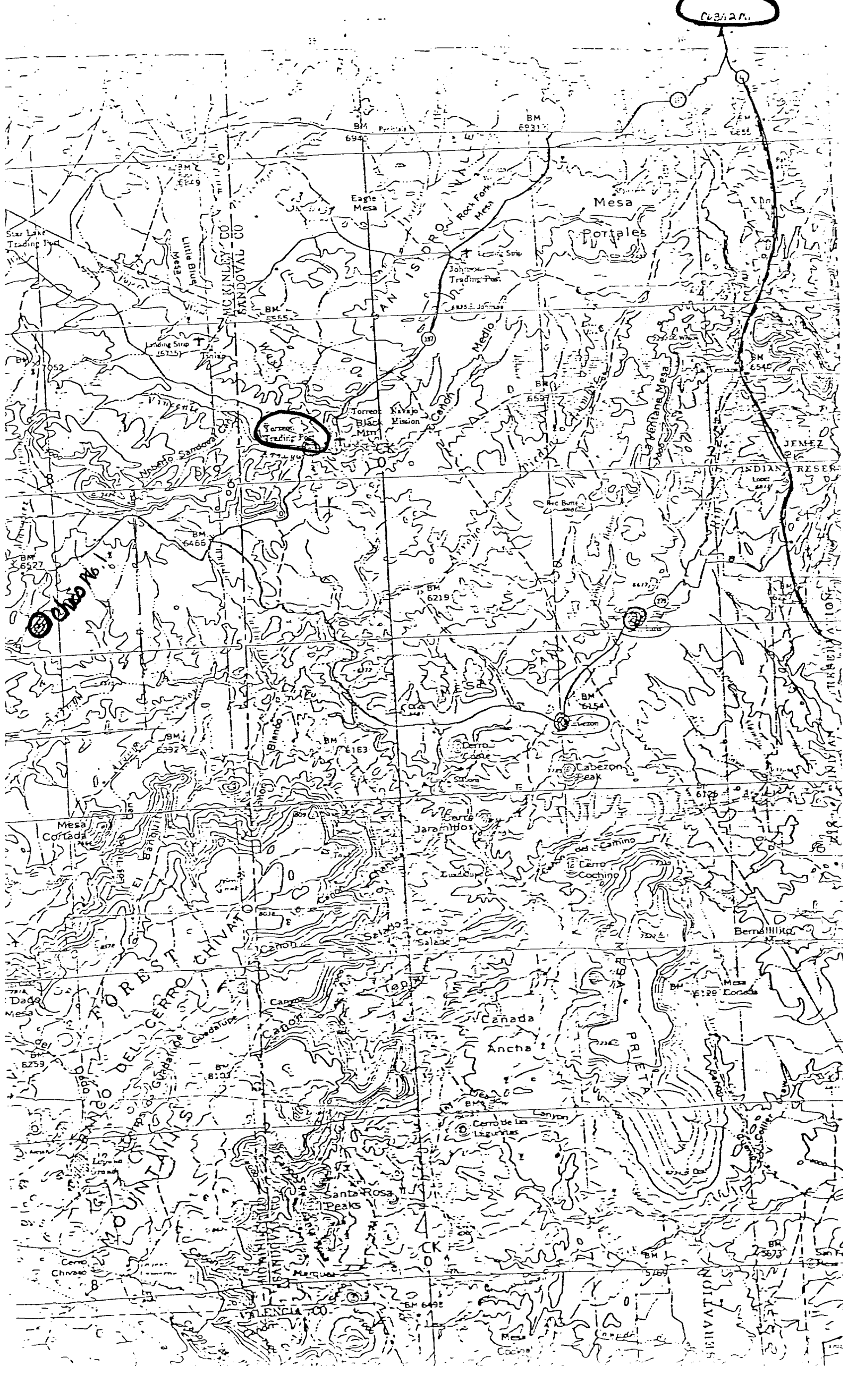
Fred B. Kerr Jr.

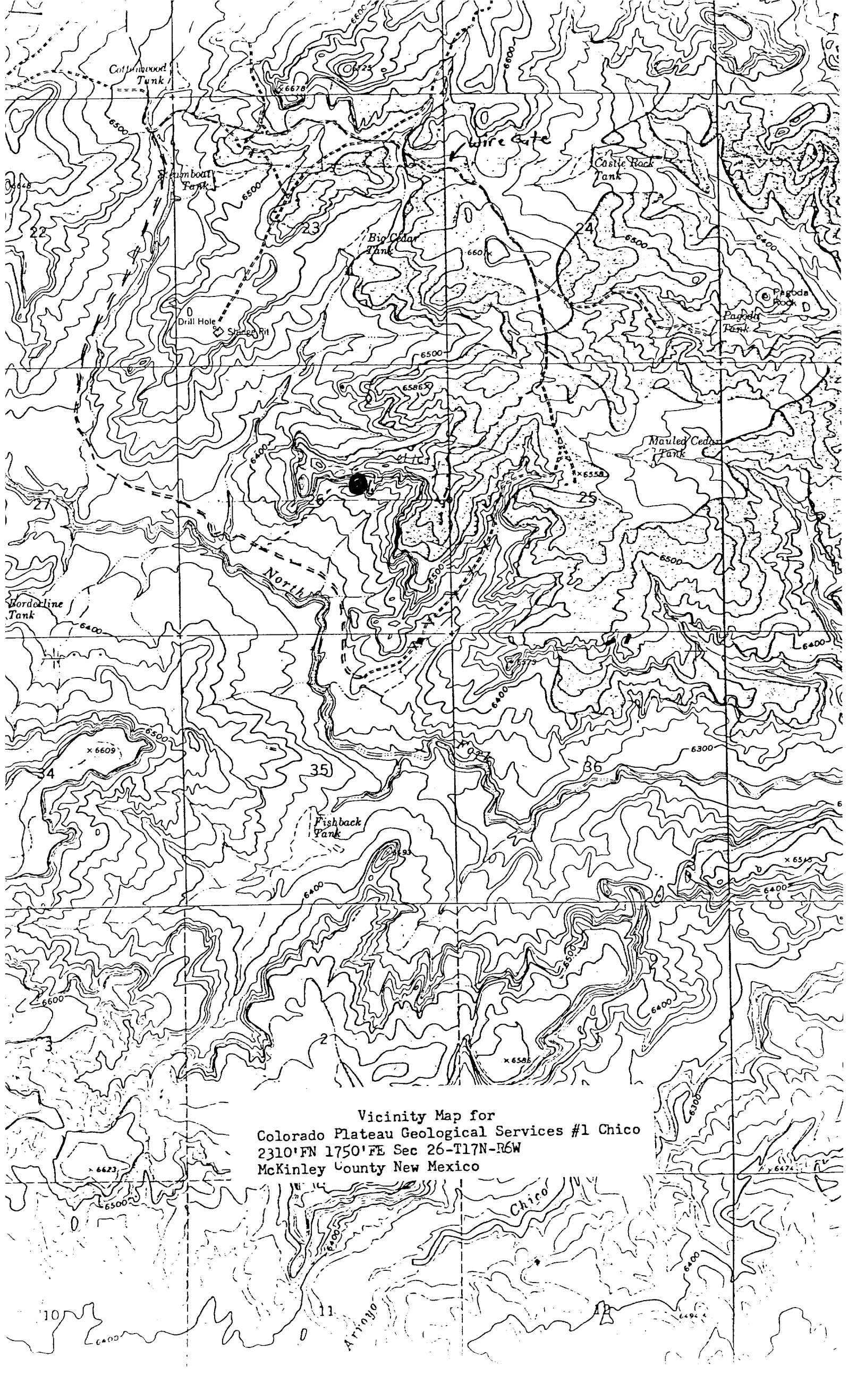
Certificate No.:

3950

F. B. KERR, JR.







Vicinity Map for
Colorado Plateau Geological Services #1 Chico
2310'FN 1750'FE Sec 26-T17N-R6W
McKinley County New Mexico