

NO. OF COPIES RECEIVED	
DISTRIBUTION	
SANTA FE	
FILE	
U.S.G.S.	
LAND OFFICE	
OPERATOR	

30-031-20824

APPLICATION FOR PERMIT TO DRILL, DEEPEN, OR PLUG BACK

Type of Work

DRILL ☒DEEPEN ☐PLUG BACK ☐

Type of Well

OIL ☒GAS ☐OTHER ☐SINGLE ☐MULTIPLE ☐

Name of Operator

CAPITAL OIL & GAS CORPORATION

Address of Operator

P. O. DRAWER M MILAN, NEW MEXICO 87021

Location of Well

UNIT LETTER K LOCATED 2310' FEET FROM THE South LINE1650' FEET FROM THE West LINE OF SEC. 16 TWP. 16N R. 6W N.M.P.M.

5A. Indicate Type of Lease

STATE ☒ FREE ☐

5. State Oil & Gas Lease No.

L-6469

7. Unit Agreement Name

Miguel Creek - Gallup

8. Form of Lease Name

STATE

9. Well No.

State Lease #10

10. Field and Pool, or Wildcat

WILDCAT Under Gallup

12. County

McKinley

15. Proposed Depth

1300'

19A. Formation

Hospah-Gallup

20. Rotary or C.T.

Rotary

21. Elevations (Show whether D.P., H.L., etc.)

6504.24'

21A. Kind & Status Plug Used

\$50,000

21B. Drilling Contractor

Alamo Drilling, Inc.

22. Approx. Date Work will start

10-22-82

PROPOSED CASING AND CEMENT PROGRAM

SIZE OF HOLE	SIZE OF CASING	WEIGHT PER FOOT	SETTING DEPTH	SACKS OF CEMENT	EST. TOP
12 1/4	8 5/8	24	90 ft.	85	Surface
7 7/8	5 1/2	15-50	TD	175	400

1. Drill 12 1/4 hole. Set 2 joints 8 5/8. Cement surface.
2. Drill to top of Hospah.
3. Core log. Drill 70' rat hole
4. If commercially productive, set 4 1/2 casing to total depth and cement with 175 sacks of cement.

APPROVAL VALID
FOR 90 DAYS UNLESS
DRILLING COMMENCED,

EXPIRES

5-8-83

IN ABOVE SPACE DESCRIBE PROPOSED PROGRAM IF PROPOSAL IS TO DEEPEN OR PLUG BACK, GIVE DATA ON PRESENT PRODUCTIVE ZONE AND PROPOSED NEW PRODUCTION ZONE. GIVE SLOUGH PREVENTION PROGRAM, IF ANY.

I hereby certify that the information above is true and complete to the best of my knowledge and belief.

Signed

Title Representative

Date 10/22/82

(This space for State Use)

APPROVED BY

TITLE

SUPERVISOR DISTRICT # 3

DATE

NOV 8 1982

CONDITIONS OF APPROVAL, IF ANY:

Joint with well #9

OIL CONSERVATION DIVISION

P. O. BOX 2088

SANTA FE, NEW MEXICO 87501

Form C-102
Revised 10-1-78*Mason Marm*

All distances must be from the outer boundaries of the Section.

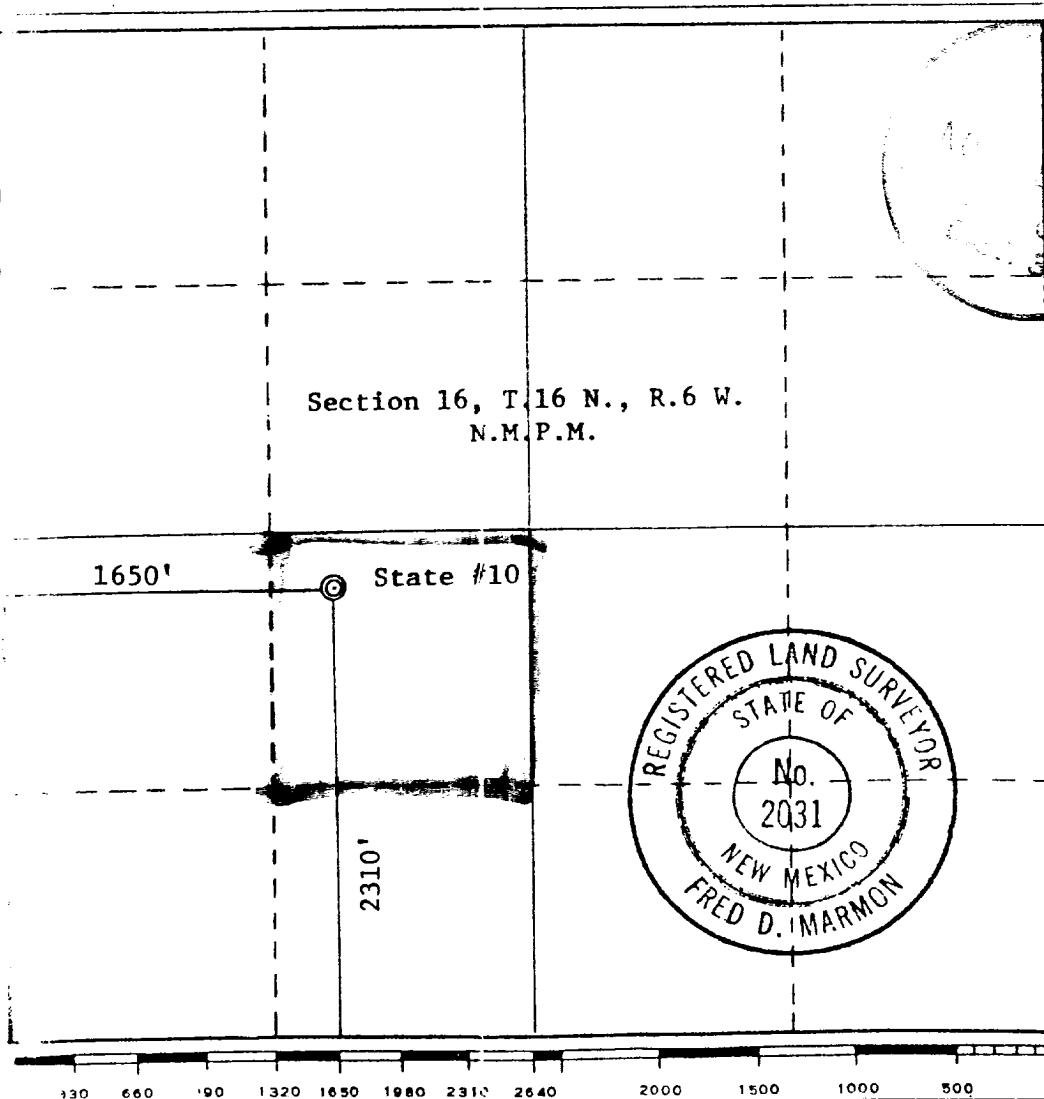
Operator CAPITAL OIL & GAS			Lease STATE LEASE L-6469			Well No. State #10		
Letter K	Section 16	Township 16N.	Range 6W.	County McKinley				
Actual Footage Location of Well: 2310' feet from the South line and 1650' feet from the West line								
Ground Level Elev. 6504.24'	Producing Formation Hospah-Gallup			Foot Cinder			Dedicated Acreage: 40 Joint with well #9 Acres	

- Outline the acreage dedicated to the subject well by colored pencil or hatchure marks on the plat below.
- If more than one lease is dedicated to the well, outline each and identify the ownership thereof (both as to working interest and royalty).
- If more than one lease of different ownership is dedicated to the well, have the interests of all owners been consolidated by communitization, unitization, force-pooling, etc?

☐ Yes ☒ No If answer is "yes," type of consolidation _____

If answer is "no," list the owners and tract descriptions which have actually been consolidated. (Use reverse side of this form if necessary.) Golden Exploration owns 100%

No allowable will be assigned to the well until all interests have been consolidated (by communitization, unitization, forced-pooling, or otherwise) or until a non-standard unit, eliminating such interests, has been approved by the Commission.



CERTIFICATION

I hereby certify that the information contained herein is true and complete to the best of my knowledge and belief.

[Signature]
Representative

Position
Capital Oil & Gas

Company
October 22, 1982

Date

I hereby certify that the well location shown on this plat was plotted from field notes of actual surveys made by me or under my supervision, and that the same is true and correct to the best of my knowledge and belief.

Date Surveyed
March 19, 1982

Registered Professional Engineer
and/or Land Surveyor

[Signature]
Certificate No.

2031

