

OPERATOR WOOSLEY OIL CO		PROPERTY NAME SANTE FE ENERGY		WELL NO. 2
DATE 8-9-95	LOCATION ULSTR) A-17-19N-06W		FOOTAGE 330 FNL & 330 FEL	
API NO. 30-031-20845		POOL STAR MESAVERDE		
Tops		<p>Diagram showing well casing and hole sections with handwritten measurements:</p> <ul style="list-style-type: none"> 65' (next to casing section) 4 1/2" (next to hole section) 		
LEWIS				
CLIFFHOUSE				
MENEFEE				
POINT LOOKOUT				
MANCOS				
CASING RECORD: 7 INCH 65 FT. CIRCULATED 4 1/2 INCH 9.5 # 2250 FT. ??? 6 1/4 INCH HOLE 200 SXS. <i>NO RECORD OF 6 1/4 INCH HOLE</i>				

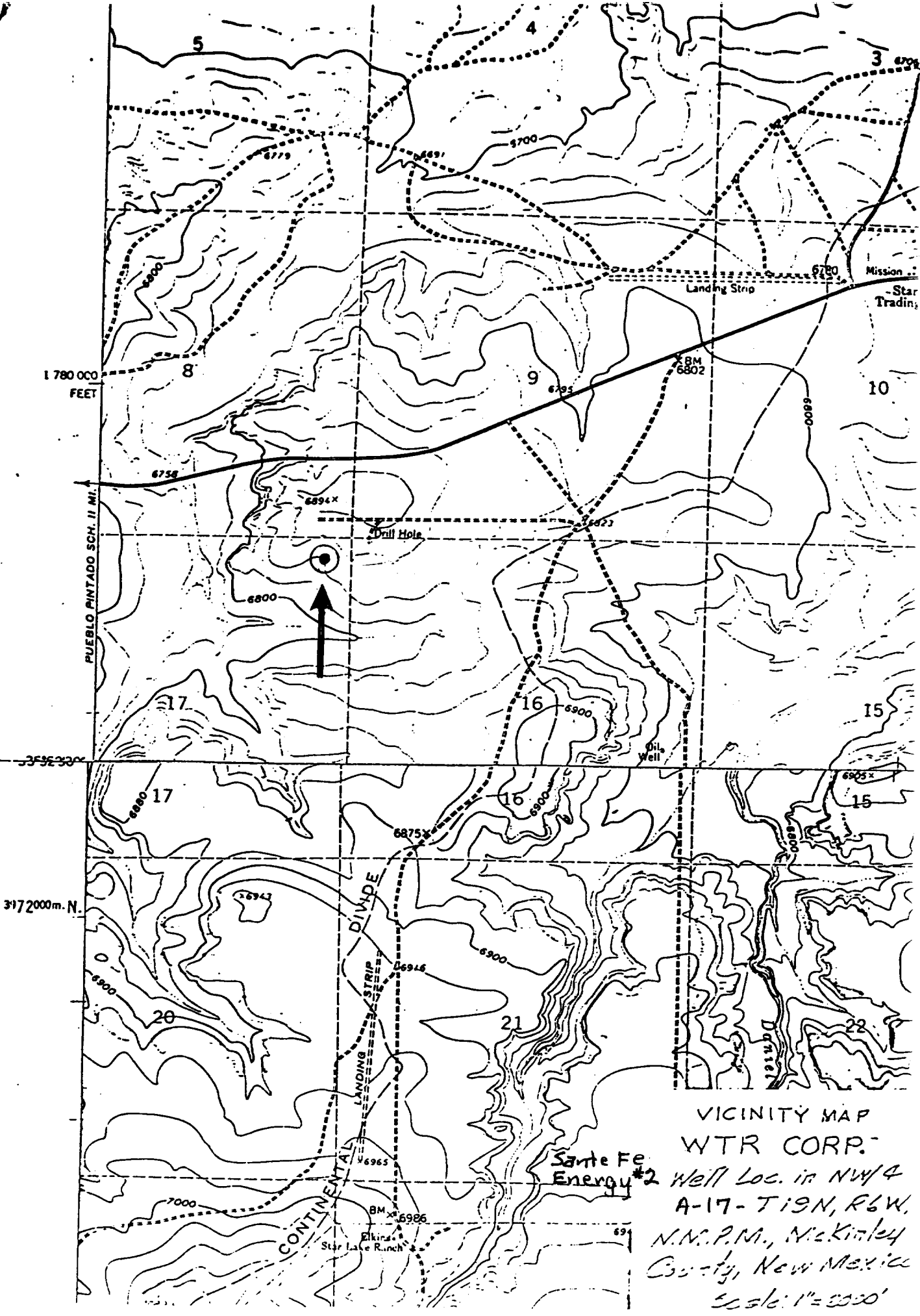
PLUGGING PROCEDURE

Woosley Oil Co.
Sante Fe Energy #2
A-17-19N-06W
30-031- 20845

Presumed downhole conditions and equipment
See attached schematic

Pull all production equipment and nipple up BOP

1. Go in hole with tbg. and set a plug from 1815 ft. to 1665 ft. WOC & tag cement.
2. Load hole with 8.4 lb. 40 visc. Mud and test casing.
3. Pull tbg. & GIH with wireline & perf. two holes at 642 Ft.
4. Establish rate through perfs. If casing test was O.K. go to step 5 if not run a retainer & pump cement through retainer.
5. Bullhead cement down 4 ½ csg. Pump sufficient cement to cover 100 ft. Plus 100 % excess outside of pipe & leave cement inside pipe to 492 ft. WOC & tag cement at 492 ft.
6. GIH with wireline to 110 ft. & perf. two holes. Bullhead cement down 4 ½ csg. & circulate out the BH.
7. Top off csg. with cement and set a dry hole marker.
8. Restore location .



VICINITY MAP
 WTR CORP.
 Sante Fe Energy #2 Well Loc. in NW/4
 A-17-T19N, R6W,
 N.M.P.M., McKinley
 County, New Mexico
 Scale: 1"=5000'



Woosley SF Energy #2
A-17-19N-06W