

UNITED STATES
DEPARTMENT OF THE INTERIOR
BUREAU OF LAND MANAGEMENT

APPLICATION FOR PERMIT TO DRILL, DEEPEN, OR PLUG BACK

1a. TYPE OF WORK

DRILL ☒

DEEPEN ☐

PLUG BACK ☐

b. TYPE OF WELL

OIL
WELL ☒

GAS
WELL ☐

OTHER

SINGLE
ZONE ☐

MULTIPLE
ZONE ☐

2. NAME OF OPERATOR

Champlin Petroleum Company

3. ADDRESS OF OPERATOR

P. O. Box 1257, Englewood, CO 80150

4. LOCATION OF WELL (Report location clearly and in accordance with any State requirements.)*

At surface

NWSW (990' FWL & 1650' FSL)

At proposed prod. zone

BUREAU OF LAND MANAGEMENT
FARMINGTON RESOURCE AREA

14. DISTANCE IN MILES AND DIRECTION FROM NEAREST TOWN OR POST OFFICE*

2.7 miles East, 1/3 mile SE and 1/2 mile SW

15. DISTANCE FROM PROPOSED*

LOCATION TO NEAREST
PROPERTY OR LEASE LINE, FT.
(Also to nearest drig. unit line, if any)

990'

16. NO. OF ACRES IN LEASE

2039

17. NO. OF ACRES ASSIGNED
TO THIS WELL

40/40

18. DISTANCE FROM PROPOSED LOCATION*

TO NEAREST WELL, DRILLING, COMPLETED,
OR APPLIED FOR, ON THIS LEASE, FT.

Approx. 2340'

19. PROPOSED DEPTH

3350'

20. ROTARY OR CABLE TOOLS

Rotary 0-TD

21. ELEVATIONS (Show whether DF, RT, GR, etc.)

6817' GL, 6828' KB

SUBJECT TO COMPLIANCE WITH ATTACHED
"GENERAL REQUIREMENTS".

22. APPROX. DATE WORK WILL START*

Upon approval

23.

PROPOSED CASING AND CEMENTING PROGRAM

This action is subject to administrative

appeal pursuant to 30 CFR 290.

SIZE OF HOLE	SIZE OF CASING	WEIGHT PER FOOT	SETTING DEPTH	QUANTITY OF CEMENT
12 1/4"	9-5/8"	36#	400'	324 CF Cl B, 1/4# Flocele, 2% CaCl ₂
7-7/8"	5-1/2"	15.5#	3350'	Volume to be determined from Caliper Log.

Drill 12 1/4" hole to 400'. Set 9-5/8" casing and cement to surface. WOC 12 hours, test surface casing and BOP before drilling out. BOP to be operated each day after drilling out. Drill 7-7/8" hole to approximately 3350'. If productive, run 5 1/2" casing and cement to 500' above uppermost productive zones. All shows of oil/gas will be tested.

RECEIVED

APR 25 1985

OIL CON. DIV.
DIST. 3

IN ABOVE SPACE DESCRIBE PROPOSED PROGRAM: If proposal is to deepen or plug back, give data on present productive zone and proposed new productive zone. If proposal is to drill or deepen directionally, give pertinent data on subsurface locations and measured and true vertical depths. Give blowout preventer program, if any.

24.

SIGNED

Ramona J. Rhoden

TITLE Sr. Engineering Aide

DATE 3-25-85

(This space for Federal or State office use)

PERMIT NO.

APPROVAL DATE

APPROVED BY

TITLE

CONDITIONS OF APPROVAL, IF ANY:

ok

NMOCC

*See Instructions On Reverse Side

Title 18 U.S.C. Section 1001, makes it a crime for any person knowingly and willfully to make to any department or agency of the United States any false, fictitious or fraudulent statements or representations as to any matter within its jurisdiction.

5. LEASE DESIGNATION AND SERIAL NO.
NM-24970

6. IF INDIAN, ALLOTTEE OR TRIBE NAME

7. UNIT AGREEMENT NAME

8. FARM OR LEASE NAME
Federal 13-9

9. WELL NO.
2

10. FIELD AND POOL, OR WILDCAT
W.C. Mares-Gallup, W.C. Dakota

11. SEC., T., R., M., OR BLK.
AND SURVEY OR AREA
Section 9-T18N-R8W

12. COUNTY OR PARISH
McKinley

13. STATE
NM

14. DISTANCE IN MILES AND DIRECTION FROM NEAREST TOWN OR POST OFFICE* From Whitehorse,

15. DISTANCE FROM PROPOSED* LOCATION TO NEAREST PROPERTY OR LEASE LINE, FT. (Also to nearest drig. unit line, if any) 990'

16. NO. OF ACRES IN LEASE 2039

17. NO. OF ACRES ASSIGNED TO THIS WELL 40/40

18. DISTANCE FROM PROPOSED LOCATION* TO NEAREST WELL, DRILLING, COMPLETED, OR APPLIED FOR, ON THIS LEASE, FT. Approx. 2340'

19. PROPOSED DEPTH 3350'

20. ROTARY OR CABLE TOOLS Rotary 0-TD

21. ELEVATIONS (Show whether DF, RT, GR, etc.) 6817' GL, 6828' KB

22. APPROX. DATE WORK WILL START* Upon approval

23. PROPOSED CASING AND CEMENTING PROGRAM This action is subject to administrative appeal pursuant to 30 CFR 290.

SIZE OF HOLE	SIZE OF CASING	WEIGHT PER FOOT	SETTING DEPTH	QUANTITY OF CEMENT
12 1/4"	9-5/8"	36#	400'	324 CF Cl B, 1/4# Flocele, 2% CaCl ₂
7-7/8"	5-1/2"	15.5#	3350'	Volume to be determined from Caliper Log.

24. IN ABOVE SPACE DESCRIBE PROPOSED PROGRAM: If proposal is to deepen or plug back, give data on present productive zone and proposed new productive zone. If proposal is to drill or deepen directionally, give pertinent data on subsurface locations and measured and true vertical depths. Give blowout preventer program, if any.

RECEIVED

APR 25 1985

OIL CON. DIV.
DIST. 3

IN ABOVE SPACE DESCRIBE PROPOSED PROGRAM: If proposal is to deepen or plug back, give data on present productive zone and proposed new productive zone. If proposal is to drill or deepen directionally, give pertinent data on subsurface locations and measured and true vertical depths. Give blowout preventer program, if any.

24. SIGNED Ramona J. Rhoden TITLE Sr. Engineering Aide DATE 3-25-85

(This space for Federal or State office use)

PERMIT NO. APPROVAL DATE

APPROVED BY TITLE

CONDITIONS OF APPROVAL, IF ANY:

ok

NMOCC

*See Instructions On Reverse Side

Title 18 U.S.C. Section 1001, makes it a crime for any person knowingly and willfully to make to any department or agency of the United States any false, fictitious or fraudulent statements or representations as to any matter within its jurisdiction.

APR 24 1985

/s/ J. Stan McKee

For M. MILLENBACH
AREA MANAGER

STATE OF NEW MEXICO
OIL AND MINERALS DEPARTMENT

OIL CONSERVATION DIVISION

P. O. BOX 2088

SANTA FE, NEW MEXICO 87501

Form C-107
Revised 10-1

All distances must be from the outer boundaries of the Section.

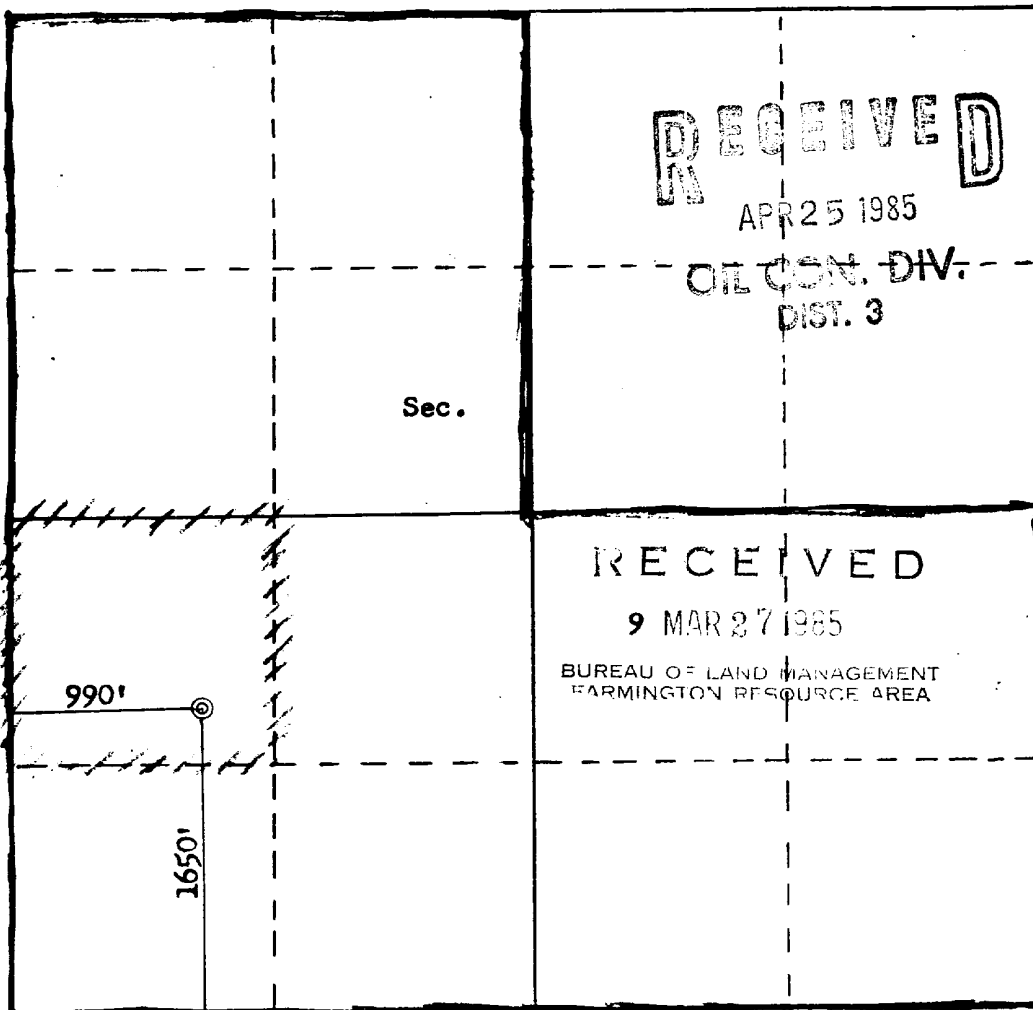
Operator CHAMPLIN PETROLEUM COMPANY			Lease FEDERAL 13-9 NM-24970		Well No. 2
Unit Letter L	Section 9	Township 18N	Range 8W	County McKinley	
Actual Footage Location of Well: 1650 feet from the South line and 990 feet from the West line					
Ground Level Elev. 6817	Producing Formation Gallup/Dakota		Pool Wildcat / WC		Dedicated Acreage: 40/40 Acres

1. Outline the acreage dedicated to the subject well by colored pencil or hatchure marks on the plat below.
2. If more than one lease is dedicated to the well, outline each and identify the ownership thereof (both as to working interest and royalty). One Lease
3. If more than one lease of different ownership is dedicated to the well, have the interests of all owners been consolidated by communitization, unitization, force-pooling, etc?

☐ Yes ☐ No If answer is "yes," type of consolidation _____

If answer is "no," list the owners and tract descriptions which have actually been consolidated. (Use reverse side of this form if necessary.) One Lease

No allowable will be assigned to the well until all interests have been consolidated (by communitization, unitization, forced-pooling, or otherwise) or until a non-standard unit, eliminating such interests, has been approved by the Commission.



Scale: 1"=1000'

CERTIFICATION

I hereby certify that the information contained herein is true and complete to the best of my knowledge and belief.

Ramona J. Rhoden
Name

Ramona J. Rhoden
Position

Sr. Engineering Aide
Company

Champlin Petroleum Company
Date

March 19, 1985

I hereby certify that the well location shown on this plat was plotted from field notes of actual surveys made by me or under my supervision, and that the same is true and correct to the best of my knowledge and belief.

Date Surveyed

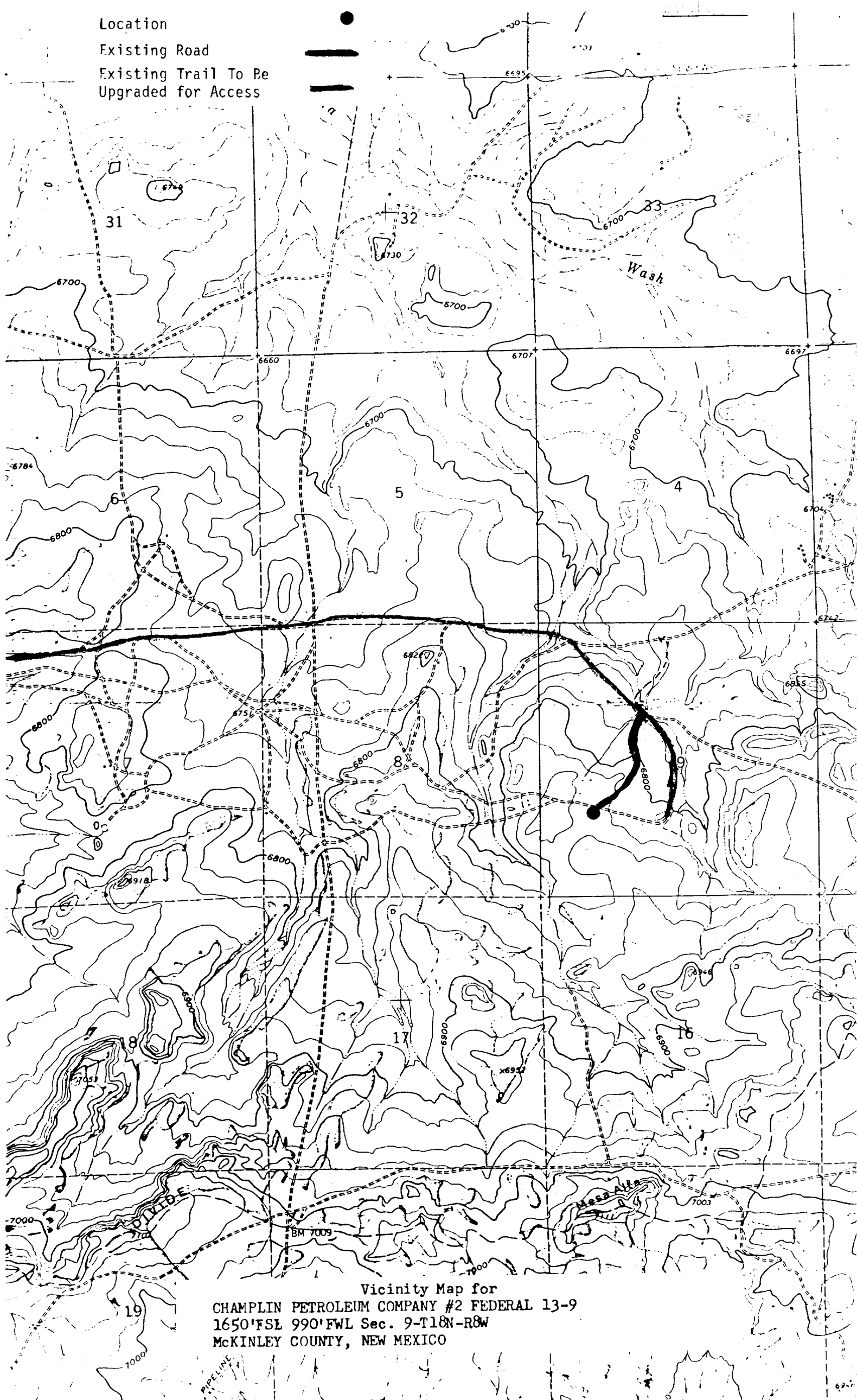
March 19, 1985
Registered Professional Engineer
and Land Surveyor
FRED B. KERR, JR.

Fred B. Kerr, Jr.
Certificate No. 3950
KERR, JR.

Location

Existing Road

Existing Trail To Be
Upgraded for Access



Vicinity Map for
CHAMPLIN PETROLEUM COMPANY #2 FEDERAL 13-9
1650' FSL 990' FWL Sec. 9-T18N-R8W
McKINLEY COUNTY, NEW MEXICO