

STATE OF NEW MEXICO  
ENERGY AND MINERALS DEPARTMENT

OIL CONSERVATION DIVISION

30-031-20883

Form C-101  
Revised 10-1-78

NO. OF COPIES RECEIVED	
DISTRIBUTION	
SANTA FE	
FILE	
U.S.G.S.	
LAND OFFICE	
OPERATOR	

P. O. BOX 2088

SANTA FE, NEW MEXICO 87501

5A. Indicate Type of Lease	
STATE <input checked="" type="checkbox"/>	FEE <input type="checkbox"/>
5. State Oil & Gas Lease No.	
LG 7435	

APPLICATION FOR PERMIT TO DRILL, DEEPEN, OR PLUG BACK

1a. Type of Work		7. Unit Agreement Name	
b. Type of Well DRILL <input checked="" type="checkbox"/> DEEPEN <input type="checkbox"/> PLUG BACK <input type="checkbox"/>		8. Farm or Lease Name Arena Blanca	
c. OIL WELL <input checked="" type="checkbox"/> GAS WELL <input type="checkbox"/> OTHER <input type="checkbox"/> SINGLE ZONE <input checked="" type="checkbox"/> MULTIPLE ZONE <input type="checkbox"/>		9. Well No. 1	
2. Name of Operator Merriam Oil & Gas Corporation		10. Field and Pool, or Wildcat WC Entrada	
3. Address of Operator P. O. Box 1017, Farmington, New Mexico 87499			
4. Location of Well UNIT LETTER <u>I</u> LOCATED <u>2360</u> FEET FROM THE <u>South</u> LINE AND <u>1200</u> FEET FROM THE <u>East</u> LINE OF SEC. 36 TWP. 20N RGE. 5W NMPM		12. County McKinley	
19. Proposed Depth 5620		19A. Formation Entrada	
20. Rotary or C.T. Rotary			
21. Elevations (Show whether DF, RT, etc.) 6634' GL		21A. Kind & Status Plug. Bond Nationwide	
21B. Drilling Contractor		22. Approx. Date Work will start Summer/1985	

23.

PROPOSED CASING AND CEMENT PROGRAM

SIZE OF HOLE	SIZE OF CASING	WEIGHT PER FOOT	SETTING DEPTH	SACKS OF CEMENT	EST. TOP
12-1/4"	9-5/8", J-55	32 #/ft.	200 ft.	75 sx	surface
8-3/4"	7", J-55	23 #/ft.	5620 ft.	as below (970 cu. ft.)	

Will drill 12-1/4" hole to 200 ft. and set 200 ft. of 9-5/8", 32 #/ft. J-55 casing with 75 sx Class B 2% CaCl<sub>2</sub>. Will pressure test to 600 PSI for 30 minutes. Drill 8-3/4" hole to 5520' KB. Will run drillstem test of Entrada Interval. If Entrada appears productive, will drill to 5620' KB. Will run open hole logs. Will run 7", 23 #/ft. J-55 casing to 5620' and cement in two stages. First stage will pump 150 sx Class H 2% gel to cover from TD to top (183 of Morrison @ 4630'). Will set stage tool @ 4600' est. and cement with 350 sx Class B 2% (cu ft D-79 (726 cu. ft.) followed by 50 sx Class H (61 cu. ft.). Top of cement estimated at surface. Will perforate and stimulate as deemed necessary. Drilling mud will be low solids, non-dispersed, low water loss mud using Bentonite, starch, CMC, and fresh water. Minimum specifications for pressure control is 10" 900 series double ram blowout preventer.

APPROVAL EXPIRES 10-25-85  
UNLESS DRILLING IS COMMENCED.  
SPUD NOTICE MUST BE SUBMITTED  
WITHIN 10 DAYS.

RECEIVED

APR 25 1985

OIL CON. DIV.  
DIST. 2

IN ABOVE SPACE DESCRIBE PROPOSED PROGRAM: IF PROPOSAL IS TO DEEPEN OR PLUG BACK, GIVE DATA ON PRESENT PRODUCTIVE ZONE AND PROPOSED NEW PRODUCTIVE ZONE. GIVE BLOWOUT PREVENTER PROGRAM, IF ANY.

I hereby certify that the information above is true and complete to the best of my knowledge and belief.

Signed [Signature] Title Operations Manager Date 1/24/85

(This space for State Use)

APPROVED BY [Signature] TITLE SUPERVISOR DISTRICT #3 DATE APR 25 1985

CONDITIONS OF APPROVAL, IF ANY:

## ESTIMATED TOPS

Fruitland	Surface
Pictured Cliffs	235
Cliffhouse	480
Menefee	1440
Point Lookout	2340
Mancos	2460
Gallup A	3235
Ballup B	3315
Massive Gallup	3495
Sanostee	3950
Greenhorn	4285
Delota	4500
Morrison	4630
Todilto	5505
Entrada	5517
TD	5620

**NEW MEXICO OIL CONSERVATION COMMISSION  
WELL LOCATION AND ACREAGE DEDICATION PLAT**

Form C-102  
Supersedes C-128  
Effective 1-1-65

All distances must be from the outer boundaries of the Section.

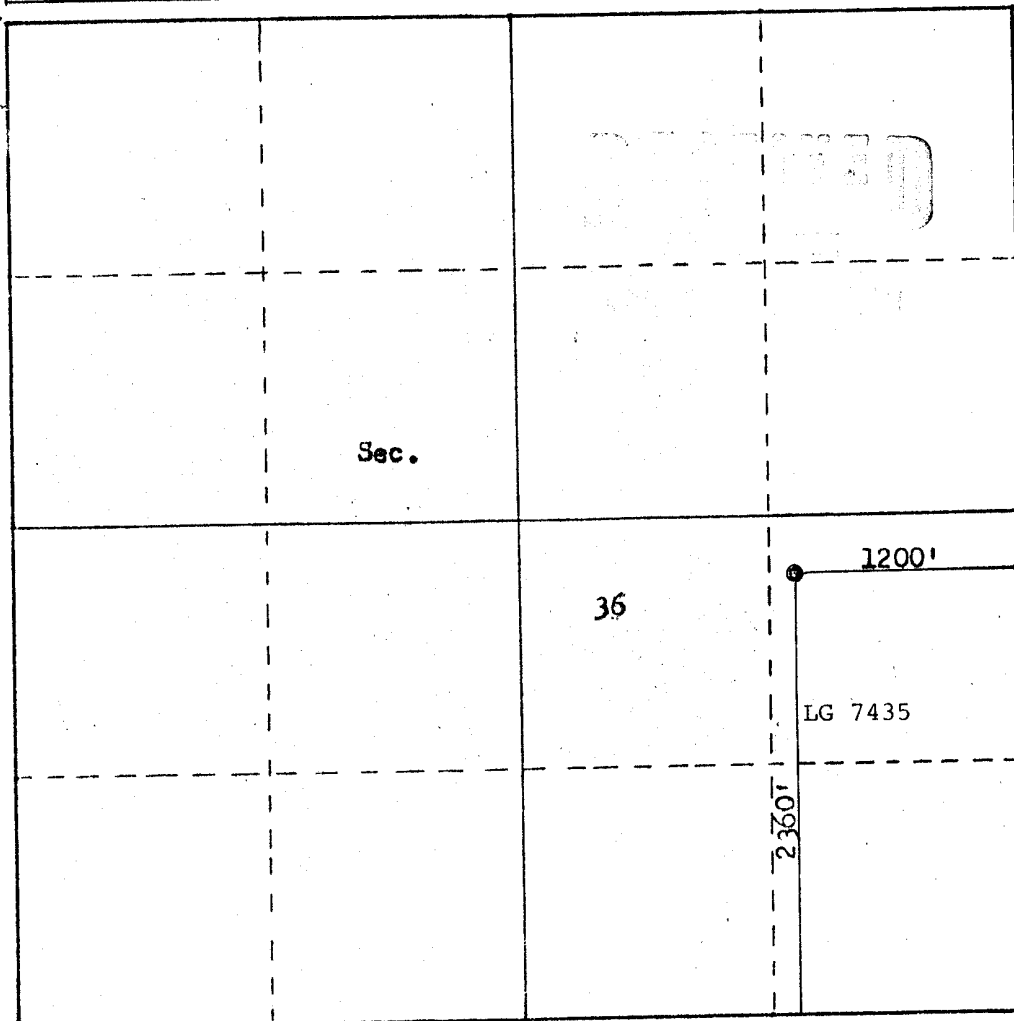
Operator <b>MERRION OIL &amp; GAS CORPORATION</b>			Lease <b>Arena Blanca</b>		Well No. <b>1</b>
Unit Letter <b>I</b>	Section <b>36</b>	Township <b>20N</b>	Range <b>5W</b>	County <b>McKinley</b>	
Actual Footage Location of Well: <b>2360</b> feet from the <b>South</b> line and <b>1200</b> feet from the <b>East</b> line					
Ground Level Elev. <b>6634</b>	Producing Formation <b>Entrada</b>	Pool <b>WC Entrada</b>		Dedicated Acreage <b>40</b> Acres	

1. Outline the acreage dedicated to the subject well by colored pencil or hachure marks on the plat below.
2. If more than one lease is dedicated to the well, outline each and identify the ownership thereof (both as to working interest and royalty).
3. If more than one lease of different ownership is dedicated to the well, have the interests of all owners been consolidated by communitization, unitization, force-pooling, etc?

☐ Yes ☐ No If answer is "yes," type of consolidation \_\_\_\_\_

If answer is "no," list the owners and tract descriptions which have actually been consolidated. (Use reverse side of this form if necessary.) \_\_\_\_\_

No allowable will be assigned to the well until all interests have been consolidated (by communitization, unitization, forced-pooling, or otherwise) or until a non-standard unit, eliminating such interests, has been approved by the Commission.



Scale: 1"=1000'

**CERTIFICATION**

I hereby certify that the information contained herein is true and complete to the best of my knowledge and belief.

Name  
**Steve S. Dunn**

Position  
**Operations Manager**

Company  
**Merrion Oil & Gas Corp.**

Date  
**4/15/85**

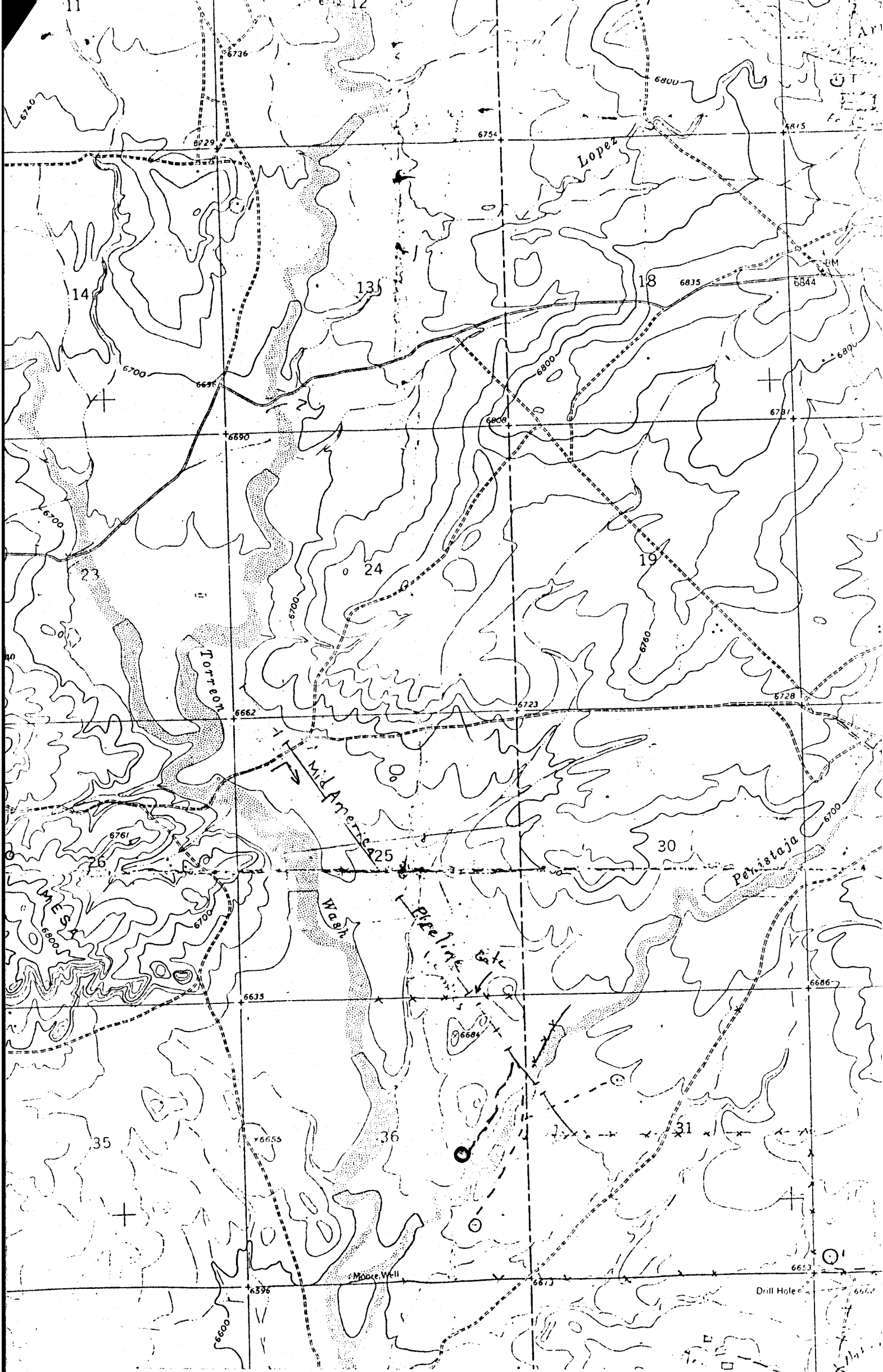
I hereby certify that the well location shown on this plat was plotted from field notes of actual surveys made by me or under my supervision, and that the same is true and correct to the best of my knowledge and belief.

Date Surveyed  
**April 12, 1985**

Registered Professional Engineer and Land Surveyor

**Fred B. Kerr Jr.**

Certificate No. **3950**



6682  
2

Vicinity Map for  
MERRION OIL & GAS CORPORATION # 1 Arena Blanca  
2360'FSL 1200'FEL Sec. 36-T20N-R5W  
MCKINLEY COUNTY NEW MEXICO

