

UNITED STATES
DEPARTMENT OF THE INTERIOR
BUREAU OF LAND MANAGEMENT

APPLICATION FOR PERMIT TO DRILL, DEEPEN, OR PLUG BACK

1a. TYPE OF WORK
DRILL ☒ DEEPEN ☐ PLUG BACK ☐

b. TYPE OF WELL
OIL WELL ☒ GAS WELL ☐ OTHER ☐
SINGLE ZONE ☒ MULTIPLE ZONE ☐

2. NAME OF OPERATOR
Merrion Oil & Gas Corporation

3. ADDRESS OF OPERATOR
P. O. Box 840, Farmington, New Mexico 87402

4. LOCATION OF WELL (Report location clearly and in accordance with any State requirements)
At surface 465' FSL and 465' FEL
At proposed prod. zone Same

14. DISTANCE IN MILES AND DIRECTION FROM NEAREST TOWN OR POST OFFICE
21 Miles South of Counselors

15. DISTANCE FROM PROPOSED* LOCATION TO NEAREST PROPERTY OR LEASE LINE, FT. (Also to nearest drlg. unit line, if any) 465'
16. NO. OF ACRES IN LEASE 1565.56

18. DISTANCE FROM PROPOSED LOCATION* TO NEAREST WELL, DRILLING, COMPLETED, OR APPLIED FOR, ON THIS LEASE, FT. 3225'
17. NO. OF ACRES ASSIGNED TO THIS WELL 40

21. ELEVATIONS (Show whether DF, RT, GR, etc.)
6921' GL, 6929' KB

23. PROPOSED CASING AND CEMENTING PROGRAM

SIZE OF HOLE	SIZE OF CASING	WEIGHT PER FOOT	SETTING DEPTH
8-5/8"	J-55	23 #/ft.	90 KB
7-7/8"	5-1/2", J-55	14 #/ft.	3225'

This action is subject to technical and procedural review pursuant to 43 CFR 3165.3 and appeal pursuant to 43 CFR 3165.4.
80 sx (94.4) (Est. csg. length 82')
350 sx (as below)

Drill Mesaverde test to 3225'. Will set 8-5/8", 23 #/ft. J-55 surface casing (2 joints) at 90 ft. with 80 sx Class B 2% CaCl2 (94.4 cu. ft.). Drill 7-7/8" hole to TD. Will run 5-1/2", 14 #/ft. K-55 to TD and single stage cement with 150 sx Class B 2% D-79 (309 cu. ft.) followed by 200 sx Class H 2% gel (244 cu. ft.). Estimated top of cement - surface. Perforate and stimulate as necessary to test Mesaverde. Pressure control will be 2000 PSI bag type blowout preventer. Drilling circulating medium will be low solids, non-dispersed, low water loss mud using bentonite, starch, CMC and fresh water.

IN ABOVE SPACE DESCRIBE PROPOSED PROGRAM: If proposal is to deepen or plug back, give data on present productive zone and proposed new productive zone. If proposal is to drill or deepen directionally, give pertinent data on subsurface locations and measured and true vertical depths. Give blowout preventer program, if any.

24. SIGNED [Signature] TITLE Operations Manager DATE 1/8/86

(This space for Federal or State office use)

PERMIT NO. APPROVAL DATE

APPROVED BY DATE

CONDITIONS OF APPROVAL, IF ANY:

FEB 26 1986
OIL CON. DIV.
DISMOC

*See Instructions On Reverse Side

Title 18 U.S.C. Section 1001, makes it a crime for any person knowingly and willfully to make to any department or agency of the United States any false, fictitious or fraudulent statements or representations as to any matter within its jurisdiction.

03/11/73

10/11/73

10/11/73

NEW MEXICO OIL CONSERVATION COMMISSION
WELL LOCATION AND ACREAGE DEDICATION PLAT

Form C-102
Supersedes C-128
Effective 1-1-65

All distances must be from the outer boundaries of the Section.

Operator MERRION OIL & GAS CORPORATION			Lease Corrales		Well No. 4
Unit Letter P	Section 3	Township 20 North	Range 5 West	County McKinley	
Actual Footage Location of Well: 465 feet from the South line and 465 feet from the East line					
Ground Level Elev. 6921	Producing Formation Mesaverde		Pool Farmington Lake Mc Mesaverde	Dedicated Acreage: 40 Acres	

1. Outline the acreage dedicated to the subject well by colored pencil or hachure marks on the plat below.
2. If more than one lease is dedicated to the well, outline each and identify the ownership thereof (both as to working interest and royalty).
3. If more than one lease of different ownership is dedicated to the well, have the interests of all owners been consolidated by communitization, unitization, force-pooling, etc?

☐ Yes ☐ No If answer is "yes," type of consolidation _____

If answer is "no," list the owners and tract descriptions which have actually been consolidated. (Use reverse side of this form if necessary.) _____

No allowable will be assigned to the well until all interests have been consolidated (by communitization, unitization, forced-pooling, or otherwise) or until a non-standard unit, eliminating such interests, has been approved by the Commission.

<div style="text-align: center;"> RECEIVED JAN 14 1986 BUREAU OF LAND MANAGEMENT FARMINGTON RESOURCE AREA </div>		<div style="text-align: center;"> RECEIVED EEB 26 1986 OIL CON. DIV. DIST. 3 </div>	
		<div style="text-align: center;"> 3 </div>	
<div style="text-align: center;"> Sec. </div>		<div style="text-align: center;"> NM 53926 465' </div>	

Scale: 1"=1000'

CERTIFICATION

I hereby certify that the information contained herein is true and complete to the best of my knowledge and belief.

Name
Steve S. Dunn

Position
Operations Manager

Company
Merrion Oil & Gas Corporation

Date
12/18/85

I hereby certify that the well location shown on this plat was plotted from field notes of actual surveys made by me or under my supervision, and that the same is true and correct to the best of my knowledge and belief.

Date Surveyed
Dec. 12, 1985

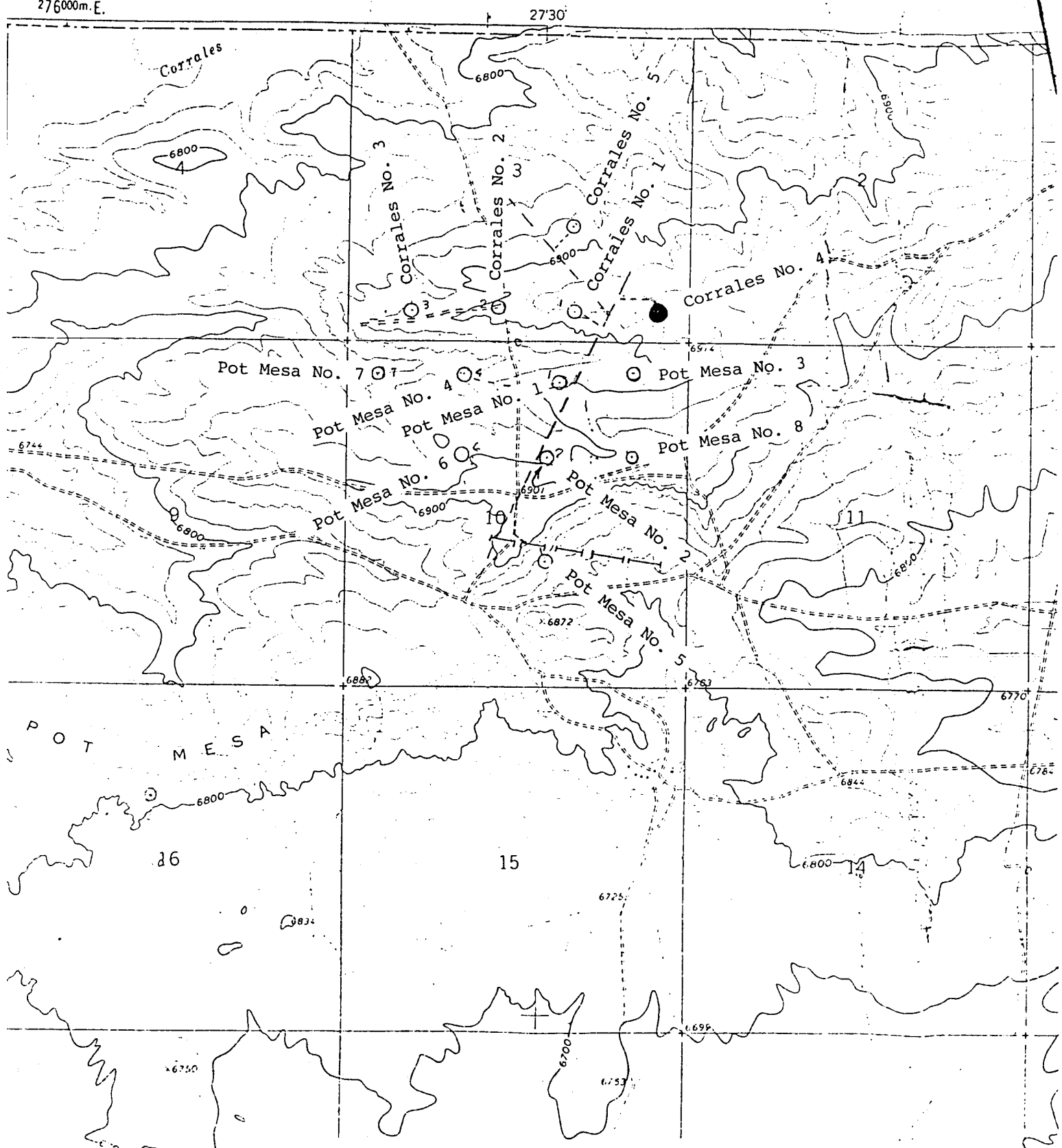
Registered Professional Engineer and Land Surveyor
Fred B. Kerr Jr.

Certificate No.
3950

RECEIVED

1964

3
 INTERIOR
 DEPT.
 276000m.E.



MERRION OIL & GAS CORP. #4 CORRALES
 465' FSL 465' FEL Sec. 3-T20N-R6W
 MCKINLEY COUNTY, NEW MEXICO