

30-031-20914

NO. OF COPIES RECEIVED	
DISTRIBUTION	
SANTA FE	
FILE	
U.S.G.S.	
LAND OFFICE	
OPERATOR	

NEW MEXICO OIL CONSERVATION COMMISSION

Form C-101  
Revised 1-1-65

5A. Indicate Type of Lease	
STATE <input type="checkbox"/>	FEE <input checked="" type="checkbox"/>
5. State Oil & Gas Lease No.	

APPLICATION FOR PERMIT TO DRILL, DEEPEN, OR PLUG BACK

1a. Type of Work		7. Unit Agreement Name	
b. Type of Well DRILL <input checked="" type="checkbox"/> DEEPEN <input type="checkbox"/> PLUG BACK <input type="checkbox"/>		NMALCO-GURLEY	
c. Name of Operator		8. Farm or Lease Name	
Black Oil, Inc.		4	
3. Address of Operator		9. Well No.	
P.O. Box 537, Farmington, NM 87499		Wildcat - Gallup	
4. Location of Well		10. Field and Pool, or Wildcat	
UNIT LETTER 0 LOCATED 330 FEET FROM THE South LINE		11. County	
AND 1750 FEET FROM THE East LINE OF SEC. 9 TWP. 20N RGE. 12W NMPM		McKinley	
19. Proposed Depth		19A. Formation	
2300		Hospah	
20. Rotary or C.T.		21. Approx. Date Work will start	
Rotary		June 1, 1986	
21. Elevations (Show whether DF, RT, etc.)		21A. Kind & Status Plug. Bond	
6129 GR		Blanket	
21B. Drilling Contractor		22. Approx. Date Work will start	
Salazar		June 1, 1986	

23.

PROPOSED CASING AND CEMENT PROGRAM

SIZE OF HOLE	SIZE OF CASING	WEIGHT PER FOOT	SETTING DEPTH	SACKS OF CEMENT	EST. TOP
9-5/8"	7"		200	To Surface	Surface
6-1/4"	4-1/2"	20#	2300	To Surface	Surface

We propose to drill a 9-5/8" hole to 200'. We will then set 200' of 7" surface casing. We will then drill a 6-1/4" hole to 2300' to test the Hospah sandstone. In the event oil sands are found, 4-1/2" casing will be run through the producing interval.

APPROVAL EXPIRES 12-23-86  
UNLESS DRILLING IS COMMENCED.  
SPUD NOTICE MUST BE SUBMITTED  
WITHIN 10 DAYS.

OIL CON. DIV.  
Dist. 3

IN ABOVE SPACE DESCRIBE PROPOSED PROGRAM: IF PROPOSAL IS TO DEEPEN OR PLUG BACK, GIVE DATA ON PRESENT PRODUCTIVE ZONE AND PROPOSED NEW PRODUCTIVE ZONE. GIVE BLOWOUT PREVENTER PROGRAM, IF ANY.

I hereby certify that the information above is true and complete to the best of my knowledge and belief.

Signed [Signature] Title President Date May 10, 1986

(This space for State Use)

APPROVED BY ORIGINAL SIGNED BY ERNIE BUSCH TITLE DEPUTY OIL & GAS INSPECTOR, DIST. #3 DATE JUN 24 1986

CONDITIONS OF APPROVAL, IF ANY:

## OIL CONSERVATION DIVISION

STATE OF NEW MEXICO  
ENERGY AND MINERALS DEPARTMENT

P.O. BOX 2088  
SANTA FE, NEW MEXICO 87501

Form C-107  
Revised 10-1-79

All distances must be from the outer boundaries of the section.

Operator <b>BLACK OIL INC.</b>		Lease <b>NMALCO - GURLEY</b>		Well No. <b>4</b>
Unit Letter <b>0</b>	Section <b>9</b>	Township <b>20 North</b>	Range <b>12 West</b>	County <b>McKinley</b>
Actual Footage Location of Well: (cardinal) <b>330</b> feet from the <b>South</b> line and <b>1750</b> feet from the <b>East</b> line				
Ground Level Elev. <b>6129'</b>	Producing Formation <b>Hospah</b>	Pool <b>Wildcat</b>	Dedicated Acreage: <b>40</b> Acres	

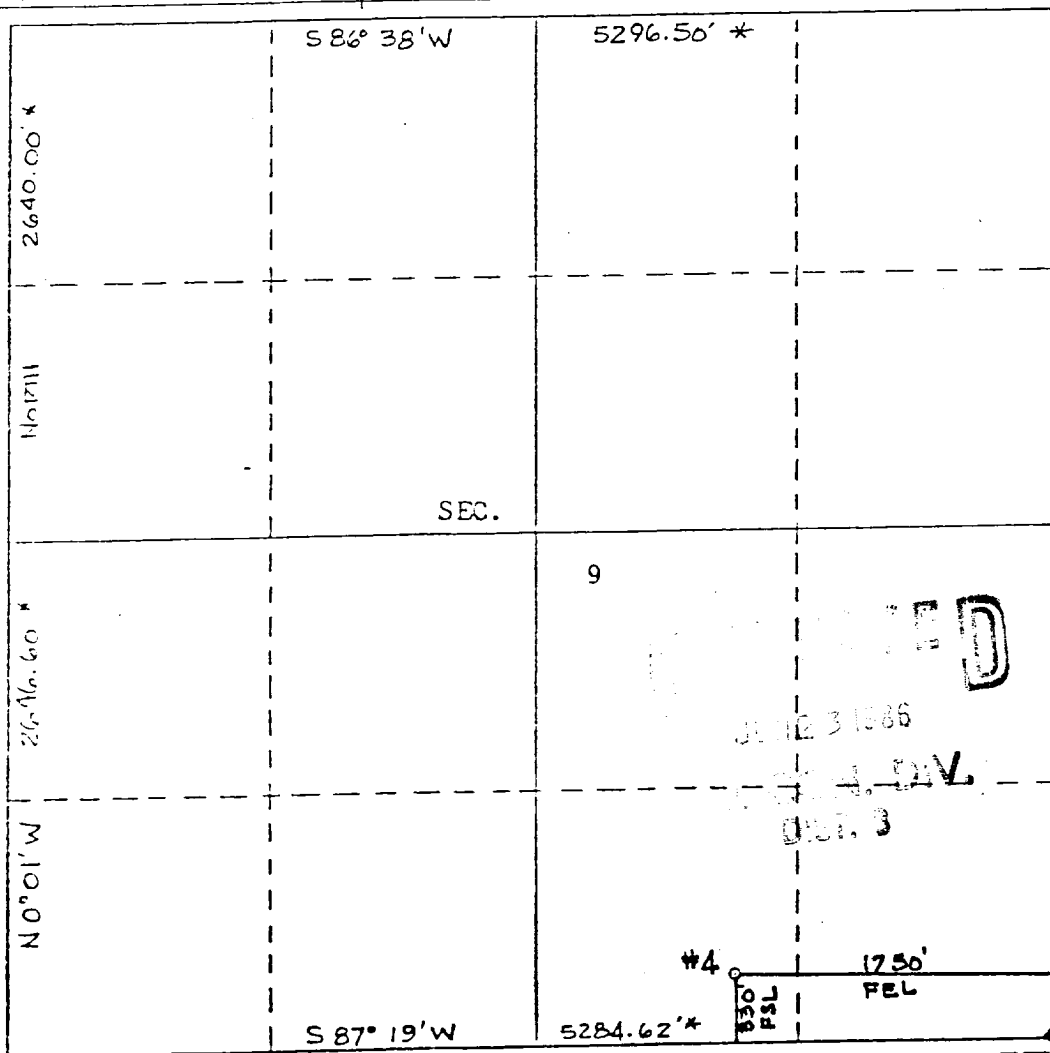
1. Outline the acreage dedicated to the subject well by colored pencil or hatchure marks on the plat below.
2. If more than one lease is dedicated to the well, outline each and identify the ownership thereof (both as to working interest and royalty).
3. If more than one lease of different ownership is dedicated to the well, have the interests of all owners been consolidated by communitization, unitization, force-pooling, etc?

☐ Yes ☐ No If answer is "yes," type of consolidation \_\_\_\_\_

If answer is "no," list the owners and tract descriptions which have actually been consolidated. (Use reverse side of this form if necessary.) \_\_\_\_\_

No allowable will be assigned to the well until all interests have been consolidated (by communitization, unitization, forced-pooling, or otherwise) or until a non-standard unit, eliminating such interests, has been approved by the Division.

\* Record GLO 1950 plat ♦ Fd. GLO 1948 B.C. Corner



## CERTIFICATION

I hereby certify that the information contained herein is true and complete to the best of my knowledge and belief.

Name

**Bruce A. Black**

Position

**President**

Company

**Black Oil, Inc.**

Date

**May 28, 1986**

I hereby certify that the well location shown on this plat was plotted from field notes of actual surveys made by me or under my supervision, and that the same is true and correct to the best of my knowledge and belief.

Date Surveyed

**May 28, 1986**

Registered Professional Engineer and/or Land Surveyor

Certificate No.

**8894**