

UNITED STATES  
DEPARTMENT OF THE INTERIOR  
GEOLOGICAL SURVEY

## APPLICATION FOR PERMIT TO DRILL, DEEPEN, OR PLUG BACK

## 1a. TYPE OF WORK

DRILL ☒DEEPEN ☐PLUG BACK ☐

## b. TYPE OF WELL

OIL  
WELL ☒GAS  
WELL ☐

OTHER

SINGLE  
ZONE ☒MULTIPLE  
ZONE ☐

## 2. NAME OF OPERATOR

BLACK OIL, INC.

## 3. ADDRESS OF OPERATOR

P.O. BOX 537, Farmington, NM 87499

## 4. LOCATION OF WELL (Report location clearly and in accordance with any State requirements)

At surface 330' SFL, 1650' FWL

At proposed prod. zone

Same

## 14. DISTANCE IN MILES AND DIRECTION FROM NEAREST TOWN OR POST

25 Miles north of Crownpoint, New Mexico

## 15. DISTANCE FROM PROPOSED\*

LOCATION TO NEAREST  
PROPERTY OR LEASE LINE, FT.  
(Also to nearest drlg. unit line, if any)

330' South

## 18. DISTANCE FROM PROPOSED LOCATION\*

TO NEAREST WELL, DRILLING, COMPLETED,  
OR APPLIED FOR, ON THIS LEASE, FT.

660' West

## 21. ELEVATIONS (Show whether DF, RT, GR, etc.)

6149 GR

## 23.

SIZE OF HOLE	SIZE OF CASING	WEIGHT PER FOOT	SETTING DEPTH
12-1/4"	8-5/8"	24# J-55	200'
7-7/8"	5-1/2"	17# J-55	2300'

## 16. NO. OF ACRES IN LEASE

17,296.14 AC

## 19. PROPOSED DEPTH

2300'

## 17. NO. OF ACRES ASSIGNED

40.40 acres

## 20. ROTARY OR CABLE TOOLS

Rotary

## 22. APPROX. DATE WORK WILL START\*

March 10, 1987

DRILLING OPERATIONS AUTHORIZED ARE  
SUBJECT TO COMPLIANCE WITH ATTACHED  
GENERAL REQUIREMENTS.

165 Cu.ft. Class B Circ. to Surf.  
637 Cu.ft. Class B Circ. to Surf.  
1.18 Cu.ft./sack, 100% excess on  
surface casing and 60% on prod.  
casing, at 1.83 Cu.ft./sack.

Will drill 12-1/4" hole to 200' and set 200' of 8-5/8" 24# J-55 casing, cemented with 165 cu.ft. of Class B cement, circulated to surface. Will drill 7-7/8" hole to 2300' and set 2300' of 5-1/2" 17# J-55 casing and cement with 637 cu.ft. of Class B. cement circulated to surface. Circulating medium will be with clear water, natural mud and water loss control additives. No abnormal pressures or temperatures are anticipated. No gas is present in producing wells nearby. Will run induction and density logs. Blowout preventer schematic is attached; will use a 3000 PSI rated Reagan blatter type annular preventor. A good supply of mud will be on hand to control well as needed.

ESTIMATED TOPS: Surface Formation - Clays and Sand. (Menefee)

Point Lookout - 1060'  
Top Mancos - 1200'  
Hospah - 2065'  
Oil Sand - 2180'

IN ABOVE SPACE DESCRIBE PROPOSED PROGRAM: If proposal is to deepen or plug back, give data on present productive zone and proposed new productive zone. If proposal is to drill or deepen directionally, give pertinent data on subsurface locations and measured and true vertical depths. Give blowout preventer program, if any.

24.

SIGNED

TITLE

President

DATE January 29, 1987

(This space for Federal or State office use)

PERMIT NO.

APPROVAL DATE

APPROVED BY

TITLE

CONDITIONS OF APPROVAL, IF ANY:

APPROVED  
AS AMENDED

MAY 20 1987

AREA MANAGER

NMOCC

\*See Instructions On Reverse Side

NEW MEXICO OIL CONSERVATION COMMISSION  
WELL LOCATION AND ACREAGE DEDICATION PLAT

Form C-102  
Supersedes C-128  
Effective 1-1-65

All distances must be from the outer boundaries of the Section.

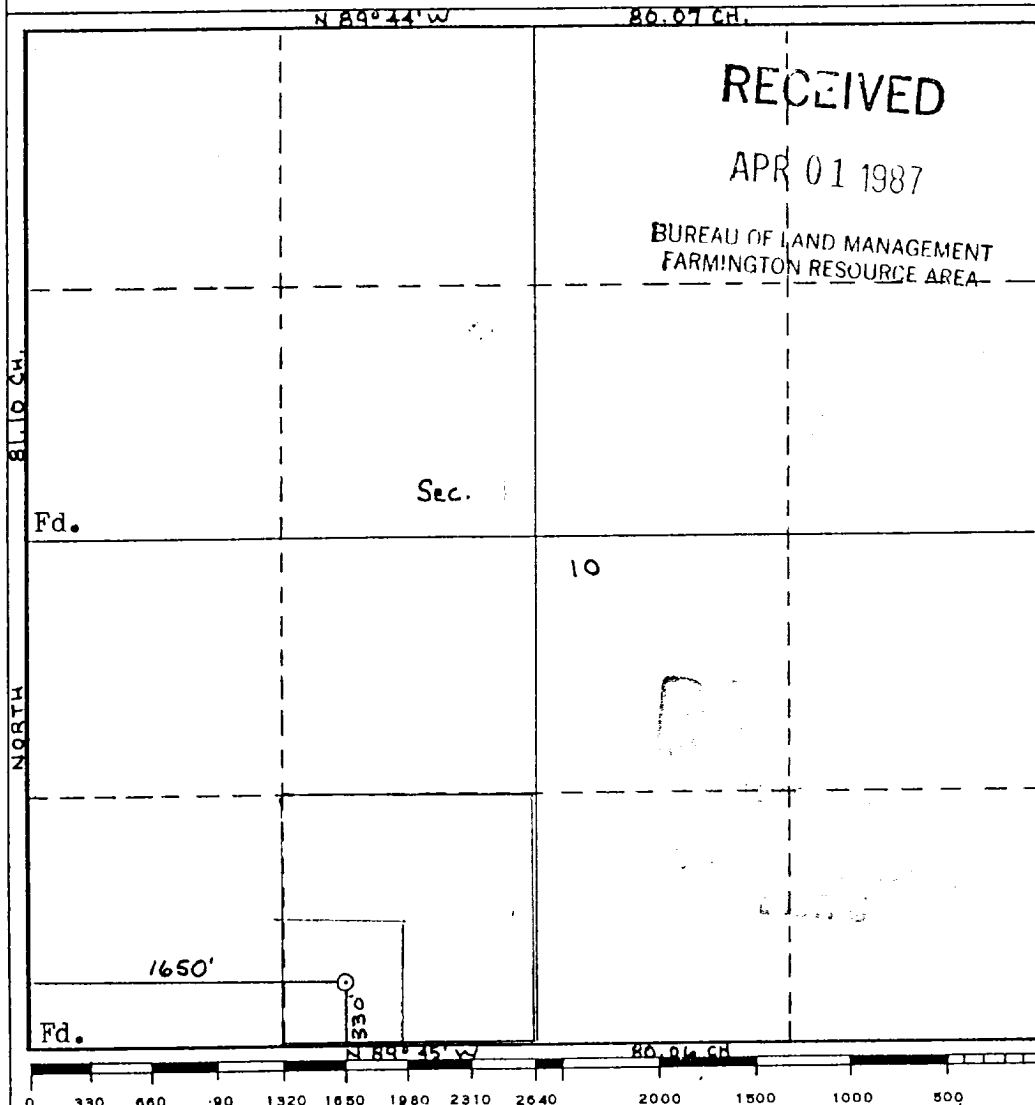
Operator <b>BLACK OIL, INC.</b>			Lease <b>SALAZAR NAVAJO CITO</b>		Well No. <b>5</b>
Unit Letter <b>N</b>	Section <b>10</b>	Township <b>20N</b>	Range <b>12W</b>	County <b>McKinley</b>	
Actual Footage Location of Well: <b>330</b> feet from the <b>South</b> line and <b>1650</b> feet from the <b>West</b> line					
Ground Level Elev. <b>6149</b>	Producing Formation <b>Hesperia</b>		Pool <b>Nose Rock EXT</b>	Dedicated Acreage: <b>40</b> Acres	

- Outline the acreage dedicated to the subject well by colored pencil or hatchure marks on the plat below.
- If more than one lease is dedicated to the well, outline each and identify the ownership thereof (both as to working interest and royalty). *Joint w/ 6, 7, 8*
- If more than one lease of different ownership is dedicated to the well, have the interests of all owners been consolidated by communitization, unitization, force-pooling, etc?

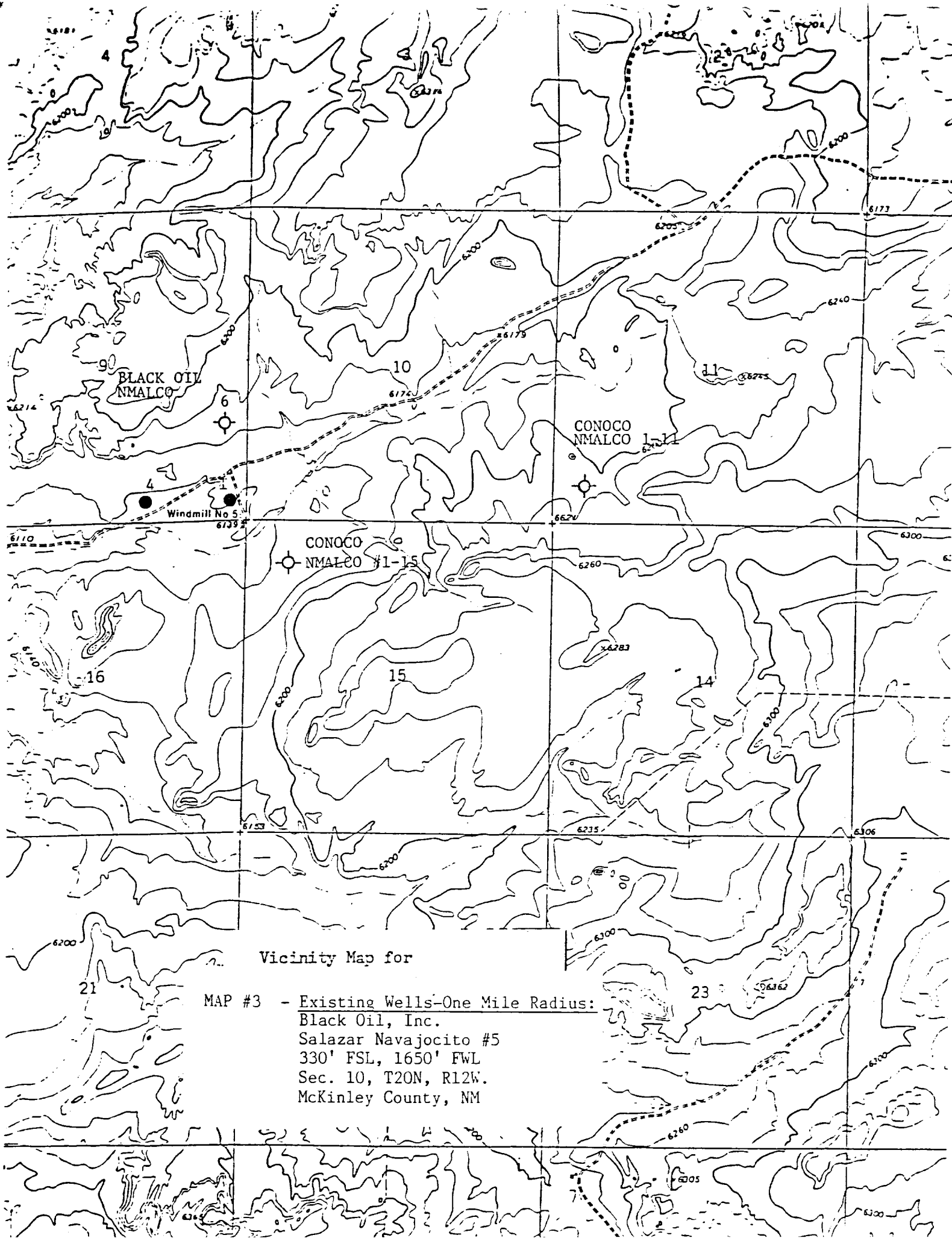
☐ Yes ☐ No If answer is "yes," type of consolidation \_\_\_\_\_

If answer is "no," list the owners and tract descriptions which have actually been consolidated. (Use reverse side of this form if necessary.) \_\_\_\_\_

No allowable will be assigned to the well until all interests have been consolidated (by communitization, unitization, forced-pooling, or otherwise) or until a non-standard unit, eliminating such interests, has been approved by the Commission.



CERTIFICATION	
I hereby certify that the information contained herein is true and complete to the best of my knowledge and belief.	
Name	<b>Bruce A. Black</b>
Position	<b>President</b>
Company	<b>Black Oil, Inc.</b>
Date	<b>January 29, 1987</b>
I hereby certify that the well location shown on this plat was plotted from field notes of actual surveys made by me or under my supervision, and that the same is true and correct to the best of my knowledge and belief.	
Date Surveyed	<b>1-5-87</b>
<b>William E. Mahnke II</b>	
Registered Professional Engineer and/or Land Surveyor	
Certificate No.	<b>81166</b>



Vicinity Map for

MAP #3 - Existing Wells-One Mile Radius:  
Black Oil, Inc.  
Salazar Navajocito #5  
330' FSL, 1650' FWL  
Sec. 10, T20N, R12W.  
McKinley County, NM