

APPROVAL EXPIRES 8-18-88
UNLESS DRILLING IS COMMENCED.
SPUD NOTICE MUST BE SUBMITTED
WITHIN 10 DAYS.

NEW MEXICO OIL CONSERVATION COMMISSION

Form C-101
Revised 1-1-65

NO. OF COPIES RECEIVED	
DISTRIBUTION	
SANTA FE	
FILE	
U.S.G.S.	
LAND OFFICE	
OPERATOR	

30-031-20933

5A. Indicate Type of Lease	
STATE <input type="checkbox"/>	FEE <input checked="" type="checkbox"/>
5. State Oil & Gas Lease No.	

APPLICATION FOR PERMIT TO DRILL, DEEPEN, OR PLUG BACK

1a. Type of Work		7. Unit Agreement Name	
b. Type of Well DRILL <input checked="" type="checkbox"/> DEEPEN <input type="checkbox"/> PLUG BACK <input type="checkbox"/> OIL WELL <input checked="" type="checkbox"/> GAS WELL <input type="checkbox"/> OTHER <input type="checkbox"/> SINGLE ZONE <input checked="" type="checkbox"/> MULTIPLE ZONE <input type="checkbox"/>		8. Farm or Lease Name NMALCO BLACK	
2. Name of Operator BLACK OIL, INC.		9. Well No. 1	
3. Address of Operator P.O. BOX 537, FARMINGTON, NM 87499		10. Field and Pool, or Wildcat NOSE ROCK - HOSPAH EXT.	
4. Location of Well UNIT LETTER <u>D</u> LOCATED <u>330'</u> FEET FROM THE <u>North</u> LINE AND <u>330</u> FEET FROM THE <u>west</u> LINE OF SEC. <u>15</u> TWP. <u>20N</u> RGE. <u>12W</u> NMPM		12. County McKinley	
19. Proposed Depth 2300'		19A. Formation Hospah	20. Rotary or C.T. Rotary
21. Elevations (Show whether DF, RT, etc.) 6135'	21A. Kind & Status Plug. Bond Blanket	21B. Drilling Contractor Salazar	22. Approx. Date Work will start April 1, 1988

PROPOSED CASING AND CEMENT PROGRAM

SIZE OF HOLE	SIZE OF CASING	WEIGHT PER FOOT	SETTING DEPTH	SACKS OF CEMENT	EST. TOP
12-1/4"	8-5/8"	24#	100'	75 sks 88 cu.ft.	Surface
7-7/8"	5-1/2"	15.5#/ft.	2300'	325 sks. 65/35 PC2	
				plus 75 sks. C1. "B"	
				Neat. 486 cu.ft.	

We propose to drill a 12-1/4" hole to 100' and set 100' of 8-5/8" 24# surface casing. We will cement to surface with 75 sacks (88 cu.ft.) class B neat cement. We will then drill a 7-7/8" hole to 2300' and run open hole logs. In the event oil sands are found, we will run 5-1/2" 15.5# casing and cement to surface with 325 sks. 65/35 light cement (595 cu.ft.) and 75 sks class B neat cement (88.5 cu.ft.).

IN ABOVE SPACE DESCRIBE PROPOSED PROGRAM: IF PROPOSAL IS TO DEEPEN OR PLUG BACK, GIVE DATA ON PRESENT PRODUCTIVE ZONE AND PROPOSED NEW PRODUCTIVE ZONE. GIVE BLOWOUT PREVENTER PROGRAM, IF ANY.

I hereby certify that the information above is true and complete to the best of my knowledge and belief.

Signed Sam Stone Title President Date 2/10/88

(This space for State Use)

APPROVED BY Sam Stone TITLE DEPUTY OIL & GAS INSPECTOR, DIST. 3 DATE FEB 18 1988

CONDITIONS OF APPROVAL, IF ANY:

NEW MEXICO OIL CONSERVATION COMMISSION
WELL LOCATION AND ACREAGE DEDICATION PLAT

Form C-102
Supersedes C-128
Effective 1-1-65

All distances must be from the outer boundaries of the Section.

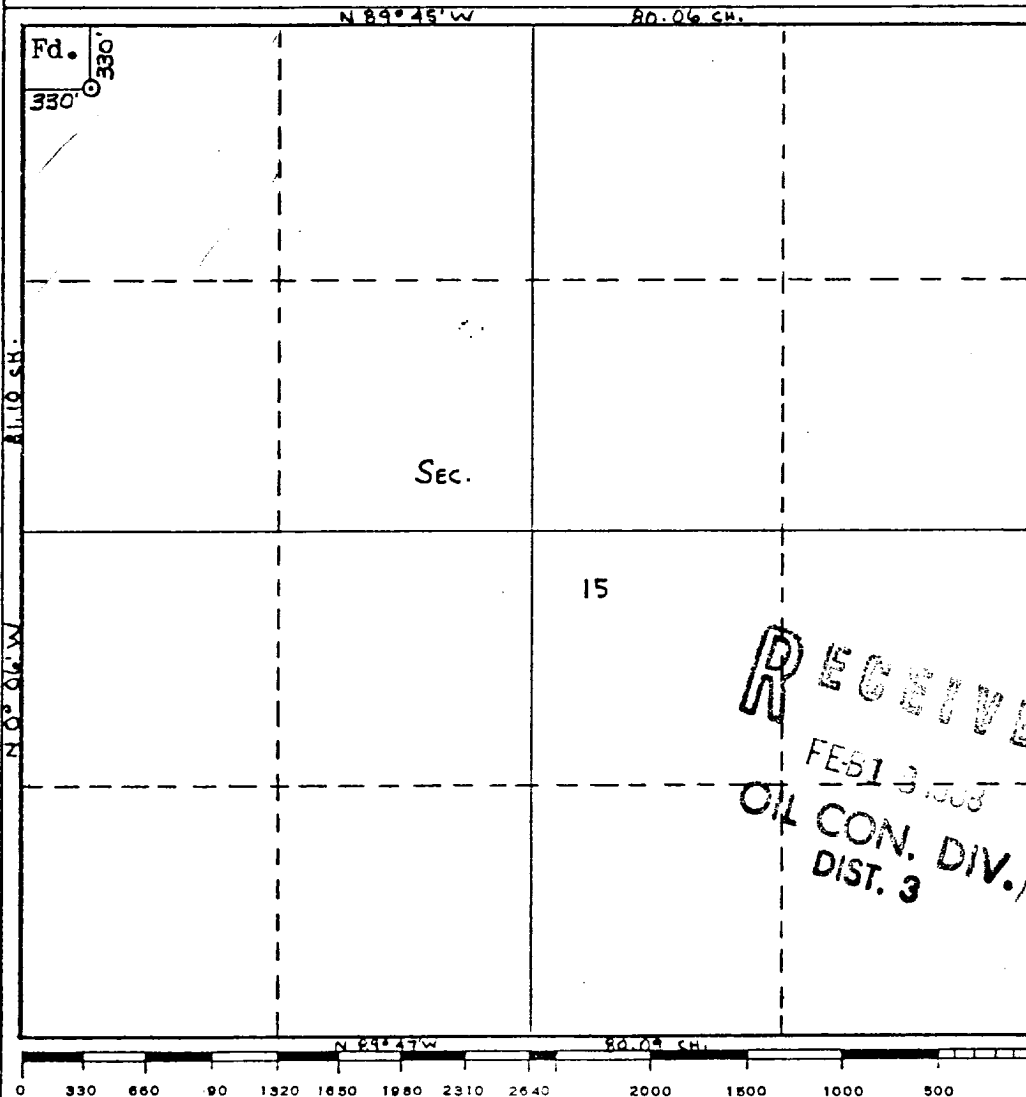
Operator BLACK OIL, INC.		Lease NMALCO BLACK		Well No. 1
Unit Letter D	Section 15	Township 20N	Range 12W	County McKinley
Actual Footage Location of Well: 330 feet from the North line and 330 feet from the West line				
Ground Level Elev. 6135	Producing Formation HOSPAN	Pool NOSE ROCK-HOSPAN EXT	Dedicated Acreage: 40 Acres	

1. Outline the acreage dedicated to the subject well by colored pencil or hatchure marks on the plat below.
2. If more than one lease is dedicated to the well, outline each and identify the ownership thereof (both as to working interest and royalty).
3. If more than one lease of different ownership is dedicated to the well, have the interests of all owners been consolidated by communitization, unitization, force-pooling, etc?

☐ Yes ☐ No If answer is "yes," type of consolidation _____

If answer is "no," list the owners and tract descriptions which have actually been consolidated. (Use reverse side of this form if necessary.) _____

No allowable will be assigned to the well until all interests have been consolidated (by communitization, unitization, forced-pooling, or otherwise) or until a non-standard unit, eliminating such interests, has been approved by the Commission.



CERTIFICATION

I hereby certify that the information contained herein is true and complete to the best of my knowledge and belief.

Name

Position

President

Company

Black Oil, Inc.

Date

2/11/88

I hereby certify that the well location shown on this plat was plotted from field notes of actual surveys made by me or under my supervision, and that the same is true and correct to the best of my knowledge and belief.

Date Surveyed

William E. Mahoney II

Registered Professional Engineer and Land Surveyor

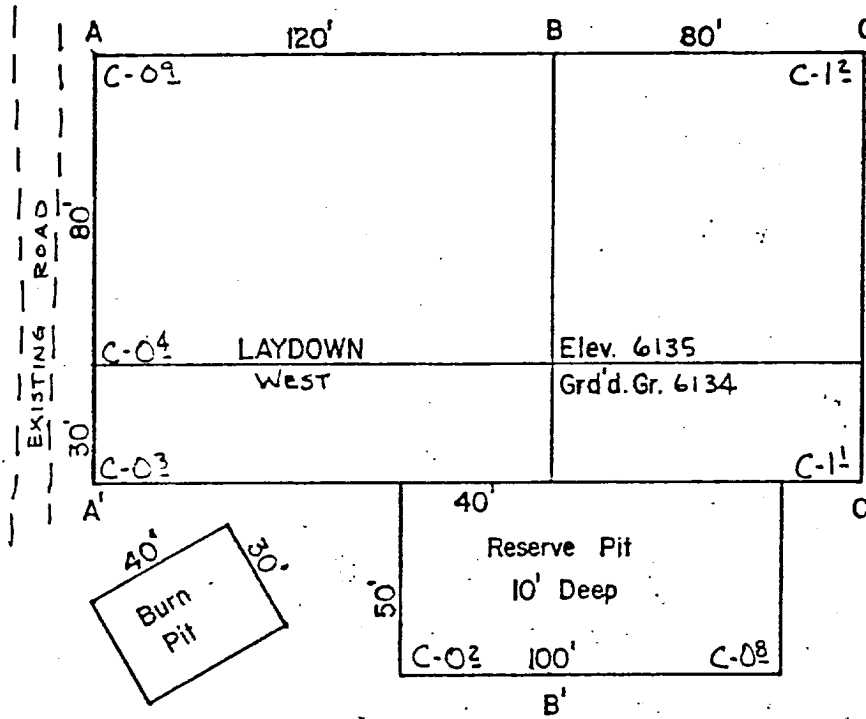
#8466

Certificate No. 8466

RECEIVED
FEB 13 1988
OIL CON. DIV.
DIST. 3

W 10° 06' N 81.08 CH.

BLACK OIL, INC.
 #1 NMALCO BLACK
 330FNL & 330FWL
 Sec.15, T20N, R12W
 McKinley Co., N.M.



Scale: 1" = 50'

A-A' Vert.: 1" = 30' Horiz.: 1" = 100' C/L

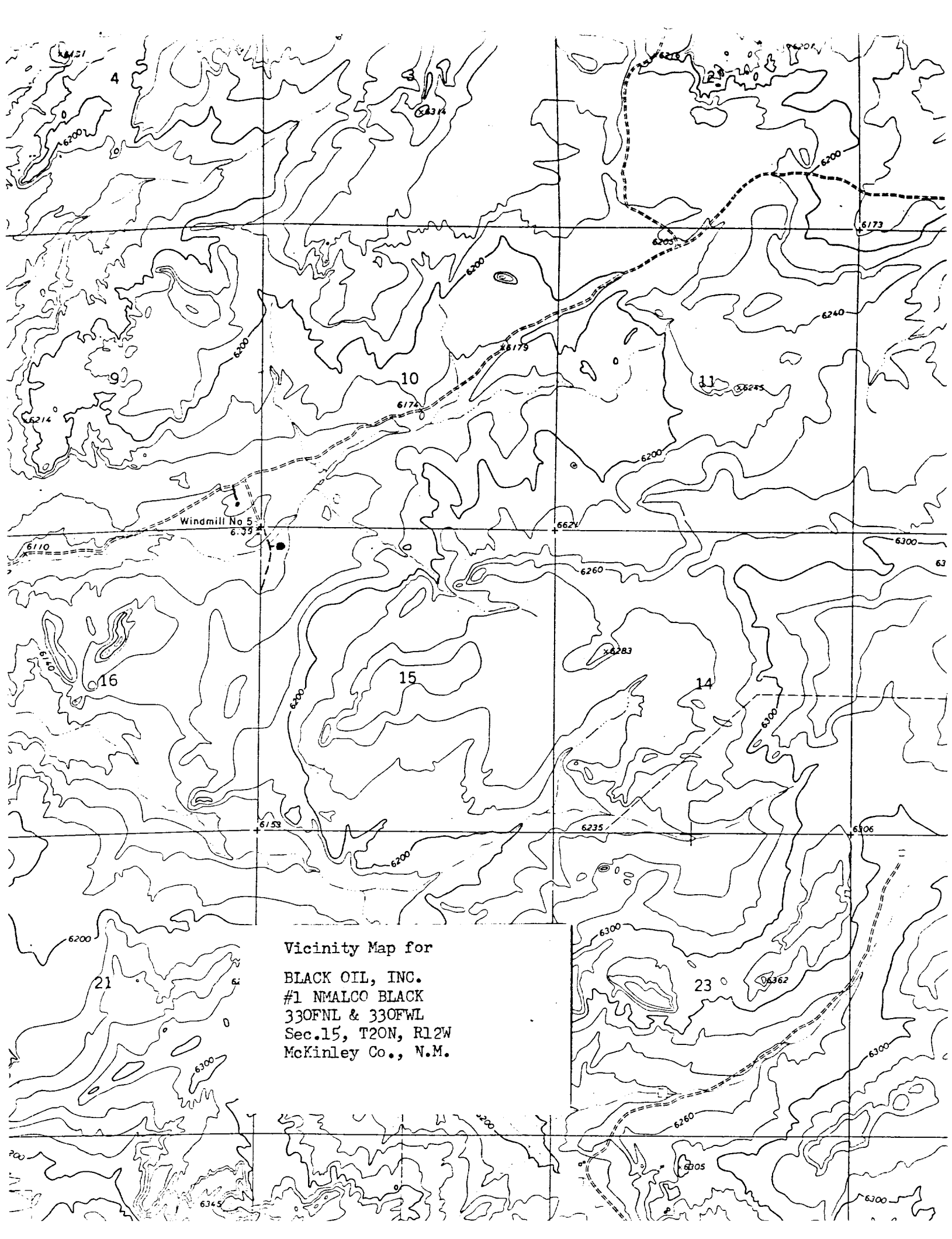
6140						
6130						

B-B'

6140						
6130						

C-C'

6140						
6130						



Vicinity Map for
BLACK OIL, INC.
#1 NMALCO BLACK
330FNL & 330FWL
Sec.15, T20N, R12W
McKinley Co., N.M.