

1- Well File
Submit to Appropriate
District Office
State Lease - 6 copies
Fee Lease - 5 copies

State of New Mexico
Energy, Minerals and Natural Resources Department

Form C-101
Revised 1-1-89

OIL CONSERVATION DIVISION

P.O. Box 2088
Santa Fe, New Mexico 87504-2088

DISTRICT I
P.O. Box 1980, Hobbs, NM 88240

DISTRICT II
P.O. Drawer DD, Artesia, NM 88210

DISTRICT III
1000 Rio Brazos Rd., Aztec, NM 87410

API NO. (assigned by OCD on New Wells)

30-031-20960

5. Indicate Type of Lease

STATE ☐

FEE ☒

6. State Oil & Gas Lease No.

APPLICATION FOR PERMIT TO DRILL, DEEPEN, OR PLUG BACK

1a. Type of Work:

DRILL ☒

RE-ENTER ☐

DEEPEN ☐

PLUG BACK ☐

b. Type of Well:

OIL
WELL ☒

GAS
WELL ☐

OTHER ☐

SINGLE
ZONE ☐

MULTIPLE
ZONE ☐

7. Lease Name or Unit Agreement Name

Boomer Sooner

2. Name of Operator

Merrion Oil & Gas Corporation

8. Well No.

1

40

3. Address of Operator

P. O. Box 840, Farmington, New Mexico 87499

9. Pool name or Wildcat

Wildcat Entrada

4. Well Location

Unit Letter B : 990 Feet From The North Line and 2305 Feet From The East Line

Section 21 Township 16N Range 9W NMPM McKinley County

10. Proposed Depth

3300'

11. Formation

Entrada

12. Rotary or C.T.

Rotary

13. Elevations (Show whether DF, RT, GR, etc.)

7099' GR

14. Kind & Status Plug. Bond

Nationwide

15. Drilling Contractor

Joe Salazar

16. Approx. Date Work will start

October 1991

17.

PROPOSED CASING AND CEMENT PROGRAM

| SIZE OF HOLE | SIZE OF CASING | WEIGHT PER FOOT | SETTING DEPTH | SACKS OF CEMENT | EST. TOP |
|--------------|----------------|-----------------|---------------|-----------------|----------|
| 12-1/4" | 8-5/8" | 32#/ft | 100 ft. 120 | 50 sx | Surface |
| 7-7/8" | 5-1/2" | 15.5#/ft | 3300 ft. | 400 sx | Surface |
| | | | | | |

Propose to drill 12-1/4" hole to 100'. Will set 8-5/8" surface at 100 ft. WOCT for 10 hours, install BOPS. Pressure test to 600 psi prior to drill out. Drill 7-7/8" hole into Entrada. Run DST of Entrada if desired. Drill to TD @ 3300'. Run logs. If productive, will set 5-1/2", 15.5# casing thru and cement in place.

APPROVAL EXPIRES 4-18-92
UNLESS DRILLING IS COMMENCED.
SPUD NOTICE MUST BE SUBMITTED
WITHIN 10 DAYS.

RECEIVED
OCT 18 1991.
OIL CON. DIV
DIST. 3

IN ABOVE SPACE DESCRIBE PROPOSED PROGRAM: IF PROPOSAL IS TO DEEPEN OR PLUG BACK, GIVE DATA ON PRESENT PRODUCTIVE ZONE AND PROPOSED NEW PRODUCTIVE ZONE. GIVE BLOWOUT PREVENTER PROGRAM, IF ANY.

I hereby certify that the information above is true and complete to the best of my knowledge and belief.

SIGNATURE Steven S. Dunn TITLE Operations Manager DATE 10/17/91

TYPE OR PRINT NAME TELEPHONE NO.

(This space for State Use)

APPROVED BY Eric Busch DEPUTY OIL & GAS INSPECTOR, DIST. #3 DATE OCT 18 1991

CONDITIONS OF APPROVAL, IF ANY:

Note log surface Csg change

Submit to Appropriate
District Office
State Lease - 4 copies
Fee Lease - 3 copies

State of New Mexico
Energy, Minerals and Natural Resources Department

Form C-102
Revised 1-1-89

OIL CONSERVATION DIVISION

P.O. Box 2088

Santa Fe, New Mexico 87504-2088

DISTRICT I

P.O. Box 1980, Hobbs, NM 88240

DISTRICT II

P.O. Drawer DD, Artesia, NM 88210

DISTRICT III

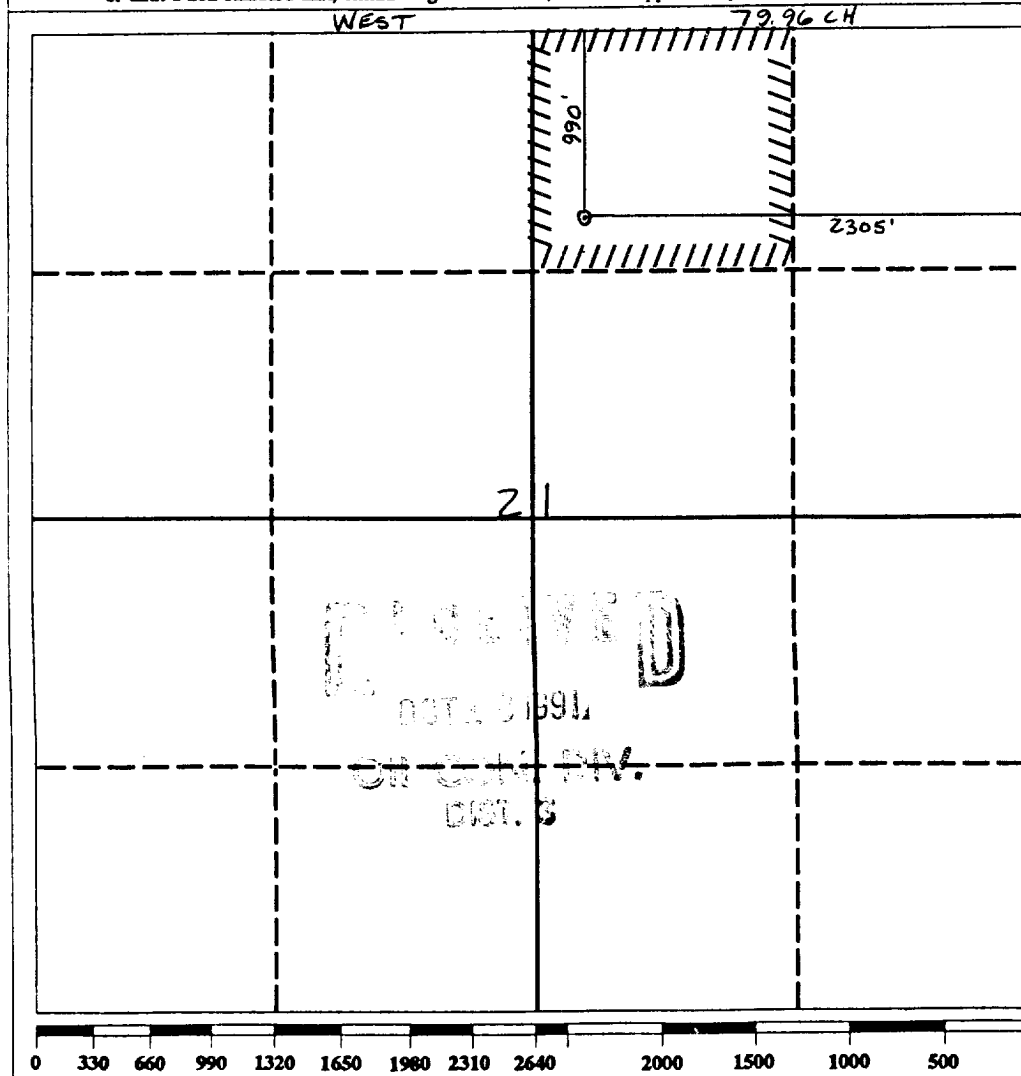
1000 Rio Brazos Rd., Aztec, NM 87410

WELL LOCATION AND ACREAGE DEDICATION PLAT

All Distances must be from the outer boundaries of the section

| | | | | | |
|---|---------------------------------------|------------------------|-------------------------------|---------------------------|---------------------------------------|
| Operator Merrion Oil & Gas Corporation | | | Lease Boomer Sooner | | Well No. 1 |
| Unit Letter B | Section 21 | Township 16N | Range 9W | County Mckinley | |
| Actual Footage Location of Well: 990 feet from the North line and 2305 feet from the East line | | | | | |
| Ground level Elev. 7099' | Producing Formation Entrada | | Pool Wildcat | | Dedicated Acreage: 40 Acres |

1. Outline the acreage dedicated to the subject well by colored pencil or hachure marks on the plat below.
2. If more than one lease is dedicated to the well, outline each and identify the ownership thereof (both as to working interest and royalty).
3. If more than one lease of different ownership is dedicated to the well, have the interest of all owners been consolidated by communitization, unitization, force-pooling, etc.?
☐ Yes ☐ No If answer is "yes" type of consolidation _____
If answer is "no" list the owners and tract descriptions which have actually been consolidated. (Use reverse side of this form if necessary.) _____
No allowable will be assigned to the well until all interests have been consolidated (by communitization, unitization, forced-pooling, or otherwise) or until a non-standard unit, eliminating such interest, has been approved by the Division.



OPERATOR CERTIFICATION

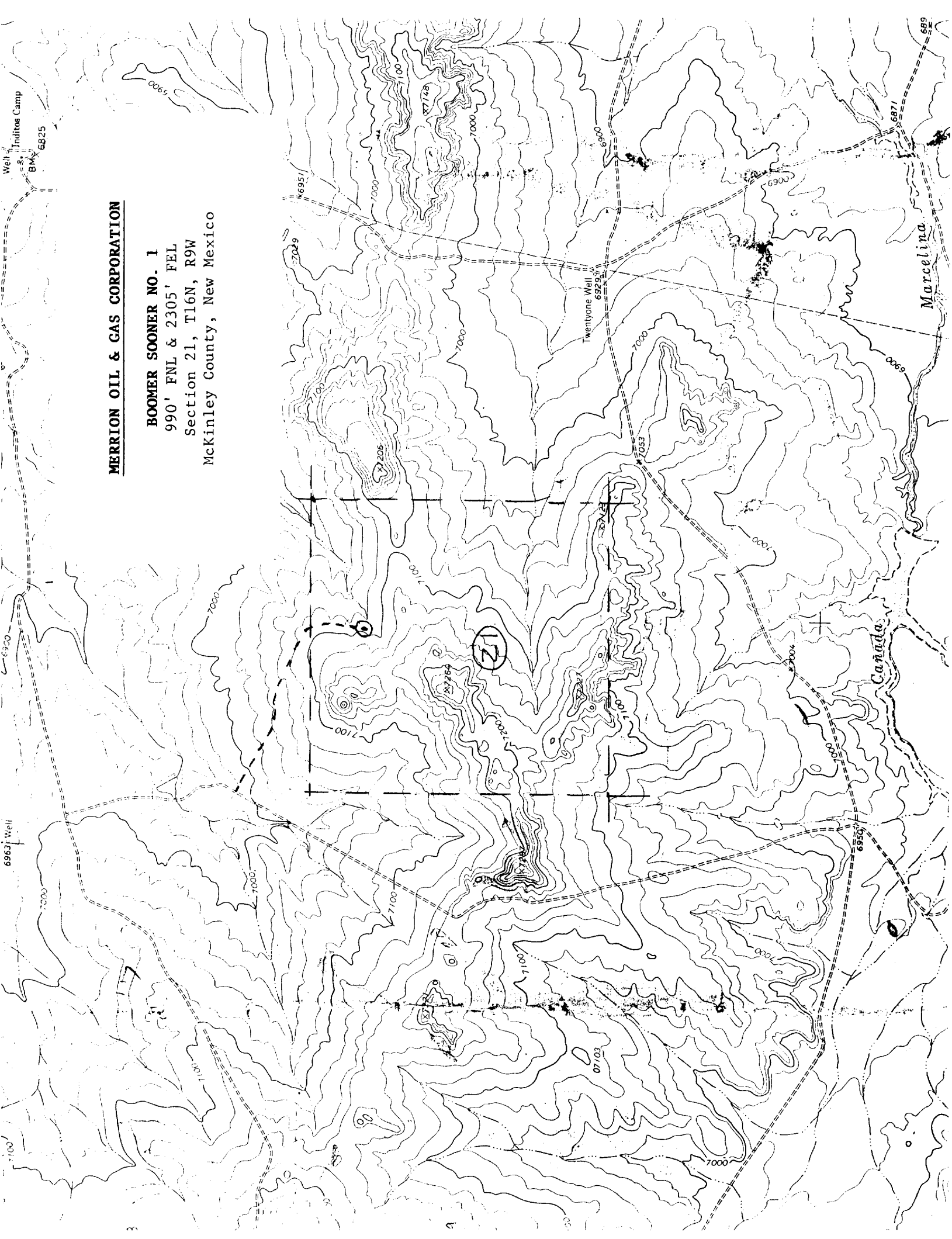
I hereby certify that the information contained herein is true and complete to the best of my knowledge and belief.

Signature *[Signature]*
Printed Name **Steven S. Dunn**
Position **Operations Manager**
Company **Merrion Oil & Gas Corp.**
Date **October 17, 1991**

SURVEYOR CERTIFICATION

I hereby certify that the well location shown on this plat was plotted from field notes of actual surveys made by me or under my supervision, and that the same is true and correct to the best of my knowledge and belief.

Date Surveyed **10/16/91**
Signature & Seal of Professional Surveyor *[Signature]*
Certificate No. **18466**



MERRION OIL & GAS CORPORATION

BOOMER SOONER NO. 1

990' FNL & 2305' FEL

Section 21, T16N, R9W

McKinley County, New Mexico