

UNITED STATES
DEPARTMENT OF THE INTERIOR
BUREAU OF LAND MANAGEMENT

SUNDRY NOTICES AND REPORTS ON WELLS

Do not use this form for proposals to drill or to deepen or reentry to a different reservoir.
Use "APPLICATION FOR PERMIT—" for such proposals

SUBMIT IN TRIPLICATE

1. Type of Well
☒ Oil Well ☐ Gas Well ☐ Other

2. Name of Operator
Bannon Energy Incorporated

3. Address and Telephone No.
3934 FM 1960 West, Suite 240, Houston, Texas 77068-3539

4. Location of Well (Footage, Sec., T., R., M., or Survey Description)

SW/4 SW/ 790' FSL & 890' FWL - Sec. 11, T23N, R7W

FORM APPROVED
Budget Bureau No. 1004-0135
Expires: March 31, 1993

5. Lease Designation and Serial No.

NMSF-078359

6. If Indian, Allottee or Tribe Name

7. If Unit or CA, Agreement Designation

8. Well Name and No.

Vandengurg #11 #1

9. API Well No.

30-039-05089

10. Field and Pool, or Exploratory Area

Lybrook Gallup

11. County or Parish, State

Rio Arriba, New Mexico

12. CHECK APPROPRIATE BOX(s) TO INDICATE NATURE OF NOTICE, REPORT, OR OTHER DATA

TYPE OF SUBMISSION

- ☒ Notice of Intent
☐ Subsequent Report
☐ Final Abandonment Notice

TYPE OF ACTION

- ☒ Abandonment
☐ Recompletion
☐ Plugging Back
☐ Casing Repair
☐ Altering Casing
☐ Other

- ☐ Change of Plans
☐ New Construction
☐ Non-Routine Fracturing
☐ Water Shut-Off
☐ Conversion to Injection
☐ Dispose Water

(Note: Report results of multiple completion on Well Completion or Recompletion Report and Log form.)

13. Describe Proposed or Completed Operations (Clearly state all pertinent details, and give pertinent dates, including estimated date of starting any proposed work. If well is directionally drilled, give subsurface locations and measured and true vertical depths for all markers and zones pertinent to this work.)*

Propose to plug and abandon this well per the attached procedure.

RECEIVED
OCT - 6 1994

OIL CON. DIV.
DIST. 3

OIL CON. DIV.
DIST. 3

SEP 26 PM 12:48

14. I hereby certify that the foregoing is true and correct

Signed

Janie Myuch

Title

Regulatory Analyst

Date

9/8/94

(This space for Federal or State office use)

Approved by

Conditions of approval, if any:

Title

Date

APPROVED

Title 18 U.S.C. Section 1001, makes it a crime for any person knowingly and willfully to make to any department or agency of the United States any false, fictitious or fraudulent statements or representations as to any matter within its jurisdiction.

*See Instruction on Reverse Side

NH000

DISTRICT MANAGER

AUGUST 24, 1994

BANNON ENERGY INC.

Vandenburg 11-#1 (GI)
SW, Sec. 11, T23N, R7W
Rio Arriba County, New Mexico

PLUG AND ABANDONMENT PROCEDURE:

(All cement volumes use 100% excess outside pipe and 50' inside)

1. Install and/or test rig anchors. Prepare blow pit. Comply to all NMOCD, BLM and Bannan safety rules and regulations.
2. MOL and RUSU. Blow well down; kill with water if necessary; an 8.3 ppg wellbore fluid exceeds the exposed reservoirs' pressure. ND wellhead and NU BOP and stripping head; test BOP. POH and tally 2-3/8" tubing, visually inspect.
4. **Plug #1 (Gallup perms):** RIH with open ended tubing to PBTD; pump 20 bbls water down tubing. Mix 92 sxs Class B cement and spot balanced plug over Gallup perms from 5770' to 5362'. POH to 4000' and WOC. RIH and tag cement. POH above top of cement. Load well with water and circulate clean. Pressure test casing to 500#. POH with tubing.
5. **Plug #2 (Mesaverde top):** Perforate 4 squeeze holes at 3630'. Establish rate into squeeze holes if casing tested. PU 5-1/2" cement retainer and RIH; set at 3580'. Pressure test tubing to 1000#; establish rate into squeeze holes. With retainer at 3580' mix and spot 47 sxs Class B cement, squeeze 30 sxs outside casing from 3630' to 3530' through squeeze holes and leave 17 sxs inside casing. POH with tubing.
6. **Plug #3 (PC & Ft tops):** Pressure test casing to 500#. Perforate 4 squeeze holes at 2124'. Establish rate into squeeze holes if casing tested. PU 5-1/2" cement retainer and RIH; set at 2080'. Establish rate into squeeze holes. With retainer at 2080' mix and spot 118 sxs Class B cement, squeeze 81 sxs outside casing from 2124' to 1848' through squeeze holes above Fruitland and leave 37 sxs inside casing. POH with tubing.
7. **Plug #4 (Kt & OA tops):** Pressure test casing to 500#. Perforate 4 squeeze holes at 1615'. Establish rate into squeeze holes if casing tested. PU 5-1/2" cement retainer and RIH; set at 1565'. Establish rate into squeeze holes. With retainer at 1565' mix and spot 97 sxs Class B cement, squeeze 66 sxs outside casing from 1615' to 1390' through squeeze holes above Ojo Alamo and leave 31 sxs inside casing. POH and LD tubing and setting tool.
8. **Plug #5 (Surface)** Perforate 2 holes at 280'. Establish circulation out bradenhead valve. Mix approximately 80 sxs Class B cement and pump down 5-1/2" casing, circulate good cement out bradenhead valve. Shut in well and WOC.
9. ND BOP and cut off well head below surface casing flange and install P&A marker to BLM specs. RD and MOL. Cut off anchors. Restore location per BLM stipulations.

BANNON ENERGY INC.

Vandenburg #1 - 11
SW, Sec 11, T23N, R7W
Rio Arriba County, NM

Elevation: 7108' GL
Spudded: Dec, 1959

8-24-94

EXISTING WELL

Circulate cement
surface

8-5/8" 24# @ 230'
(110 sxs cement)

OA @ 1440'

Kt @ 1565'

Ft @ 1898'

PC @ 2074'

MV @ 3580'

TOC @ 4584'
(calc, 75%)

2-3/8" Tubing @ 5720'

GL @ 5436'

Gallup Perfs 5412' - 5728'

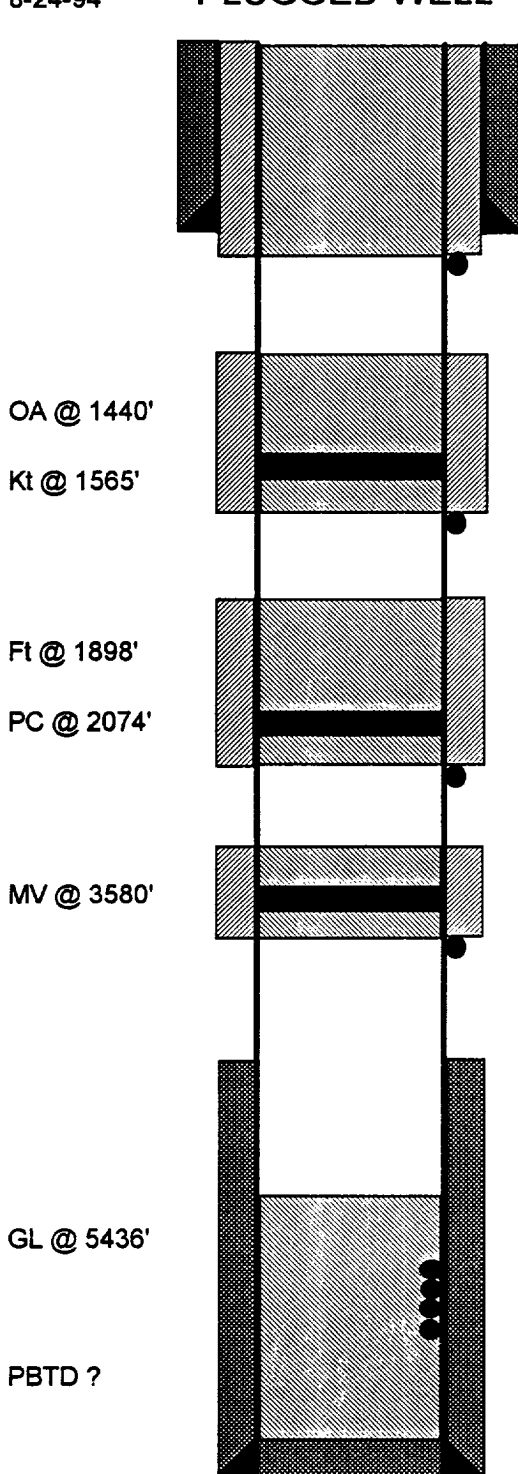
PBTD ?

5-1/2" 15.5# @ 5775'
(275 cf cement)

HOLE 7-7/8"

BANNON ENERGY INC.

8-24-94
PROPOSED
PLUGGED WELL



HOLE 7-7/8"

Circulate cement
surface

8-5/8" 24# @ 230'
(110 sxs cement)

Perf @ 280'

CR @ 1565
Perf @ 1615'

CR @ 2080'
Perf @ 2124'

CR @ 3580'
Perf @ 3630'

TOC @ 4584'
(calc, 75%)

Gallup Perfs 5412' - 5728'

5-1/2" 15.5# @ 5775'
(275 cf cement)

**Vandenburg #1 - 11
SW, Sec 11, T23N, R7W
Rio Arriba County, NM**

Plug #5 266' - Surface
80 sxs cement

Plug #4 1615' - 1390'
31 sxs Inside
66 sxs Outside

Plug #3 2124' - 1848'
37 sxs Inside
81 sxs Outside

Plug #2 3630' - 3530'
17 sxs Inside
30 sxs Outside

Plug #1 5770' - 5362'
92 sxs cement