

UNITED STATES
DEPARTMENT OF THE INTERIOR
GEOLOGICAL SURVEY

APPLICATION FOR PERMIT TO DRILL, DEEPEN, OR PLUG BACK

1a. TYPE OF WORK

DRILL ☒DEEPEN ☐PLUG BACK ☐

b. TYPE OF WELL

OIL
WELL ☐GAS
WELL ☒OTHER ☐SINGLE
ZONE ☒MULTIPLE
ZONE ☐

2. NAME OF OPERATOR

ODESSA NATURAL CORPORATION

3. ADDRESS OF OPERATOR

P. O. Box 3908, Odessa, Texas 79760

4. LOCATION OF WELL (Report location clearly and in accordance with any State requirements.)

At surface

At proposed prod. zone 1777'/SL, 980'/EL

14. DISTANCE IN MILES AND DIRECTION FROM NEAREST TOWN OR POST OFFICE*

20 miles North of Cuba, New Mexico

15. DISTANCE FROM PROPOSED*

LOCATION TO NEAREST
PROPERTY OR LEASE LINE, FT.
(Also to nearest drlg. unit line, if any)

980'

16. NO. OF ACRES IN LEASE

1280

17. NO. OF ACRES ASSIGNED

TO THIS WELL 320

18. DISTANCE FROM PROPOSED LOCATION*
TO NEAREST WELL, DRILLING, COMPLETED,
OR APPLIED FOR, ON THIS LEASE, FT.

177'

19. PROPOSED DEPTH

7800'

20. ROTARY OR CABLE TOOLS

Rotary

21. ELEVATIONS (Show whether DF, RT, GR, etc.)

GR 7378'

22. APPROX. DATE WORK WILL START*

October 8, 1975

23.

PROPOSED CASING AND CEMENTING PROGRAM

SIZE OF HOLE	SIZE OF CASING	WEIGHT PER FOOT	SETTING DEPTH	QUANTITY OF CEMENT
12-1/4"	8-5/8"	24.0#	300'	200 sxs. Circulated to Surface
7-7/8"	4-1/2"	10.5 - 11.6	TD	600 - 150

It is intended to drill this well to a depth sufficient to penetrate the Dakota formation using rotary tools and a fresh water gel-chemical mud as a circulating media. Electric logs will be run to TD and, if a completion is attempted, casing will be run to total depth and cement circulated above the Gallup formation on the first stage. The Pictured Cliffs formation will be covered with cement on second stage cementing. Productive formations will be perforated and sand water fractured.

5/USGS, 1/Enterprise Gas Company, 1/JRM, 1/WWB, 1/JBowman, 1/JJS, 1/WFile

IN ABOVE SPACE DESCRIBE PROPOSED PROGRAM: If proposal is to deepen or plug back, give data on present productive zone and proposed new productive zone. If proposal is to drill or deepen directionally, give pertinent data on subsurface locations and measured and true vertical depths. Give blowout preventer program, if any.

24. Original Signed By:

SIGNED John J. StrojekTITLE Manager - Production Dept DATE 8/29/75

(This space for Federal or State office use)

PERMIT NO. _____

APPROVAL DATE _____

APPROVED BY _____

TITLE _____

DATE _____

CONDITIONS OF APPROVAL, IF ANY:

Okal

*See Instructions On Reverse Side

**NEW MEXICO OIL CONSERVATION COMMISSION
WELL LOCATION AND ACREAGE DEDICATION PLAT**

Form C-122
Supersedes C-128
Effective 1-1-65

All distances must be from the outer boundaries of the Section.

Operator ODESSA NATURAL CORPORATION			Lease CHACON JICARILLA		Well No. 2
Unit Letter I	Section 16	Township 23 NORTH	Range 3 WEST	County RIO ARriba	

Actual Footage Location of Well:
1777 feet from the **SOUTH** line and **980** feet from the **EAST** line

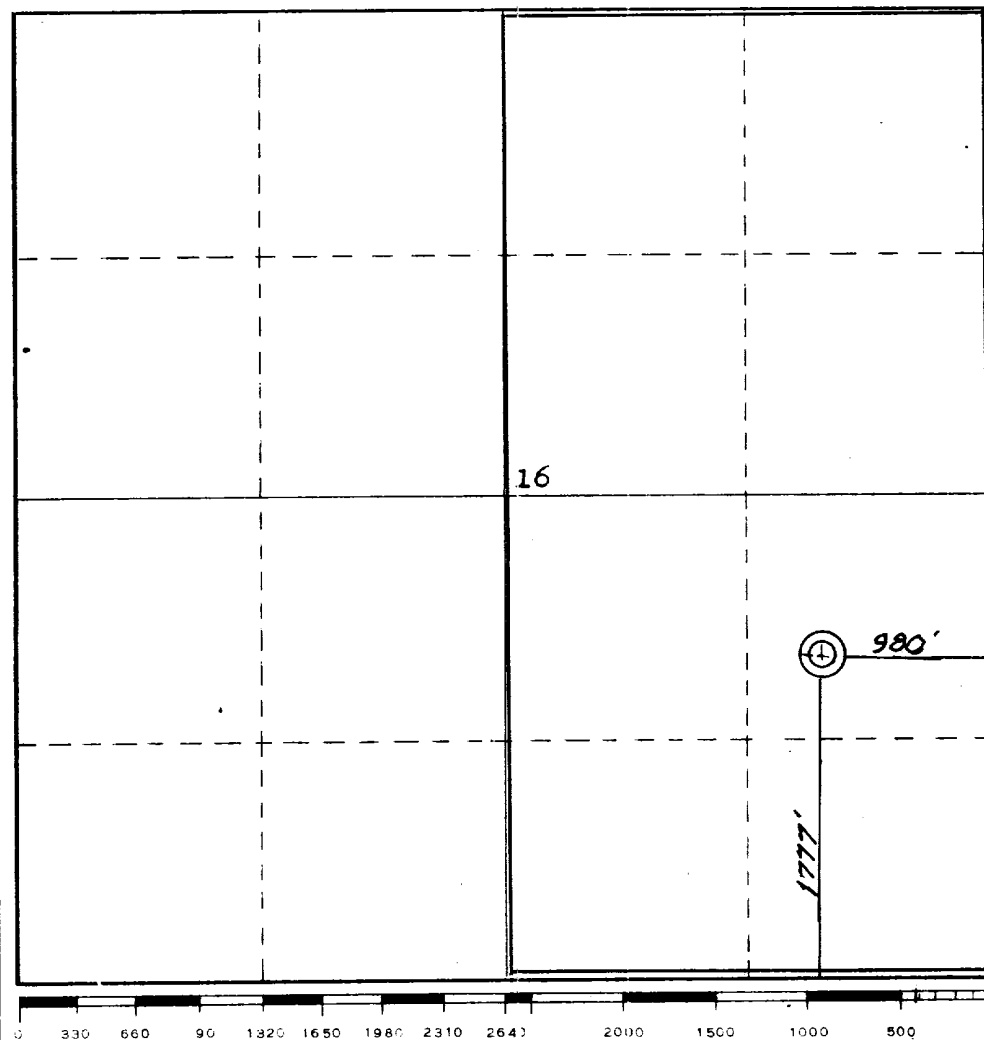
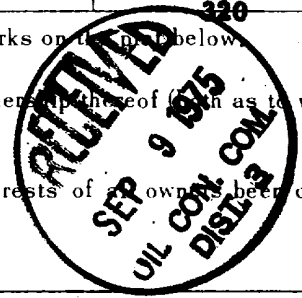
Ground Level Elev. 7378	Producing Formation DAKOTA	Pool Basin	Dedicated Acreage: 320 Acres
-----------------------------------	--------------------------------------	----------------------	--

- Outline the acreage dedicated to the subject well by colored pencil or hatchure marks on the plat below.
- If more than one lease is dedicated to the well, outline each and identify the ownership thereof (such as to working interest and royalty).
- If more than one lease of different ownership is dedicated to the well, have the interests of the owners been consolidated by communitization, unitization, force-pooling, etc?

☐ Yes ☐ No If answer is "yes," type of consolidation _____

If answer is "no," list the owners and tract descriptions which have actually been consolidated. (Use reverse side of this form if necessary.) _____

No allowable will be assigned to the well until all interests have been consolidated (by communitization, unitization, forced-pooling, or otherwise) or until a non-standard unit, eliminating such interests, has been approved by the Commission.



CERTIFICATION

I hereby certify that the information contained herein is true and complete to the best of my knowledge and belief.

Original Signed By:
John J. Strojek

Name	JOHN J. STROJEK/so
Position	ODESSA NATURAL CORPORATION Manager, Production Dept.
Company	
Date	August 29, 1975

I hereby certify that the information shown on this plat was plotted from field notes of actual surveys made by me under my supervision, and the same is true and correct to the best of my knowledge and belief.

Date Surveyed	14 August 1975
Registered Professional Engineer and/or Land Surveyor	James P. Leese
Certificate No.	1463

FIVE LAKES CANYON NW QUADRANGLE

NEW MEXICO

7.5 MINUTE SERIES (TOPOGRAPHIC)

4000 100' 100'

