

UNITED STATES
DEPARTMENT OF THE INTERIOR
GEOLOGICAL SURVEY

APPLICATION FOR PERMIT TO DRILL, DEEPEN, OR PLUG BACK

1a. TYPE OF WORK
DRILL ☒ DEEPEN ☐ PLUG BACK ☐b. TYPE OF WELL
OIL WELL ☐ GAS WELL ☒ OTHER ☐ SINGLE ZONE ☐ MULTIPLE ZONE ☒2. NAME OF OPERATOR
Amerada Hess Corporation, Attn: Drilling Services3. ADDRESS OF OPERATOR
P. O. Box 2040, Tulsa, Oklahoma 741024. LOCATION OF WELL (Report location clearly and in accordance with any State requirements.)
At surface

1,650' FEL & 990' FSL

At proposed prod. zone
Same as above14. DISTANCE IN MILES AND DIRECTION FROM NEAREST TOWN OR POST OFFICE*
Est. 7 Miles SW of Lindrith, New Mexico15. DISTANCE FROM PROPOSED*
LOCATION TO NEAREST
PROPERTY OR LEASE LINE, FT.
(Also to nearest drlg. unit line, if any) NA-16. NO. OF ACRES IN LEASE
2217.7'18. DISTANCE FROM PROPOSED LOCATION*
TO NEAREST WELL, DRILLING COMPLETED,
OR APPLIED FOR, ON THIS LEASE, FT. NA-19. PROPOSED DEPTH
7,800'21. ELEVATIONS (Show whether DF, RT, GR, etc.)
Gr. 7,364'17. NO. OF ACRES ASSIGNED
TO THIS WELL
B Dakota 320', Pictured Cliff 160'20. ROTARY OR CABLE TOOLS
Rotary22. APPROX. DATE WORK WILL START*
May 1, 1976

23. PROPOSED CASING AND CEMENTING PROGRAM

SIZE OF HOLE	SIZE OF CASING	WEIGHT PER FOOT	SETTING DEPTH	QUANTITY OF CEMENT
12-1/4"	9-5/8"	32.5#	350 +/-	250 sx. & circ.
8-3/4 & 7-7/8"	5-1/2"	15.5#	7,800'	750 sx. (est. top at surf.)

Plan to drill a 12-1/4" hole from surface to 350', set and cement 9-5/8" new casing at 350' with 250sx. cement (Circ. cement), WOC and drill an 8-3/4" hole to the Mancos shale and an 7-7/8" hole to proposed TD of 7,800' or a sufficient depth to test the Dakota gas sand, log well and if productive, complete as a dual gas well with 5-1/2" OD, 15.5# new casing and cement at 7,800' +/- with 750sx. cement.
No cores or drill stem tests are anticipated.
Mud program is to use low viscosity and low water loss mud from under surface casing to TD w/viscosity 60-70 for logging.

Attachments: Blowout equipment program, 12 point surface usage plan, location maps, plats and drilling rig layout plan.

Not dedicated
IN ABOVE SPACE DESCRIBE PROPOSED PROGRAM: If proposal is to deepen or plug back, give data on present productive zone and proposed new productive zone. If proposal is to drill or deepen directionally, give pertinent data on subsurface locations and measured and true vertical depths. Give blowout preventer program, if any.

24.

SIGNED [Signature] TITLE Acting Supv Tech/Drlg Adm. Serv. DATE April 26, 1976

(This space for Federal or State office use)

PERMIT NO. _____ APPROVAL DATE _____

APPROVED BY _____
CONDITIONS OF APPROVAL, IF ANY:

TITLE _____

RECEIVED

APR 29 1976

U. S. GEOLOGICAL SURVEY
DURHAM, N.C.

NEW MEXICO OIL CONSERVATION COMMISSION
WELL LOCATION AND ACREAGE DEDICATION PLAT

Form C-102
Supersedes C-128
Effective 1-1-65

All distances must be from the outer boundaries of the Section.

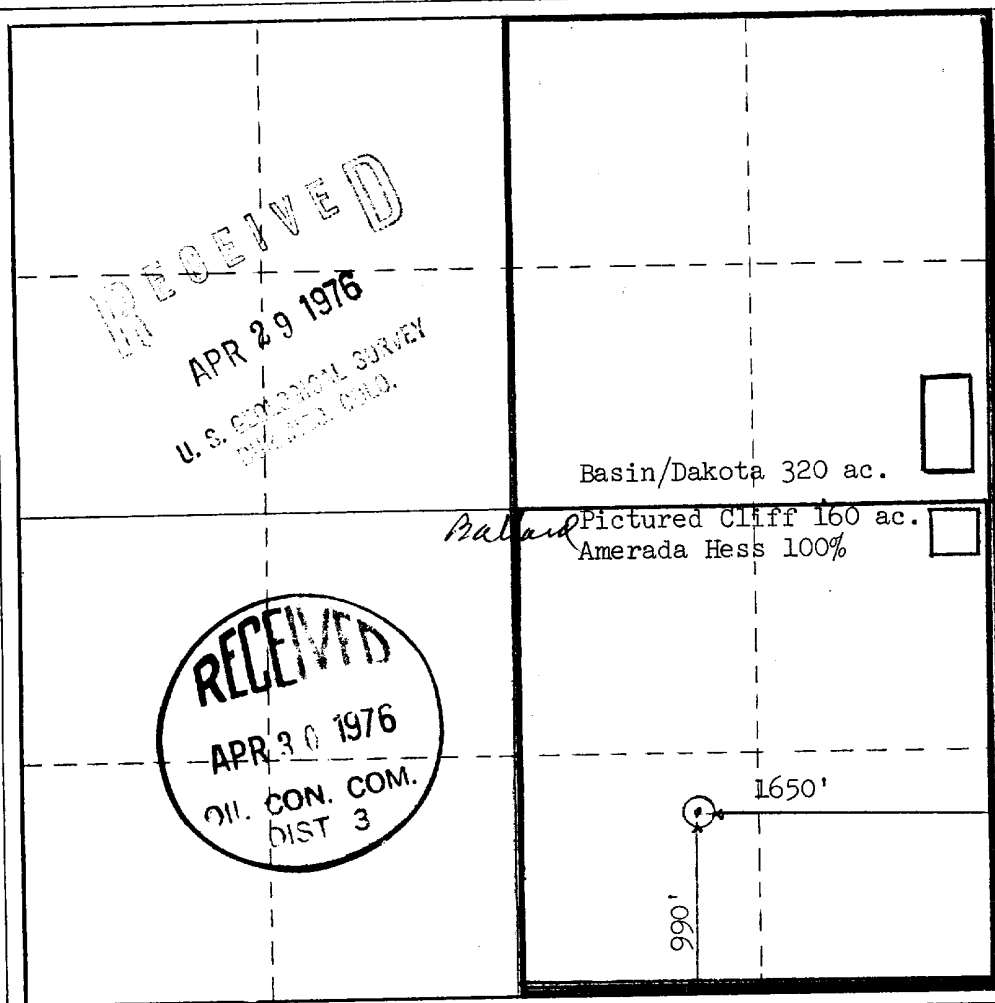
Operator Amerada Hess Corporation			Lease Jicarilla Apache I		Well No. 3
Unit Letter 0	Section 14	Township 23N	Range 3W	County Rio Arriba	
Actual Footage Location of Well 990 feet from the South line and 1,650 feet from the East line					
Ground Level Elev. 7,364'	Producing Formation Dakota		Pool Basin/Dakota & Pictured Cliff		Dedicated Acreage: 5/320 & 160 Acres

1. Outline the acreage dedicated to the subject well by colored pencil or hatchure marks on the plat below. *ce*
2. If more than one lease is dedicated to the well, outline each and identify the ownership thereof (both as to working interest and royalty).
3. If more than one lease of different ownership is dedicated to the well, have the interests of all owners been consolidated by communitization, unitization, force-pooling, etc?

☐ Yes ☐ No If answer is "yes," type of consolidation NA-

If answer is "no," list the owners and tract descriptions which have actually been consolidated. (Use reverse side of this form if necessary.) NA-

No allowable will be assigned to the well until all interests have been consolidated (by communitization, unitization, forced-pooling, or otherwise) or until a non-standard unit, eliminating such interests, has been approved by the Commission.



CERTIFICATION

I hereby certify that the information contained herein is true and complete to the best of my knowledge and belief.

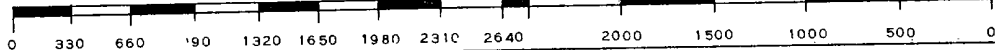
J. R. Wilson
Name
J. R. Wilson
Position
Acting Supv. Tech/drlg Adm. Serv.
Company
Amerada Hess Corporation
Date
April 26, 1976

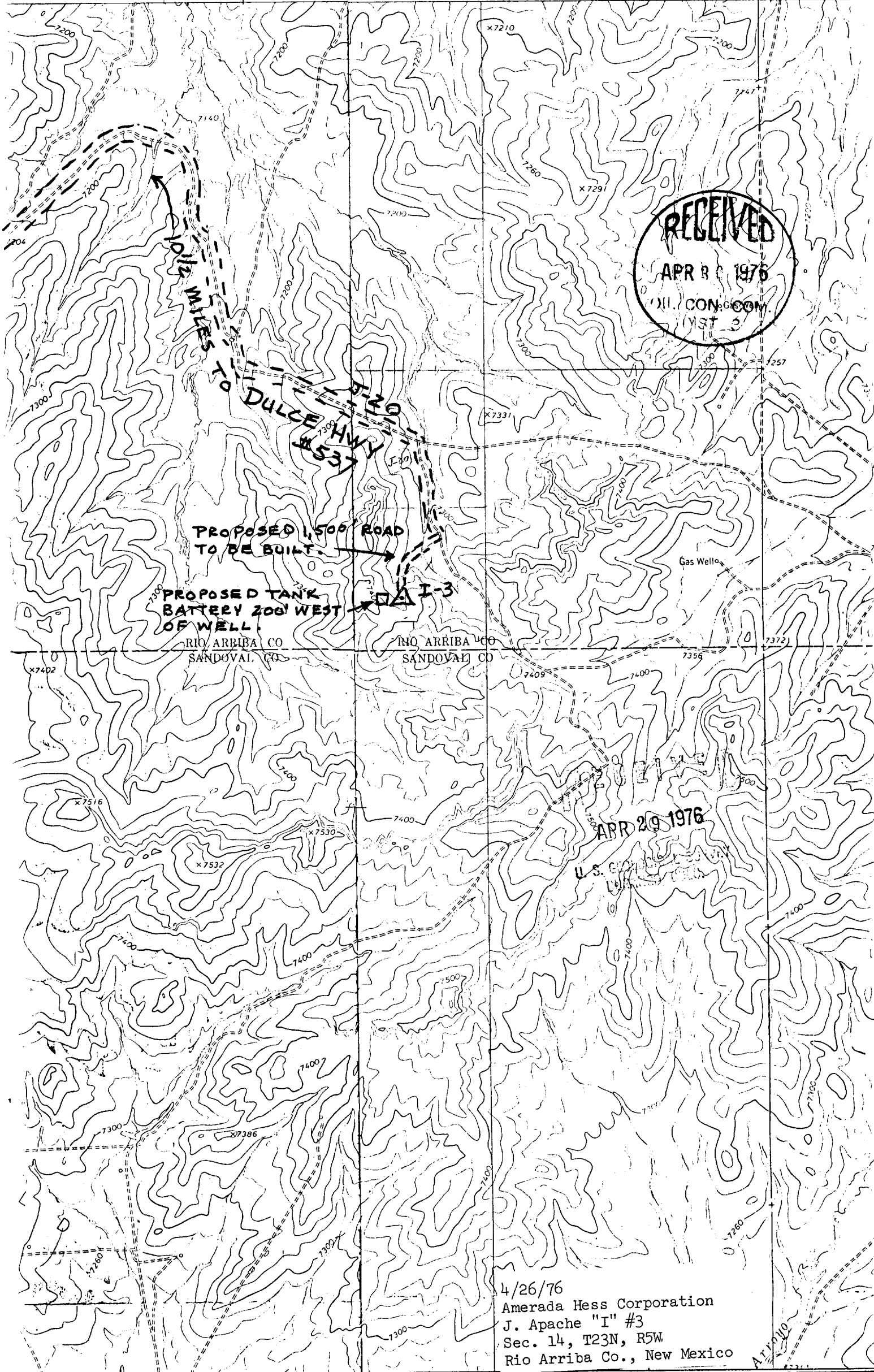
I hereby certify that the well location shown on this plat was plotted from field notes of actual surveys made by me or under my supervision, and that the same is true and correct to the best of my knowledge and belief.

Date Surveyed

Registered Professional Engineer and/or Land Surveyor

Certificate No.





4/26/76
 Amerada Hess Corporation
 J. Apache "I" #3
 Sec. 14, T23N, R5W
 Rio Arriba Co., New Mexico