

UNITED STATES  
DEPARTMENT OF THE INTERIOR  
GEOLOGICAL SURVEY

30-039-21305

APPLICATION FOR PERMIT TO DRILL, DEEPEN, OR PLUG BACK

1a. TYPE OF WORK

DRILL ☒

DEEPEN ☐

PLUG BACK ☐

b. TYPE OF WELL

OIL  
WELL ☒

GAS  
WELL ☐

OTHER

SINGLE  
ZONE ☒

MULTIPLE  
ZONE ☐

2. NAME OF OPERATOR

Mobil Oil Corporation

3. ADDRESS OF OPERATOR

3 Greenway Plaza East, Suite 800, Houston, Texas 77046

4. LOCATION OF WELL (Report location clearly and in accordance with any State requirements.)\*

At surface

1948' FSL & 2077' FWL Sec. 13, T23N R3W

At proposed prod. zone

Same as Surface

14. DISTANCE IN MILES AND DIRECTION FROM NEAREST TOWN OR POST OFFICE\*

5. LEASE DESIGNATION AND SERIAL NO.

6. IF INDIAN, ALLOTTEE OR TRIBE NAME

Jicarilla Contract #168

7. UNIT AGREEMENT NAME

8. FARM OR LEASE NAME

Jicarilla M

9. WELL NO.

3

10. FIELD AND POOL, OR WILDCAT

Chacon-Dakota *ext*

11. SEC., T., R., M., OR BLK.  
AND SURVEY OR AREA

Sec. 13, T23N, R3W

12. COUNTY OR PARISH

Rio Arriba

13. STATE

New Mexico

15. DISTANCE FROM PROPOSED\*

LOCATION TO NEAREST

PROPERTY OR LEASE LINE, FT.

(Also to nearest drlg. unit line, if any)

2077' to  
leaseline

16. NO. OF ACRES IN LEASE

1920

17. NO. OF ACRES ASSIGNED

TO THIS WELL

80

18. DISTANCE FROM PROPOSED LOCATION\*

TO NEAREST WELL, DRILLING, COMPLETED,  
OR APPLIED FOR, ON THIS LEASE, FT.

1781'

19. PROPOSED DEPTH

8000

20. ROTARY OR CABLE TOOLS

Rotary

21. ELEVATIONS (Show whether DF, RT, GR, etc.)

7443' - Ground

22. APPROX. DATE WORK WILL START\*

As soon as possible

23.

PROPOSED CASING AND CEMENTING PROGRAM

SIZE OF HOLE	SIZE OF CASING	WEIGHT PER FOOT	SETTING DEPTH	QUANTITY OF CEMENT
12-1/4"	8-5/8"	20# Misco	0-300	See attached cementing schedule
7-7/8"	5-1/2"	15.5# K-55	0-8000	

MUD PROGRAM

Depth	Type of Mud	Weight	Viscosity	PH	Water Loss
0-300'	Spud Mud	9.0			
300-8000'	Fresh Water Gel				

BLOWOUT PREVENTER PROGRAM

See Attached Diagrams

IN ABOVE SPACE DESCRIBE PROPOSED PROGRAM: If proposal is to deepen or plug back, give data on present productive zone and proposed new productive zone. If proposal is to drill or deepen directionally, give pertinent data on subsurface locations and measured and true vertical depths. Give blowout preventer program, if any.

24.

SIGNED

*A. D. Bond*

A. D. Bond

TITLE

Regulatory

Engineering Coordinator

DATE

11-23-76

(This space for Federal or State office use)

PERMIT NO.

APPROVAL DATE

APPROVED BY

TITLE

DATE

CONDITIONS OF APPROVAL, IF ANY:

*alkal*

\*See Instructions On Reverse Side



# WELL LOCATION AND ACREAGE DEDICATION PLAT

Supersedes C-128  
Effective 1-1-65

All distances must be from the outer boundaries of the Section.

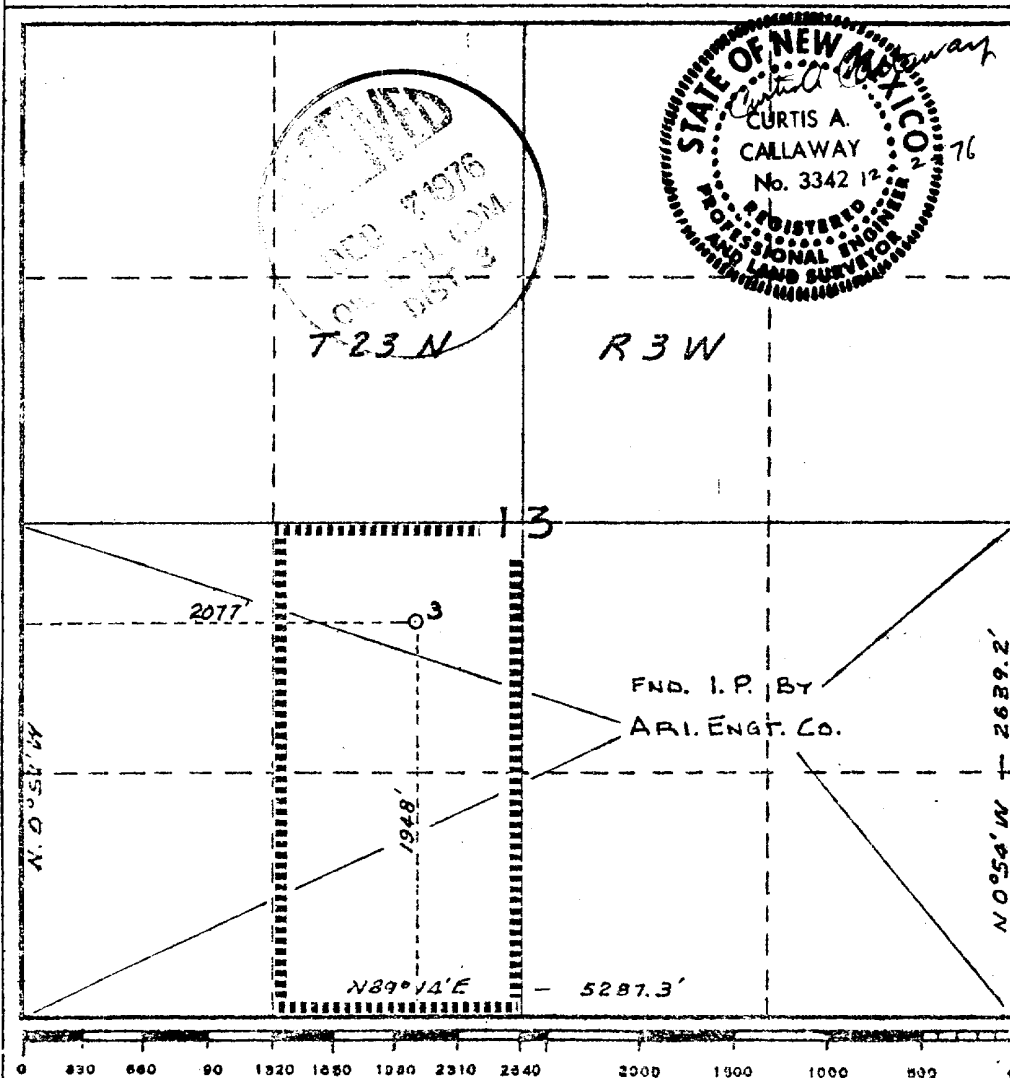
Operator <b>Mobil Oil Corporation</b>			Lease <b>Jicarilla "M"</b>		Well No. <b>3</b>
Unit Letter <b>K</b>	Section <b>13</b>	Township <b>23N</b>	Range <b>3W</b>	County <b>Rio Arriba</b>	
Actual Footage Location of Well:					
<b>1948'</b>		feet from the <b>South</b>	line and	<b>2077'</b>	feet from the <b>West</b>
Ground Level Elev. <b>7443</b>	Producing Formation <b>Dakota</b>		Pool <b>Chacon-Dakota</b>	Dedicated Acreage: <b>80</b> Acres	

1. Outline the acreage dedicated to the subject well by colored pencil or hachure marks on the plat below.
2. If more than one lease is dedicated to the well, outline each and identify the ownership thereof (both as to working interest and royalty).
3. If more than one lease of different ownership is dedicated to the well, have the interests of all owners been consolidated by communitization, unitization, force-pooling, etc?

☐ Yes ☐ No If answer is "yes," type of consolidation \_\_\_\_\_

If answer is "no," list the owners and tract descriptions which have actually been consolidated. (Use reverse side of this form if necessary.) \_\_\_\_\_

No allowable will be assigned to the well until all interests have been consolidated (by communitization, unitization, forced-pooling, or otherwise) or until a non-standard unit, eliminating such interests, has been approved by the Commission.



## CERTIFICATION

I hereby certify that the information contained herein is true and complete to the best of my knowledge and belief.

*A. D. Bond*

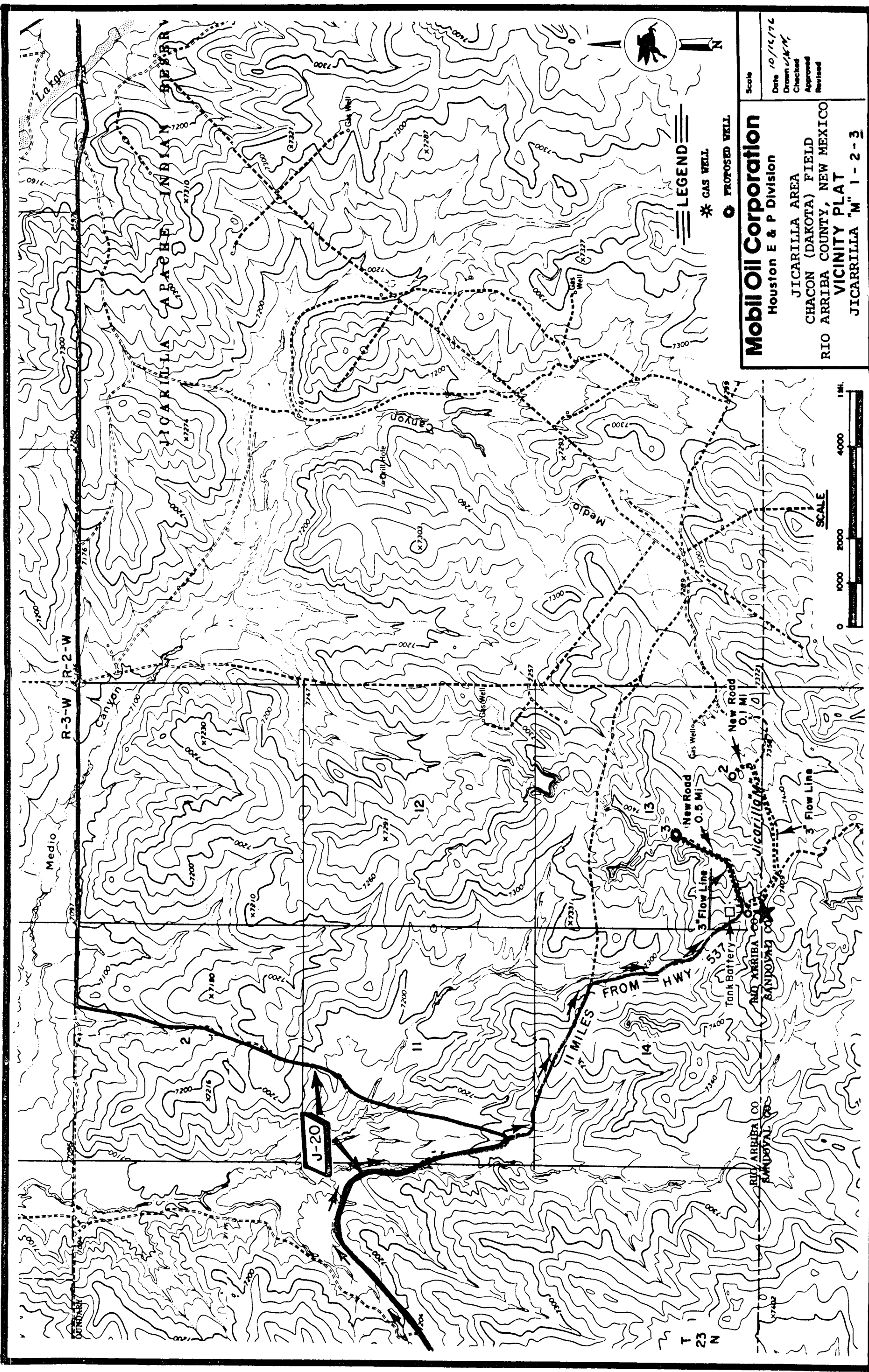
Name  
**A. D. Bond**  
Position **Regulatory Engineering Coordinator**  
Company  
**Mobil Oil Corporation**  
Date  
**11-23-76**

I hereby certify that the well location shown on this plat was plotted from field notes of actual surveys made by me or under my supervision, and that the same is true and correct to the best of my knowledge and belief.

*Curtis A. Callaway*

Date Surveyed  
**October 14, 1976**  
Registered Professional Engineer and/or Land Surveyor

**Curtis A. Callaway**  
Certificate No.  
**3342**



**LEGEND**  
\* GAS WELL  
o PROPOSED WELL

**Mobil Oil Corporation**  
Houston E & P Division  
JICARILLA AREA  
CHACON (DAKOTA) FIELD  
RIO ARriba COUNTY, NEW MEXICO  
VICINITY PLAT  
JICARILLA "M" 1-2-3

Scale  
Date 10/16/76  
Drawn J.K.M.  
Checked  
Approved  
Revised

