

UNITED STATES
DEPARTMENT OF THE INTERIOR

GEOLOGICAL SURVEY

APPLICATION FOR PERMIT TO DRILL, DEEPEN, OR PLUG BACK

1a. TYPE OF WORK

DRILL ☒DEEPEN ☐PLUG BACK ☐

b. TYPE OF WELL

OIL
WELL ☒GAS
WELL ☐OTHER ☐SINGLE
ZONE ☒MULTIPLE
ZONE ☐

2. NAME OF OPERATOR

Mobil Oil Corporation

3. ADDRESS OF OPERATOR

3 Greenway Plaza East, Suite 800, Houston, Texas 77046

4. LOCATION OF WELL (Report location clearly and in accordance with any State requirements.)*

At surface

660' FSL & 1980' FEL Sec. 13, T23N, R3W

At proposed prod. zone

Same as Surface

14. DISTANCE IN MILES AND DIRECTION FROM NEAREST TOWN OR POST OFFICE*

15. DISTANCE FROM PROPOSED*

LOCATION TO NEAREST

PROPERTY OR LEASE LINE, FT.

(Also to nearest drlg. unit line, if any)

1980' to
leaseline

18. DISTANCE FROM PROPOSED LOCATION*

TO NEAREST WELL, DRILLING, COMPLETED,
OR APPLIED FOR, ON THIS LEASE, FT.

1781

16. NO. OF ACRES IN LEASE

1920

19. PROPOSED DEPTH

8000

17. NO. OF ACRES ASSIGNED
TO THIS WELL

80

20. ROTARY OR CABLE TOOLS

Rotary

21. ELEVATIONS (Show whether DF, RT, CR, etc.)

7371' - Ground

22. APPROX. DATE WORK WILL START*

As soon as possible

23.

PROPOSED CASING AND CEMENTING PROGRAM

SIZE OF HOLE	SIZE OF CASING	WEIGHT PER FOOT	SETTING DEPTH	QUANTITY OF CEMENT
12 1/2"	8-5/8"	20# Misco	0-300	See attached cementing schedule
7-7/8"	5-1/2"	15.5# K-55	0-8000	

MUD PROGRAM

Depth	Type of Mud	Weight	Viscosity	PH	Water Loss
0-300'	Spud Mud				
300-8000'	Fresh Water Gel	9.0			

BLOWOUT PREVENTER PROGRAM

See Attached Diagrams



IN ABOVE SPACE DESCRIBE PROPOSED PROGRAM: If proposal is to deepen or plug back, give data on present productive zone and proposed new productive zone. If proposal is to drill or deepen directionally, give pertinent data on subsurface locations and measured and true vertical depths. Give blowout preventer program, if any.

24.

SIGNED

A. D. Bond

TITLE

Regulatory

Engineering Coordinator

DATE

11-23-76

(This space for Federal or State office use)

PERMIT NO.

APPROVAL DATE

APPROVED BY

TITLE

DATE

CONDITIONS OF APPROVAL, IF ANY:

*See Instructions On Reverse Side

WELL LOCATION AND ACREAGE DEDICATION PLAT

Form C-102
Supersedes C-128
Effective 1-1-65

All distances must be from the outer boundaries of the Section.

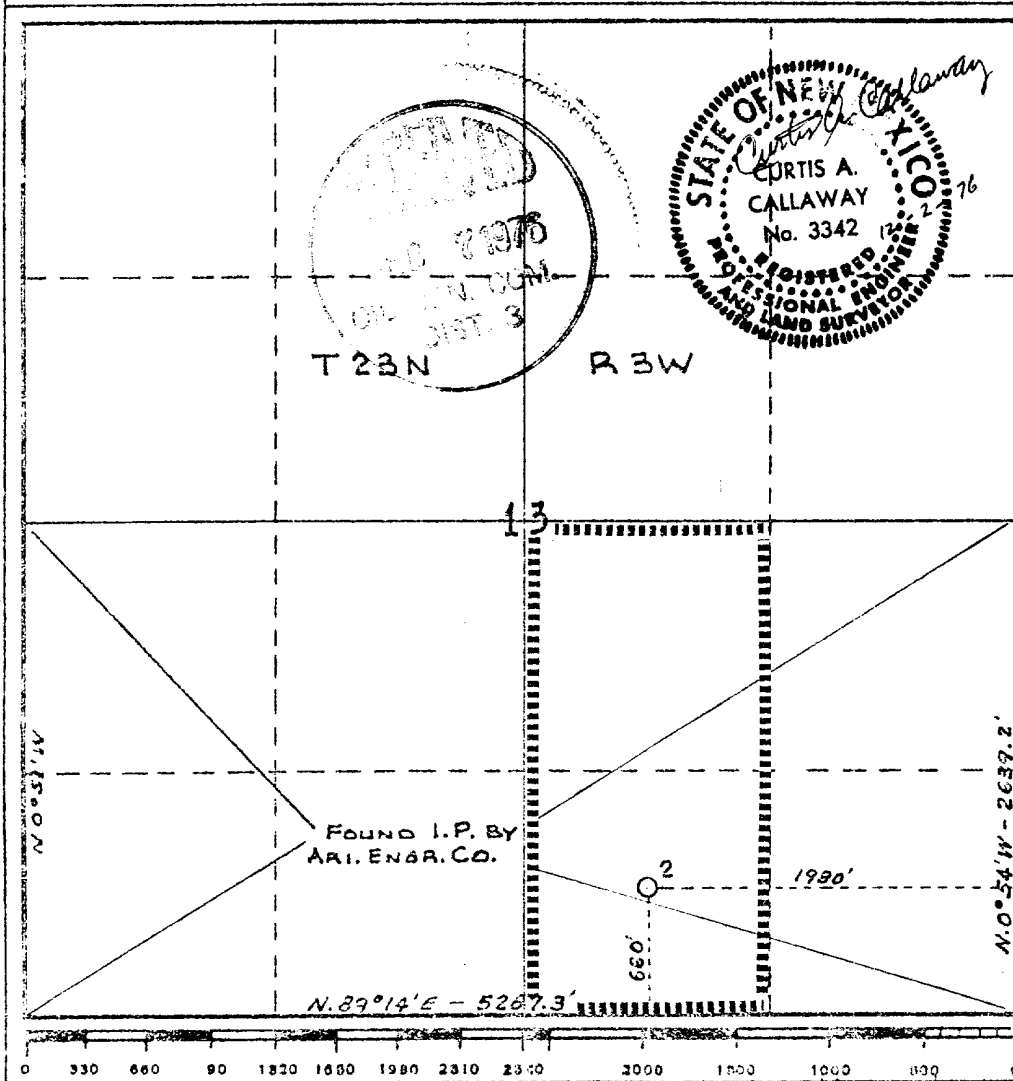
Operator Mobil Oil Corporation			Lease Jicarilla "M"		Well No. 2
Unit Letter 0	Section 13	Township 23N	Range 3W	County Rio Arriba	
Actual Postage Location of Well: 660' feet from the South line and 1980 feet from the East line					
Ground Level elev. 7371'	Producing Formation Dakota		Pool Chacon-Dakota <i>ext</i>		Dedicated Acreage: 80 Acres

1. Outline the acreage dedicated to the subject well by colored pencil or hatchure marks on the plat below.
2. If more than one lease is dedicated to the well, outline each and identify the ownership thereof (both as to working interest and royalty).
3. If more than one lease of different ownership is dedicated to the well, have the interests of all owners been consolidated by communitization, unitization, force-pooling, etc?

☐ Yes ☐ No If answer is "yes," type of consolidation _____

If answer is "no," list the owners and tract descriptions which have actually been consolidated. (Use reverse side of this form if necessary.) _____

No allowable will be assigned to the well until all interests have been consolidated (by communitization, unitization, forced-pooling, or otherwise) or until a non-standard unit, eliminating such interests, has been approved by the Commission.



CERTIFICATION

I hereby certify that the information contained herein is true and complete to the best of my knowledge and belief.

A. D. Bond

Name

A. D. Bond

Position **Regulatory Engineering Coordinator**

Company

Mobil Oil Corporation

Date

11-23-76

I hereby certify that the well location shown on this plat was plotted from field notes of actual surveys made by me or under my supervision, and that the same is true and correct to the best of my knowledge and belief.

Curtis A. Callaway

Date Surveyed

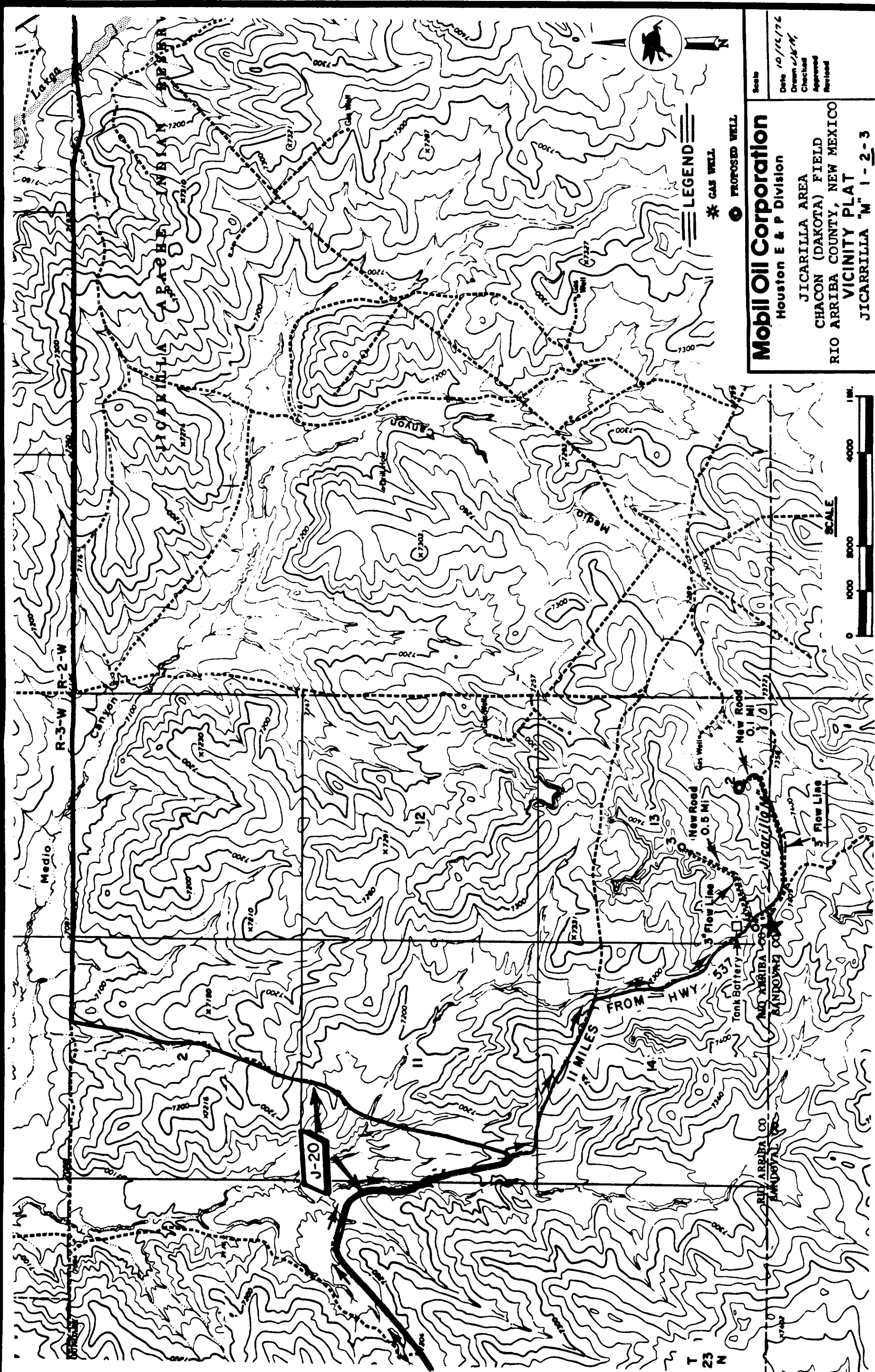
October 14, 1976

Registered Professional Engineer and/or Land Surveyor

Curtis A. Callaway

Certificate No.

3342



Mobil Oil Corporation
Houston E & P Division

JICARILLA AREA
CHACON (DAKOTA) FIELD
RIO ARriba COUNTY, NEW MEXICO
VICINITY PLAT
JICARILLA "N" 1-2-3

Scale
Date 10/16/76
Drawn J/M/M
Checked
Approved
Revised