

UNITED STATES
DEPARTMENT OF THE INTERIOR
GEOLOGICAL SURVEY

30-039-21426

APPLICATION FOR PERMIT TO DRILL, DEEPEN, OR PLUG BACK

1a. TYPE OF WORK

DRILL ☒DEEPEN ☐PLUG BACK ☐

b. TYPE OF WELL

OIL
WELL ☒GAS
WELL ☐

OTHER

SINGLE
ZONE ☒MULTIPLE
ZONE ☐

2. NAME OF OPERATOR

ODESSA NATURAL CORPORATION

3. ADDRESS OF OPERATOR

P. O. Box 3908, Odessa, Texas 79760

4. LOCATION OF WELL (Report location clearly and in accordance with any State requirements.)*

At surface

990 720' FSL, 800' FEL

At proposed prod. zone

Same

Study Attached

14. DISTANCE IN MILES AND DIRECTION FROM NEAREST TOWN OR POST OFFICE*

Not applicable

15. DISTANCE FROM PROPOSED*

LOCATION TO NEAREST
PROPERTY OR LEASE LINE, FT.
(Also to nearest drlg. unit line, if any)

790'

16. NO. OF ACRES IN LEASE

1920

18. DISTANCE FROM PROPOSED LOCATION*

TO NEAREST WELL, DRILLING, COMPLETED,
OR APPLIED FOR, ON THIS LEASE, FT.No other
well.

19. PROPOSED DEPTH

7600'

17. NO. OF ACRES ASSIGNED
TO THIS WELL

80 Ac. 5/311.36

20. ROTARY OR CABLE TOOLS

Rotary

21. ELEVATIONS (Show whether DF, RT, GR, etc.)

7291'

22. APPROX. DATE WORK WILL START*

6-1-77

23.

PROPOSED CASING AND CEMENTING PROGRAM

SIZE OF HOLE	SIZE OF CASING	WEIGHT PER FOOT	SETTING DEPTH	QUANTITY OF CEMENT
12-1/4"	8-5/8"	24.0	250'	250 sacks
7-7/8"	4-1/2"	10.50 & 11.60	7600'	To be determined

It is proposed to drill this well with rotary tools, using oil base mud as circulation medium, through the Dakota Formation. Possible productive zones in the Dakota Formation will be completed. Production casing will be cemented in such a manner as to protect the Pictured Cliffs formation.

Estimated Formation Tops

Pictured Cliffs	3130'	Greenhorn	7220'
Cliff House	4700	Graneros	7280
Gallup	6240	Dakota	7300

The ~~S 1/2 SE 1/4~~ Section 4 is dedicated to this well.

Gas is dedicated

IN ABOVE SPACE DESCRIBE PROPOSED PROGRAM: If proposal is to deepen or plug back, give data on present productive zone and proposed new productive zone. If proposal is to drill or deepen directionally, give pertinent data on subsurface locations and measured and true vertical depths. Give blowout preventer program, if any.

24. FOR: Odessa Natural Corporation

President, Walsh Engineering
& Production Corp.

SIGNED

Ewell N. Walsh, P. E.

TITLE

DATE

June 1, 1977

(This space for Federal or State office use)

PERMIT NO.

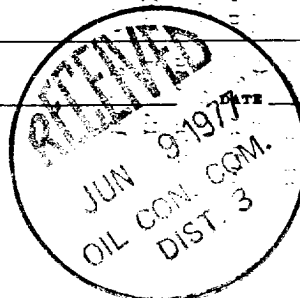
APPROVAL DATE

APPROVED BY

TITLE

CONDITIONS OF APPROVAL, IF ANY:

*See Instructions On Reverse Side



**NEW MEXICO OIL CONSERVATION COMMISSION
WELL LOCATION AND ACREAGE DEDICATION PLAT**

Form C-102
Supersedes C-128
Effective 1-1-65

All distances must be from the outer boundaries of the Section.

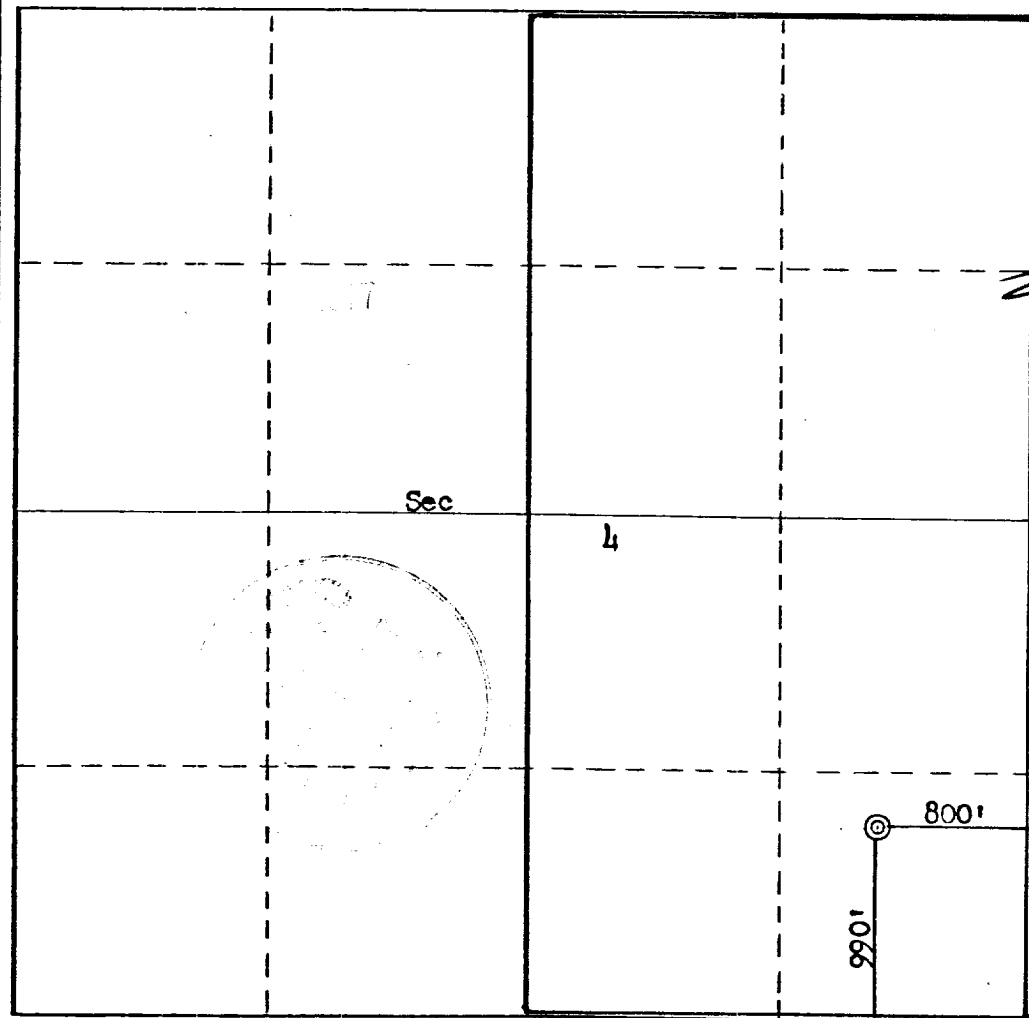
Operator Odessa Natural Corporation			Lease Jicarilla Joint Ventures "KD" Lease		Well No. 1
Unit Letter P	Section 4	Township 23N	Range 3W	County Rio Arriba	
Actual Footage Location of Well: 990 feet from the South line and 800 feet from the East line					
Ground Level Elev. 7296	Producing Formation Dakota		Pool Chacon Dakota Associated Pool <i>ext</i>		Dedicated Acreage: 220 220.36 Acres

1. Outline the acreage dedicated to the subject well by colored pencil or hachure marks on the plat below.
2. If more than one lease is dedicated to the well, outline each and identify the ownership thereof (both as to working interest and royalty).
3. If more than one lease of different ownership is dedicated to the well, have the interests of all owners been consolidated by communitization, unitization, force-pooling, etc?

☐ Yes ☐ No If answer is "yes," type of consolidation _____

If answer is "no," list the owners and tract descriptions which have actually been consolidated. (Use reverse side of this form if necessary.) _____

No allowable will be assigned to the well until all interests have been consolidated (by communitization, unitization, forced-pooling, or otherwise) or until a non-standard unit, eliminating such interests, has been approved by the Commission.



CERTIFICATION

I hereby certify that the information contained herein is true and complete to the best of my knowledge and belief.

For: Odessa Natural Corp.

Name: *Ewell N. Walsh*

Position: **Ewell N. Walsh, P.E.
President,**

Company: **Walsh Engr. & Prod.
Corp.**

Date: **June 1, 1977**

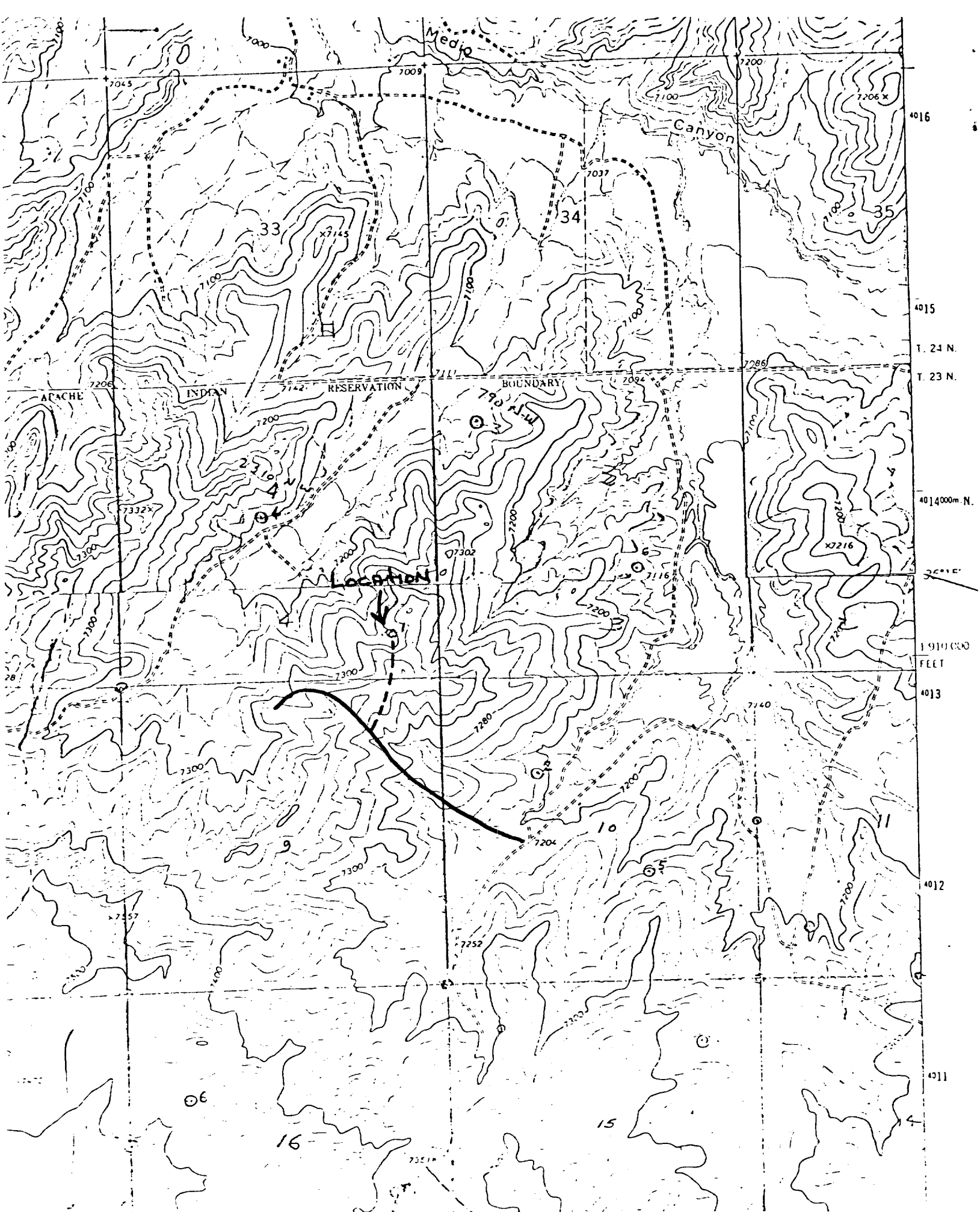
I hereby certify that the well location shown on this plat was plotted from field notes of actual surveys made by me or under my supervision, and that the same is true and correct to the best of my knowledge and belief.

Date Surveyed:
May 10, 1977

Registered Professional Engineer
and/or Land Surveyor

Fred B. Kerr Jr.
Fred B. Kerr Jr.

Certificate No.
3950



A Vicinity Map for
GPRSSA NATURAL CORP. 47. Hooville Joint Venture "KDW" Lease