

UNITED STATES
DEPARTMENT OF THE INTERIOR
GEOLOGICAL SURVEY

APPLICATION FOR PERMIT TO DRILL, DEEPEN, OR PLUG BACK

1a. TYPE OF WORK

DRILL ☒DEEPEN ☐PLUG BACK ☐

b. TYPE OF WELL

OIL
WELL ☒GAS
WELL ☐OTHER ☐SINGLE
ZONE ☒MULTIPLE
ZONE ☐

2. NAME OF OPERATOR

ODESSA NATURAL CORPORATION

3. ADDRESS OF OPERATOR

P. O. Box 3908, Odessa, Texas 79760

4. LOCATION OF WELL (Report location clearly and in accordance with any State requirements.)*

At surface

1650' FNL, 1650' FWL

At proposed prod. zone

Same

14. DISTANCE IN MILES AND DIRECTION FROM NEAREST TOWN OR POST OFFICE*

Not applicable

15. DISTANCE FROM PROPOSED*
LOCATION TO NEAREST
PROPERTY OR LEASE LINE, FT.

(Also to nearest drilg. unit line, if any)

1650'

16. NO. OF ACRES IN LEASE

1920

17. NO. OF ACRES ASSIGNED
TO THIS WELL

160 Ac.

18. DISTANCE FROM PROPOSED LOCATION*
TO NEAREST WELL, DRILLING, COMPLETED,
OR APPLIED FOR, ON THIS LEASE, FT.

2300'

19. PROPOSED DEPTH

7510'

20. ROTARY OR CABLE TOOLS

Rotary

21. ELEVATIONS (Show whether DF, RT, GR, etc.)

7204'GR, 7217'DF, 7218'KB

22. APPROX. DATE WORK WILL START*

7-20-77

23.

PROPOSED CASING AND CEMENTING PROGRAM

SIZE OF HOLE	SIZE OF CASING	WEIGHT PER FOOT	SETTING DEPTH	QUANTITY OF CEMENT
12-1/4"	8-5/8"	24.0	250'	250 sacks
7-7/8"	4-1/2"	10.50 & 11.60	7510'	To be determined.

It is proposed to drill this well with rotary tools, using oil base mud as circulation medium, through the Dakota Formation. Possible productive zones in the Dakota Formation will be completed. Production casing will be cemented in such a manner as to protect the Pictured Cliffs formation.

Estimated Formation Tops

Pictured Cliffs	3040'	Greenhorn	7130'
Cliff House	4610'	Graneros	7190'
Gallup	6150'	Dakota	7210'

The NW/4 Section 10 is dedicated to this well.

Natural Gas produced from this well is not committed.

IN ABOVE SPACE DESCRIBE PROPOSED PROGRAM: If proposal is to deepen or plug back, give data on present productive zone and proposed new productive zone. If proposal is to drill or deepen directionally, give pertinent data on subsurface locations and measured and true vertical depths. Give blowout preventer program, if any.

24. For: Odessa Natural Corporation

President, Walsh Engineering

Ewell N. Walsh, P. E.

TITLE & Production Corp.

DATE June 22, 1977

(This space for Federal or State office use)

PERMIT NO. _____

APPROVAL DATE _____

APPROVED BY _____

TITLE _____

DATE _____

CONDITIONS OF APPROVAL, IF ANY:

*See Instructions On Reverse Side

**NEW MEXICO OIL CONSERVATION COMMISSION
WELL LOCATION AND ACREAGE DEDICATION PLAT**

Form C-102
Supersedes C-128
Effective 1-1-65

All distances must be from the outer boundaries of the Section.

Operator Odessa Natural Corporation			Lease Jicarilla Joint Venture "KD" Lease		Well No. 2
Unit Letter F	Section 10	Township 23N	Range 3W	County Rio Arriba	
Actual Footage Location of Well: 1650 feet from the North line and 1650 feet from the West line					
Ground Level Elev. 7204	Producing Formation Dakota	Pool Chacon Dakota Associated Oil Pool ext		Dedicated Acreage 160 Acres	

1. Outline the acreage dedicated to the subject well by colored pencil or hachure marks on the plat below.
2. If more than one lease is dedicated to the well, outline each and identify the ownership thereof (both as to working interest and royalty).
3. If more than one lease of different ownership is dedicated to the well, have the interests of all owners been consolidated by communitization, unitization, force-pooling, etc?

☐ Yes ☐ No If answer is "yes," type of consolidation _____

If answer is "no," list the owners and tract descriptions which have actually been consolidated. (Use reverse side of this form if necessary.) _____

No allowable will be assigned to the well until all interests have been consolidated (by communitization, unitization, forced-pooling, or otherwise) or until a non-standard unit, eliminating such interests, has been approved by the Commission.

CERTIFICATION

I hereby certify that the information contained herein is true and complete to the best of my knowledge and belief.

For: **Odessa Natural Corp**

Name: *Ewell N. Walsh*
 Position: **Ewell N. Walsh, P.E.**
President

Company: **Walsh Engineering & Production Corp.**

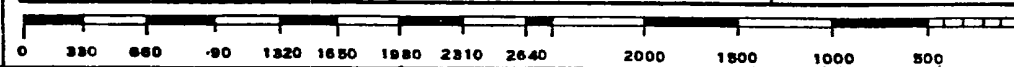
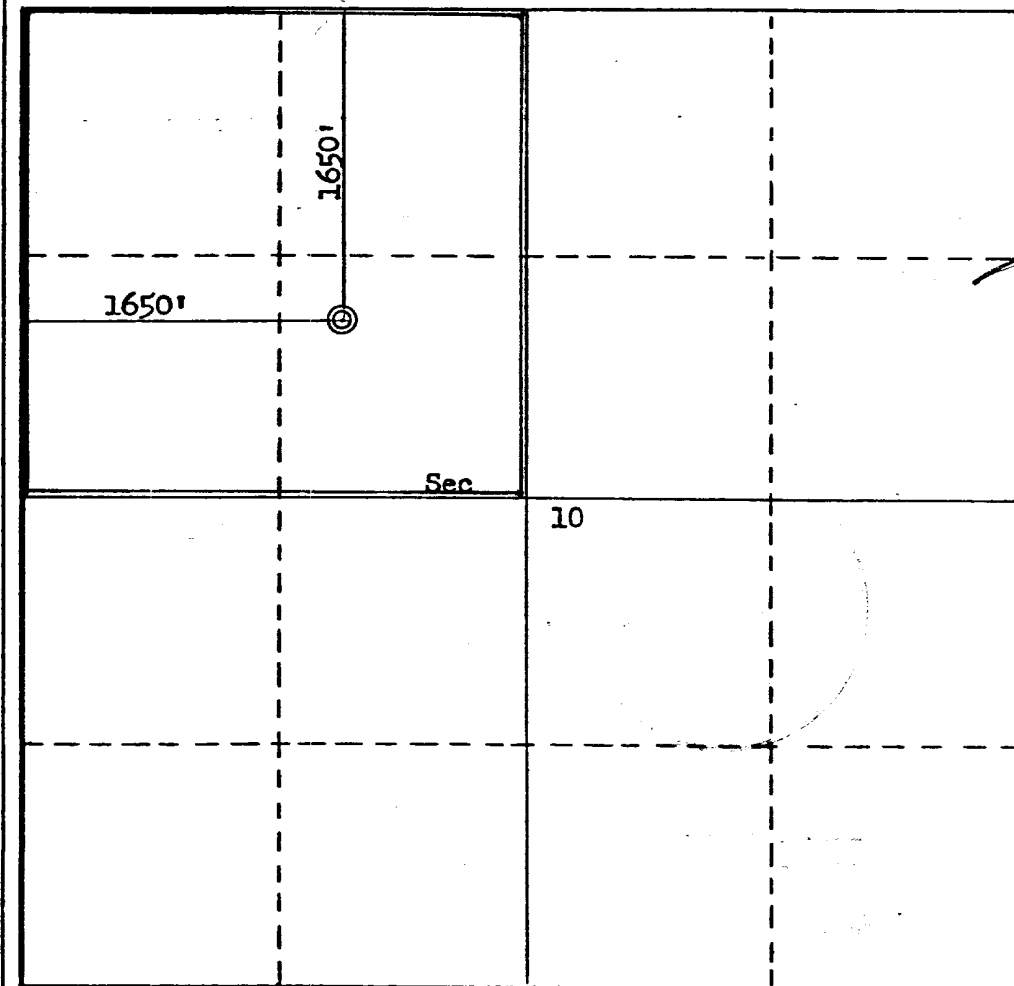
Date: **June 22, 1977**

I hereby certify that the well location shown on this plat was plotted from field notes of actual surveys made by me or under my supervision, and that the same is true and correct to the best of my knowledge and belief.

Date Surveyed: **March 29, 1977**
 Registered Professional Engineer and/or Land Surveyor

Fred B. Kerr Jr.
Fred B. Kerr Jr.

Certificate No. **3950**



A Vicinity Map for
ODESSA NATURAL CORP. #2 Jicarilla Joint Venture "KD" Lease