

UNITED STATES
DEPARTMENT OF THE INTERIOR
GEOLOGICAL SURVEY30-039-21457
5. LEASE DESIGNATION AND SERIAL NO.

APPLICATION FOR PERMIT TO DRILL, DEEPEN, OR PLUG BACK

6. IF INDIAN, ALLOTTEE OR TRIBE NAME
Jicarilla Apache

7. UNIT AGREEMENT NAME

8. FARM OR LEASE NAME
Jicarilla Joint
Venture "KD"

9. WELL NO.

4

10. FIELD AND POOL, OR WILDCAT

Chacon Dakota
Associated Oil Pool11. SEC., T., R., M., OR BLK.
AND SURVEY OR AREA

Sec. 4-T23N-R3W

N.M.P.M.

12. COUNTY OR PARISH

Rio Arriba

13. STATE

New Mex.

14. DISTANCE IN MILES AND DIRECTION FROM NEAREST TOWN OR POST OFFICE*

Not applicable

15. NO. OF ACRES IN LEASE

1920

16. NO. OF ACRES ASSIGNED
TO THIS WELL

160 AC. 150.72

17. ROTARY OR CABLE TOOLS

Rotary

21. APPROX. DATE WORK WILL START**

8-30-77

22. APPROX. DATE WORK WILL START**

8-30-77

PROPOSED CASING AND CEMENTING PROGRAM

SIZE OF HOLE	SIZE OF CASING	WEIGHT PER FOOT	SETTING DEPTH	QUANTITY OF CEMENT
12-1/4"	8-5/8"	24.0	250'	250 sacks
7-7/8"	4-1/2"	10.50 & 11.60	7525'	To be determined

It is proposed to drill this well with rotary tools, using oil base mud as circulation medium, through the Dakota Formation. Possible productive zones in the Dakota Formation will be completed. Production casing will be cemented in such a manner as to protect the Pictured Cliffs formation.

Estimated Formation Tops

Pictured Cliffs	3035'	Greenhorn	7145'
Cliff House	4625'	Graneros	7205'
Gallup	6165'	Dakota	7225'

The NW/4 Section 4 is dedicated to this well.

Natural gas produced from this well is not committed.

IN ABOVE SPACE DESCRIBE PROPOSED PROGRAM: If proposal is to deepen or plug back, give data on present productive zone and proposed new productive zone. If proposal is to drill or deepen directionally, give pertinent data on subsurface locations and measured and true vertical depths. Give blowout preventer program, if any.

24. For: Odessa Natural Corporation

President, Walsh Engineering
& Production Corp.

DATE June 23, 1977

Ewell N. Walsh, P. E.

(This space for Federal or State office use)

PERMIT NO.

APPROVAL DATE

APPROVED BY

TITLE

DATE

CONDITIONS OF APPROVAL, IF ANY:

*See Instructions On Reverse Side

**NEW MEXICO OIL CONSERVATION COMMISSION
WELL LOCATION AND ACREAGE DEDICATION PLAT**

Form C-102
Supersedes C-128
Effective 1-4-65

All distances must be from the outer boundaries of the Section.

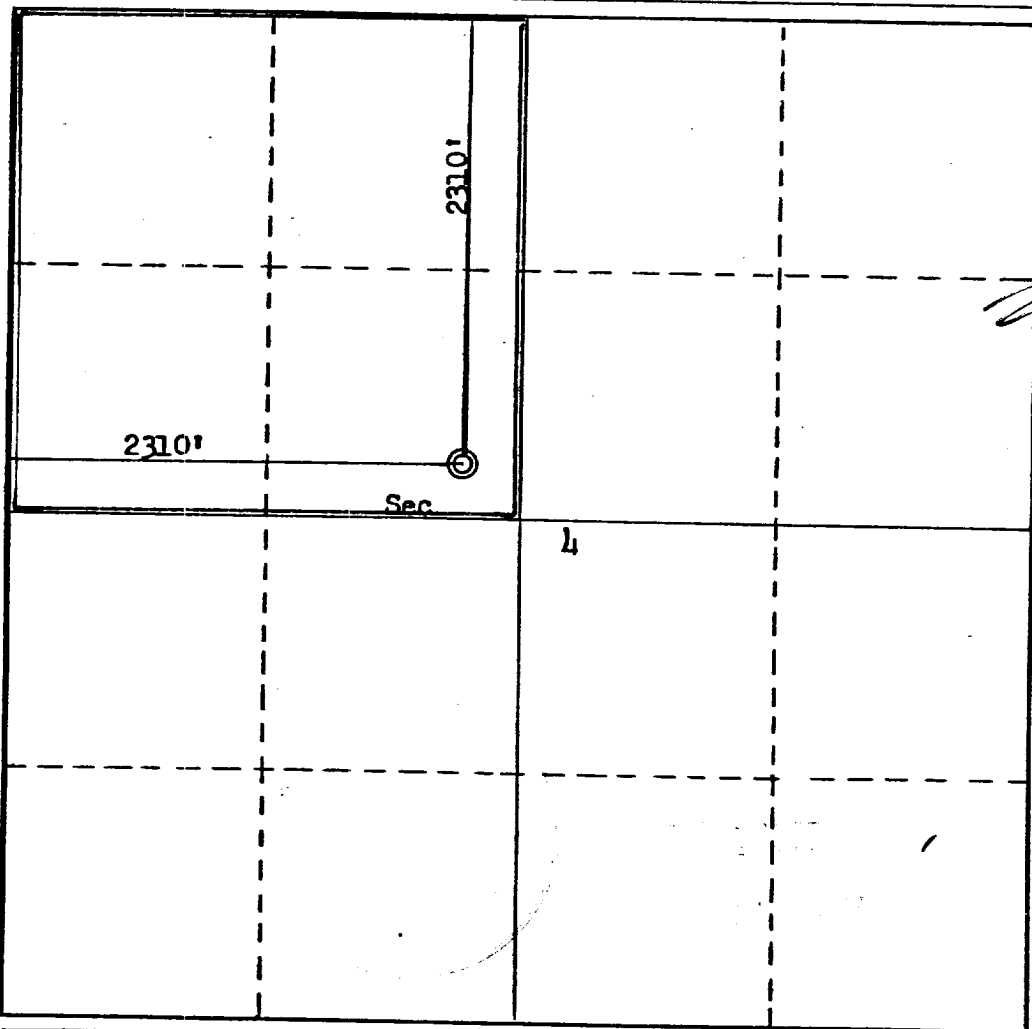
Operator Odessa Natural Corporation			Lease Jicarilla Joint Venture "KD" Lease		Well No. 4
Unit Letter F	Section 4	Township 23N	Range 3W	County Rio Arriba	
Actual Footage Location of Well: 2310 feet from the North line and 2310 feet from the West line					
Ground Level Elev. 7200	Producing Formation Dakota		Pool Chacon Dakota Associated Oil Pool		Dedicated Acreage: 160 / 150.72 Acres

1. Outline the acreage dedicated to the subject well by colored pencil or hachure marks on the plat below.
2. If more than one lease is dedicated to the well, outline each and identify the ownership thereof (both as to working interest and royalty).
3. If more than one lease of different ownership is dedicated to the well, have the interests of all owners been consolidated by communitization, unitization, force-pooling, etc?

☐ Yes ☐ No If answer is "yes," type of consolidation _____

If answer is "no," list the owners and tract descriptions which have actually been consolidated. (Use reverse side of this form if necessary.) _____

No allowable will be assigned to the well until all interests have been consolidated (by communitization, unitization, forced-pooling, or otherwise) or until a non-standard unit, eliminating such interests, has been approved by the Commission.



CERTIFICATION

I hereby certify that the information contained herein is true and complete to the best of my knowledge and belief.

For: **Odessa Natural Corp.**

Name: *[Signature]*
Position: **Ewell N. Walsh, P.E.
President**

Company: **Walsh Engineering & Production Corp.**

Date: **June 23, 1977**

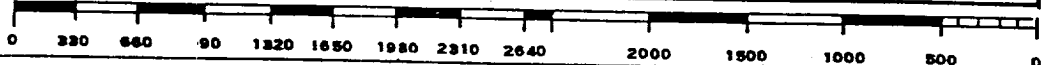
I hereby certify that the well location shown on this plat was plotted from field notes of actual surveys made by me or under my supervision, and that the same is true and correct to the best of my knowledge and belief.

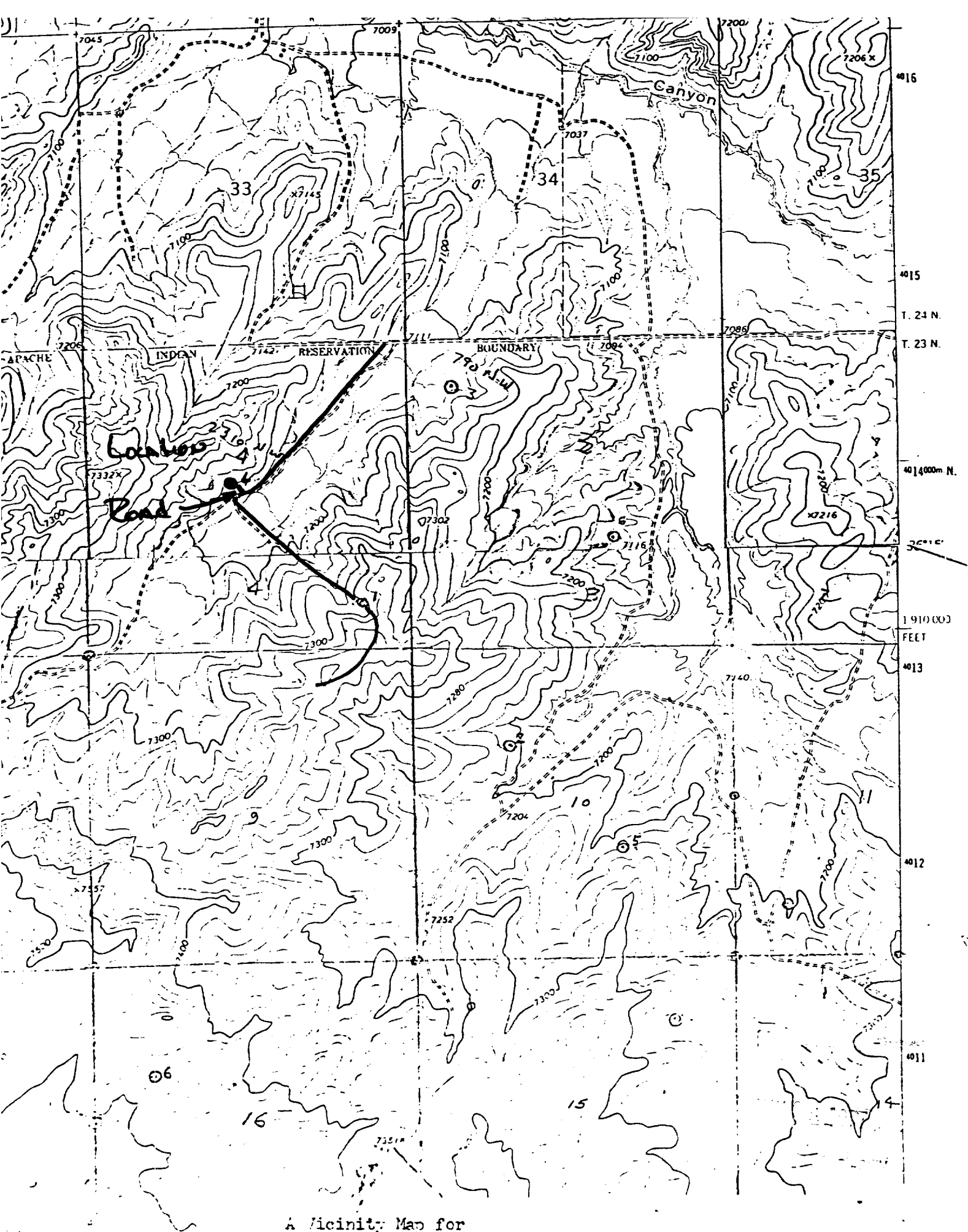
Date Surveyed: **March 29, 1977**

Registered Professional Engineer and/or Land Surveyor

[Signature]
Fred B. Kerr Jr.

Certificate No. **3950**





A Vicinity Map for
GROSSA NATURAL CORP. # L Jicarilla Joint Venture "KD" Lease
2310'FWL 2310'FWL Sec 4-T23N-R3E, Rio Arriba Co. New Mexico