

UNITED STATES
DEPARTMENT OF THE INTERIOR
GEOLOGICAL SURVEY

30-039-21808

5. LEASE DESIGNATION AND SERIAL NO.

515 NM 28692

6. IF INDIAN, ALLOTTEE OR TRIBE NAME

7. UNIT AGREEMENT NAME

8. FARM OR LEASE NAME

Harvard Federal

9. WELL NO.

1

10. FIELD AND BOO, OR WILDCAT

South Platte - PC ext
Wildcat11. SEC., T., R., M., OR BLK.
AND SURVEY OR AREA

Sec. 2, T23N, R1W

12. COUNTY OR PARISH 13. STATE

Rio Arriba

New Mexico

APPLICATION FOR PERMIT TO DRILL, DEEPEN, OR PLUG BACK

1a. TYPE OF WORK

DRILL ☒DEEPEN ☐PLUG BACK ☐

b. TYPE OF WELL

OIL
WELL ☐GAS
WELL ☒

OTHER

SINGLE
ZONE ☒MULTIPLE
ZONE ☐

2. NAME OF OPERATOR

Resources Investment Corporation

3. ADDRESS OF OPERATOR

1st of Denver Plaza, Ste. 2080, 633 - 17th St. Denver, CO 80202

4. LOCATION OF WELL (Report location clearly and in accordance with any State requirements.)*

At surface

1850 SNL & 1850 WEL

At proposed prod. zone

Same

14. DISTANCE IN MILES AND DIRECTION FROM NEAREST TOWN OR POST OFFICE*

5.2 miles north of Regina, New Mexico

15. DISTANCE FROM PROPOSED*

LOCATION TO NEAREST
PROPERTY OR LEASE LINE, FT.
(Also to nearest drlg. unit line, if any)

790'

16. NO. OF ACRES IN LEASE

162.65

17. NO. OF ACRES ASSIGNED
TO THIS WELL

162.65

18. DISTANCE FROM PROPOSED LOCATION*

TO NEAREST WELL, DRILLING, COMPLETED,
OR APPLIED FOR, ON THIS LEASE, FT.

19. PROPOSED DEPTH

2800'

20. ROTARY OR CABLE TOOLS

Rotary

21. ELEVATIONS (Show whether DF, RT, GR, etc.)

7267' GL

22. APPROX. DATE WORK WILL START*

July 1, 1978

23.

PROPOSED CASING AND CEMENTING PROGRAM

SIZE OF HOLE	SIZE OF CASING	WEIGHT PER FOOT	SETTING DEPTH	QUANTITY OF CEMENT
12-1/4	8-5/8"	24#	100'	To Surface
7-7/8"	4-1/2	10.5#	TD	250 Sx.

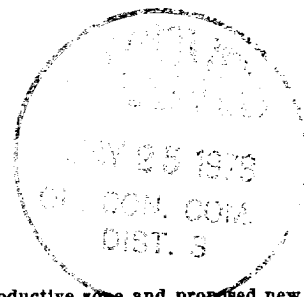
Drill a 2800' Pictured Cliffs test.

Drill 12-1/4" hole and set 8-5/8" casing at 100'.

Drill a 7-7/8" hole and, if productive, set 4-1/2" casing at TD.

BOP will be a 10" Series 900 hydraulic operated.

gas is not dedicated



IN ABOVE SPACE DESCRIBE PROPOSED PROGRAM: If proposal is to deepen or plug back, give data on present productive zone and proposed new productive zone. If proposal is to drill or deepen directionally, give pertinent data on subsurface locations and measured and true vertical depths. Give blowout preventer program, if any.

24.

SIGNED

Charles A. Clark
Acting for Resources Investment Corp.

TITLE

DATE

5-19-78

(This space for Federal or State office use)

PERMIT NO.

APPROVAL DATE

RECEIVED

APPROVED BY

TITLE

MAY 24 1978

CONDITIONS OF APPROVAL, IF ANY:

ok Frank

U. S. GEOLOGICAL SURVEY
DURANGO, COLO.

*See Instructions On Reverse Side

**NEW MEXICO OIL CONSERVATION COMMISSION
WELL LOCATION AND ACREAGE DEDICATION PLAT**

Form C-102
Supersedes C-128
Effective 1-1-65

All distances must be from the outer boundaries of the Section.

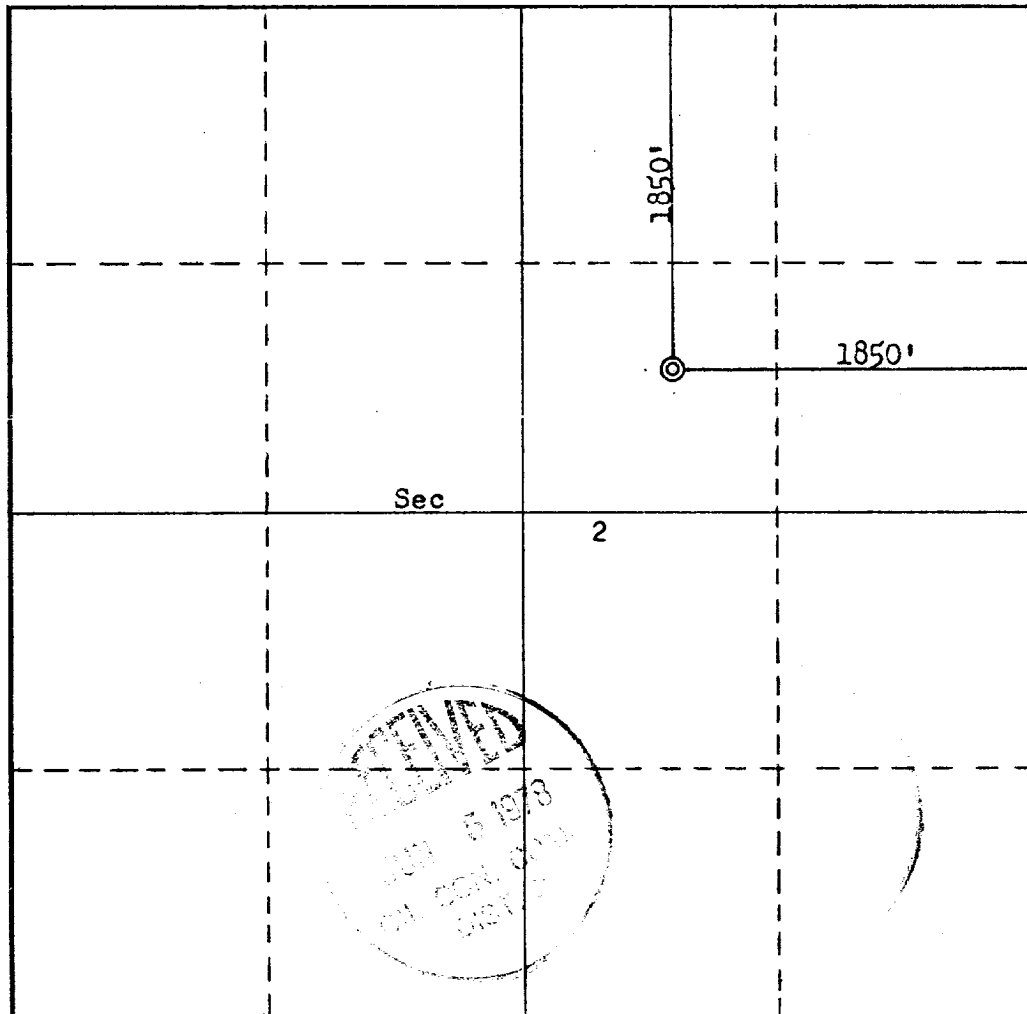
Operator RESOURCES INVESTMENT CORPORATION			Lease HARVARD-FEDERAL		Well No. 1
Unit Letter G	Section 2	Township 23N	Range 1W	County Rio Arriba	
Actual Footage Location of Well: 1850 feet from the North line and 1850 feet from the East line					
Ground Level Elev. 7267	Producing Formation <i>Pictured Cliffs</i>		Pool <i>South Blanco extension</i>	Dedicated Acreage: 162.65 Acres	

1. Outline the acreage dedicated to the subject well by colored pencil or hatchure marks on the plat below.
2. If more than one lease is dedicated to the well, outline each and identify the ownership thereof (both as to working interest and royalty). *N/A*
3. If more than one lease of different ownership is dedicated to the well, have the interests of all owners been consolidated by communitization, unitization, force-pooling, etc? *N/A*

☐ Yes ☐ No If answer is "yes," type of consolidation _____

If answer is "no," list the owners and tract descriptions which have actually been consolidated. (Use reverse side of this form if necessary.) _____

No allowable will be assigned to the well until all interests have been consolidated (by communitization, unitization, forced-pooling, or otherwise) or until a non-standard unit, eliminating such interests, has been approved by the Commission.



CERTIFICATION

I hereby certify that the information contained herein is true and complete to the best of my knowledge and belief.

Name
Marv W. Isaacson

Position
District Superintendent

Company
RESOURCES INVESTMENT CORP.

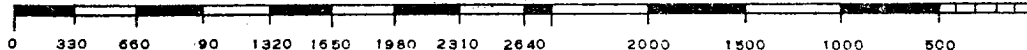
Date
May 30, 1978

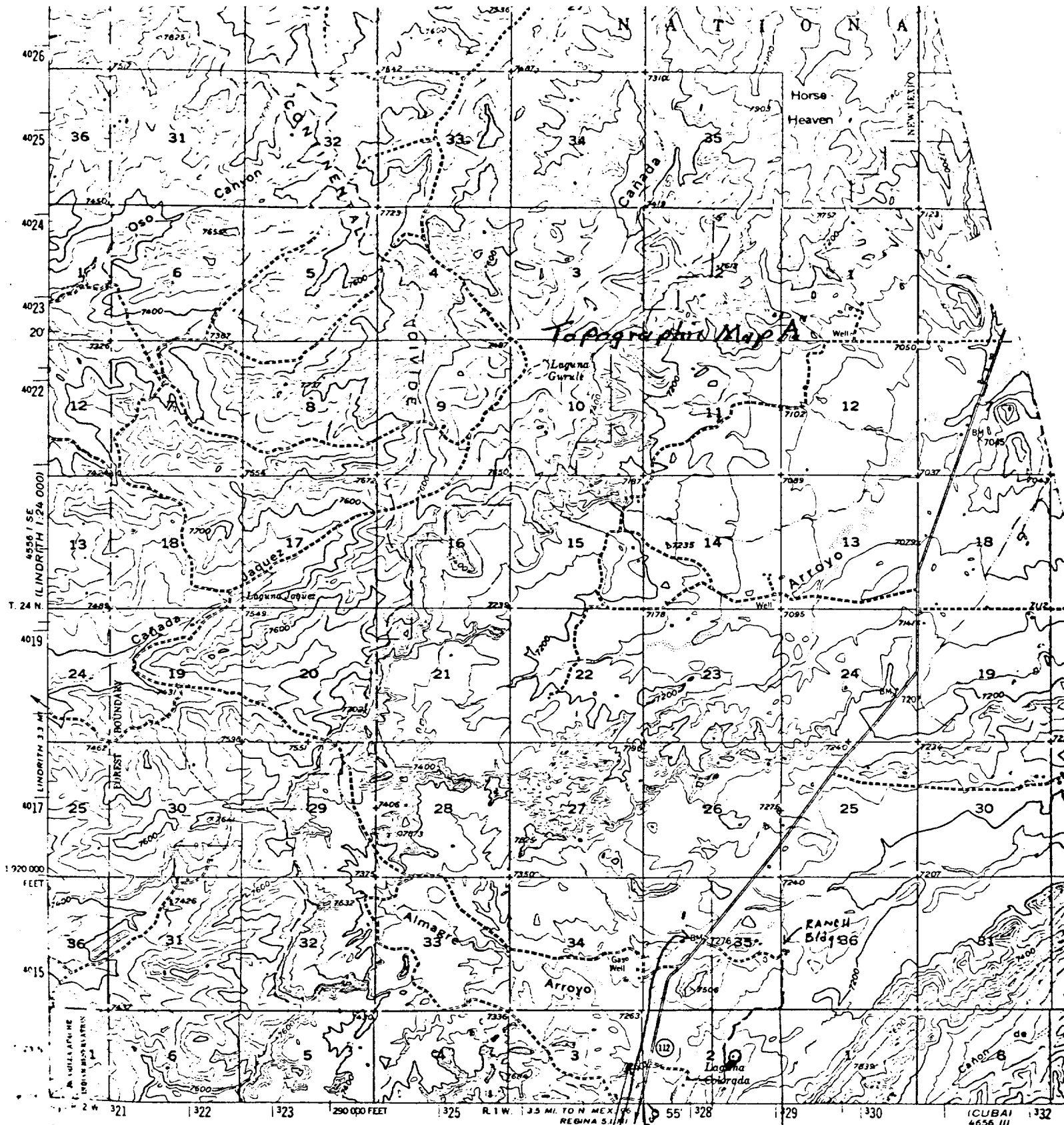
I hereby certify that the well location shown on this plat was plotted from field notes of actual surveys made by me or under my supervision, and that the same is true and correct to the best of my knowledge and belief.

Date Surveyed
May 10, 1978

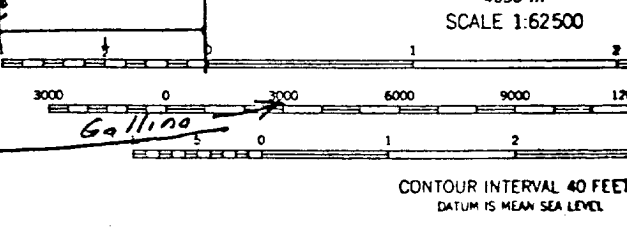
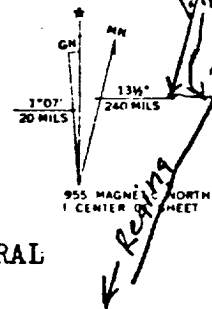
Registered Professional Engineer and/or Land Surveyor
Fred B. Kerr Jr.
Fred B. Kerr Jr.

Certificate No.
3950





Made, edited, and published by the Geological Survey
 by USGS and USC&GS
 from aerial photographs by photogrammetric methods
 photographs taken 1952. Field check 1955
 projection. 1927 North American datum
 and based on New Mexico coordinate system.
 and lines unsurveyed in Ts. 24 and 26 N.-R. 2 E.
 and 26 N.-R. 1 W., and T. 26 N.-R. 1 E.



Vicinity Map for
 RESOURCES INV. CORP. #1 HARVARD-FEDERAL
 1850'FNL 1850'FEL Sec 2-T23N-R1W
 Rio Arriba County, New Mexico

Planned Access Road
 THIS MAP COMPLIES WITH NATIONAL MAP ACCUR
 FOR SALE BY U. S. GEOLOGICAL SURVEY, DENVER, COLORADO
 A FOLDER DESCRIBING TOPOGRAPHIC MAPS AND SYMBOLS