

WELL LOCATION AND ACREAGE DEDICATION AT

Superceded by Order
Effective 1-1-66

All distances must be from the outer boundaries of the Section

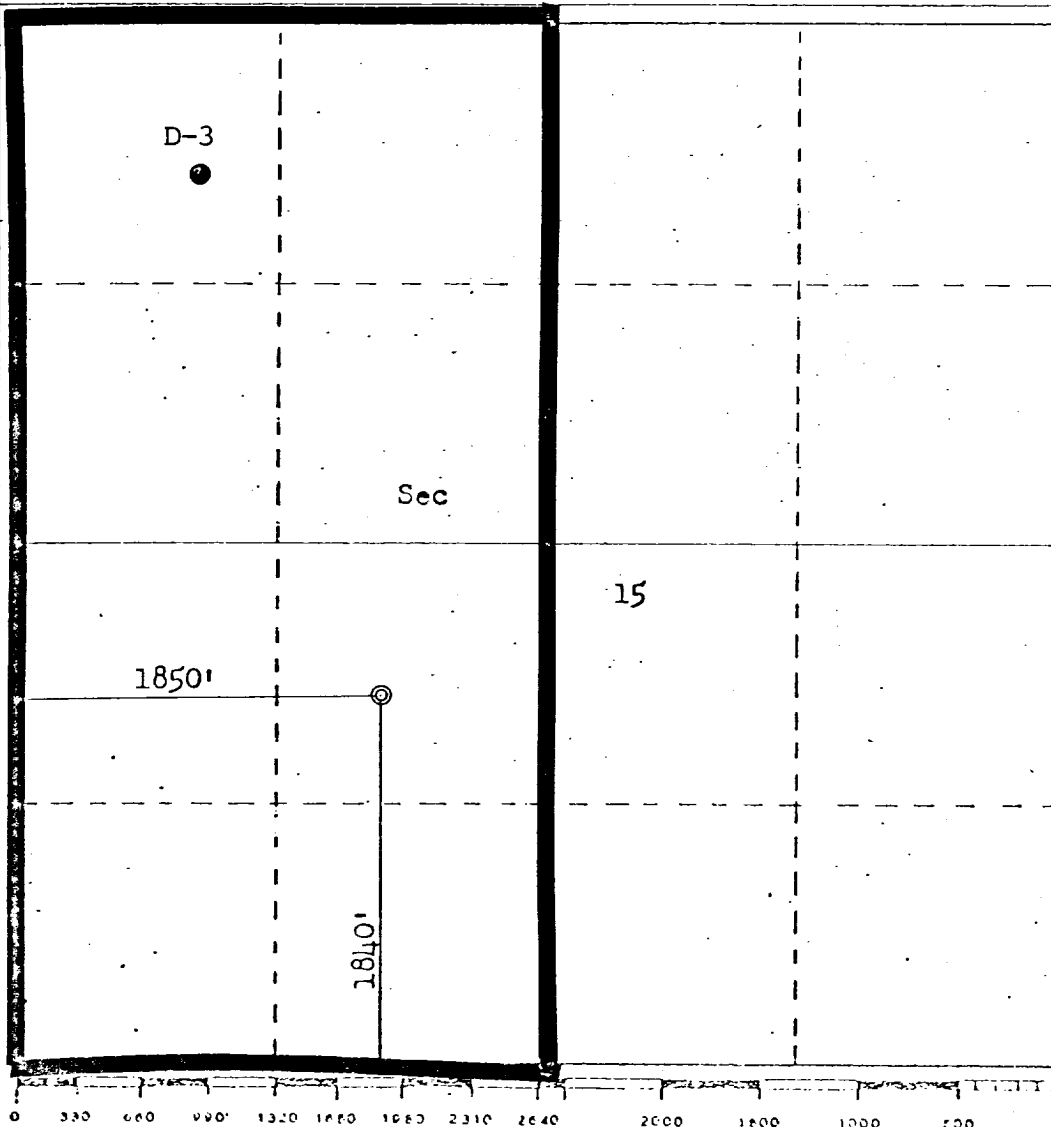
Operator DAVE M. THOMAS JR.		Lease CHACON-JICARILLA APACHE "D"		Well No. 7
Unit Letter K	Section 15	Township 23N	Range 3W	County Rio Arriba
Actual Footage Location of Well:				
1840	feet from the	South	line and	1850
				feet from the
				West
Ground Level Elev. 7384	Producing Formation Dakota		Pool Chacon Dakota Associated	Dedicated Acreage 320
				Acreage

- Outline the acreage dedicated to the subject well by colored pencil or hachure marks on the plat below.
- If more than one lease is dedicated to the well, outline each and identify the ownership thereof (both as to working interest and royalty).
- If more than one lease of different ownership is dedicated to the well, have the interests of all owners been consolidated by communitization, unitization, force-pooling, etc?

☐ Yes ☐ No If answer is "yes," type of consolidation _____

If answer is "no," list the owners and tract descriptions which have actually been consolidated. (Use reverse side of this form if necessary.) _____

No allowable will be assigned to the well until all interests have been consolidated (by communitization, unitization, forced-pooling, or otherwise) or until a non-standard unit, eliminating such interests, has been approved by the Commission.



CERTIFICATION

I hereby certify that the information contained herein is true and complete to the best of my knowledge and belief.

FOR: **DAVE M. THOMAS, JR.**

ORIGINAL SIGNED BY

Name **EWELL N. WALSH**
Ewell N. Walsh, P.E.

Position
President

Company
Walsh Engr. & Prod. Corp.

Date
4/6/83

I hereby certify that the well location shown on this plat was plotted from field notes of actual surveys made by me or under my supervision, and that the same is true and correct to the best of my knowledge and belief.

Date Surveyed
December 23, 1978

Registered Professional Engineer
and
Land Surveyor
in the State of New Mexico
No. 10352

Fred B. Kern Jr.

Certified by **FERR, JR.**

3950