

**El Paso** EXPLORATION  
COMPANY

P. O. BOX 289  
FARMINGTON, NEW MEXICO 87401  
PHONE: 505-325-2841

June 10, 1983

Mr. Joe Ramey  
New Mexico Oil Conservation Division  
Post Office Box 2088  
Santa Fe, New Mexico 87501

RECEIVED  
JUN 15 1983

OIL CON. DIV.  
DIST. 3

Re: Jicarilla Jt.Venture KD #8  
Unit K, Section 4, T-23-N, R-3-W  
Rio Arriba County, New Mexico  
Chacon Dakota Associated Pool

Dear Mr. Ramey:

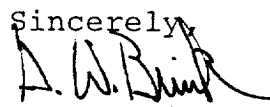
This is a request by El Paso Exploration Company for administrative approval for a non-standard proration unit for the subject gas well located in the Chacon Dakota Associated Pool.

Reference is made to the special rules and regulations for the Chacon Dakota Associated Pool which states a standard oil proration unit shall be 160 acres and a standard gas proration unit shall be 320 acres.

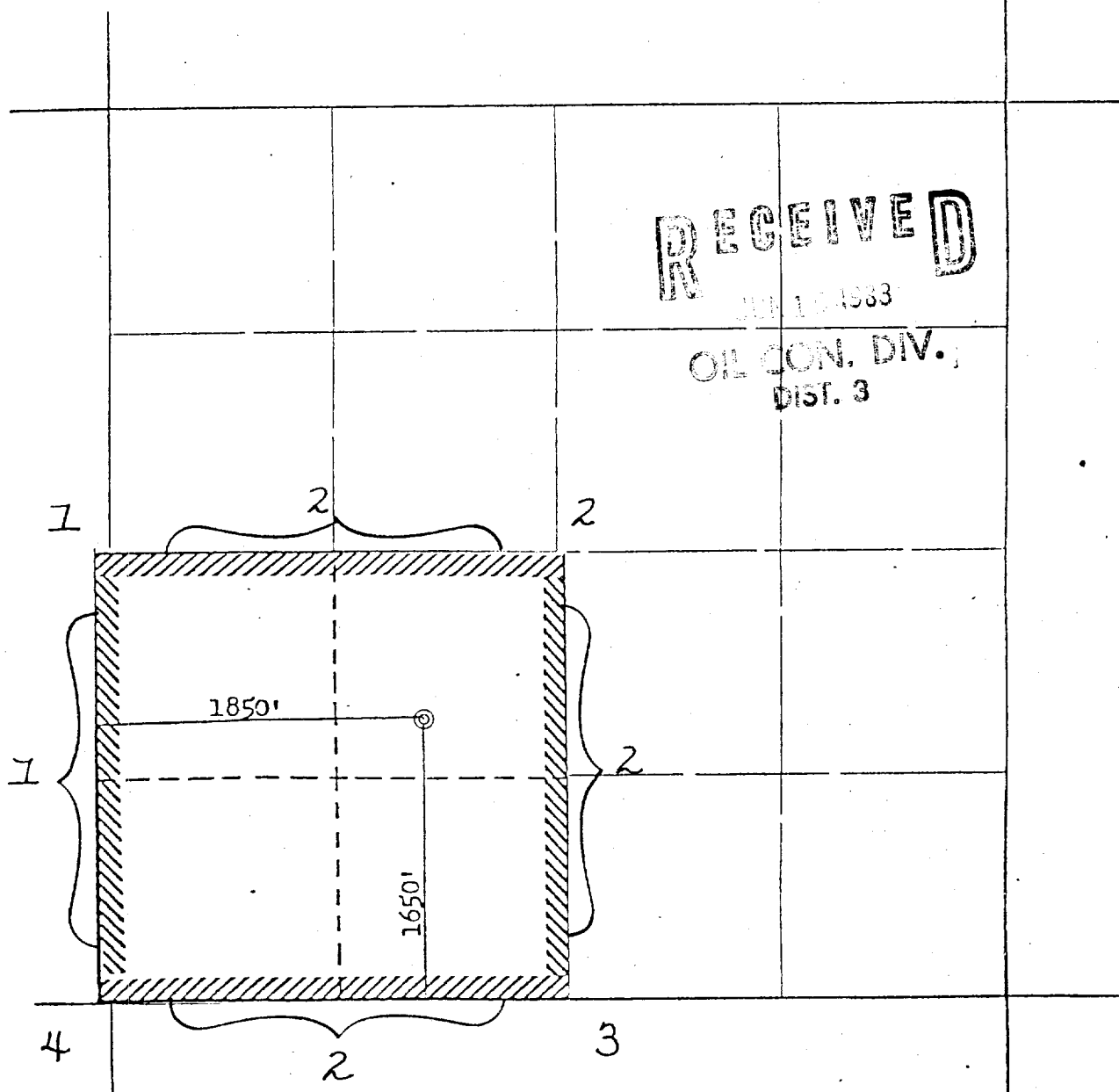
The Jicarilla Jt. Venture KD #8 is currently classified as a gas well which would require the 320 acres of the S/2 of Section 4, T-23-N, R-3-W to be dedicated to this well. However, the Jicarilla Jt.Venture KD #1 located in the SE/4 of Section 4, T-23-N, R-3-W is classified as an oil well which requires a 160 acre dedication. Since simultaneous dedication of acreage is prohibited, it is impossible to operate the Jicarilla Jt.Venture KD #8 on a standard proration unit.

A copy of this application is being submitted to all offset operators by certified mail with a request that they furnish your Santa Fe office with a waiver of objection.

Plats showing the well location and offset ownership are attached.

Sincerely,  
  
G. W. Brink

cc: Frank Chavez- NMOCD  
Minerals Management Service-BLM

Well Name Jicarilla Joint Venture "KD" #8, Chacon DakotaFootage----- 1650' FSL, 1850' FWLAPPLICATION FOR NON-STANDARD PRORATION UNITCounty Rio Arriba State New Mexico Section 4 Township 23N Range 3W

## REMARKS:

- (1) Arco Oil & Gas Company
- (2) El Paso Exploration Company
- (3) Dave M. Thomas, Jr.
- (4) Jack Cole

All distances must be from the outer boundaries of the Section.

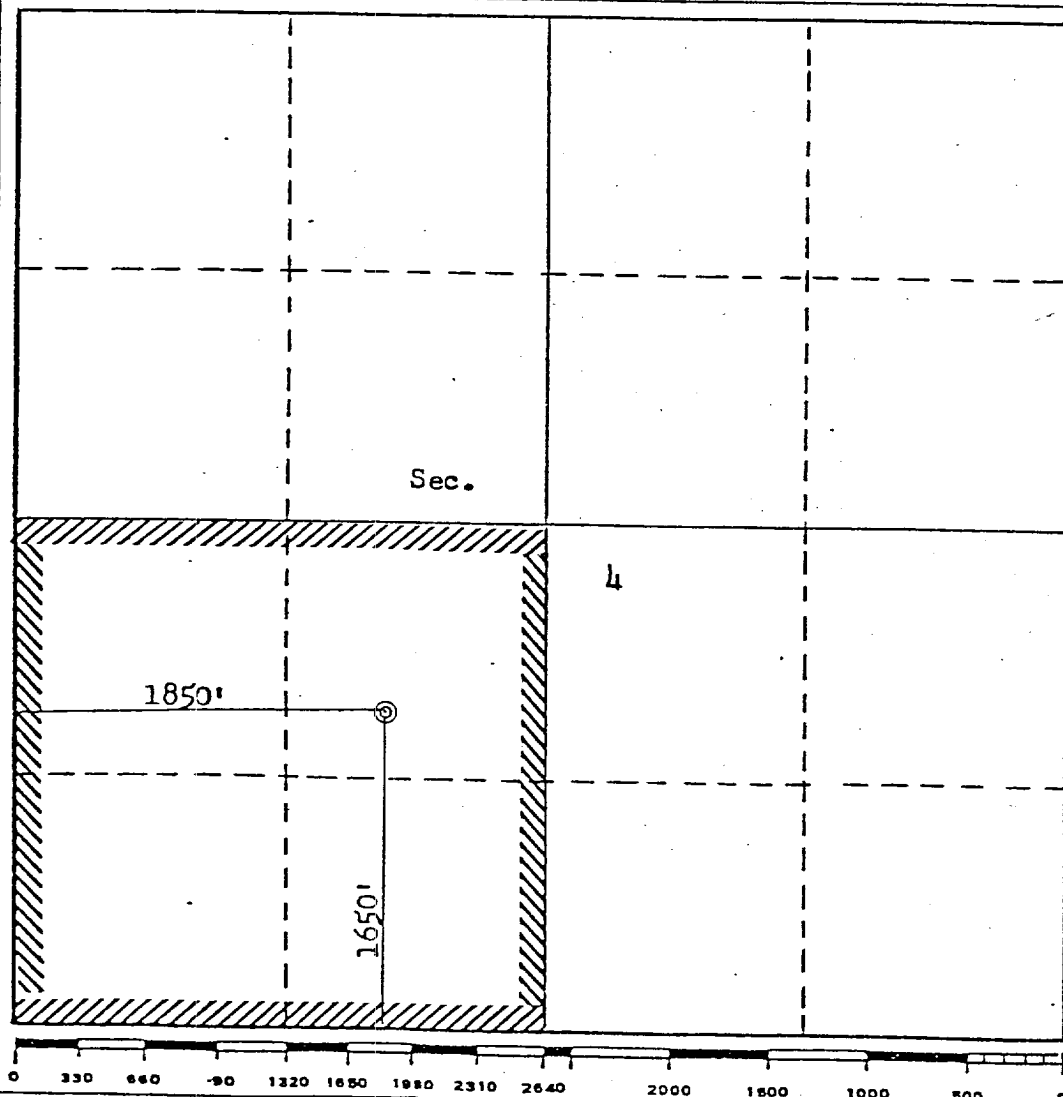
Operator <b>EL PASO EXPLORATION COMPANY</b>			Lease <b>JICARILLA JOINT VENTURES "KD"</b>		Well No. <b>8</b>
Unit Letter <b>K</b>	Section <b>4</b>	Township <b>23N</b>	Range <b>3W</b>	County <b>Rio Arriba</b>	
Actual Footage Location of Well: <b>1650</b> feet from the <b>South</b> line and <b>1850</b> feet from the <b>West</b> line					
Ground Level Elev. <b>7201</b>	Producing Formation <b>Dakota</b>		Pool <b>Chacon Dakota Associated</b>		Dedicated Acreage <b>160</b> Acres

1. Outline the acreage dedicated to the subject well by colored pencil or hachure marks on the plat below.
2. If more than one lease is dedicated to the well, outline each and identify the ownership thereof (both as to working interest and royalty).
3. If more than one lease of different ownership is dedicated to the well, have the interests of all owners been consolidated by communitization, unitization, force-pooling, etc?

☐ Yes ☐ No If answer is "yes," type of consolidation \_\_\_\_\_

If answer is "no," list the owners and tract descriptions which have actually been consolidated. (Use reverse side of this form if necessary.) \_\_\_\_\_

No allowable will be assigned to the well until all interests have been consolidated (by communitization, unitization, forced-pooling, or otherwise) or until a non-standard unit, eliminating such interests, has been approved by the Commission.



CERTIFICATION

I hereby certify that the information contained herein is true and complete to the best of my knowledge and belief.

*Nora G. Guisco*  
Name

Drilling clerk  
Position

El Paso Exploration Co.  
Company

June 8, 1983  
Date

I hereby certify that the well location shown on this plat was plotted from field notes of actual surveys made by me or under my supervision, and that the same is true and correct to the best of my knowledge and belief.

Date Surveyed  
**August 10, 1983**  
Registered Professional Engineer and/or Land Surveyor  
*Fred B. Kerr, Jr.*  
Certificate No. **3950**