

UNITED STATES
DEPARTMENT OF THE INTERIOR
GEOLOGICAL SURVEY

APPLICATION FOR PERMIT TO DRILL, DEEPEN, OR PLUG BACK

1a. TYPE OF WORK

DRILL ☒DEEPEN ☐PLUG BACK ☐

b. TYPE OF WELL

OIL
WELL ☐GAS
WELL ☒

OTHER

SINGLE
ZONE ☐MULTIPLE
ZONE ☐

2. NAME OF OPERATOR

Amerada Hess Corporation

3. ADDRESS OF OPERATOR

Box 2040 - Tulsa, Oklahoma 74102

4. LOCATION OF WELL (Report location clearly and in accordance with any State requirements.*)

At surface

1760' FNL, 1840' FEL

At proposed prod. zone

14. DISTANCE IN MILES AND DIRECTION FROM NEAREST TOWN OR POST OFFICE*

Est. 18-20 miles NE Lindrith New Mexico

10. DISTANCE FROM PROPOSED*

LOCATION TO NEAREST
PROPERTY OR LEASE LINE, FT.
(Also to nearest drlg. unit line, if any)

N/A

16. NO. OF ACRES IN LEASE

2217.7

17. NO. OF ACRES ASSIGNED
TO THIS WELL

Picture Cliff 160

18. DISTANCE FROM PROPOSED LOCATION*
TO NEAREST WELL, DRILLING, COMPLETED,
OR APPLIED FOR, ON THIS LEASE, FT.

19. PROPOSED DEPTH

3200'

20. ROTARY OR CABLE TOOLS

Rotary

21. ELEVATIONS (Show whether DF, RT, GR, etc.)

7140' GR

22. APPROX. DATE WORK WILL START*

October 1, 1979

23.

PROPOSED CASING AND CEMENTING PROGRAM

SIZE OF HOLE	SIZE OF CASING	WEIGHT PER FOOT	SETTING DEPTH	QUANTITY OF CEMENT
12 1/4"	8-5/8"	29#	300' +/-	350 sx.
7-7/8"	4-1/2"	9.5#	3200' +/-	1000 sx.

Plan to drill from surface to 300'. Set and cement 8-5/8" csg. WOC and drill out from under 8-5/8" csg to the proposed TD of 3200' +/- or sufficient depth to test the Picture Cliff formation. Log well and if productive, complete as a gas well with 4 1/2" csg. set at TD and cemented. No cores or DST are anticipated.

Mud program is to use low viscosity and low water loss mud from under surface casing to TD with viscosity 60-70 for logging.

Attachments: BOP Equipment program, NTL-6, Surface usage Plan, Location maps, Plats and drilling rig layout plan.

gas is desaturated

IN ABOVE SPACE DESCRIBE PROPOSED PROGRAM: If proposal is to deepen or plug back, give data on present productive zone and proposed new productive zone. If proposal is to drill or deepen directionally, give pertinent data on subsurface locations and measured and true vertical depths. Give blowout preventer program, if any.

24.

SIGNED

H.O. Porter H.O. Porter

TITLE

Supv. Drilling Admin. Svcs.

DATE

Sept. 10, 1979

(This space for Federal or State office use)

PERMIT NO.

APPROVAL DATE

APPROVED BY

TITLE

DATE

CONDITIONS OF APPROVAL, IF ANY:

ok Frank

*See Instructions On Reverse Side

30-039-22164

5. LEASE DESIGNATION AND SERIAL NO.

Jic. 167

6. IF INDIAN, ALLOTTEE OR TRIBE NAME

Jicarilla Apache

7. UNIT AGREEMENT NAME

8. FARM OR LEASE NAME

Jic. Apache "I"

9. WELL NO.

7

10. FIELD AND TOOL, OR WILDCAT

S. Blain
Picture Cliff11. SEC., T., R., M., OR BLK.
AND SURVEY OR AREA

Sec. 1, T23N, R3W

12. COUNTY OR PARISH

13. STATE

Rio Arriba

New Mexico

OIL CONSERVATION DIVISION

STATE OF NEW MEXICO
ENERGY AND MINERALS DEPARTMENTP. O. BOX 2088
SANTA FE, NEW MEXICO 87501Form C-107
Revised 10-1-78

All distances must be from the corner boundaries of the Section.

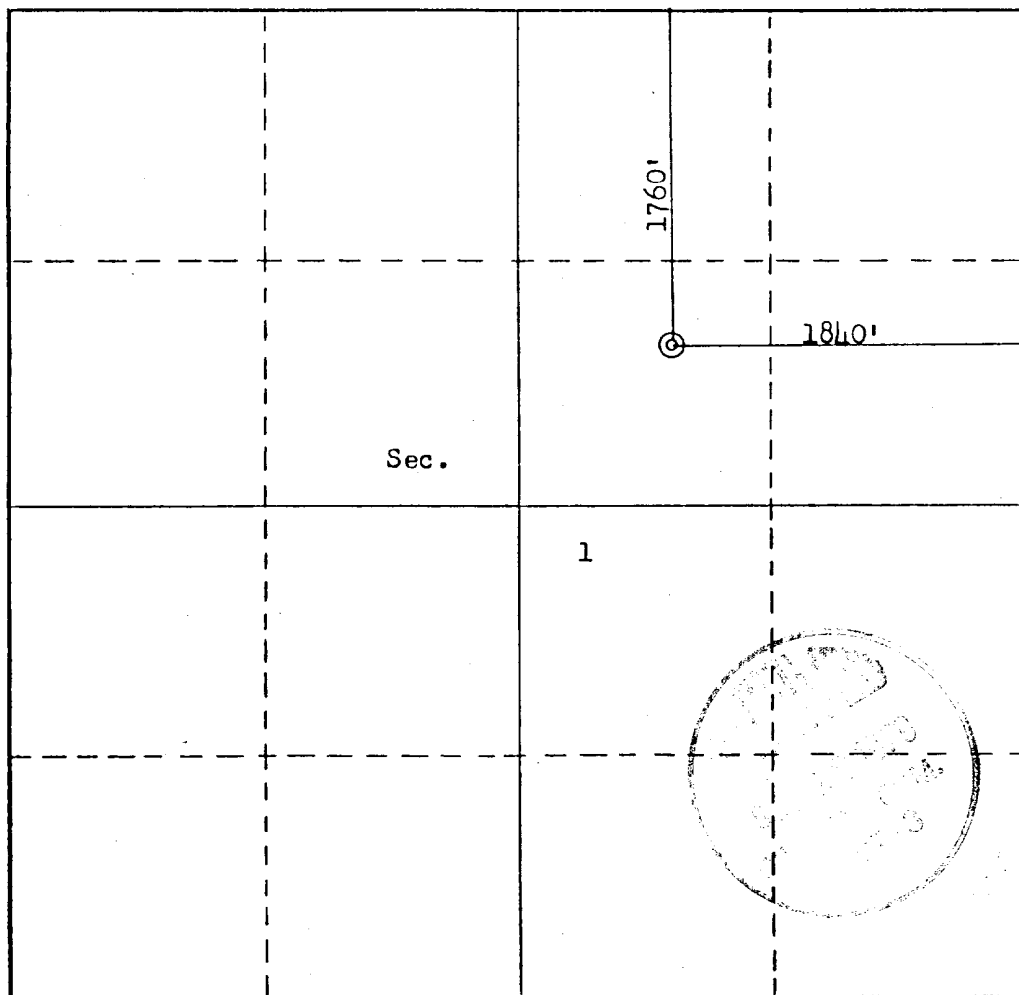
Operator AMERADA HESS CORPORATION			Lease 9-12		Well No. 7
Unit Letter G	Section 1	Township 23N	Range 3W	County Rio Arriba	
Actual Footage Location of Well: 1760 feet from the North line and 1840 feet from the East line					
Ground Level Elev. 7144	Producing Formation Pictured Cliffs		Pool Picture Cliff		Dedicated Acreage: 160 Acres

1. Outline the acreage dedicated to the subject well by colored pencil or hachure marks on the plat below.
2. If more than one lease is dedicated to the well, outline each and identify the ownership thereof (both as to working interest and royalty).
3. If more than one lease of different ownership is dedicated to the well, have the interests of all owners been consolidated by communitization, unitization, force-pooling, etc?

☐ Yes ☐ No If answer is "yes," type of consolidation N/A

If answer is "no," list the owners and tract descriptions which have actually been consolidated. (Use reverse side of this form if necessary.) N/A

No allowable will be assigned to the well until all interests have been consolidated (by communitization, unitization, forced-pooling, or otherwise) or until a non-standard unit, eliminating such interests, has been approved by the Commission.



CERTIFICATION

I hereby certify that the information contained herein is true and complete to the best of my knowledge and belief.

H.O. Porter

Name

H.O. Porter

Position

Supv. Drlg. Admin. Svcs.

Company

Amerada Hess Corporation

Date

September 10, 1979

I hereby certify that the well location shown on this plat was plotted from field notes of actual surveys made by me or under my supervision, and that the same is true and correct to the best of my knowledge and belief.

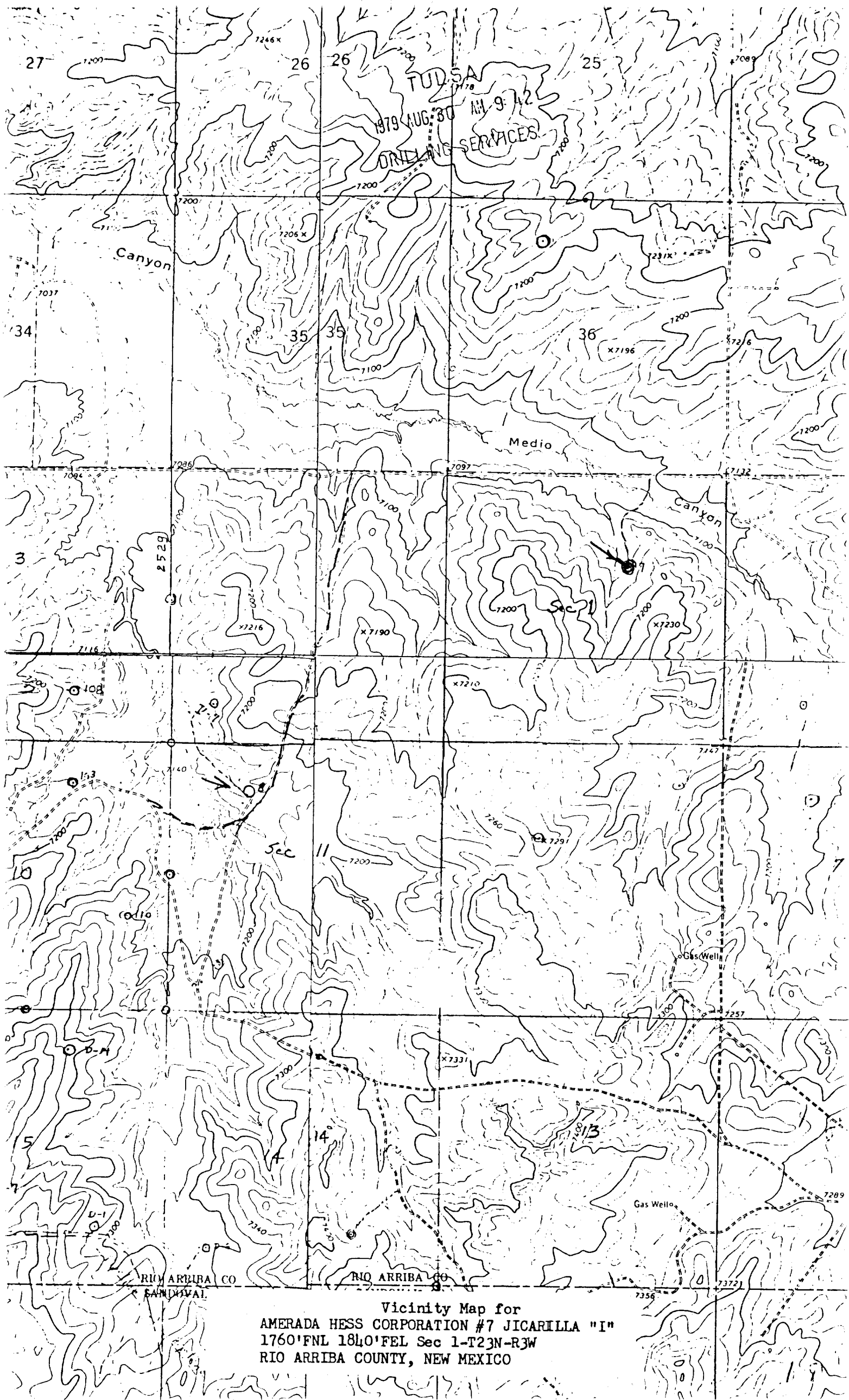
Date Surveyed

August 21, 1979

Registered Professional Engineer and/or Land Surveyor

Fred B. Kerr, Jr.
Certificate No. 3950

0 330 660 990 1320 1650 1980 2310 2640 2000 1800 1000 800 0



Vicinity Map for
AMERADA HESS CORPORATION #7 JICARILLA "I"
1760'FNL 1840'FEL Sec 1-T23N-R3W
RIO ARRIBA COUNTY, NEW MEXICO