

UNITED STATES  
DEPARTMENT OF THE INTERIOR  
GEOLOGICAL SURVEY

## APPLICATION FOR PERMIT TO DRILL, DEEPEN, OR PLUG BACK

1a. TYPE OF WORK DRILL ☒ DEEPEN ☐ PLUG BACK ☐b. TYPE OF WELL  
OIL WELL ☒ GAS WELL ☐ OTHER ☐  
SINGLE ZONE ☒ MULTIPLE ZONE ☐

2. NAME OF OPERATOR

ODESSA NATURAL CORPORATION Attn: John Strojek

3. ADDRESS OF OPERATOR

P. O. Box 3908, Odessa, Texas 79760

4. LOCATION OF WELL (Report location clearly and in accordance with any State requirements.)\*  
At surface

1850' FSL, 1850' FWL

At proposed prod. zone

Same

14. DISTANCE IN MILES AND DIRECTION FROM NEAREST TOWN OR POST OFFICE\*

Not Applicable

15. DISTANCE FROM PROPOSED\*

LOCATION TO NEAREST  
PROPERTY OR LEASE LINE, FT.  
(Also to nearest drlg. unit line, if any)

1850'

18. DISTANCE FROM PROPOSED LOCATION\*  
TO NEAREST WELL, DRILLING, COMPLETED,  
OR APPLIED FOR, ON THIS LEASE, FT.

2640'

16. NO. OF ACRES IN LEASE

640

19. PROPOSED DEPTH

7730'

17. NO. OF ACRES ASSIGNED  
TO THIS WELL

160

20. ROTARY OR CABLE TOOLS

Rotary

22. APPROX. DATE WORK WILL START\*

11/5/79

23. PROPOSED CASING AND CEMENTING PROGRAM

SIZE OF HOLE	SIZE OF CASING	WEIGHT PER FOOT	SETTING DEPTH	QUANTITY OF CEMENT
12-1/4"	8-5/8"	24.0	250'	250 sacks
7-7/8"	4-1/2"	10.50 & 11.60	7730'	To be determined

It is proposed to drill this well with rotary tools, using oil base mud as circulation medium, through the Dakota Formation. Possible Productive zones in the Dakota Formation will be completed. Production casing will be cemented in such a manner as to protect the Pictured Cliffs Formation.

## Estimated Formation Tops

Pictured Cliffs	3174'	Green Horn	7287'
Cliff House	4734'	Graneros	7348'
Gallup	6296'	Dakota	7368'

The SW/4 Section 9 is dedicated to this well.

The natural gas produced from this well is committed.

IN ABOVE SPACE DESCRIBE PROPOSED PROGRAM: If proposal is to deepen or plug back, give data on present productive zone and proposed new productive zone. If proposal is to drill or deepen directionally, give pertinent data on subsurface locations and measured and true vertical depths. Give blowout preventer program, if any.

24. FOR: ODESSA NATURAL CORPORATION

SIGNED

Ewell N. Walsh, P.E.  
(This space for Federal or State office use)ORIGINAL SIGNED BY  
EWELL N. WALSH

President, Walsh Engr. &amp; Prod. Corp. DATE 10/12/79

PERMIT NO.

APPROVAL DATE

APPROVED BY

CONDITIONS OF APPROVAL, IF ANY:

TITLE

\*See Instructions On Reverse Side

## OIL CONSERVATION DIVISION

STATE OF NEW MEXICO  
ENERGY AND MINERALS DEPARTMENTP. O. BOX 2088  
SANTA FE, NEW MEXICO 87501Form C-107  
Revised 10-1-78

All distances must be from the outer boundaries of the Section.

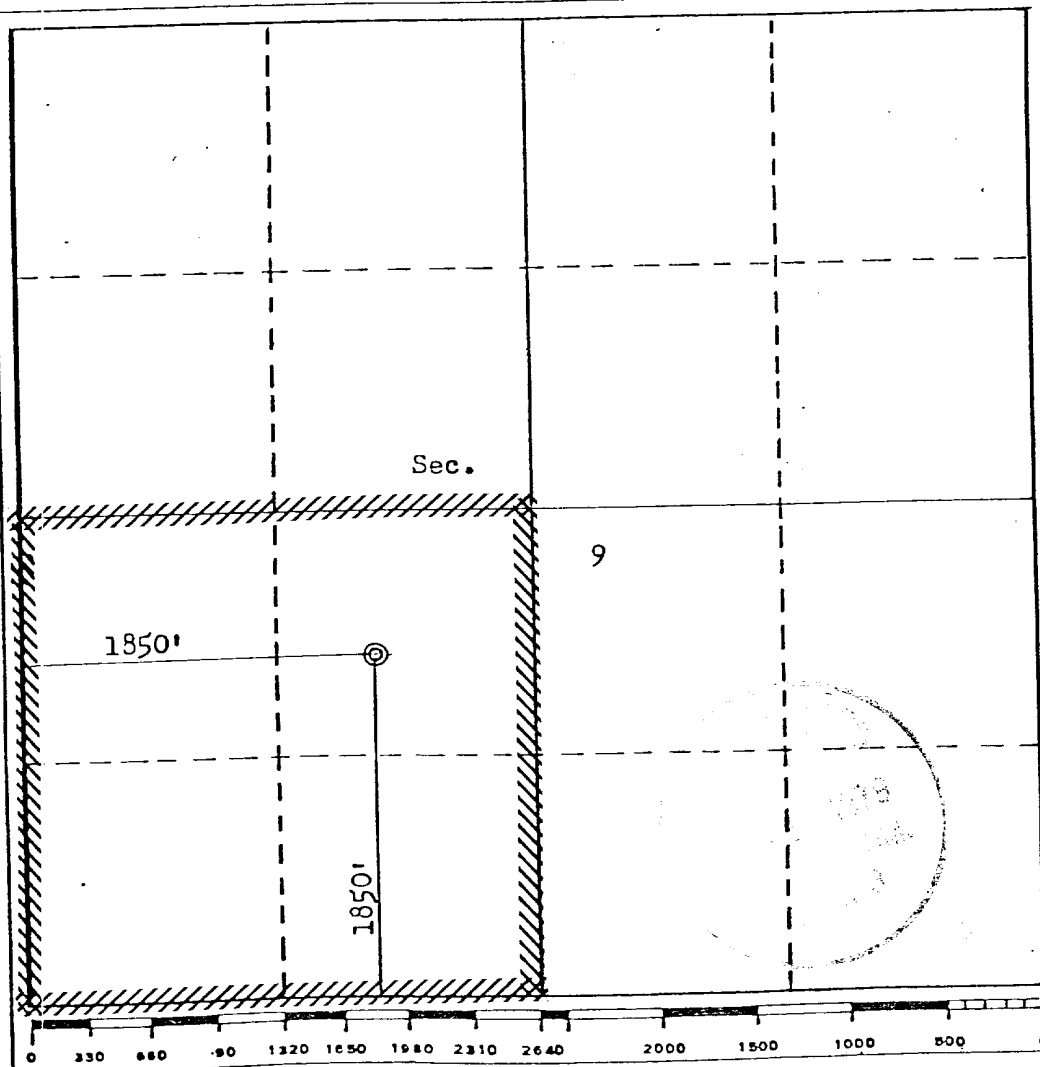
Operator <b>ODESSA NATURAL CORPORATION</b>			Lease <b>CHACON JICARILLA "D"</b>		Well No. <b>15</b>
Unit Letter <b>K</b>	Section <b>9</b>	Township <b>23N</b>	Range <b>3W</b>	County <b>Rio Arriba</b>	
Actual Footage Location of Well: <b>1850</b> feet from the <b>South</b> line and <b>1850</b> feet from the <b>West</b> line					
Ground Level Elev. <b>7359</b>	Producing Formation <b>Dakota</b>	Pool <b>Chacon Dakota Associated</b>		Dedicated Acreage <b>160</b> Acres	

1. Outline the acreage dedicated to the subject well by colored pencil or hatchure marks on the plat below.
2. If more than one lease is dedicated to the well, outline each and identify the ownership thereof (both as to working interest and royalty).
3. If more than one lease of different ownership is dedicated to the well, have the interests of all owners been consolidated by communitization, unitization, force-pooling, etc?

☐ Yes ☐ No If answer is "yes," type of consolidation \_\_\_\_\_

If answer is "no," list the owners and tract descriptions which have actually been consolidated. (Use reverse side of this form if necessary.) \_\_\_\_\_

No allowable will be assigned to the well until all interests have been consolidated (by communitization, unitization, forced-pooling, or otherwise) or until a non-standard unit, eliminating such interests, has been approved by the Commission.



## CERTIFICATION

I hereby certify that the information contained herein is true and complete to the best of my knowledge and belief.

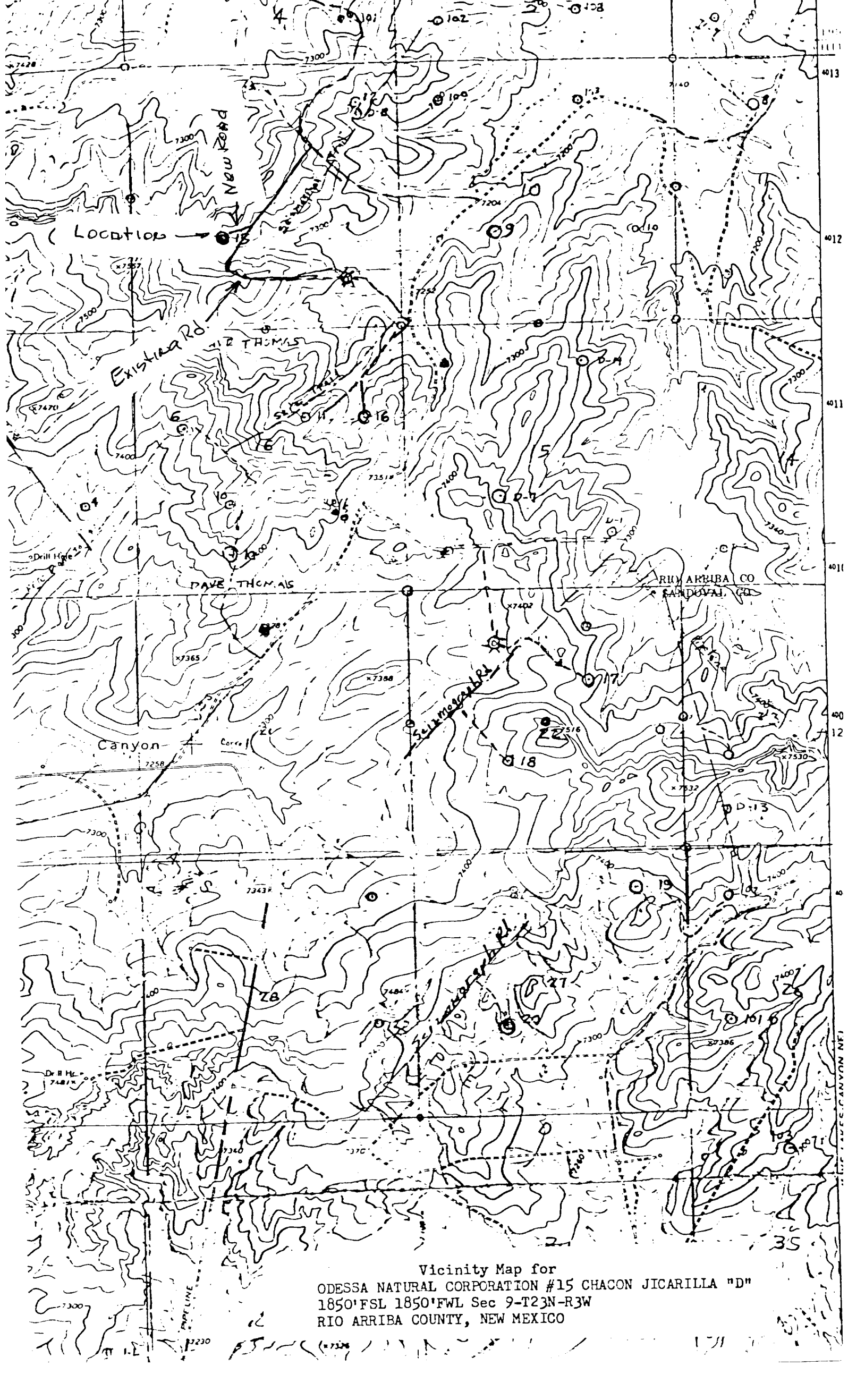
FOR: ODESSA NATURAL CORP.

Name **ORIGINAL SIGNED BY  
EWELL N. WALSH**Position  
**Ewell N. Walsh, P.E.**Company **Walsh Engr. & Prod. Corp.**Date  
**10/12/79**

I hereby certify that the well location shown on this plat was plotted from field notes of actual surveys made by me or under my supervision, and that the same is true and correct to the best of my knowledge and belief.

Date Surveyed

**October 11, 1979**Registered Professional Engineer  
and/or Land Surveyor**Fred B. Kerr, Jr.**Certificate No. **3950****FRED B. KERR, JR.**



Vicinity Map for  
ODESSA NATURAL CORPORATION #15 CHACON JICARILLA "D"  
1850'FSL 1850'FWL Sec 9-T23N-R3W  
RIO ARRIBA COUNTY, NEW MEXICO