

UNITED STATES  
DEPARTMENT OF THE INTERIOR  
GEOLOGICAL SURVEY

## APPLICATION FOR PERMIT TO DRILL, DEEPEN, OR PLUG BACK

## 1a. TYPE OF WORK

DRILL ☒DEEPEN ☐PLUG BACK ☐

## b. TYPE OF WELL

OIL  
WELL ☐GAS  
WELL ☒

OTHER

SINGLE  
ZONE ☒MULTIPLE  
ZONE ☐

## 2. NAME OF OPERATOR

BCO, Inc.

## 3. ADDRESS OF OPERATOR

135 Grant, Santa Fe, New Mexico 87501

## 4. LOCATION OF WELL (Report location clearly and in accordance with any State requirements.)

At surface 1750' FSL 790' FEL Sec. 3 T23N R7W

At proposed prod. zone  
Same

## 14. DISTANCE IN MILES AND DIRECTION FROM NEAREST TOWN OR POST OFFICE\*

Approximately 1-1/2 miles north of Lybrook, N.M.

## 15. DISTANCE FROM PROPOSED\*

LOCATION TO NEAREST  
PROPERTY OR LEASE LINE, FT.  
(Also to nearest drlg. unit line, if any)

790'

## 16. NO. OF ACRES IN LEASE

1086 more or less

17. NO. OF ACRES ASSIGNED  
TO THIS WELL

E 320- 312.53

18. DISTANCE FROM PROPOSED LOCATION\*  
TO NEAREST WELL, DRILLING, COMPLETED, TO BCO STATE  
OR APPLIED FOR, ON THIS LEASE, FT. H#3 well to be drilled in 1980.1980\*-crow fly  
to nearest well, drilling, completed, to BCO State  
6600' Dakota

## 20. ROTARY OR CABLE TOOLS

Rotary

## 21. ELEVATIONS (Show whether DF, RT, GR, etc.)

GR 6960

## 22. APPROX. DATE WORK WILL START\*

6-1-1980

## 23. PROPOSED CASING AND CEMENTING PROGRAM

SIZE OF HOLE	SIZE OF CASING	WEIGHT PER FOOT	SETTING DEPTH	QUANTITY OF CEMENT
12-1/4"	8-5/8" New	24.00#	<del>1/8</del> 200'	75 sacks
7-7/8"	4-1/2" New	11.6#	6600	250 sacks

As required by NTL-6 the following information is provided:

1. LOCATION -- See #4 & #11 above. Registered surveyors signed plat attached.
2. ELEVATION -- See #21 above.
3. SURFACE GEOLOGIC FORMATION -- Tertiary
4. TYPE OF DRILLING -- Rotary
5. PROPOSED DEPTH -- Before we reach the top of the Burro Canyon of the Dakota Formation -- approximately 6600'
6. ESTIMATED TOPS -- Pictured Cliffs 1940, Chacra 2735, Cliff House 3450, Point Lookout 4235, Gallup 5270, Greenhorn 6175, Dakota 6235
7. MINERAL BEARING -- It is anticipated water will be encountered from 100' below the surface to the base of the Ojo Alama at about 1530'. It is our anticipation oil and or gas will be found in the Chacra, Gallup, Greenhorn and Dakota. Other formation tops listed in 6 above will probably carry water. Operator intends to consider the possibility of co-mingling the Gallup and Greenhorn formations with the Dakota after the Dakota has been completed. A request to co-mingle these zones will be approved before we do it.

IN ABOVE SPACE DESCRIBE PROPOSED PROGRAM: If proposal is to deepen or plug back, give data on present productive zone and proposed new productive zone. If proposal is to drill or deepen directionally, give pertinent data on subsurface locations and measured and true vertical depths. Give blowout preventer program, if any.

24.

SIGNED

*Harry R. Byrd*

TITLE

President

DATE 4-25-80

(This space for Federal or State office use)

PERMIT NO.

APPROVAL DATE

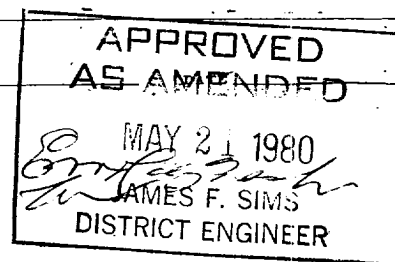
APPROVED BY

TITLE

CONDITIONS OF APPROVAL, IF ANY:

NMOCC

\*See Instructions On Reverse Side



**NEW MEXICO OIL CONSERVATION COMMISSION  
WELL LOCATION AND ACREAGE DEDICATION PLAT**

Form C-102  
Supersedes C-128  
Effective 1-1-65

All distances must be from the outer boundaries of the Section.

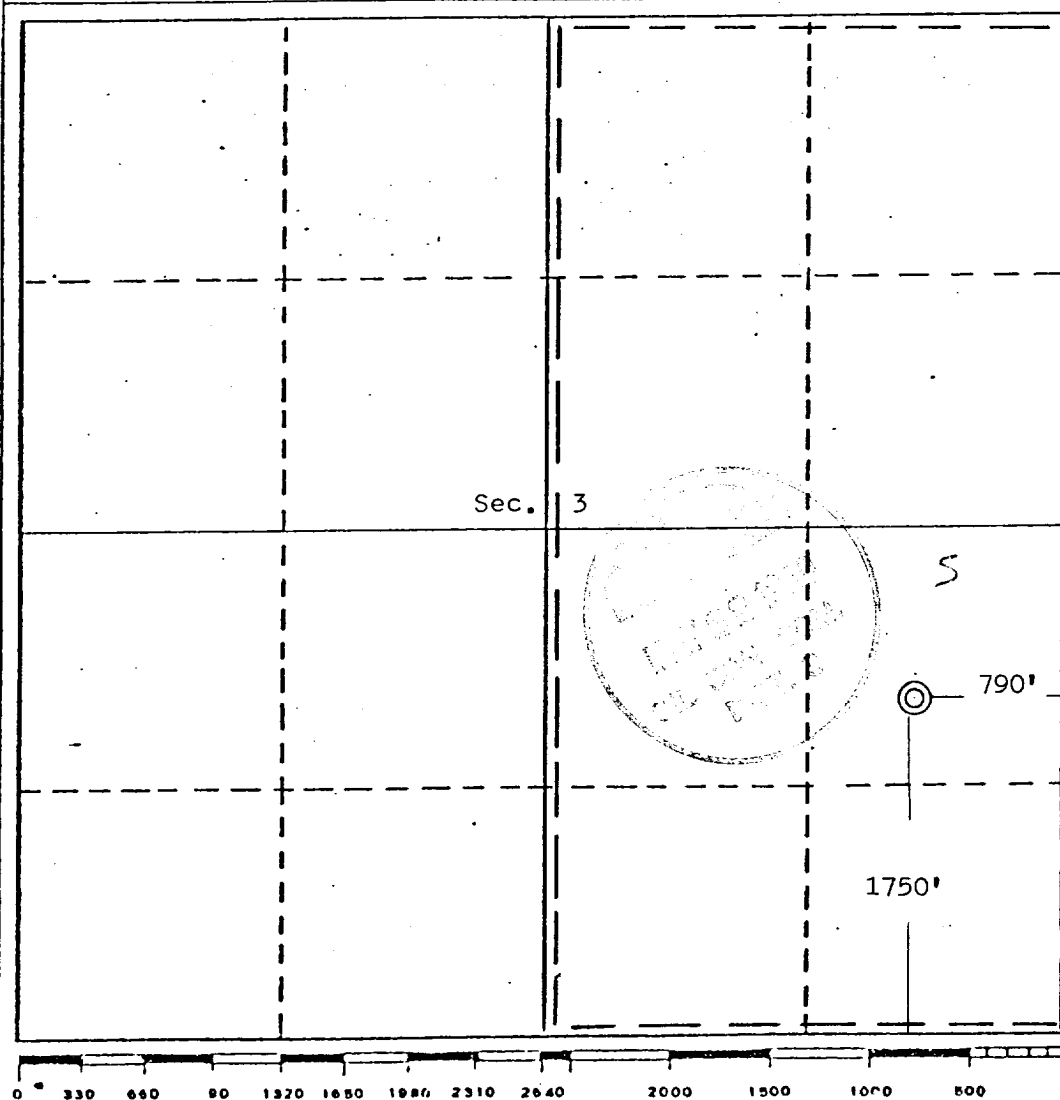
Operator <b>BCO, Inc.</b>		Lease <b>Dunn</b>		Well No. <b>3</b>
Unit Letter <b>1</b>	Section <b>3</b>	Township <b>23 North</b>	Range <b>7 West</b>	County <b>Rio Arriba</b>
Actual Footage Location of Well:				
<b>1750</b>	feet from the	<b>South</b>	line and	<b>790</b>
				feet from the
				<b>East</b>
				line
Ground Level Elev. <b>6960</b>	Producing Formation <b>Dakota</b>		Pool <b>Basin Dakota</b>	Dedicated Acreage: <b>E 320 312.53</b> Acres

1. Outline the acreage dedicated to the subject well by colored pencil or hachure marks on the plat below.
2. If more than one lease is dedicated to the well, outline each and identify the ownership thereof (both as to working interest and royalty).
3. If more than one lease of different ownership is dedicated to the well, have the interests of all owners been consolidated by communitization, unitization, force-pooling, etc?

☐ Yes    ☐ No    If answer is "yes," type of consolidation \_\_\_\_\_

If answer is "no," list the owners and tract descriptions which have actually been consolidated. (Use reverse side of this form if necessary.) \_\_\_\_\_

No allowable will be assigned to the well until all interests have been consolidated (by communitization, unitization, forced-pooling, or otherwise) or until a non-standard unit, eliminating such interests, has been approved by the Commission.



**CERTIFICATION**

I hereby certify that the information contained herein is true and complete to the best of my knowledge and belief.

*Harry R. Bigbee*  
Name

**Harry R. Bigbee**

Position  
**President**

Company  
**BCO, Inc.**

Date  
**4-25-80**

I hereby certify that the location shown on this plat was plotted from field notes of actual surveys made by me or under my supervision, and that the same is true and correct to the best of my knowledge and belief.

Date Surveyed  
**April 17, 1980**

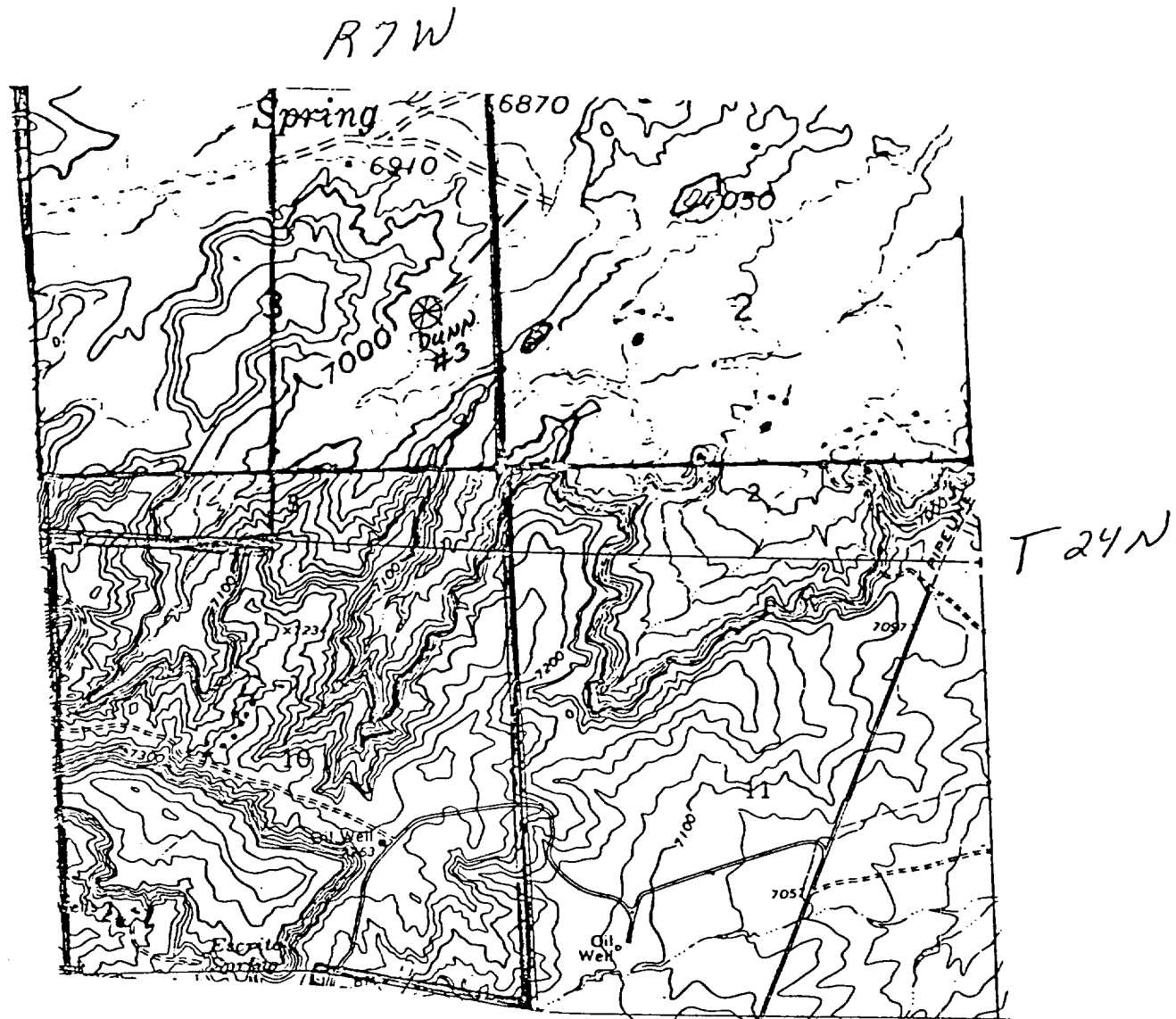
Registered Professional Engineer  
and/or Land Surveyor

*Edgar L. Risenhoover*  
Certificate No. **5979**  
**Edgar L. Risenhoover, L.S.**

Proposed Location

Dunn #3

Section 3 T23N R7W NMPM



⊗ Proposed location

--- PROPOSED ROAD &amp; GAS PIPELINE