

UNITED STATES
DEPARTMENT OF THE INTERIOR
GEOLOGICAL SURVEY

APPLICATION FOR PERMIT TO DRILL, DEEPEN, OR PLUG BACK

1a. TYPE OF WORK

DRILL ☒DEEPEN ☐PLUG BACK ☐

b. TYPE OF WELL

OIL
WELL ☒GAS
WELL ☐OTHER ☐SINGLE
ZONE ☐MULTIPLE
ZONE ☐

2. NAME OF OPERATOR

DAVE M. THOMAS, JR.

3. ADDRESS OF OPERATOR

P.O. Box 2026 Farmington, New Mexico 87401

4. LOCATION OF WELL (Report location clearly and in accordance with any State requirements.)*

At surface

1850'FNL, 1850'FEL

At proposed prod. zone

Same

14. DISTANCE IN MILES AND DIRECTION FROM NEAREST TOWN OR POST OFFICE*

32 miles Northwest of Cuba, New Mexico

15. DISTANCE FROM PROPOSED*

LOCATION TO NEAREST
PROPERTY OR LEASE LINE, FT.
(Also to nearest drlg. unit line, if any)

1850'

16. NO. OF ACRES IN LEASE

2240

17. NO. OF ACRES ASSIGNED
TO THIS WELL

160

18. DISTANCE FROM PROPOSED LOCATION*

TO NEAREST WELL, DRILLING, COMPLETED,
OR APPLIED FOR, ON THIS LEASE, FT.

1590'

19. PROPOSED DEPTH

7560'

20. ROTARY OR CABLE TOOLS

Rotary

21. ELEVATIONS (Show whether DF, RT, GR, etc.)

7211'GL, 7224'DF, 7161'KB

22. APPROX. DATE WORK WILL START*

November 30, 1980

23.

PROPOSED CASING AND CEMENTING PROGRAM

| SIZE OF HOLE | SIZE OF CASING | WEIGHT PER FOOT | SETTING DEPTH | QUANTITY OF CEMENT |
|--------------|----------------|-----------------|---------------|------------------------------|
| 12-1/4" | 8-5/8" | 24.0 | 250' | 250 sacks - to surface |
| 7-7/8" | 4-1/2" | 10.50 & 11.60 | 7630' | 320 sacks-130 sacks 2 stages |

This action is subject to administrative
appeal pursuant to 30 U.S.C.

All producing intervals in Dakota Formation will be perforated
and stimulated as necessary.

EXHIBITS:

"A" Location and Elevation Plat
"B" Ten Point Compliance Program
"C" Blowout Preventer Diagram
"D" Multi-Point Requirements for APD

"E" Access Road to Location
"F" Radius Map of Field
"G" Drill Rig Layout
"H" Fracturing Program Layout

The gas for this well is committed.

The NE/4, Section 11, is dedicated to this well.

IN ABOVE SPACE DESCRIBE PROPOSED PROGRAM: If proposal is to deepen or plug back, give data on present productive zone and proposed new productive zone. If proposal is to drill or deepen directionally, give pertinent data on subsurface locations and measurements and true vertical depths. Give blowout preventer program, if any.

24. FOR: DAVE M. THOMAS, JR.

President, Walsh Engr.

SIGNED

Ewell N. WALSH, P.E.

TITLE

& Production Corp.

DATE

9/25/80

(This space for Federal or State office use)

PERMIT NO.

APPROVAL DATE

APPROVED BY

TITLE

DATE

CONDITIONS OF APPROVAL, IF ANY:

for Bruce Wamley
JAMES F. SIMS
DISTRICT ENGINEER

*See Instructions On Reverse Side

All distances must be from the outer boundaries of the Section.

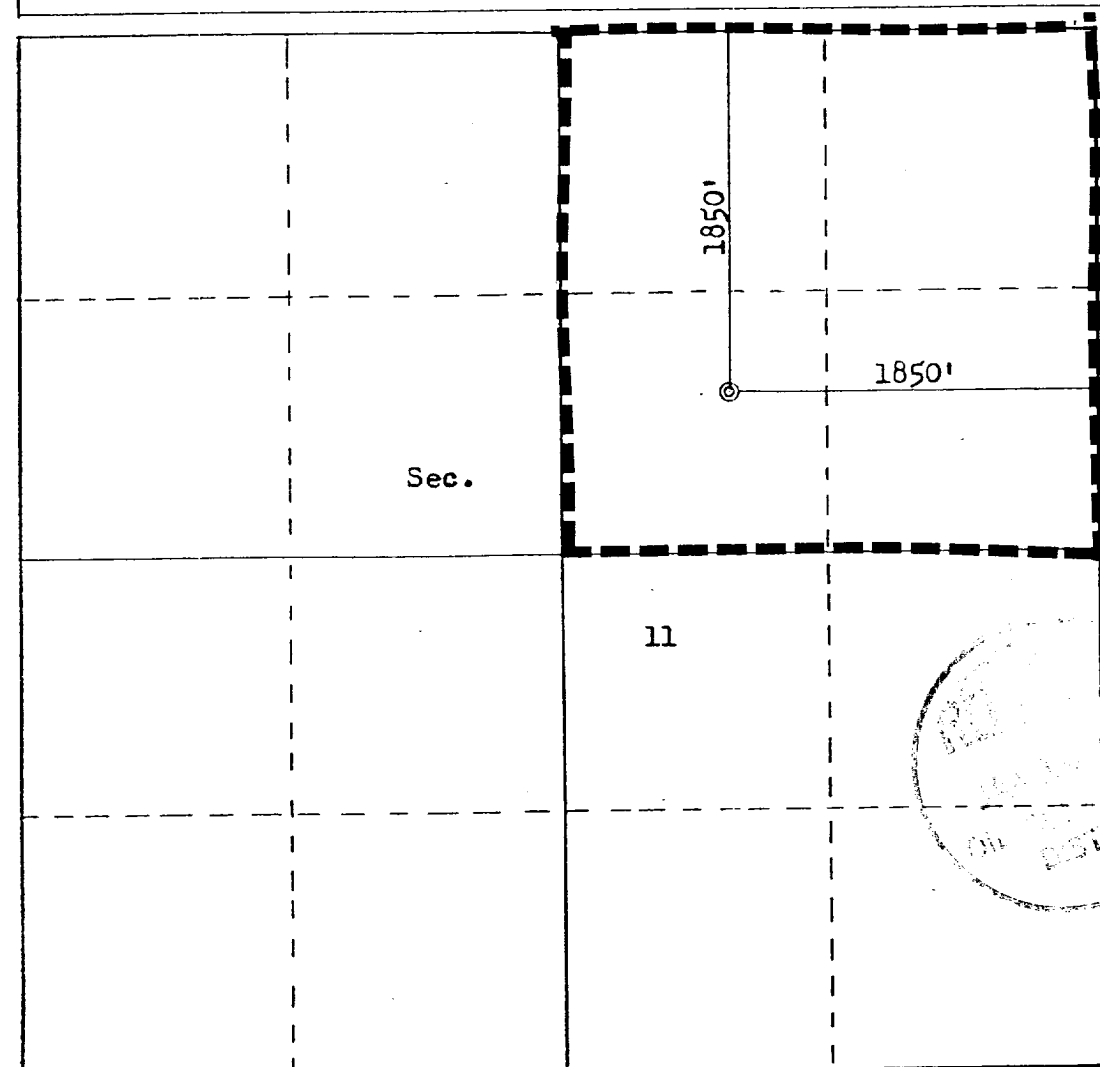
| | | | | | |
|--|--------------------------------------|------------------------|---|-----------------------------|--|
| Operator DAVE M. THOMAS JR. | | | Lease AMERADA JICARILLA | | Well No. 4 |
| Unit Letter G | Section 11 | Township 23N | Range 3W | County Rio Arriba | |
| Actual Footage Location of Well: 1850 feet from the North line and 1850 feet from the East line | | | | | |
| Ground Level Elev: 7211 | Producing Formation Dakota | | Pool Chacon Dakota Associated | | Dedicated Acreage: 160 Acres |

1. Outline the acreage dedicated to the subject well by colored pencil or hachure marks on the plat below.
2. If more than one lease is dedicated to the well, outline each and identify the ownership thereof (both as to working interest and royalty).
3. If more than one lease of different ownership is dedicated to the well, have the interests of all owners been consolidated by communitization, unitization, force-pooling, etc?

☐ Yes ☐ No If answer is "yes," type of consolidation _____

If answer is "no," list the owners and tract descriptions which have actually been consolidated. (Use reverse side of this form if necessary.) _____

No allowable will be assigned to the well until all interests have been consolidated (by communitization, unitization, forced-pooling, or otherwise) or until a non-standard unit, eliminating such interests, has been approved by the Commission.



Scale: 1"=1000'

| | |
|---|--------------------------------------|
| CERTIFICATION | |
| I hereby certify that the information contained herein is true and complete to the best of my knowledge and belief. | |
| FOR: DAVE M. THOMAS, JR. ORIGINAL SIGNED BY | |
| Name | EWELL N. WALSH |
| Ewell N. Walsh, P.E. | |
| Position | President |
| Company | Walsh Engr, & Prod. Corp. |
| Date | 9/25/80 |
| I hereby certify that the well location shown on this plat was plotted from field notes of actual surveys made by me or under my supervision, and that the same is true and correct to the best of my knowledge and belief. | |
| Date Surveyed | September 11, 1980 |
| Registered Professional Engineer and Land Surveyor | |
| Fred B. Baker Jr. | |
| Certificate No. | 3950 |

