

UNITED STATES
DEPARTMENT OF THE INTERIOR
GEOLOGICAL SURVEY

SUNDRY NOTICES AND REPORTS ON WELLS

(Do not use this form for proposals to drill or to deepen or plug back to a different reservoir. Use Form 9-331-C for such proposals.)

1. oil well ☒ gas well ☐ other ☐
2. NAME OF OPERATOR
Byron Oil Industries, Inc.
3. ADDRESS OF OPERATOR *80234*
2200 E. 104th Ave, Suite 217, Thornton, Colo.
4. LOCATION OF WELL (REPORT LOCATION CLEARLY. See space 17 below.)
AT SURFACE: *1050' FSL, 812' FEL*
AT TOP PROD. INTERVAL:
AT TOTAL DEPTH:

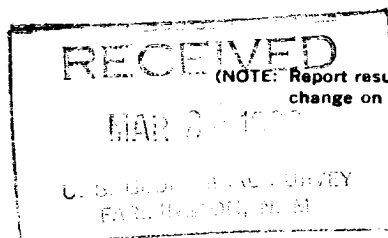
16. CHECK APPROPRIATE BOX TO INDICATE NATURE OF NOTICE, REPORT, OR OTHER DATA

REQUEST FOR APPROVAL TO:

- TEST WATER SHUT-OFF ☐
FRACTURE TREAT ☐
SHOOT OR ACIDIZE ☐
REPAIR WELL ☐
PULL OR ALTER CASING ☐
MULTIPLE COMPLETE ☐
CHANGE ZONES ☐
ABANDON* ☐
(other) ☐

SUBSEQUENT REPORT OF:

- ☐
☒
☒
☐
☐
☐
☐
☐
☐

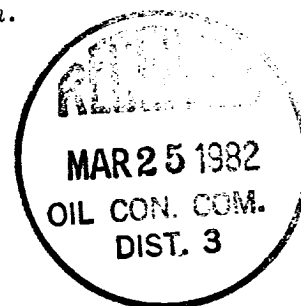


(NOTE: Report results of multiple completion or zone change on Form 9-330.)

17. DESCRIBE PROPOSED OR COMPLETED OPERATIONS (Clearly state all pertinent details, and give pertinent dates, including estimated date of starting any proposed work. If well is directionally drilled, give subsurface locations and measured and true vertical depths for all markers and zones pertinent to this work.)*

Attached please find the completion history for this well.

All perforating and Stimulation is outlined therein.



Subsurface Safety Valve: Manu. and Type

Set @ _____ Ft.

18. I hereby certify that the foregoing is true and correct

SIGNED *David W. Ellery* TITLE *Petroleum Engineer* DATE *3-19-82*

(This space for Federal or State office use)

APPROVED BY _____
CONDITIONS OF APPROVAL, IF ANY:

TITLE

DATE

ACCEPTED FOR RECORD

*See Instructions on Reverse Side

MAR 24 1982

FARMINGTON DISTRICT

BY *Sna*

Nmocc
ALBUQUERQUE COPY

COMPLETION HISTORY

- 1-21-82 MI & RU Action Well Service Rig #7. Install OCT 600 series tubing head and nipple up BOP. Receive 189 jts 2 3/8" 4.7# EUE tubing measuring 6032.82' overall length. RIH with 3 7/8" bit and bit sub (1.65') and 92 jts 2 3/8" tubing (2544.81'). SDFN.
- 1-22-82 Continued in hole with 59 jts and with 142 jts in tag cement at 4539' KB. Drilling 65' of cement and tag DV tool at 4603.80' KB. Drilling DV tool in 3/4 hr. Circulate hole clean. Continue in hole with 41 jts and tag cement at 5815' KB. Drilling out to 5865' KB. Circulate hole clean. Test casing to 3500 psi, 5 min, no bleed off. Roll hole to 2% KCL water. POOH. SDFN.
- 1-23-82 Rig up Blue Jet, Inc and CBL-gamma ray correlation log PBTD to 5150'. Ran under 800 psi casing pressure. Bond satisfactory. TOC 310' from surface. RIH with 182 jts to 5787' and swabbed fluid level down to 4500'. SDFN.
- 1-24-82 Sunday-Crew off
- 1-25-82 POOH. Rig up Blue Jet and perforate lower Gallup 1 shot at the following depths. 5578, 5605, 06, 07, 08, 09, 10, 11, 12, 13, 14, 15, 49, 54, 58, 59, 60, and 61. Total of 18 holes. RIH with Baker Retrievmatic packer and 178 jts tubing and set at 5516' KB. Rig up Western and acidize with 750 gallons 15% HCL with clay stabilizer and iron sequestering agent and 35 balls, and flushed with 2% KCL water. Good ball action but no ball off. AIR 6.5 bpm at 2500 psi. ISIP 2000 psi, 15 min SIP 600 psi. Total LW 45 bbls. Bled pressure and well flowed back 1/2 hr an estimated 10 bbls. Released packer and lowered same through peris. POOH. Ready to frack in the a.m. SIFN.
- 1-26-82 SICP 100 psi. Rig up Western and frack with 53,130 gallons Mini Max III-40, all 2% KCL base with 2 gal/1000 gal Aqua Flow and 1 gal/1000 gal Aquaseal, and 1 1/2 gal/1000 gal Claymaster III, 400 SCFPB CO₂, 69000# 20/40 sand and 23000# 10/20 sand. AIR 25 bpm fluid and 6 bpm CO₂ at avg trt pressure 1800 psi. ISIP 900 psi, 15 min STP 800 psi. 4 hr SIP 600 psi. Left SI 4 hrs for gel to break. Open through 3/4" choke, unloading good after 2 hrs. Left open on 3/4" choke overnight. Total LW to recover 1265 bbls.
- 1-27-82 Well was flowing on arrival at 75 psi, unloading load water and CO₂. 1st oil cut at 11 a.m. Turned through frack tank, 1st hr 10 BF @ 10% oil cut, 2nd hour 10 BF at 15% oil cut, 3rd hr, 12 BF @ 30% oil cut. FCP 75 psi. Very little gas. Rig up Blue Jet and set Baker retrievable bridge plug at 5540' KB. Pull setting tool to 5464' and hung up. Work to free 1 hr and failed. Pull out of rope socket. SDFN.
- 1-28-82 RIH with Bowen overshot and 170 jts tubing and tag tool at 5526' KB. Reverse circulate and would pressure up to 1000 psi. Circulate conventional OK. POOH with fish. Pressure test casing 3500 psi, 5 min, OK. Dump 7 gallons sand on BP wait 3/4 hr to settle. RIH with 177 jts tubing and place EOT at 5502' KB. Spot 350 gallons 15% HCL, double inhibited. POOH 10 stands to place EOT at 4867' KB

Byron Oil Co., Inc.
Dunn Federal #2
SESE Section 4, T23N, R7W
Rio Arriba County, New Mexico

Elledge Consulting & Production Company

COMPLETION HISTORY CONTINUED

and SN at 4835' KB. Swab fluid level down to 3500'. SDFN.

1-29-82

POOH. Rig up Blue Jet and perforate Upper Gallup 1 shot at the following depths: 5276-79, 5457-85, 86, 87, 88, 89, 90, 91, 92, 93, 94, 95, 96, 97, 98, 99, 5513, and 14. Total of 20 holes. RIH with Baker Retrievalmatic packer and 164 jts tubing and set at 5223' KB. Rig up Western and acidize with 750 gallons 15% HCL and 35 balls. Good ball action and balled off to 3700 psi with 2 BA left in casing. Avg trt pressure 1400 psi @ 3½ bpm. Release pressure and put remaining acid away. ISIP 600 psi, 5 min SIP 600 psi. Release packer and lowered through perforations. POOH with packer. Frack down casing with 32,762 gallons Mini Max III-40 and 37,890# 20/40 sand and 17,682# 10/20 sand, and 600 SCFPB CO₂. Avg trt pressure 1800 psi. Load water to be recovered 825 bbls. Left SI 4 hrs for gel to break. Open on 3/4" positive choke at 7 p.m. Unloading good to pit. Left night watchman on duty.

1-30-82

After 12½ hrs through 3/4" choke, flowing at 25 psi to pit, frack water, traces of oil, and gas. Turned to frack tank. In 7 hrs ending at 3 p.m. Flowed 18 BF with final oil cut 6%, gas rate estimated at 600 MCFPD. Final flowing CP 30 psi. SI for weekend.

1-31-82

Sunday-Crew off

2-1-82

41 hr SICP 800 psi. Open to pit and bled down gas only to 50 psi in 1 hr. Rig up Western and pump in 82 bbls 2% KCL water to kill well. RIH with hydrostatic bailer and tag sand fill at 5515' KB with 175 jts. CO to 5540' KB and tag BP. POOH and dump sand. RIH with retrieving head and latch onto BP. POOH with BP. SDFN.

2-2-82

SICP zero. RIH with 173 jts tubing with SN 1 jt up and set at 5502' KB with SN at 5470' KB. Ran swab IFL 2000'. Made 17 runs in 4½ hrs and recovered 130 BLW with trace of oil and gas. FFL 2800'. Well kicked off flowing at 4:30 p.m. In 1 hr flowed 10 BLW and 3% Oil. Still not real gassy. Total fluid for day 140 BLW. Estimate 1275 BLW yet to be recovered. SIFN.

2-3-82

SICP 625 psi, SITP 690 psi. Open to pit and flowed gas for 45 min and died. Ran swab IFL 2400'. Made 4 runs in 1½ hrs from 5470' and well kicked off flowing. Flowed 7½ hrs on 3/4" choke, FTP 100, FCP 600, recovered total of 129 BF, 1% to 25% oil cut. Last 2 hrs, fluid rate 12½ bph with final oil cut 25%. Left well flowing to frack tank overnight.

2-4-82

Well flowing on arrival. Flowed well all day. In 22 hrs ending at 3 p.m. Flowed 55 BO and 60 BLW on 3/4" choke, FCP 350 psi, FTP 65 psi. Est 500 MCFPD gas. Left well flowing overnight. Weather bad. Will button up tomorrow.

2-5-82

In 14 hrs ending at 8 a.m., flowed 20 BO and 14 BLW, FTP 50 psi, FCP 270 psi. Est 500 MCFPD gas. Pumped in 20 bbls 2% KCL water down tubing, lowered tubing 20 jts and tag fill at 5810' KB. Loaded 179 jts tubing with SN 1 jt up at 5697' KB (thru all perfs)

Byron , Inc.
Dunn Federal #2
SESE Section 4, T23N, R7W
Rio Arriba County, New Mexico

Elledge Consulting & Production Company

COMPLETION HISTORY CONTINUED

SN at 5664' KB. Nipple down BOP and nipple up tree. Ran swab, paraffin bad in upper 300' of tubing. Heated some oil and worked paraffin out with sinkerbars. Made 2 runs from SN and well kicked off flowing. Left flowing overnight to track tank. 10 jts left on location.

2-6-82

In 14 hrs, flow 25 BO and 30 BLW, FCP 255 psi, FTP 65 psi, 3/4" choke. EST 1153 BLW yet to be recovered. Left well SI. Final Report.