

UNITED STATES
DEPARTMENT OF THE INTERIOR
GEOLOGICAL SURVEY

SUBMIT IN TRIPLICATE*

Form approved.
Budget Bureau No. 42-R1425.

APPLICATION FOR PERMIT TO DRILL, DEEPEN, PLUG, BACK

1a. TYPE OF WORK
DRILL ☒ DEEPEN ☐ OIL CON. COM. ☐ DIST. BACK ☐

b. TYPE OF WELL
OIL WELL ☒ GAS WELL ☐ OTHER ☐ SINGLE ZONE ☐ MULTIPLE ZONE ☐

2. NAME OF OPERATOR

Kenai Oil & Gas Inc. 2000 Energy Center One 717 17th St.

3. ADDRESS OF OPERATOR

4. LOCATION OF WELL (Report location clearly and in accordance with any State requirements.)*
At surface

1650' FSL and 1650' FEL

At proposed prod. zone

14. DISTANCE IN MILES AND DIRECTION FROM NEAREST TOWN OR POST OFFICE*

4 miles-Bloomfield, New Mexico

15. DISTANCE FROM PROPOSED* LOCATION TO NEAREST PROPERTY OR LEASE LINE, FT.
(Also to nearest drilg. unit line, if any.) 1650'

18. DISTANCE FROM PROPOSED LOCATION* TO NEAREST WELL, DRILLING, COMPLETED, OR APPLIED FOR, ON THIS LEASE, FT. 1310'

21. ELEVATIONS (Show whether DF, RT, GR, etc.)

6092' GL

23. PROPOSED CASING AND CEMENTING PROGRAM

SIZE OF HOLE	SIZE OF CASING	WEIGHT PER FOOT	SETTING DEPTH	QUANTITY OF CEMENT
12 1/4"	8 5/8"	24#	250'	250 SX-Circulate
8 7/8"	5 1/2"	15.5#	5700'	1100SX-Cover AJO Alamo

Selectively test, perforate, and sandwater fracture the Gallup formation. A 3000 psi wp and good psi test double gate preventer with blind and pipe rams will be used for blowout prevention. The NWSE of section 6 is dedicated to this well.

This action is subject to administrative appeal pursuant to 30 CFR 290.

IN ABOVE SPACE DESCRIBE PROPOSED PROGRAM: If proposal is to deepen or plug back, give data on present productive zone and proposed new productive zone. If proposal is to drill or deepen directionally, give pertinent data on subsurface locations and measured and true vertical depths. Give blowout preventer program, if any.

24. SIGNED Raymond W. Vinyard TITLE District Engineer DATE 9-18-81

(This space for Federal or State office use)

PERMIT NO. APPROVAL DATE
(Orig. Sgd.) RAYMOND W. VINYARD
APPROVED BY: TITLE ACTING DISTRICT SUPERVISOR DATE DEC 11 1981

CONDITIONS OF APPROVAL, IF ANY:

NMOCC

NEW MEXICO OIL CONSERVATION COMMISSION
WELL LOCATION AND ACREAGE DEDICATION PLAT

Form C-102
Supersedes C-128
Effective 1-1-65

All distances must be from the outer boundaries of the Section.

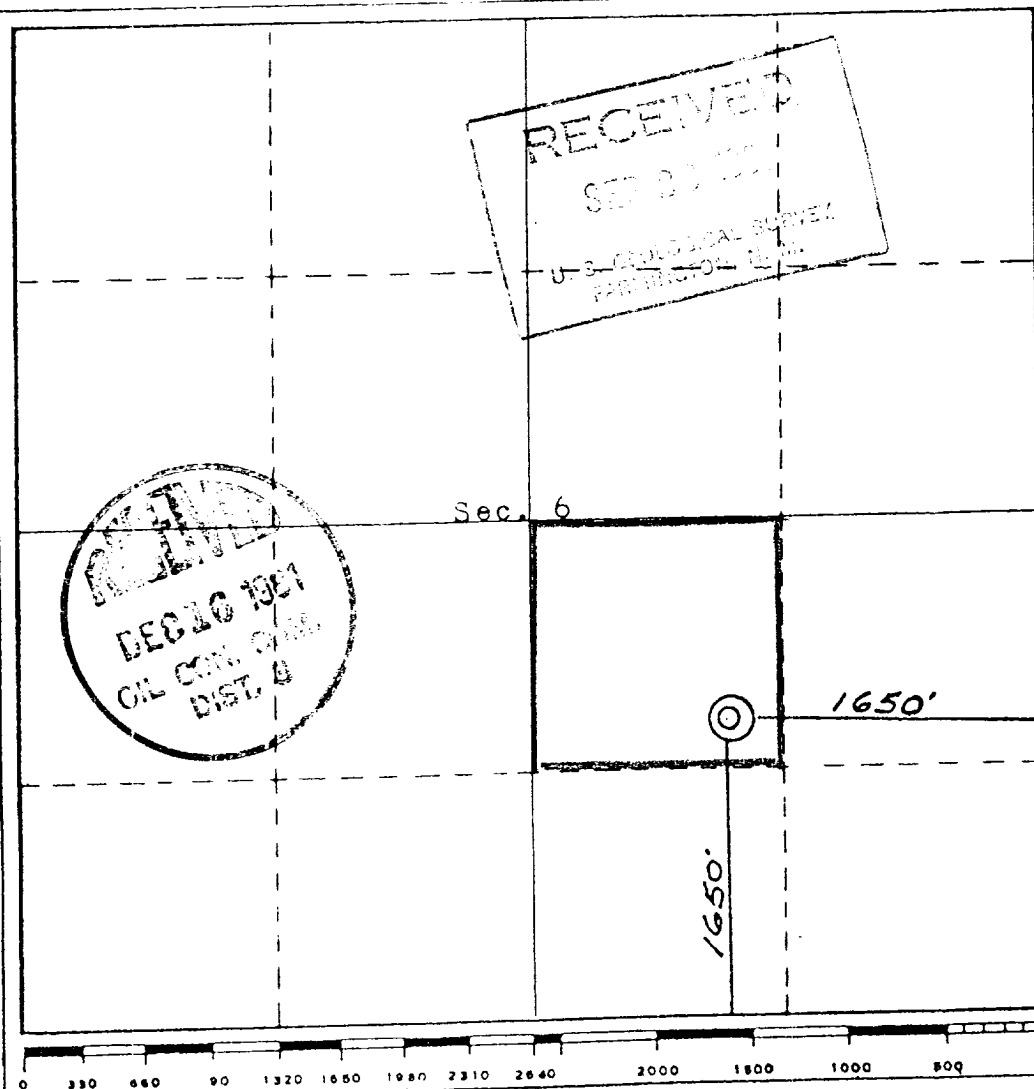
Operator KENAI OIL & GAS INC.			Lease FEDERAL 6		Well No. 33
Unit Letter J	Section 6	Township 23 NORTH	Range 7 WEST	County RIO ARriba	
Actual Footage Location of Well: 1650 feet from the SOUTH line and 1650 feet from the EAST line					
Ground Level Elev. 6992	Producing Formation GALLUP		Pool Lybrook - Gallup WEST LYBROOK UNIT Ext.		Dedicated Acreage: 40 Acres

1. Outline the acreage dedicated to the subject well by colored pencil or hachure marks on the plat below.
2. If more than one lease is dedicated to the well, outline each and identify the ownership thereof (both as to working interest and royalty).
3. If more than one lease of different ownership is dedicated to the well, have the interests of all owners been consolidated by communitization, unitization, force-pooling, etc?

☐ Yes ☐ No If answer is "yes," type of consolidation _____

If answer is "no," list the owners and tract descriptions which have actually been consolidated. (Use reverse side of this form if necessary.) _____

No allowable will be assigned to the well until all interests have been consolidated (by communitization, unitization, forced-pooling, or otherwise) or until a non-standard unit, eliminating such interests, has been approved by the Commission.



CERTIFICATION

I hereby certify that the information contained herein is true and complete to the best of my knowledge and belief.

Name
David P. Howell
Position
District Engineer
Company
Kenai Oil and Gas Inc.
Date
9-16-81

I hereby certify that the well location shown on this plat was plotted from field notes of actual surveys made by me or under my supervision, and that the same is true and correct to the best of my knowledge and belief.

5 AUGUST 1981
Date Surveyed
REGISTERED LAND SURVEYOR
NEW MEXICO
REGISTERED PROFESSIONAL ENGINEER
AND/OR LAND SURVEYOR
CUBA C. STUKING
Certificate No. **5489 NMES**

