

HPL CORRECTION 10 → 30-039-22882

Form 9-331 C  
(May 1963)

SUBMIT IN TRIPPLICATE\*

Form approved.  
Budget Bureau No. 42-R1425.

UNITED STATES  
DEPARTMENT OF THE INTERIOR  
GEOLOGICAL SURVEY

from (Other instructions on reverse side)

30-039-2286

## APPLICATION FOR PERMIT TO DRILL, DEEPEN, OR PLUG BACK

## 1a. TYPE OF WORK

DRILL ☒DEEPEN ☐PLUG BACK ☐

## b. TYPE OF WELL

OIL WELL ☒GAS WELL ☐

OTHER

SINGLE ZONE ☒MULTIPLE ZONE ☐

## 2. NAME OF OPERATOR

Byron Oil Industries, Inc.

## 3. ADDRESS OF OPERATOR

P. O. Box 33478-Northglenn, Colorado 80233

## 4. LOCATION OF WELL (Report location clearly and in accordance with any State requirements.)\*

At surface

686' FSL, 1806 FWL

At proposed prod. zone

Same

## 14. DISTANCE IN MILES AND DIRECTION FROM NEAREST TOWN OR POST OFFICE\*

3 miles North of Lybrook, New Mexico

## 15. DISTANCE FROM PROPOSED\*

LOCATION TO NEAREST

PROPERTY OR LEASE LINE, FT.

(Also to nearest drlg. unit line, if any)

## 18. DISTANCE FROM PROPOSED LOCATION\*

TO NEAREST WELL, DRILLING, COMPLETED, OR APPLIED FOR, ON THIS LEASE, FT.

 $\frac{1}{4}$  mile NW

## 16. NO. OF ACRES IN LEASE

160

## 19. PROPOSED DEPTH

5900

## 17. NO. OF ACRES ASSIGNED TO THIS WELL

40

## 20. ROTARY OR CABLE TOOLS

Rotary

## 21. ELEVATIONS (Show whether DF, RT, GR, etc.)

7044 GR

## 22. APPROX. DATE WORK WILL START\*

11-1-81

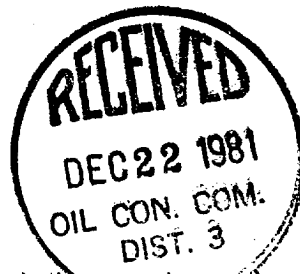
## 23.

## PROPOSED CASING AND CEMENTING PROGRAM

SIZE OF HOLE	SIZE OF CASING	WEIGHT PER FOOT	SETTING DEPTH	QUANTITY OF CEMENT
12 $\frac{1}{2}$	8 5/8	32#	250	150 sx
7 7/8	4 $\frac{1}{2}$	10.5#	5900	2 stage-circ to surface

A 5900' Gallup test will be drilled, and if indicated productive, 4 $\frac{1}{2}$ " 10.5# ST&C casing will be set. The pay will be selectively perforated, fracked, and tested.

Grace Petroleum buys the already existing casinghead gas production on this lease.



IN ABOVE SPACE DESCRIBE PROPOSED PROGRAM: If proposal is to deepen or plug back, give data on present productive zone and proposed new productive zone. If proposal is to drill or deepen directionally, give pertinent data on subsurface locations and measured and true vertical depths. Give blowout preventer program, if any.

## 24.

SIGNED

Harold W. Ellledge

TITLE

Agent

DATE

10-20-81

(This space for Federal or State office use)

PERMIT NO.

APPROVAL DATE

APPROVED BY

CONDITIONS OF APPROVAL, IF ANY:

TITLE

DATE

12-18-81

\*See Instructions On Reverse Side

NMCC

**NEW MEXICO OIL CONSERVATION COMMISSION  
WELL LOCATION AND ACREAGE DEDICATION PLAT**

Form C-102  
Supersedes C-128  
Effective 1-1-65

All distances must be from the outer boundaries of the Section.

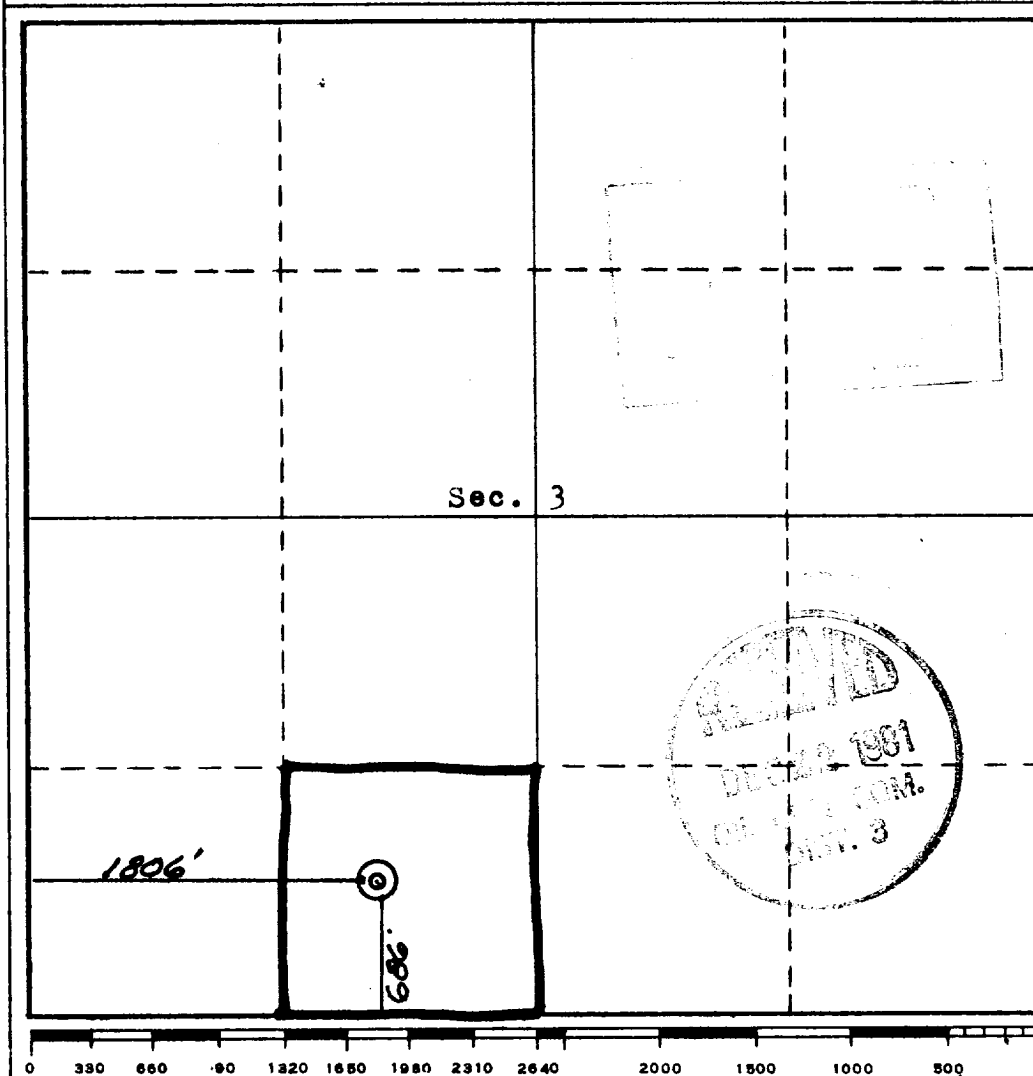
Operator <b>BYRON OIL INDUSTRIES, INC.</b>			Lease <b>HANSON FEDERAL</b>		Well No. <b>2</b>
Unit Letter <b>N</b>	Section <b>3</b>	Township <b>23 NORTH</b>	Range <b>7 WEST</b>	County <b>RIO ARriba</b>	
Actual Footage Location of Well: <b>686</b> feet from the <b>SOUTH</b> line and <b>1806</b> feet from the <b>WEST</b> line					
Ground Level Elev. <b>7044</b>	Producing Formation <b>GALLUP</b>		Pool <b>LYBROOK</b>	Dedicated Acreage: <b>40</b> Acres	

1. Outline the acreage dedicated to the subject well by colored pencil or hachure marks on the plat below.
2. If more than one lease is dedicated to the well, outline each and identify the ownership thereof (both as to working interest and royalty).
3. If more than one lease of different ownership is dedicated to the well, have the interests of all owners been consolidated by communitization, unitization, force-pooling, etc?

☐ Yes ☐ No If answer is "yes," type of consolidation \_\_\_\_\_

If answer is "no," list the owners and tract descriptions which have actually been consolidated. (Use reverse side of this form if necessary.) \_\_\_\_\_

No allowable will be assigned to the well until all interests have been consolidated (by communitization, unitization, forced-pooling, or otherwise) or until a non-standard unit, eliminating such interests, has been approved by the Commission.



**CERTIFICATION**

I hereby certify that the information contained herein is true and complete to the best of my knowledge and belief.

Name Llewellyn W. Elledge  
Position Agent  
Company Byron Oil Industries Inc  
Date 10-20-81

I hereby certify that the well location shown on this plat was plotted from field notes of actual surveys made by me or under my supervision, and that the same is true and correct to the best of my knowledge and belief.

**NEW MEXICO**  
**REGISTERED LAND SURVEYOR**  
Date Surveyed 11/14/81  
Curtis C. Stocking  
Registered Professional Engineer  
and/or Land Surveyor  
**CURTIS C. STOCKING**  
Certificate No. 5980