

UNITED STATES
DEPARTMENT OF THE INTERIOR
GEOLOGICAL SURVEY

SUNDRY NOTICES AND REPORTS ON WELLS

(Do not use this form for proposals to drill or to deepen or plug back to a different reservoir. Use Form 9-331-C for such proposals.)

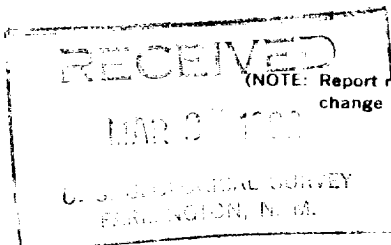
1. oil well ☒ gas well ☐ other ☐
2. NAME OF OPERATOR
Byron Oil Industries, Inc.
3. ADDRESS OF OPERATOR 80234
2200 E. 104th Ave, Suite 217, Thornton, Colo.
4. LOCATION OF WELL (REPORT LOCATION CLEARLY. See space 17 below.)
AT SURFACE: 686' FSL, 1806' FWL
AT TOP PROD. INTERVAL:
AT TOTAL DEPTH:
16. CHECK APPROPRIATE BOX TO INDICATE NATURE OF NOTICE, REPORT, OR OTHER DATA

REQUEST FOR APPROVAL TO:

- TEST WATER SHUT-OFF ☐
FRACTURE TREAT ☐
SHOOT OR ACIDIZE ☐
REPAIR WELL ☐
PULL OR ALTER CASING ☐
MULTIPLE COMPLETE ☐
CHANGE ZONES ☐
ABANDON* ☐
(other) ☐

SUBSEQUENT REPORT OF:

- ☐
☒
☒
☐
☐
☐
☐
☐
☐



(NOTE: Report results of multiple completion or zone change on Form 9-330.)

17. DESCRIBE PROPOSED OR COMPLETED OPERATIONS (Clearly state all pertinent details; and give pertinent dates, including estimated date of starting any proposed work. If well is directionally drilled, give subsurface locations and measured and true vertical depths for all markers and zones pertinent to this work.)*

Attached please find the completion history for this well. All perforating and stimulation is outlined therein.

Subsurface Safety Valve: Manu. and Type

Set (w)

Ft.

18. I hereby certify that the foregoing is true and correct

SIGNED

Lawrence E. Elledge

TITLE Petroleum Engineer

DATE

3-19-82

(This space for Federal or State office use)

APPROVED BY

CONDITIONS OF APPROVAL, IF ANY:

TITLE

DATE

ACCEPTED FOR RECORD

MAR 24 1982

NMOCC

FARMINGTON DISTRICT

BY

Shm

Byron Oil Field, Inc.
Hanson Federal #2
Section 3, T23N, R7W
Rio Arriba County, New Mexico

Elledge Consulting & Production Company

COMPLETION HISTORY

- 2-6-82 MI & RU Action Well Service Rig #7 with help of dozer.
- 2-7-82 Sunday-Crew off
- 2-8-82 Install OCT tubinghead, would not pressure test. 183 jts (5861.95') 2 3/8" tubing. RIH 3 7/8" bit, sub, 140 jts tubing and tag cement at 4505' KB. SDFN. Will try new tubinghead tomorrow.
- 2-9-82 Rig up circulating equipment and drill cement 4505 to 4574' and drill DV tool in 3/4 hr. Continue in hole and drill cement from 5702' to PBTD of 5754' KB. Circulate hole clean. Laid down 1 jt and pick up BOP and tubinghead. Repacked seal assembly, pressure tested to 1500 psi, held OK. With Western, pressure tested casing to 3500 psi, 5 min, OK. Rolled hole to 2% KCL water. Pulled 10 stands tubing and SDFN.
- 2-10-82 Finish POOH. Rig up Blue Jet Inc to run CBL-VDL and gamma ray correlation log. Had tool trouble and truck panel trouble from 9:15 to 3:15. SD. Will have different truck in the a.m.
- 2-11-82 Rig up Blue Jet and ran CBL-VDL from 5743' to 100'. Satisfactory bond. Top of cement 497'. Ran gamma ray correlation log. RIH with 178 jts tubing to 5708' KB with SN at 5679'. Swab fluid level down to 4500'. SDFN.
- 2-12-82 POOH. Rig up Blue Jet and perforate lower Gallup 1 shot at 5488, 5516, 17, 18, 19, 20, 21, 22, 23, 24, 25, 26, 34, 58, 67, 68, 69, 87, 5625, 33. Total of 20 holes. No reaction after perforating. RIH with Baker retrievematic packer and 169 jts tubing and set packer at 5426' KB. Rig up Western and acidize with 750 gallons 15% HCL with clay stabilizer and iron sequestering agent and 35 balls. No ball off but good ball action. AIR 4 bpm at Avg trt pressure 2100 psi. ISIP 750 psi, 10 min SIP 600 psi. Total LW 66 bbls. Open well to pit and flowed back for 45 min, water only. Release packer and ran in hole 5 stands to knock balls off perfs. POOH with packer.
- 2-13-82 SICP 75 psi. Rig up Western to frac lower Gallup perfs at 5488-5516, 17, 18, 19, 20, 21, 22, 23, 24, 25, 26, 34, 58, 67, 68, 69, 87, 5625, and 33 for total of 20 holes. Frac with 46,000 gal Mini-Max III-40#/2% HC Phase and 400 SCF/bbl CO₂ 69,000# 20/40 sand and 23,000# 10/20 sand. Fluid contained 2% KCL 1/2 gal/1000 Claymaster III, 1 gal/1000 Aquaflo, 1 gal/1000 Frac Cide I. Pumped 9,200 gal pad 25 bpm & 5 bpm CO₂ at 2000 psi. 9,200 gal with 1.5 ppg 20/40 24 bpm and 5 bpm CO₂ at 1900 psi. 9,200 gal with 2.5 ppg 20/40 24 bpm and 5 bpm CO₂ at 1800 psi. 9,200 gal with 3.5 ppg 20/40 24 bpm and 5 bpm CO₂ at 1600 psi. 9,200 gal with 2.5 ppg 10/20 25 bpm and 5 bpm CO₂ at 1500 psi. Flushed with 3,642 gal 2% KCL water 32 bpm at 1900 psi- ISIP 1000, 5 min 1000, 15 min 950. SI. Total fluid pumped 1182 bbls. Waited 4 hrs, 750 psi. 3:00 p.m. opened through 3/4" choke to pit. 1 hr 500 psi. Left open with watchman.
- 2-14-82 At 7 a.m. FCP 40 psi on 3/4" choke unloading all water. Turned thru tank at 7 a.m. In 9 hrs ending at 4 p.m. Flowed 31.57 BF. Watchman

5488-5633

COMPLETION HISTORY CONTINUED

did not take out but is making some oil. Left open to tank overnight with night watchman. FCP 40 psi-slightly gassy.

2-15-82

Well dried up at 4:00 a.m. 2-15-82. Flowed 37 hours. Made 15 BO, 45 BLW in frac tank. Last 12 hr-50% oil. Blue Jet wrecked their truck on icy roads and waited on another 4 hours. Set Baker wireline-set retrievable bridge plug at 5450' KB. Western filled casing with 2% KCL water and pressure tested to 3500 psi. Held for 5 min with no bleed off. Ran 169 2 3/8" tubing (5416.48') with standard seating nipple one jt from bottom (1.00) (5417.48'). Set at 5425 KB and spotted 350 gal 15% HCL containing 1/2 gal/1000 Claymaster III, 1 gal/1000 Iron Sequester and double inhib. Pulled 10 1/2 stands to 4700 and swab well down to 3000'. SIFN.

2-16-82

Swab well down from 3000' to 4000' and POOH. Rig up Blue Jet and perf 1 SPF 5366-95, 96, 97, 98, 99, 5400, 01, 02, 02, 04, 05, 06, 07, 08, 09, 22, 23, and 24, total of 19 holes. T1H with Baker 4 1/2" retrievematic and set at 5270' KB. Tool-6' and 164 jts 2 3/8" tubing (5253.65'). Pumped 750 gal 15% HCL acid with 1/2 gal/1000 Claymaster III and 1 gal/1000 Iron Sequester with 35 ball sealers. Pumped 6 bpm at 500 psi when acid ht. Saw very little ball action. Finish flush at 6 bpm at 800 psi. ISIP-300 psi, 5 min 100 psi, 10 min 0 psi. Release packer and ran 5 jts tubing to knock balls off. POOH to frac. SIFN.

2-17-82

SICP 160 psi. Rig up Western to frac upper Gallup with 34,000 gal Mini-Max III-40/2% HC phase and 37,560# 20/40 sand and 17,400# 10/20 sand fluid contained 2% KCL, 1/2 gal/1000 Claymaster III, 1 gal/1000 Aquaflow, 1 gal/1000 Frac Cide I and 600 scf/bbl CO₂.

Pumped 8,420 gal Pad 21 bpm and 4 bpm CO₂ at 1600 psi.
5,052 gal with 1.5 ppg 20/40 21 bpm and 4 bpm CO₂ at 1650 psi.
5,052 gal with 2.5 ppg 20/40 21 bpm and 4 bpm CO₂ at 1700 psi.
5,052 gal with 3.5 ppg 20/40 21 bpm and 4 bpm CO₂ at 1750 psi.
5,052 gal with 3.5 ppg 10/20 21 bpm and 4 bpm CO₂ at 1800 psi.
3,000 gal flush 2% KCL water 24 bpm and 4 bpm CO₂ at 2050 psi.
ISIP 1250, 5 min 1200, 15 min 1150. Shut in for 4 hrs. 881 bbls total fluid. 28,000 SCF CO₂. Had 475 psi after 4 hrs. Opened to pit to flow back. Left with dry watchman.

2-18-82

Well unloaded good for 6 hrs and was down to 20 psi through 3/4" choke with slight trace of oil. After 9 hrs was down to 10 psi, all gas. Shut in at 12 midnight. SICP at 7.30 a.m., 600 psi. Opened to pit and after 2 hrs was flowing gas at 360 MCF/day. RIH with Baker Hydrostatic bailer and tagged sand at 5420' KB with 169 jts (5416.48') CO sand to 5450' KB. Latch onto BP and POOH with BP and backside unloaded gas and oil. Well flowed into tank at rate of 3.5 BPH and 350 MCF/day while POOH. SIFN. Will have to give quick kill to RIH with tubing.

2-19-82

SICP 700 psi. Bled off through 3/4" choke. Gas with some oil. Western pumped 50 bbls 2% KCL water and well went on vacuum. Ran one jt 2 3/8" tubing with collar on bottom (31.55') a standard SN (1.00') and 166 jts (5319.99') and set in slips at 5359' KB. Made 3 swab runs and came in flowing with 80 psi behind 3/4" choke. After 1 hr made 17 bbls fluid in tank and was 40% oil with 50 psi on gauge. After 4 hrs made 7 bbl/hr

Byron Oil Field, Inc.
Hanson Federal #2
Section 3, T23N, R7W
Rio Arriba County, New Mexico

Elledge Consulting & Production Company

COMPLETION HISTORY CONTINUED

45% oil with 40 psi on gauge. Made 45 bbls total fluid. SIFN. Casing 325 psi.

2-20-82 SICP 900, SITP 950. Bled off through 3/4" choke. Made 15.5 bbls fluid 35% oil first hour. After 2 hrs had leveled off to 4 bph 40% oil with 50 psi behind choke and 540 psi on casing side. In 9 hrs made 25 BO and 25 BLW, FCP 540, FTP 50 psi. Est. 400 MCFPD gas. SI for weekend.

2-21-82 Sunday-Crew off

2-22-82 SICP 975 psi, SITP 975 psi. Bled tubing to tank and casing to pit. Rig up Western and pump 20 bbls 2% KCl water down tubing and kill tubing. Ran 10 jts tubing for a total of 179 (5702.08) and tag sand at 5700' KB. Pulled two joints and landed at 5649' KB (177 jts). Ran one jt on bottom with collar on bottom (31.55') a standard SN (1.00') and 176 jts of tubing for total of (5638.55'). Made three swab runs bringing back gas and water, approx. 12 bbls and well kicked off. Flowed 4 bbls in 2 hrs and oil flow quit. Still flowed 200 MCF gas. SIFN. Casing 350 psi.

2-23-82 SICP 950 psi, SITP 475 psi. Open through 3/4" choke into frac tank. Flowed 4 hrs and made 25 bbls fluid, 50% oil. Drained frac tank of gel water and left 80 bbls oil. FTP 50 psi, FCP 450 psi. Had SUNCO transfer 80 bbls to the Hanson Federal #1. Shut well in for production. Released rig at 1:00 p.m. Left 4 jts tubing on location. Used 3 jts on Dunn Federal #2 tank battery. Rig down rig. Final Report.

UNITED STATES
DEPARTMENT OF THE INTERIOR
GEOLOGICAL SURVEY

SUBMIT IN DUPLICATE*

(See other instructions on reverse side)

Form approved.
Budget Bureau No. 42-B355.5.

WELL COMPLETION OR RECOMPLETION REPORT AND LOG*

5. LEASE DESIGNATION AND SERIAL NO.

NM 080273

6. IF INDIAN, ALLOTTEE OR TRIBE NAME

7. UNIT AGREEMENT NAME

8. FARM OR LEASE NAME

Hanson Federal

9. WELL NO.

2

10. FIELD AND POOL, OR WILDCAT

Lybrook Gallup

11. SEC. T., R., M., OR BLOCK AND SURVEY OR AREA

Section 3, T23N, R7W

12. COUNTY OR PARISH

Rio Arriba

13. STATE

N.M.

14. PERMIT NO.

15. DATE SPUNDED 1-4-82

16. DATE T.D. REACHED 1-14-82

17. DATE COMPL. (Ready to prod.) 2-23-82

18. ELEVATIONS (DF, RKB, RT, GR, ETC.)* 7056' KB

19. ELEV. CASINGHEAD 7044

20. TOTAL DEPTH, MD & TVD 5801

21. PLUG, BACK T.D., MD & TVD 5754

22. IF MULTIPLE COMPL., HOW MANY* --

23. INTERVALS DRILLED BY Rotary

24. PRODUCING INTERVAL(S), OF THIS COMPLETION—TOP, BOTTOM, NAME (MD AND TVD)*

5366 to 5633 Upper to Lower Gallup

25. WAS DIRECTIONAL SURVEY MADE No

26. TYPE ELECTRIC AND OTHER LOGS RUN

CNL-Density & Dual Induction Laterolog

27. WAS WELL CORED No

28. CASING RECORD (Report all strings set in well)

CASING SIZE WEIGHT, LB./FT. DEPTH SET (MD) HOLE SIZE CEMENTING RECORD AMOUNT PULLED

8 5/8" 24 268 12 1/2 250 Sx "B" 3% CC none

4 1/2" 10.5 5801 7 7/8 100 sx 50/50 Pozmix, 6% gel

200 sx 50/50 Pozmix, 2% gel, 10% salt

1000 sx 50/50 Pozmix, 6% gel & 50 sx neat

29. LINER RECORD

SIZE TOP (MD) BOTTOM (MD) BACKS CEMENT* SCREEN (MD)

30. TUBING RECORD

SIZE DEPTH SET (MD) PACKER SET (MD)

2 3/8" 5649 none

31. PERFORATION RECORD (Interval, size and number)

Interval 5366-5633

Size .37"

Number 39

See Attached for more information

32. ACID, SHOT, FRACTURE, CEMENT SQUEEZE, ETC.

DEPTH INTERVAL (MD) AMOUNT AND KIND OF MATERIAL USED

5633-5488 750 gal 15% & Frack 92000# sd

5424-5366 750 gal 15% & Frack 54960 # sd

5633-5488 46,000 gal Muri Max III

5424-5366 Top of cement 497'

33. PRODUCTION

DATE FIRST PRODUCTION 2-20-82

PRODUCTION METHOD (Flowing, gas lift, pumping—size and type of pump) Flow

WELL STATUS (Producing or shut-in) SI

DATE OF TEST 2-23-82

HOURS TESTED 4

CHOKER SIZE 3/4

PROD'N. FOR TEST PERIOD

OIL—BBL. 12.5

GAS—MCF. 67

WATER—BBL. 12.5

GAS-OIL RATIO 5360:1

FLOW. TUBING PRESS. 50

CASING PRESSURE 450

CALCULATED 24-HOUR RATE

OIL—BBL. 75

GAS—MCF. 400

WATER—BBL. 75

OIL GRAVITY-API (COR.) 38.5

not measured

34. DISPOSITION OF GAS (Sold, used for fuel, vented, etc.)

Negotiating for market to be sold

TEST WITNESSED BY

Dennis Hoefer

35. LIST OF ATTACHMENTS

None

36. I hereby certify that the foregoing and attached information is complete and correct as determined from all available records

SIGNED

Harold W. Sledge

TITLE

Petroleum Engineer

DATE

3-5-82

*(See Instructions and Spaces for Additional Data on Reverse Side)

NMOCC

NY

MAR 24 1982

INSTRUCTIONS

General: This form is designed for submitting a complete and correct well completion report and log on all types of lands and leases to either a Federal agency or a State agency, or both, pursuant to applicable Federal and/or State laws and regulations. Any necessary special instructions concerning the use of this form and the number of copies to be submitted, particularly with regard to local, area, or regional procedures and practices, either are shown below or will be issued by, or may be obtained from, the local Federal and/or State office. See instructions on items 22 and 24, and 33, below regarding separate reports for separate completions.

If not filed prior to the time this summary record is submitted, copies of all currently available logs (drillers, geologists, sample and core analysis, all types electric, etc.), formation and pressure tests, and directional surveys, should be attached hereto, to the extent required by applicable Federal and/or State laws and regulations. All attachments should be listed on this form, see item 35.

Item 4: If there are no applicable State requirements, locations on Federal or Indian land should be described in accordance with Federal requirements. Consult local State or Federal office for specific instructions.

Item 18: Indicate which elevation is used as reference (where not otherwise shown) for depth measurements given in other spaces on this form and in any attachments. **Items 22 and 24:** If this well is completed for separate production from more than one interval zone (multiple completion), so state in item 22, and in item 24 show the producing interval, or intervals, top(s), bottom(s) and name(s) (if any) for only the interval reported in item 33. Submit a separate report (page) on this form, adequately identified, for each additional interval to be separately produced, showing the additional data pertinent to such interval.

Item 29: "Sacks Cement": Attached supplemental records for this well should show the details of any multiple stage cementing and the location of the cementing tool.

Item 33: Submit a separate completion report on this form for each interval to be separately produced. (See instruction for items 22 and 24 above.)

37. SUMMARY OF POROUS ZONES: SHOW ALL IMPORTANT ZONES OF POROSITY AND CONTENTS THEREOF; CORED INTERVALS; AND ALL DRILL-STEM TESTS, INCLUDING DEPTH INTERVAL TESTED, CUSHION USED, TIME TOOL OPEN, FLOWING AND SHUT-IN PRESSURES, AND RECOVERIES				38. GEOLOGIC MARKERS		
FORMATION	TOP	BOTTOM	DESCRIPTION, CONTENTS, ETC.	NAME	MEAS. DEPTH	TRUE VERT. DEPTH
Gallup	5302	5750	Oil & Gas	Gallup	5302	
Mesaverde	4290	4512	Water	Mesaverde	4290	
Pictured Cliffs	2115	2222	Water	Pictured Cliffs	2115	
Oho Alamo	1100	1140	water	Oho Alamo	1100	

Perforation Record

5488, 5516, 5517, 5518, 5519, 5520, 5521, 5522, 5523, 5524, 5525,
5526, 5534, 5558, 5567, 5568, 5569, 5587, 5625, 5633.

5366, 5395, 5396, 5397, 5397, 5398, 5399, 5400, 5401, 5402, 5403, 5404,
5405, 5406, 5407, 5408, 5409, 5422, 5423, 5424