

NO. OF COPIES RECEIVED	
DISTRIBUTION	
SANTA FE	
FILE	
U.S.G.S.	
LAND OFFICE	
OPERATOR	

# NEW MEXICO OIL CONSERVATION COMMISSION

30-039-22893

Form C-101  
Revised 1-1-85

5A. Indicate Type of Lease
STATE <input type="checkbox"/> FEE <input checked="" type="checkbox"/>

5. State Oil & Gas Lease No.

## APPLICATION FOR PERMIT TO DRILL, DEEPEN, OR PLUG BACK

1a. Type of Work		7. Unit Agreement Name	
b. Type of Well OIL WELL <input checked="" type="checkbox"/> GAS WELL <input type="checkbox"/> OTHER <input type="checkbox"/>		8. Farm or Lease Name Glenmorangie	
2. Name of Operator Merrion Oil & Gas Corporation		9. Well No. 1	
3. Address of Operator P. O. Box 1017, Farmington, New Mexico 87401		10. Field and Pool, or Wildcat Undesignated Gallup	
4. Location of Well UNIT LETTER M LOCATED 790 FEET FROM THE South LINE AND 990 FEET FROM THE West LINE OF SEC. 9 TWP. 23N RGE. 6W NMPM		12. County Rio Arriba	
19. Proposed Depth 5635		19A. Formation Gallup	
20. Rotary or C.T. Rotary		21. Elevations (Show whether DF, RT, etc.) 6789	
21A. Kind & Status Plug. Bond Statewide		21B. Drilling Contractor Young Drilling Company	
22. Approx. Date Work will start 2/15/82			

23.

## PROPOSED CASING AND CEMENT PROGRAM

SIZE OF HOLE	SIZE OF CASING	WEIGHT PER FOOT	SETTING DEPTH	SACKS OF CEMENT	EST. TOP
12-1/4"	8-5/8"	20 #/ft	200'	175 sx	Surface
7-7/8"	4-1/2"	10.5 #/ft.	5635' KB	500 sx	Above Ojo Alamo

Propose to drill 12 1/4" hole to 200 ft., set 200 ft. of 8-5/8" 20 3/ft. new surface casing w/175 sx Class 'B' 2% CACL<sub>2</sub>. Will drill 7-7/8" hole to TD and run open hole logs. If logs appear productive will run 4 1/2", K-55, 10.5 3/ft. new casing to TD and 2 stage cement. 1st stage 175 sx Class 'H' 2% gel to cover Gallup. Stage tool below point lookout @ 4465' est. 2nd stage 500 sx Class 'B' w/2% D-79 followed by 100 sx Class 'H' 2% gel. Will bring cement above Ojo Alamo. Drilling mud will be low water loss gel, fresh water, starch. Will perforate and frac as necessary. Blowout prevention equipment will be 10" 900 series double ram.

## ESTIMATED TOPS

Ojo Alamo	1410'	Lewis	2135'
Kirtland	1580'	Mesa Verde	3535'
Fruitland	1860'	Mancos	4455'
Pictured Cliffs	1995'	Gallup	5076'

TOTAL DEPTH 5635'

IN ABOVE SPACE DESCRIBE PROPOSED PROGRAM: IF PROPOSAL IS TO DEEPEN OR PLUG BACK, GIVE DATA ON PRESENT PRODUCTIVE ZONE AND PROPOSED NEW PRODUCTIVE ZONE. GIVE BLOWOUT PREVENTER PROGRAM, IF ANY.

I hereby certify that the information above is true and complete to the best of my knowledge and belief.

Signed [Signature] Title President Date 2/3/82

(This space for State Use)

APPROVED BY [Signature] TITLE [Signature] DATE FEB 4 1982

CONDITIONS OF APPROVAL, IF ANY:

Approved 4/1982

## OIL CONSERVATION DIVISION

STATE OF NEW MEXICO  
ENERGY AND MINERALS DEPARTMENTP. O. BOX 2088  
SANTA FE, NEW MEXICO 87501Form C-102  
Revised 10-1-78

All distances must be from the outer boundaries of the Section.

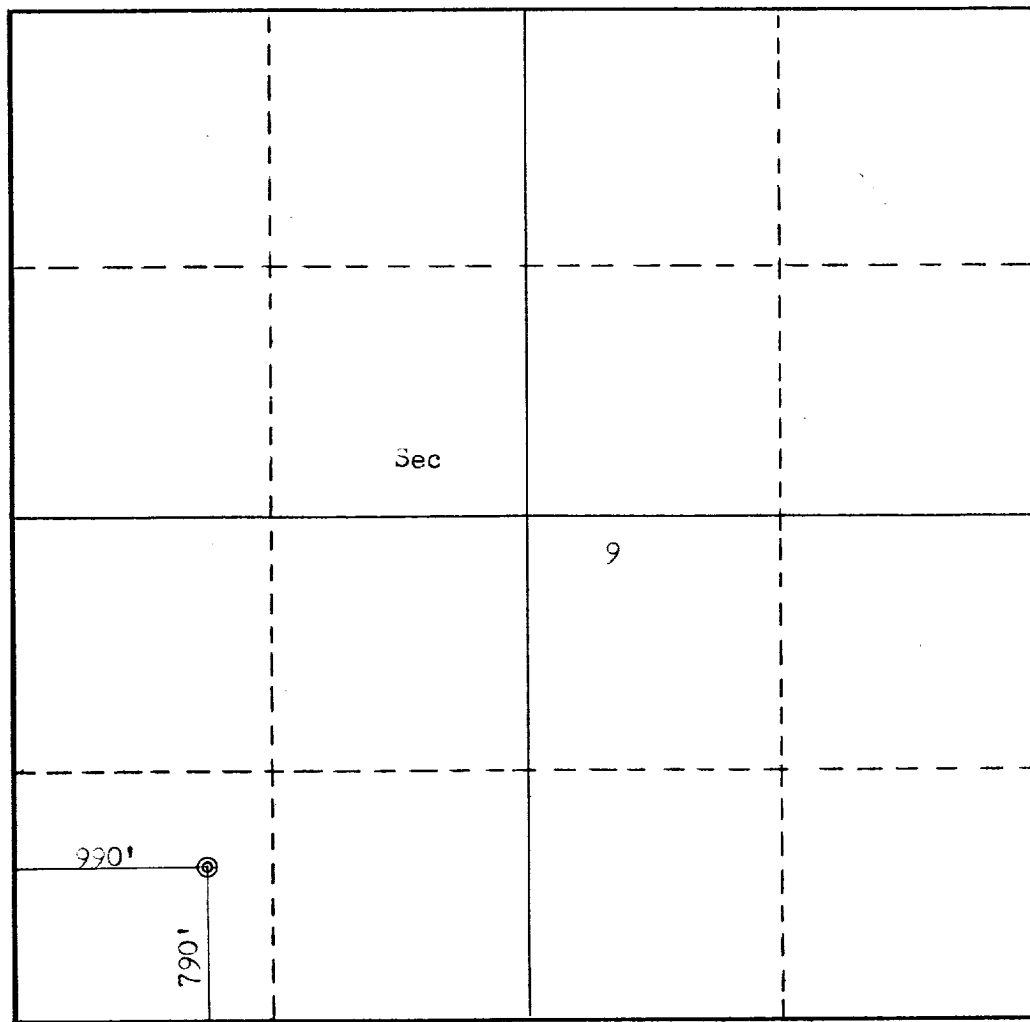
Operator <b>Merrion Oil and Gas Corporation</b>			Lease <b>Glenmorangi</b>		Well No. <b>1</b>
Unit Letter <b>M</b>	Section <b>9</b>	Township <b>23N</b>	Range <b>6W</b>	County <b>Rio Arriba</b>	
Actual Footage Location of Well: <b>790</b> feet from the <b>South</b> line and <b>990</b> feet from the <b>West</b> line					
Ground Level Elev. <b>6789</b>	Producing Formation <b>Gallup</b>		Pool <b>Undesignated</b>		Dedicated Acreage: <b>40</b> Acres

1. Outline the acreage dedicated to the subject well by colored pencil or hachure marks on the plat below.
2. If more than one lease is dedicated to the well, outline each and identify the ownership thereof (both as to working interest and royalty).
3. If more than one lease of different ownership is dedicated to the well, have the interests of all owners been consolidated by communitization, unitization, force-pooling, etc?

☐ Yes ☐ No If answer is "yes," type of consolidation \_\_\_\_\_

If answer is "no," list the owners and tract descriptions which have actually been consolidated. (Use reverse side of this form if necessary.) \_\_\_\_\_

No allowable will be assigned to the well until all interests have been consolidated (by communitization, unitization, forced-pooling, or otherwise) or until a non-standard unit, eliminating such interests, has been approved by the Commission.



## CERTIFICATION

I hereby certify that the information contained herein is true and complete to the best of my knowledge and belief.

Name  
**J. Gregory Merrion**

Position  
**President**

Company  
**Merrion Oil & Gas Corporation**

Date  
**2/3/82**

I hereby certify that the well location shown on this plat was plotted from field notes of actual surveys made by me or under my supervision, and that the same is true and correct to the best of my knowledge and belief.

Date Surveyed

**February 1982**

Registered Professional Engineer and/or Land Surveyor

**Fred B. Kerr Jr.**

Certificate No.

**3950**