

UNITED STATES
DEPARTMENT OF THE INTERIOR

GEOLOGICAL SURVEY

APPLICATION FOR PERMIT TO DRILL, DEEPEN, OR PLUG BACK

1a. TYPE OF WORK

DRILL ☒

PLUG BACK ☐

b. TYPE OF WELL

OIL
WELL ☐

GAS
WELL ☒

OTHER

SINGLE
ZONE ☒

MULTIPLE
ZONE ☐

2. NAME OF OPERATOR

Robert L. Bayless

3. ADDRESS OF OPERATOR

P.O. Box 1541, Farmington, NM 87401

4. LOCATION OF WELL (Report location clearly and in accordance with any State requirements.)*

At surface
800' FNL & 1580' FWL

At proposed prod. zone
same

14. DISTANCE IN MILES AND DIRECTION FROM NEAREST TOWN OR POST OFFICE*

15. DISTANCE FROM PROPOSED*

LOCATION TO NEAREST
PROPERTY OR LEASE LINE, FT.
(Also to nearest drlg. unit line, if any)

16. NO. OF ACRES IN LEASE

2560

17. NO. OF ACRES ASSIGNED
TO THIS WELL

158.45

18. DISTANCE FROM PROPOSED LOCATION*
TO NEAREST WELL, DRILLING, COMPLETED,
OR APPLIED FOR, ON THIS LEASE, FT.

19. PROPOSED DEPTH

2250 ft.

20. ROTARY OR CABLE TOOLS

Rotary

21. ELEVATIONS (Show whether DF, RT, GR, etc.)

6630' GL

22. APPROX. DATE WORK WILL START*

Soon as Permit Approved

23. PROPOSED CASING AND CEMENTING PROGRAM

SIZE OF HOLE	SIZE OF CASING	WEIGHT PER FOOT	SETTING DEPTH	QUANTITY OF CEMENT
9"	7"	23#	90'	30 sacks circulated to surface
6 1/4"	2-7/8"	6.5#	2250'	150 sacks

Will drill 9" hole to 90' and set 90' of 7", 23#, J-55 used casing with 30 sacks Class "H" cement, circulated to surface. Will drill 6 1/4" hole to 2250 feet and run 2250 feet of 2-7/8", EUE, J-55 used casing and cement with 150 sacks Class "H" cement with 2% D-79 circulated to above Ojo Alamo. Circulating medium will be clear water, natural mud and water loss control additives. No abnormal pressures or temperatures are anticipated. Will run Induction and Density logs. Blowout preventer schematic is attached. The gas from this formation is dedicated to a gas contract.

ESTIMATED TOPS

Surface Formation: Clays & Sand

1440': Ojo Alamo

1875': Fruitland

2076': Pictured Cliffs - natural gas, salt water

IN ABOVE SPACE DESCRIBE PROPOSED PROGRAM: If proposal is to deepen or plug back, give data on present productive zone and proposed new productive zone. If proposal is to drill or deepen directionally, give pertinent data on subsurface locations and measured and true vertical depths. Give blowout preventer program, if any.

24.

SIGNED

TITLE

Operator

DATE

Feb. 12, 1982

(This space for Federal or State office use)

PERMIT NO.

APPROVAL DATE

APPROVED BY

TITLE

CONDITIONS OF APPROVAL, IF ANY:

APPROVED
AS AMENDED
DATE

MAR 19 1982

DISTRICT

110000



OIL CONSERVATION DIVISION

STATE OF NEW MEXICO
ENERGY AND MINERALS DEPARTMENT

P. O. BOX 2088

SANTA FE, NEW MEXICO 87501

Form C-107
Revised 10-1-78

All distances must be from the outer boundaries of the Section.

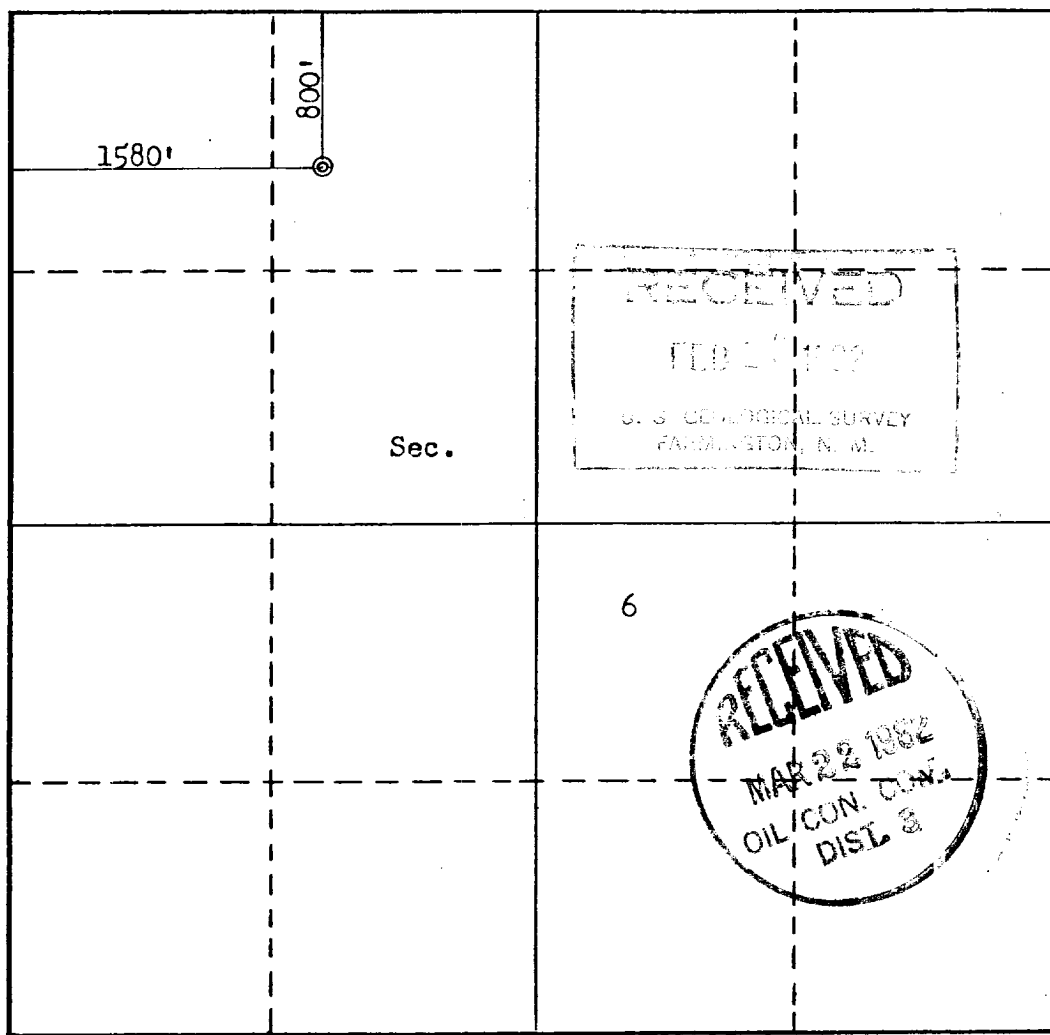
Operator R. L. BAYLESS			Lease AXI - Apache H		Well No. 16
Unit Letter C	Section 6	Township 23N	Range 5W	County Rio Arriba	
Actual Footage Location of Well: 800 feet from the North line and 1580 feet from the West line					
Ground Level Elev. 6630	Producing Formation Pictured Cliffs		Pool Ballard Pictured Cliffs	Dedicated Acreage: 158.45 Acres	

1. Outline the acreage dedicated to the subject well by colored pencil or hachure marks on the plat below.
2. If more than one lease is dedicated to the well, outline each and identify the ownership thereof (both as to working interest and royalty).
3. If more than one lease of different ownership is dedicated to the well, have the interests of all owners been consolidated by communitization, unitization, force-pooling, etc?

☐ Yes ☐ No If answer is "yes," type of consolidation _____

If answer is "no," list the owners and tract descriptions which have actually been consolidated. (Use reverse side of this form if necessary.) _____

No allowable will be assigned to the well until all interests have been consolidated (by communitization, unitization, forced-pooling, or otherwise) or until a non-standard unit, eliminating such interests, has been approved by the Commission.



CERTIFICATION

I hereby certify that the information contained herein is true and complete to the best of my knowledge and belief.

Robert L. Bayless
Name

Robert L. Bayless

Position

Owner

Company

Robert L. Bayless

Date

Feb. 12, 1982

I hereby certify that the well location shown on this plat was plotted from field notes of actual surveys made by me or under my supervision, and that the same is true and correct to the best of my knowledge and belief.

Date Surveyed

February 12, 1982

Registered Professional Engineer and/or Land Surveyor

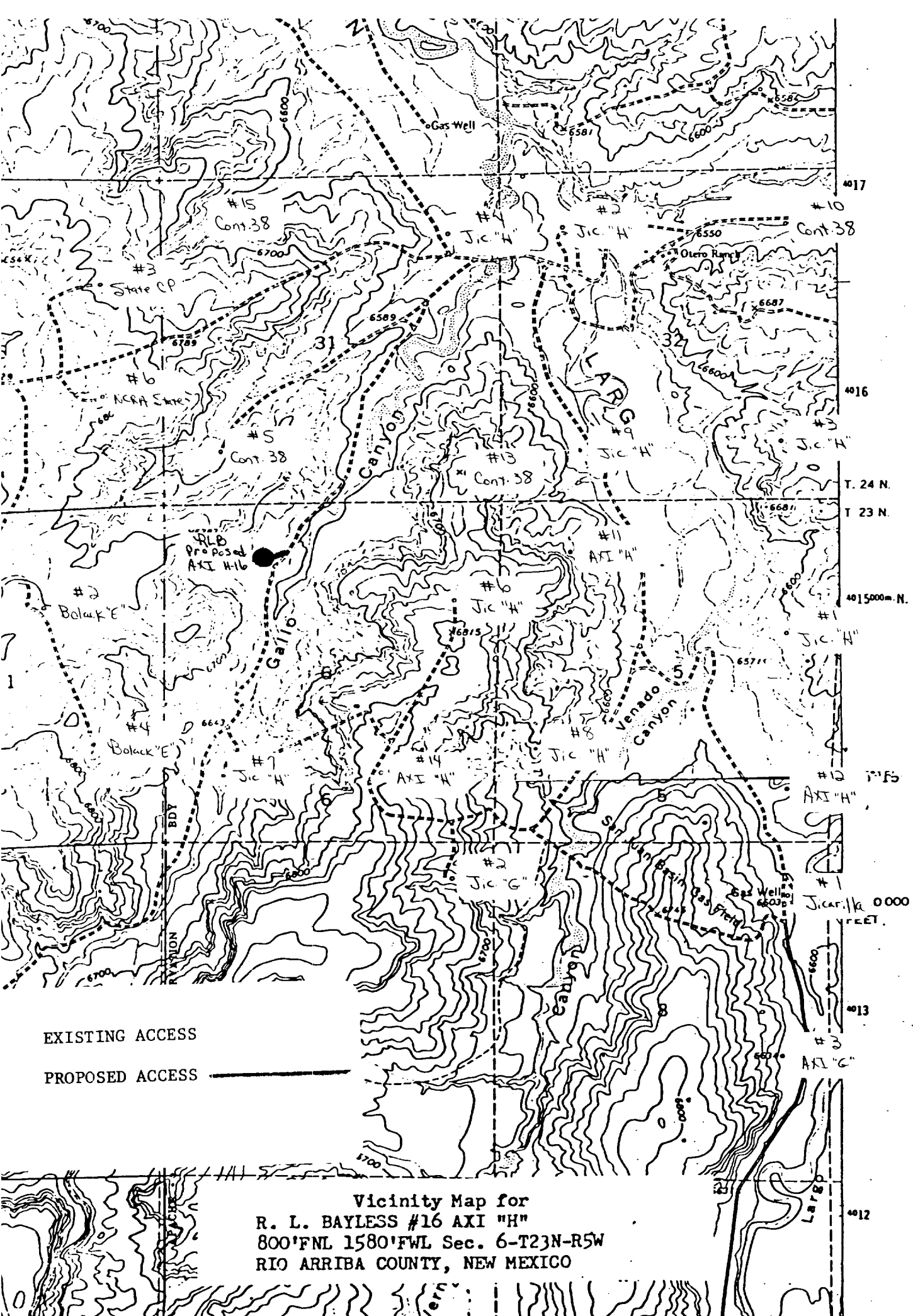
Fred B. Kerr Jr.
Fred B. Kerr Jr.

Certificate No.

3950

F. B. KERR, JR.

0 230 460 690 920 1150 1380 1610 1840 2070 2300 2530 2760 3000 3230 3460 3690 3920 4150 4380 4610 4840 5070 5300 5530 5760 5990 6220 6450 6680 6910 7140 7370 7600 7830 8060 8290 8520 8750 8980 9210 9440 9670 9900 10130 10360 10590 10820 11050 11280 11510 11740 11970 12200 12430 12660 12890 13120 13350 13580 13810 14040 14270 14500 14730 14960 15190 15420 15650 15880 16110 16340 16570 16800 17030 17260 17490 17720 17950 18180 18410 18640 18870 19100 19330 19560 19790 20020 20250 20480 20710 20940 21170 21400 21630 21860 22090 22320 22550 22780 23010 23240 23470 23700 23930 24160 24390 24620 24850 25080 25310 25540 25770 26000 26230 26460 26690 26920 27150 27380 27610 27840 28070 28300 28530 28760 28990 29220 29450 29680 29910 30140 30370 30600 30830 31060 31290 31520 31750 31980 32210 32440 32670 32900 33130 33360 33590 33820 34050 34280 34510 34740 34970 35200 35430 35660 35890 36120 36350 36580 36810 37040 37270 37500 37730 37960 38190 38420 38650 38880 39110 39340 39570 39800 40030 40260 40490 40720 40950 41180 41410 41640 41870 42100 42330 42560 42790 43020 43250 43480 43710 43940 44170 44400 44630 44860 45090 45320 45550 45780 46010 46240 46470 46700 46930 47160 47390 47620 47850 48080 48310 48540 48770 49000 49230 49460 49690 49920 50150 50380 50610 50840 51070 51300 51530 51760 51990 52220 52450 52680 52910 53140 53370 53600 53830 54060 54290 54520 54750 54980 55210 55440 55670 55900 56130 56360 56590 56820 57050 57280 57510 57740 57970 58200 58430 58660 58890 59120 59350 59580 59810 60040 60270 60500 60730 60960 61190 61420 61650 61880 62110 62340 62570 62800 63030 63260 63490 63720 63950 64180 64410 64640 64870 65100 65330 65560 65790 66020 66250 66480 66710 66940 67170 67400 67630 67860 68090 68320 68550 68780 69010 69240 69470 69700 69930 70160 70390 70620 70850 71080 71310 71540 71770 72000 72230 72460 72690 72920 73150 73380 73610 73840 74070 74300 74530 74760 74990 75220 75450 75680 75910 76140 76370 76600 76830 77060 77290 77520 77750 77980 78210 78440 78670 78900 79130 79360 79590 79820 80050 80280 80510 80740 80970 81200 81430 81660 81890 82120 82350 82580 82810 83040 83270 83500 83730 83960 84190 84420 84650 84880 85110 85340 85570 85800 86030 86260 86490 86720 86950 87180 87410 87640 87870 88100 88330 88560 88790 89020 89250 89480 89710 89940 90170 90400 90630 90860 91090 91320 91550 91780 92010 92240 92470 92700 92930 93160 93390 93620 93850 94080 94310 94540 94770 95000 95230 95460 95690 95920 96150 96380 96610 96840 97070 97300 97530 97760 97990 98220 98450 98680 98910 99140 99370 99600 99830 100060 100290 100520 100750 100980 101210 101440 101670 101900 102130 102360 102590 102820 103050 103280 103510 103740 103970 104200 104430 104660 104890 105120 105350 105580 105810 106040 106270 106500 106730 106960 107190 107420 107650 107880 108110 108340 108570 108800 109030 109260 109490 109720 109950 110180 110410 110640 110870 111100 111330 111560 111790 112020 112250 112480 112710 112940 113170 113400 113630 113860 114090 114320 114550 114780 115010 115240 115470 115700 115930 116160 116390 116620 116850 117080 117310 117540 117770 118000 118230 118460 118690 118920 119150 119380 119610 119840 120070 120300 120530 120760 120990 121220 121450 121680 121910 122140 122370 122600 122830 123060 123290 123520 123750 123980 124210 124440 124670 124900 125130 125360 125590 125820 126050 126280 126510 126740 126970 127200 127430 127660 127890 128120 128350 128580 128810 129040 129270 129500 129730 129960 130190 130420 130650 130880 131110 131340 131570 131800 132030 132260 132490 132720 132950 133180 133410 133640 133870 134100 134330 134560 134790 135020 135250 135480 135710 135940 136170 136400 136630 136860 137090 137320 137550 137780 138010 138240 138470 138700 138930 139160 139390 139620 139850 140080 140310 140540 140770 141000 141230 141460 141690 141920 142150 142380 142610 142840 143070 143300 143530 143760 143990 144220 144450 144680 144910 145140 145370 145600 145830 146060 146290 146520 146750 146980 147210 147440 147670 147900 148130 148360 148590 148820 149050 149280 149510 149740 149970 150200 150430 150660 150890 151120 151350 151580 151810 152040 152270 152500 152730 152960 153190 153420 153650 153880 154110 154340 154570 154800 155030 155260 155490 155720 155950 156180 156410 156640 156870 157100 157330 157560 157790 158020 158250 158480 158710 158940 159170 159400 159630 159860 160090 160320 160550 160780 161010 161240 161470 161700 161930 162160 162390 162620 162850 163080 163310 163540 163770 164000 164230 164460 164690 164920 165150 165380 165610 165840 166070 166300 166530 166760 166990 167220 167450 167680 167910 168140 168370 168600 168830 169060 169290 169520 169750 169980 170210 170440 170670 170900 171130 171360 171590 171820 172050 172280 172510 172740 172970 173200 173430 173660 173890 174120 174350 174580 174810 175040 175270 175500 175730 175960 176190 176420 176650 176880 177110 177340 177570 177800 178030 178260 178490 178720 178950 179180 179410 179640 179870 180100 180330 180560 180790 181020 181250 181480 181710 181940 182170 182400 182630 182860 183090 183320 183550 183780 184010 184240 184470 184700 184930 185160 185390 185620 185850 186080 186310 186540 186770 187000 187230 187460 187690 187920 188150 188380 188610 188840 189070 189300 189530 189760 189990 190220 190450 190680 190910 191140 191370 191600 191830 192060 192290 192520 192750 192980 193210 193440 193670 193900 194130 194360 194590 194820 195050 195280 195510 195740 195970 196200 196430 196660 196890 197120 197350 197580 197810 198040 198270 198500 198730 198960 199190 199420 199650 199880 200110 200340 200570 200800 201030 201260 201490 201720 201950 202180 202410 202640 202870 203100 203330 203560 203790 204020 204250 204480 204710 204940 205170 205400 205630 205860 206090 206320 206550 206780 207010 207240 207470 207700 207930 208160 208390 208620 208850 209080 209310 209540 209770 210000 210230 210460 210690 210920 211150 211380 211610 211840 212070 212300 212530 212760 212990 213220 213450 213680 213910 214140 214370 214600 214830 215060 215290 215520 215750 215980 216210 216440 216670 216900 217130 217360 217590 217820 218050 218280 218510 218740 218970 219200 219430 219660 219890 220120 220350 220580 220810 221040 221270 221500 221730 221960 222190 222420 222650 222880 223110 223340 223570 223800 224030 224260 224490 224720 224950 225180 225410 225640 225870 226100 226330 226560 226790 227020 227250 227480 227710 227940 228170 228400 228630 228860 229090 229320 229550 229780 230010 230240 230470 230700 230930 231160 231390 231620 231850 232080 232310 232540 232770 233000 233230 233460 233690 233920 234150 234380 234610 234840 235070 235300 235530 235760 235990 236220 236450 236680 236910 237140 237370 237600 237830 238060 238290 238520 238750 238980 239210 239440 239670 239900 240130 240360 240590 240820 241050 241280 241510 241740 241970 242200 242430 242660 242890 243120 243350 243580 243810 244040 244270 244500 244730 244960 245190 245420 245650 245880 246110 246340 246570 246800 247030 247260 247490 247720 247950 248180 248410 248640 248870 249100 249330 249560 249790 250020 250250 250480 250710 250940 251170 251400 251630 251860 252090 252320 252550 252780 253010 253240 253470 253700 253930 254160 254390 254620 254850 255080 255310 255540 255770 256000 256230 256460 256690 256920 257150 257380 257610 257840 258070 258300 258530 258760 258990 259220 259450 259680 259910 260140 260370 260600 260830 261060 261290 261520 261750 261980 262210 262440 262670 262900 263130 263360 263590 263820 264050 264280 264510 264740 264970 265200 265430 265660 265890 266120 266350 266580 266810 267040 267270 267500 267730 267960 268190 268420 268650 268880 269110 269340 269570 269800 270030 270260 270490 270720 270950 271180 271410 271640 271870 272100 272330 272560 272790 273020 273250 273480 273710 273940 274170 274400 274630 274860 275090 275320 275550 275780 276010 276240 276470 276700 276930 277160 277390 277620 277850 278080 278310 278540 278770 279000 279230 279460 279690 279920 280150 280380 280610 280840 281070 281300 281530 281760 281990 282220 282450 282680 282910 283140 283370 283600 283830 284060 284290 284520 284750 284980 285210 285440 285670 285900 286130 286360 286590 286820 287050 287280 287510 287740 287970 288200 288430 288660 288890 289120 289350 289580 289810 290040 290270 290500 290730 290960 291190 291420 291650 291880 292110 292340 292570 292800 293030 293260 293490 293720 293950 294180 294410 294640 294870 295100 295330 295560 295790 296020 296250 296480 296710 296940 297170 297400 297630 297860 298090 298320 298550 298780 299010 299240 299470 299700 300000



Vicinity Map for
R. L. BAYLESS #16 AXI "H"
800'FNL 1580'FWL Sec. 6-T23N-R5W
RIO ARRIBA COUNTY, NEW MEXICO

12250
1150