

UNITED STATES
DEPARTMENT OF THE INTERIOR
GEOLOGICAL SURVEY

30-039-22923

5. LEASE DESIGNATION AND SERIAL NO.

NM 23231

6. IF INDIAN, ALLOTTEE OR TRIBE NAME

7. UNIT AGREEMENT NAME

8. FARM OR LEASE NAME

Theodore Zink

9. WELL NO.

1

10. FIELD AND POOL, OR WILDCAT

Undesignated

11. SEC., T., R., M., OR BLK.
AND SURVEY OR AREA

Sec. 15, T23N, R6W

12. COUNTY OR PARISH

Rio Arriba

13. STATE
New Mex.

APPLICATION FOR PERMIT TO DRILL, DEEPEN, OR PLUG BACK

1a. TYPE OF WORK

DRILL ☒DEEPEN ☐PLUG BACK ☐

b. TYPE OF WELL

OIL
WELL ☒GAS
WELL ☐

OTHER

SINGLE
ZONE ☒MULTIPLE
ZONE ☐

2. NAME OF OPERATOR

Merrion Oil & Gas Corporation

3. ADDRESS OF OPERATOR

P. O. Box 1017, Farmington, New Mexico 87401

4. LOCATION OF WELL (Report location clearly and in accordance with any State requirements.)*

At 460' FNL & 1005 FWL

At proposed prod. zone Same

14. DISTANCE IN MILES AND DIRECTION FROM NEAREST TOWN OR POST OFFICE*

1 mile North of Counselors

15. DISTANCE FROM PROPOSED*

LOCATION TO NEAREST
PROPERTY OR LEASE LINE, FT.
(Also to nearest drlg. unit line, if any)

660

16. NO. OF ACRES IN LEASE

200

17. NO. OF ACRES ASSIGNED
TO THIS WELL

8040

18. DISTANCE FROM PROPOSED LOCATION*
TO NEAREST WELL, DRILLING, COMPLETED,
OR APPLIED FOR, ON THIS LEASE, FT.

N/A

19. PROPOSED DEPTH

5700'

20. ROTARY OR CABLE TOOLS

Rotary

21. ELEVATIONS (Show whether DF, RT, GR, etc.)

6821 GL

22. APPROX. DATE WORK WILL START*

April, 1982

23.

PROPOSED CASING AND CEMENTING PROGRAM

SIZE OF HOLE	SIZE OF CASING	WEIGHT PER FOOT	SETTING DEPTH	QUANTITY OF CEMENT
12-1/4"	8-5/8"	20 #/ft.	200	175 sx.
7-7/8"	4-1/2"	10.5 #/ft.	5700	875 sx.

Propose to drill 12-1/4" hole to 200 ft. set 200 ft. of 8-5/8" 20 #/ft. new surface casing w/175 sx Class 'B' 2% CACL₂. Will drill 7-7/8" hole to TD and run open hole logs. If logs appear productive will run 4-1/2", K-55, 10.5 #/ft. new casing to TD and 2 stage cement. 1st stage 175 sx Class 'H' 2% Gel to cover Gallup. Stage tool below point lookout @ 4675' est. 2nd stage 600 sx Class 'B' w/2% D-79 followed by 100 sx Class 'G' 2% gel. Will bring cement above Ojo Alamo. Drilling mud will be low water loss gel, fresh water, starch. Will perforate and frac as necessary. Blowout prevention equipment will be 10" 900 series double ram.

Estimated Tops:

Ojo Alamo	1435	Lewis	2160
Kirtland	1600	Mesa Verde	3560
Fruitland	1885	Macos	4475
Pictured Cliffs	2020	Gallup	5308

IN ABOVE SPACE DESCRIBE PROPOSED PROGRAM: If proposal is to deepen or plug back, give data on present productive zone and proposed new productive zone. If proposal is to drill or deepen directionally, give pertinent data on subsurface locations and measured and true vertical depths. Give blowout prevention program, if any.

24.

SIGNED

TITLE

President

DATE

3/3/82

(This space for Federal or State office use)

PERMIT NO.

APPROVAL DATE

APPROVED BY

CONDITIONS OF APPROVAL, IF ANY:

APPROVED
AS AMENDED

DATE

APR 07 1982

DISTRICT ENGINEER

M1000

All distances must be from the outer boundaries of the Section.

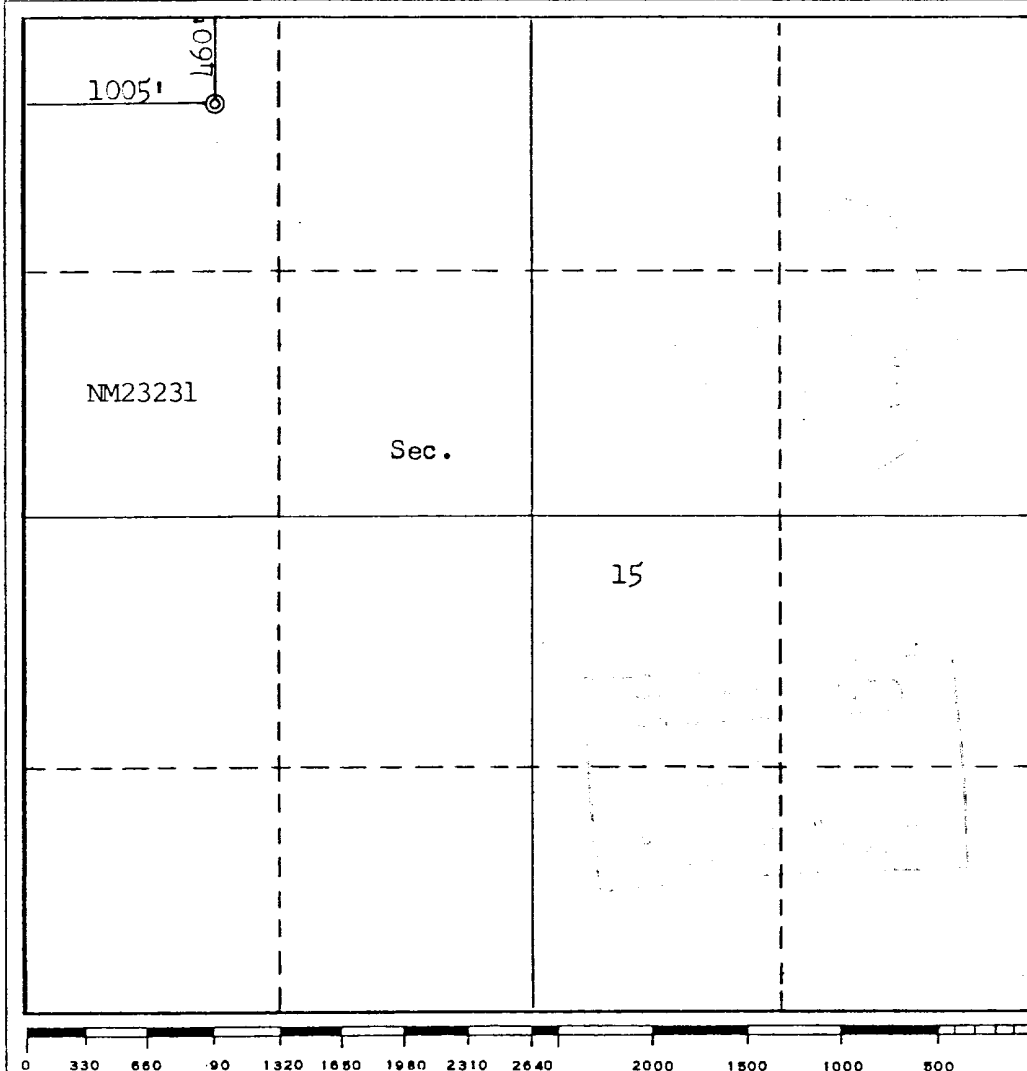
Operator MERRION OIL & GAS CORPORATION			Lease THEODORE ZINC		Well No. 1
Unit Letter D	Section 15	Township 23N	Range 6W	County Rio Arriba	
Actual Footage Location of Well: 460 feet from the North line and 1005 feet from the West line					
Ground Level Elev. 6821	Producing Formation Gallup		Pool Undesignated		Dedicated Acreage: 80 Acres

- Outline the acreage dedicated to the subject well by colored pencil or hachure marks on the plat below.
- If more than one lease is dedicated to the well, outline each and identify the ownership thereof (both as to working interest and royalty).
- If more than one lease of different ownership is dedicated to the well, have the interests of all owners been consolidated by communitization, unitization, force-pooling, etc?

☐ Yes ☐ No If answer is "yes," type of consolidation _____

If answer is "no," list the owners and tract descriptions which have actually been consolidated. (Use reverse side of this form if necessary.) _____

No allowable will be assigned to the well until all interests have been consolidated (by communitization, unitization, forced-pooling, or otherwise) or until a non-standard unit, eliminating such interests, has been approved by the Commission.



CERTIFICATION

I hereby certify that the information contained herein is true and complete to the best of my knowledge and belief.

Name

Steve S. Dunn

Position

Operations Manager

Company

Merrion Oil & Gas Corporation

Date

3/3/82

I hereby certify that the well location shown on this plat was plotted from field notes of actual surveys made by me or under my supervision, and that the same is true and correct to the best of my knowledge and belief.

Date Surveyed

March 1, 1982

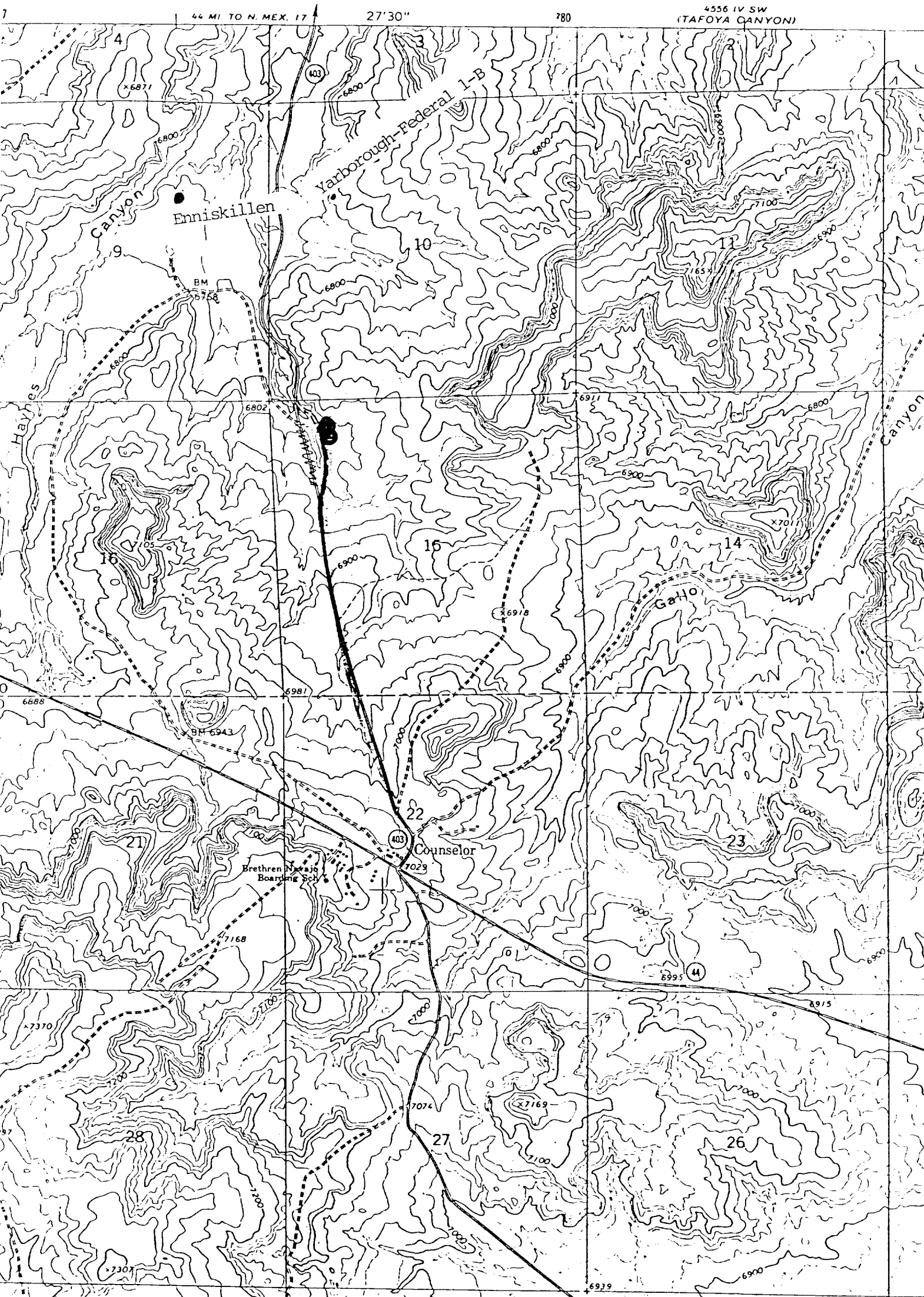
Registered Professional Engineer and/or Land Surveyor

Fred B. Kerr Jr.

Certificate No.

3950

8 MERR. J.



Vicinity Map for
MERRION OIL & GAS CORPORATION #1 THEODORE ZINK
460'FNL 1005'FWL Sec. 15-T23N-R6W
RIO ARriba COUNTY, NEW MEXICO

New Access Road: —