

UNITED STATES  
DEPARTMENT OF THE INTERIOR  
GEOLOGICAL SURVEY

30-039-23022

5. LEASE DESIGNATION AND SERIAL NO.

Contract #71

6. IF INDIAN, ALLOTTEE OR TRIBE NAME

Jicarilla Apache

7. UNIT AGREEMENT NAME

8. FARM OR LEASE NAME

Jicarilla ~~Tract~~ #71

9. WELL NO.

#10

10. FIELD AND POOL, OR WILDCAT

S. Lindrith - Gallup Dakota

11. SEC., T., R., M., OR BLK.  
AND SURVEY OR AREA

Sec. 3 T23N, R4W

12. COUNTY OR PARISH 13. STATE

Rio Arriba New Mexico

1a. TYPE OF WORK

DRILL ☒

DEEPEN ☐

PLUG BACK ☐

b. TYPE OF WELL

OIL  
WELL ☒

GAS  
WELL ☐

OTHER

SINGLE  
ZONE ☐

MULTIPLE  
ZONE ☐

2. NAME OF OPERATOR

Chace Oil Company, Inc.

3. ADDRESS OF OPERATOR

313 Washington, S. E., Albuquerque, New Mexico

4. LOCATION OF WELL (Report location clearly and in accordance with any State regulations)  
At surface Unit "A" 530' FNL and 330' FEL

At proposed prod. zone

14. DISTANCE IN MILES AND DIRECTION FROM NEAREST TOWN OR POST OFFICE\*

15 1/2 miles W-SW of Lindrith, New Mexico

15. DISTANCE FROM PROPOSED\*

LOCATION TO NEAREST  
PROPERTY OR LEASE LINE, FT.  
(Also to nearest drlg. unit line, if any) 330'

16. NO. OF ACRES OF LEASE

1920

18. DISTANCE FROM PROPOSED LOCATION\*

TO NEAREST WELL, DRILLING, COMPLETED,  
OR APPLIED FOR, ON THIS LEASE, FT. 1000'

19. PROPOSED DEPTH

7440'

17. NO. OF ACRES ASSIGNED  
TO THIS WELL

33 90

20. ROTARY OR CABLE TOOLS

Rotary

21. ELEVATIONS (Show whether DF, RT, GR, etc.)

7100' KB 7089' GL

22. APPROX. DATE WORK WILL START\*

August 9, 1982

23. PROPOSED CASING AND CEMENTING PROGRAM

SIZE OF HOLE	SIZE OF CASING	WEIGHT PER FOOT	SETTING DEPTH	QUANTITY OF CEMENT
9 3/4"	8 5/8"	22	225'	225 sxs Class "B" cement
7 7/8"	4 1/2"	11.6	7440'	1st stage - 750 sxs 50/50 posmix; 2nd stage - 550 sxs 40/60 posmix; 12% gel; 200 sxs Class "B" cement

Drill 230' of 9 3/4" surface hole. Set 225' of 8 5/8" casing; cement to surface with 225 sxs cement. Use an oil base mud (15% oil) and Schaeffer 5000# standard doublegate hydraulic BOP. Drill 7 7/8" hole to 7440' to test the Dakota formation.

Wasatch formation on surface. Estimated tops: Ojo-2440'; Pictured Cliffs-2925'; Chacra-3280'; Cliff House-4495'; Point Lookout-5005'; Gallup-6110'; Greenhorn-7020'; Dakota "A"-7160'; Dakota "D"-7290'.

D. V. Tool @ 3000'. Float collar @ 7410'.

RECEIVED

APR 2 1982

U. S. GEOLOGICAL SURVEY  
ALBUQUERQUE, N.M.

IN ABOVE SPACE DESCRIBE PROPOSED PROGRAM: If proposal is to deepen or plug back, give data on present productive zone and proposed new productive zone. If proposal is to drill or deepen directionally, give pertinent data on subsurface locations and measured and true vertical depths. Give blowout preventer program, if any.

24.

SIGNED

*Rosa Eastwing*

TITLE

Landman

DATE

March 30, 1982

(This space for Federal or State office use)

PERMIT NO.

APPROVAL DATE

APPROVED BY

TITLE

CONDITIONS OF APPROVAL, IF ANY:

\*See Instructions On Reverse Side

NMOCC

APPROVED  
AS AMENDED

JUN 16 1982

JAMES F. SIMS  
DISTRICT ENGINEER

NEW MEXICO OIL CONSERVATION COMMISSION  
WELL LOCATION AND ACREAGE DEDICATION PLAT

Form C-102  
Supersedes C-128  
Effective 1-1-65

All distances must be from the outer boundaries of the Section.

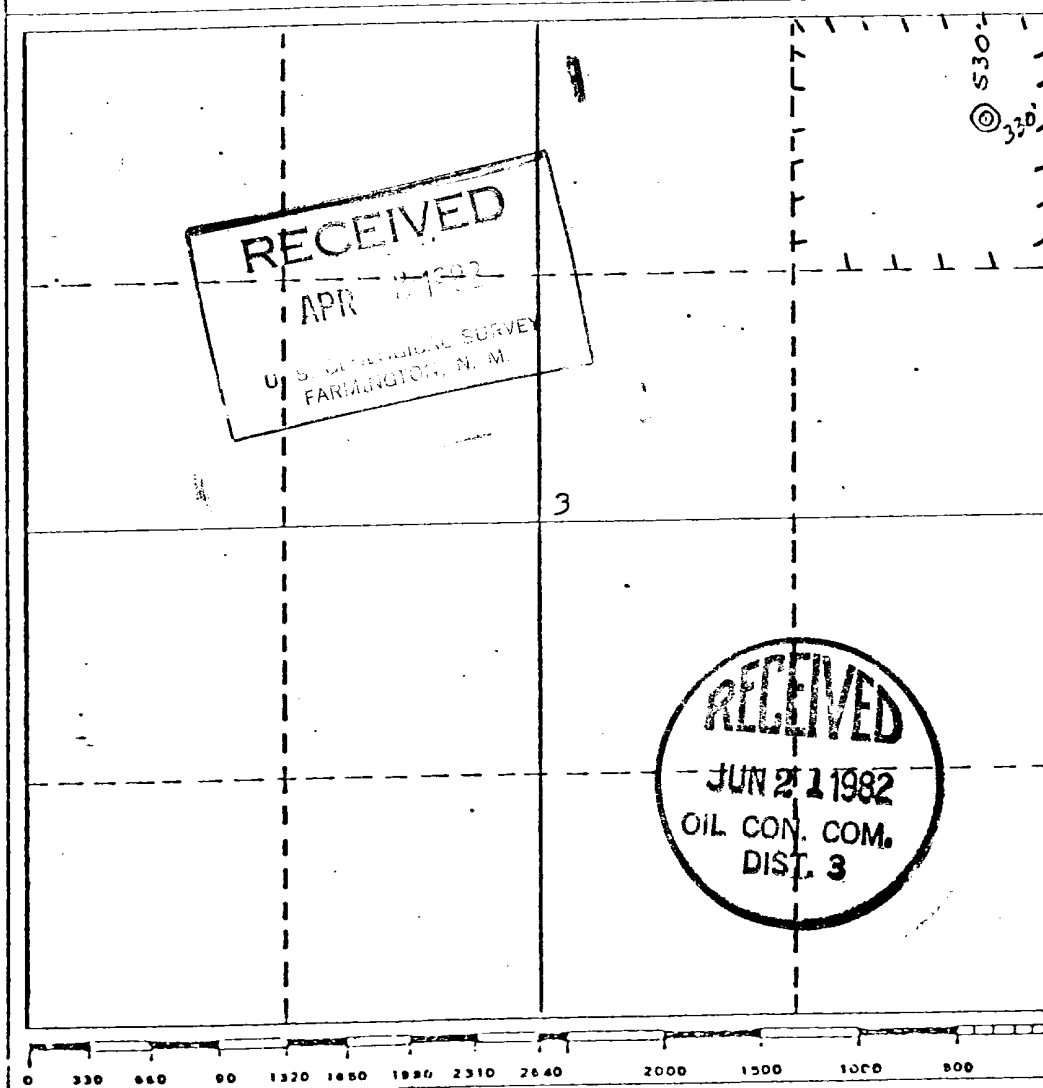
Operator <b>CHACE OIL CO.</b>		Lease <b>JICARILLA 71</b>		Well No. <b>10</b>
Unit Letter <b>A</b>	Section <b>3</b>	Township <b>23 NORTH</b>	Range <b>4 WEST</b>	County <b>RIO ARriba</b>
Actual Footage Location of Well: 530 feet from the NORTH line and 330 feet from the EAST line				
Ground Level Elev. <b>7089</b>	Producing Formation <b>Gallup-Dakota</b>	Pool <b>S. Lindaruth Gallup-Dakota</b>	Dedicated Acreage: <b>35.40</b> Acres	

1. Outline the acreage dedicated to the subject well by colored pencil or hatchure marks on the plat below.
2. If more than one lease is dedicated to the well, outline each and identify the ownership thereof (both as to working interest and royalty).
3. If more than one lease of different ownership is dedicated to the well, have the interests of all owners been consolidated by communitization, unitization, force-pooling, etc?

☐ Yes ☐ No If answer is "yes," type of consolidation \_\_\_\_\_

If answer is "no," list the owners and tract descriptions which have actually been consolidated. (Use reverse side of this form if necessary.) \_\_\_\_\_

No allowable will be assigned to the well until all interests have been consolidated (by communitization, unitization, forced-pooling, or otherwise) or until a non-standard unit, eliminating such interests, has been approved by the Commission.



CERTIFICATION

I hereby certify that the information contained herein is true and complete to the best of my knowledge and belief.

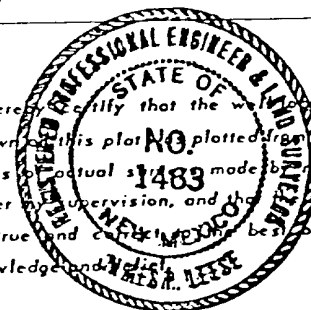
*[Signature]*  
Name  
Geologist

Position  
Chace Oil Co.

Company  
4-1-82

Date

I hereby certify that the well location shown on this plat is plotted from field notes of actual survey made by me or under my supervision, and that same is true and correct to the best of my knowledge and belief.

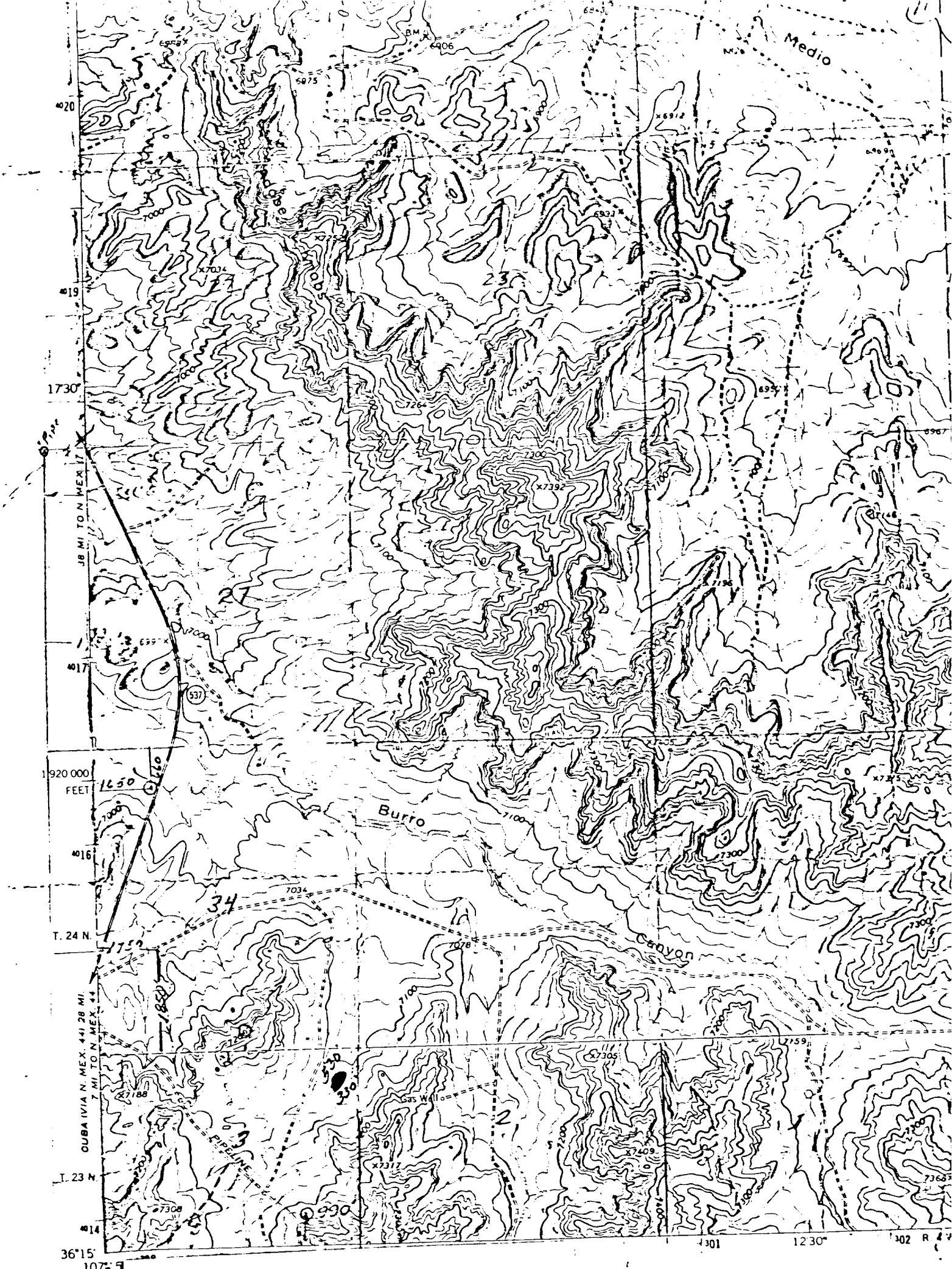


Date Surveyed  
March 11, 1982

Registered Professional Engineer and/or Land Surveyor

*[Signature]*  
James P. Leese

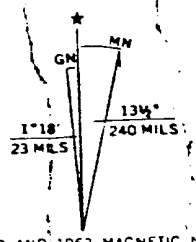
Certificate No.  
1463



CHACE OIL CO.  
NE $\frac{1}{4}$ , Sec. 3, T23N, R4W, N.M.P.M.,  
Rio Arriba County, New Mexico

Polyconic projection 1927 North American datum  
10,000 foot grid based on New Mexico coordinate system, central zone  
1000 meter Universal Transverse Mercator grid ticks,  
zone 13, shown in blue

Fine red dashed lines indicate selected fence lines  
Where omitted, land lines have not been established



UTM GRID AND 1963 MAGNETIC NORTH  
DECLINATION AT CENTER OF SHEET

FOR SALE BY U.  
A FOLD