

UNITED STATES
DEPARTMENT OF THE INTERIOR
GEOLOGICAL SURVEY

APPLICATION FOR PERMIT TO DRILL, DEEPEN, OR PLUG BACK

1a. TYPE OF WORK

DRILL ☒DEEPEN ☐PLUG BACK ☐

b. TYPE OF WELL

OIL
WELL ☒GAS
WELL ☐

OTHER

SINGLE
ZONE ☐MULTIPLE
ZONE ☐

2. NAME OF OPERATOR

Merrion Oil & Gas Corporation

3. ADDRESS OF OPERATOR

P. O. Box 1017, Farmington, New Mexico 87401

4. LOCATION OF WELL (Report location clearly and in accordance with any State requirements.)*

At surface 1650' FSL and 990' FWL

At proposed prod. zone

Same

14. DISTANCE IN MILES AND DIRECTION FROM NEAREST TOWN OR POST OFFICE*

2 miles North of Counselor, New Mexico

15. DISTANCE FROM PROPOSED*

LOCATION TO NEAREST
PROPERTY OR LEASE LINE, FT. 990'
(Also to nearest drlg. unit line, if any)

16. NO. OF ACRES IN LEASE

640 acres

18. DISTANCE FROM PROPOSED LOCATION*

TO NEAREST WELL, DRILLING, COMPLETED,
OR APPLIED FOR, ON THIS LEASE, FT. 2490'

19. PROPOSED DEPTH

5725'

21. ELEVATIONS (Show whether DF, RT, GR, etc.)

6825' GL

23.

PROPOSED CASING AND CEMENTING PROGRAM

SIZE OF HOLE	SIZE OF CASING	WEIGHT PER FOOT	SETTING DEPTH	QUANTITY OF CEMENT
12-1/4"	8-5/8"	20 #/ft.	200'	170 sx.
7-7/8"	4-1/2"	10.5 #/ft.	5725'	875 sx.

Propose to drill 12-1/4" hole to 200 ft. and set 200' 8-5/8" surface w/170 sx. Class B 2% CACL₂ cement. Will drill 7-7/8" hole to TD and run open hole logs. If zone appears productive, will run 5725' 4-1/2" 10.5 #/ft. new production casing and cement w/875 sx. 1st stage 175 sx Class 'H' 2% gel to cover Gallup. Stage tool below Point Lookout @ 4490' est. 2nd stage 600 sx Class 'B' w/2% D-79 followed by 100 sx Class 'H' 2% gel. Will bring cement above Ojo Alamo. Minimum specifications for pressure control equipment is 10" 900 series double ram blow out preventer.

Estimated Tops

San Jose
Ojo Alamo
Pictured Cliffs
Mesa Verde
Gallup

Surface
1470'
2035'
3540'
5313'

IN ABOVE SPACE DESCRIBE PROPOSED PROGRAM: If proposal is to deepen or plug back, give data on present productive zone and proposed new productive zone. If proposal is to drill or deepen directionally, give pertinent data on subsurface locations and measured and true vertical depths. Give blowout preventer program, if any.

24.

SIGNED

TITLE Operations Manager

DATE 6/10/82

(This space for Federal or State office use)

PERMIT NO.

APPROVAL DATE

APPROVED BY

TITLE

DATE

CONDITIONS OF APPROVAL, IF ANY:

JUL 15 1982

OIL CONSERVATION DIVISION

STATE OF NEW MEXICO
ENERGY AND MINERALS DEPARTMENTP. O. BOX 2088
SANTA FE, NEW MEXICO 87501Form C-107
Revised 10-1-78

All distances must be from the outer boundaries of the Section.

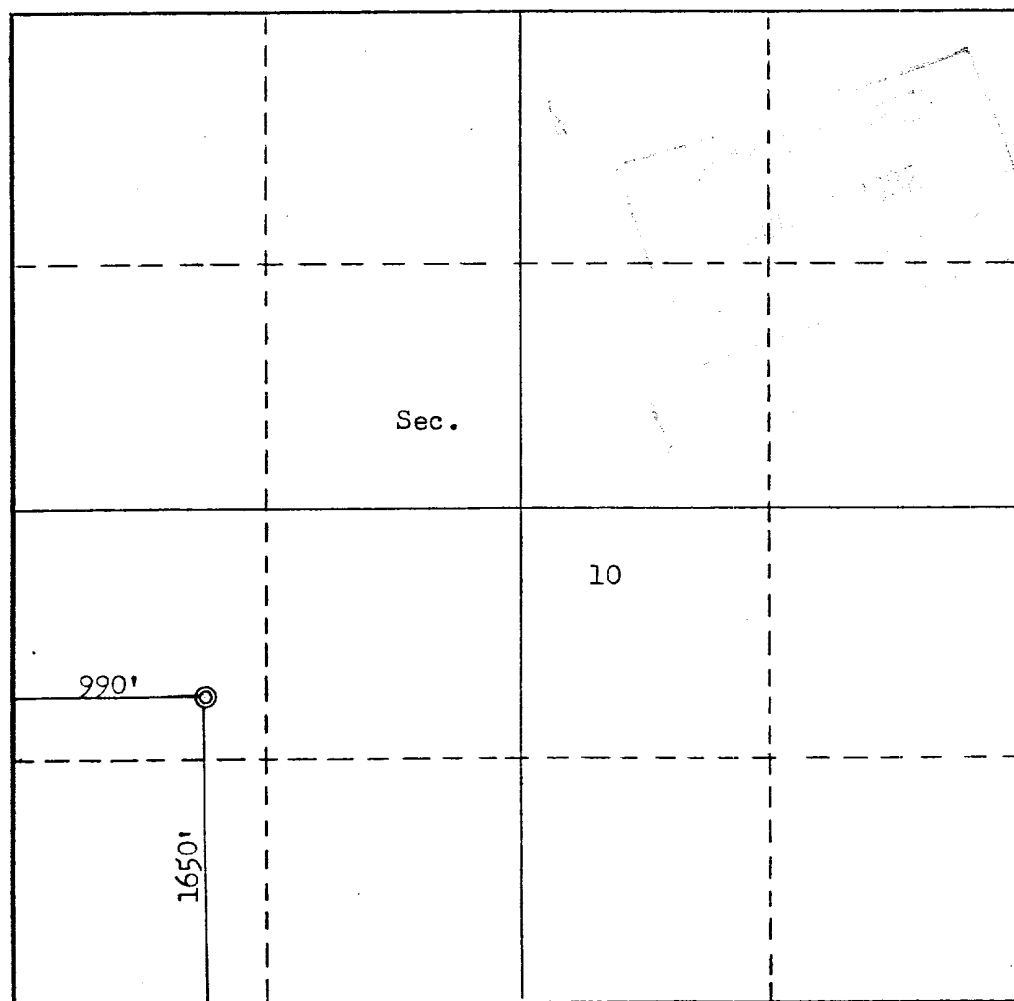
Operator MERRION OIL & GAS CORPORATION			Lease ANNIE		Well No. 1
Unit Letter L	Section 10	Township 23N	Range 6W	County Rio Arriba	
Actual Footage Location of Well: 1650 feet from the South line and 990 feet from the West line					
Ground Level Elev. 6825	Producing Formation Gallup		Pool Under Devils Fork Gallup		Dedicated Acreage: 40 Acres

1. Outline the acreage dedicated to the subject well by colored pencil or hachure marks on the plat below.
2. If more than one lease is dedicated to the well, outline each and identify the ownership thereof (both as to working interest and royalty).
3. If more than one lease of different ownership is dedicated to the well, have the interests of all owners been consolidated by communitization, unitization, force-pooling, etc?

☐ Yes ☐ No If answer is "yes," type of consolidation _____

If answer is "no," list the owners and tract descriptions which have actually been consolidated. (Use reverse side of this form if necessary.) _____

No allowable will be assigned to the well until all interests have been consolidated (by communitization, unitization, forced-pooling, or otherwise) or until a non-standard unit, eliminating such interests, has been approved by the Commission.



CERTIFICATION

I hereby certify that the information contained herein is true and complete to the best of my knowledge and belief.

Name

Steve S. Dunn

Position

Operations Manager

Company

Merrion Oil & Gas Corporation

Date

6/10/82

I hereby certify that the well location shown on this plat was plotted from field notes of actual surveys made by me or under my supervision, and that the same is true and correct to the best of my knowledge and belief.

Date Surveyed

June 2, 1982

Registered Professional Engineer
and/or Land Surveyor
Fred B. Kerr Jr.

Certificate No.

3950

KERR

TATEC
THE INTERIOR
SURVEY

