

Distribution:

Orig+4 (BLM); 1-Crystal; 1-Accounting; 1-Well File

Form 3160-5
(June 1990)

UNITED STATES
DEPARTMENT OF THE INTERIOR
BUREAU OF LAND MANAGEMENT

FORM APPROVED

Budget Bureau No. 1004-0135

Expires: March 31, 1993

5. Lease Designation and Serial No.

NM-28737

6. If Indian, Allottee or Tribe Name

SUNDRY NOTICES AND REPORTS ON WELLS

Do not use this form for proposals to drill or to deepen or reentry to a different reservoir.
Use "APPLICATION FOR PERMIT—" for such proposals

SUBMIT IN TRIPLICATE

1. Type of Well

☒ Oil Well ☐ Gas Well ☐ Other

2. Name of Operator

Merrion Oil & Gas Corporation

3. Address and Telephone No.

P. O. Box 840, Farmington, New Mexico 87499

(505) 327-9801

4. Location of Well (Footage, Sec., T., R., M., or Survey Description)

960' fsl & 1800' fel
Section 10, T23N, R6W

8. Well Name and No.

Annie No. 2

9. API Well No.

30-039-23044

10. Field and Pool, or Exploratory Area

Counselors Gallup-Dakota

11. County or Parish, State

Rio Arriba
New Mexico

12. CHECK APPROPRIATE BOX(s) TO INDICATE NATURE OF NOTICE, REPORT, OR OTHER DATA

TYPE OF SUBMISSION

- ☒ Notice of Intent
☐ Subsequent Report
☐ Final Abandonment Notice

TYPE OF ACTION

- ☒ Abandonment
☐ Recompletion
☐ Plugging Back
☐ Casing Repair
☐ Altering Casing
☐ Other
- ☐ Change of Plans
☐ New Construction
☐ Non-Routine Fracturing
☐ Water Shut-Off
☐ Conversion to Injection
☐ Dispose Water

(Note: Report results of multiple completion on Well Completion or Recompletion Report and Log form.)

13. Describe Proposed or Completed Operations (Clearly state all pertinent details, and give pertinent dates, including estimated date of starting any proposed work. If well is directionally drilled, give subsurface locations and measured and true vertical depths for all markers and zones pertinent to this work.)*

Merrion Oil & Gas Corp. proposes to plug and abandon said well per attached Abandonment Procedure Program. This P&A is contingent on workover to be done this Fall on Rita #3 offset where we will plug back and test the Mesaverde. If we are successful in the Rita #3, the Annie #2 is a candidate for recompletion.

RECEIVED
SEP 5 1994
11 3:59
BLM

RECEIVED
SEP 5 1994
BLM

14. I hereby certify that the foregoing is true and correct

Signed

Title Operations Manager

Date 9/2/94

(This space for Federal or State Office use)

Approved by

Conditions of approval, if any:

APPROVED
AS AMENDED

SEP 5 1994

DISTRICT MANAGER

Title 18 U.S.C. Section 1001, makes it a crime for any person knowingly and willfully to make to any department or agency of the United States any false, fictitious, or fraudulent statement or representations as to any matter within its jurisdiction.

*See instruction on Reverse Side

August 31, 1994

MERRION OIL & GAS CORPORATION

ANNIE #2 (GI)
NW. Sec. 10, T23N, R6W
Rio Arriba County, New Mexico

PLUG AND ABANDONMENT PROCEDURE:

(All cement volumes use 100% excess outside pipe and 50' inside)

1. Install and/or test rig anchors. Prepare blow pit. Comply to all NMOCD, BLM and Merrion safety rules and regulations.
2. MOL and RUSU. Blow well down; kill with water if necessary using an 8.3 ppg plugging fluid. POH and LD rods and pump; hot oil tubing if necessary.
3. ND wellhead and NU BOP and stripping head; test BOP. POH and tally 2-3/8" tubing, visually inspect, if necessary LD tubing and PU work string.
4. **Plug #1 (Gallup perfs):** RIH with open ended tubing to 5667'; pump 25 bbls water down tubing. Mix 70 sacks Class B cement (35% excess due to long plug) and spot a balanced plug from 5667' to 4975'. POH to 3000' and WOC. RIH and tag cement. POH to 3610'.
5. **Plug #2 (MV top):** With tubing at 3610' load well with water and circulate clean. Pressure test casing to 500#. Mix 12 sxs Class B cement and set a balanced plug from 3610' to 3510'. POH to 2107'.
6. **Plug #3 (PC, Kt, Ft & OA tops):** Mix 53 sxs Class B cement and spot balanced plug from 2107' to 1470'. POH and LD tubing.
7. **Plug #5 (Surface):** Perforate 2 holes at 274'. Establish circulation out bradenhead valve. Mix approximately 81 sxs Class B cement and pump down 4-1/2" casing. circulate good cement out bradenhead valve. Shut in well and WOC.
8. ND BOP and cut off well head below surface casing flange and install P&A marker to BLM specs. RD and MOL. Cut off anchors.
9. Restore location per BLM stipulations

MERRION OIL & GAS

ANNIE #2 (GI)
NW, Sec 10, T23N, R6W
Rio Arriba County, NM

Elevation: 6884' KB
Spudded: 10-14-82

8-31-94

EXISTING WELL

Circulate cement
 surface

8-5/8" @ 224'
 (200 cu ft)

TOC 400'
 (T.S.)

OA @ 1520'

Kt @ 1700'

Ft @ 1935'

PC @ 2057'

MV @ 3560'

GI @ 5025'

PBTD 5683'

DV Tool @ 4646'
 (1564 cu ft)

Gallup Perfs
 5025' - 5617'

4-1/2" 10.5# & 11.6# (@ 5735'
 274 cu ft. cement to DV)

HOLE 7-7/8"

WORKOVER HISTORY

Jun '83: Installed rods &
 pumping unit.

Sep '86: Re-stimulate perfs.

Oct '87: Hot oil rods, change out
 pump.

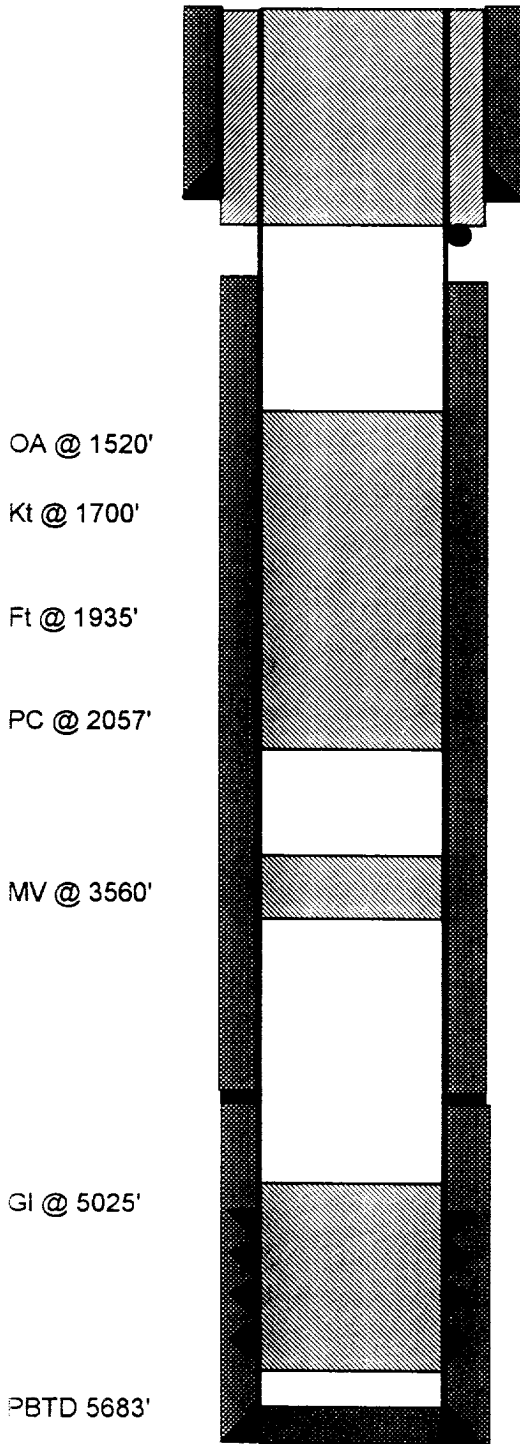
2-3/8" TUBING @ 5038'

MERRION OIL & GAS

8-31-94

Proposed PLUGGED WELL

ANNIE #2 (GI)
NW, Sec. 10, T23N, R6W
Rio Arriba County, NM



Circulate cement
surface

8-5/8" @ 224'
(200 cu ft)

Perforate @ 274'

TOC 400'
(T.S.)

Plug #4 274' - Surface
80 sxs cement

Plug #3 2107' - 1470'
53 sxs cement

Plug #2 3610' - 3510'
12 sxs cement

DV Tool @ 4646'
(1564 cu ft)

Plug #1 5667' - 4975'
70 sxs cement
35% excess
long plug

Gallup Perfs
5025' - 5617'

4-1/2" 10.5# & 11.6# @ 5735'
274 cu ft. cement to DV

HOLE 7-7/8"