

UNITED STATES  
DEPARTMENT OF THE INTERIOR  
GEOLOGICAL SURVEY

## APPLICATION FOR PERMIT TO DRILL, DEEPEN, OR PLUG BACK

## 1a. TYPE OF WORK

DRILL ☒DEEPEN ☐PLUG BACK ☐

## b. TYPE OF WELL

OIL  
WELL ☐GAS  
WELL ☒

OTHER

SINGLE  
ZONE ☒MULTIPLE  
ZONE ☐

## 2. NAME OF OPERATOR

William B. Martin and Associates

## 3. ADDRESS OF OPERATOR

2110 N. Sullivan, Farmington, NM 87401

## 4. LOCATION OF WELL (Report location clearly and in accordance with any State requirements.)

At surface

1090' FNL and 1120' FEL

elev. 6880

At proposed prod. zone

## 14. DISTANCE IN MILES AND DIRECTION FROM NEAREST TOWN OR POST OFFICE\*

18 miles NW of Cuba

## 15. DISTANCE FROM PROPOSED\*

LOCATION TO NEAREST

PROPERTY OR LEASE LINE, FT.

(Also to nearest drlg. unit line, if any)

4160' E

## 18. DISTANCE FROM PROPOSED LOCATION\*

TO NEAREST WELL, DRILLING, COMPLETED,  
OR APPLIED FOR, ON THIS LEASE, FT.

2580' S

## 16. NO. OF ACRES IN LEASE

+ 2238

## 19. PROPOSED DEPTH

2630'

## 17. NO. OF ACRES ASSIGNED

160

## 20. ROTARY OR CABLE TOOLS

Rotary

## 21. ELEVATIONS (Show whether DF, RT, GR, etc.)

GR 6882

## 22. APPROX. DATE WORK WILL START\*

## 23.

## PROPOSED CASING AND CEMENTING PROGRAM

SIZE OF HOLE	SIZE OF CASING	WEIGHT PER FOOT	SETTING DEPTH	QUANTITY OF CEMENT
8 3/4"	7" OD	17.00	100'	50 sacks (64 cu. ft)
5 5/8"	2 7/8" OD	6.5	2630'	150 sacks (192 cu. ft)

Proposed Program: Drill to Pictured Cliffs Formation with  
5 5/8" bit using low solids - low water loss mud system.  
Run open hole logs. If productive run 2 7/8" OD production  
string - selectively perforate and acidize. Complete  
and run tests (natural flow). If justifiable, stimulate  
with a nitrogen foam frac.

IN ABOVE SPACE DESCRIBE PROPOSED PROGRAM: If proposal is to deepen or plug back, give data on present productive zone and proposed new productive zone. If proposal is to drill or deepen directionally, give pertinent data on subsurface locations and measured and true vertical depths. Give blowout preventer program, if any.

## 24.

SIGNED

*W.B. Martin*

TITLE Operator

DATE 09/09/82

(This space for Federal or State office use)

PERMIT NO.

APPROVAL DATE

APPROVED BY

TITLE

CONDITIONS OF APPROVAL, IF ANY:

*oh 7*APPROVED  
AS AMENDED

OCT 18 1982

JAMES F.  
DISTRICT ENGINEER

All distances must be from the outer boundaries of the Section.

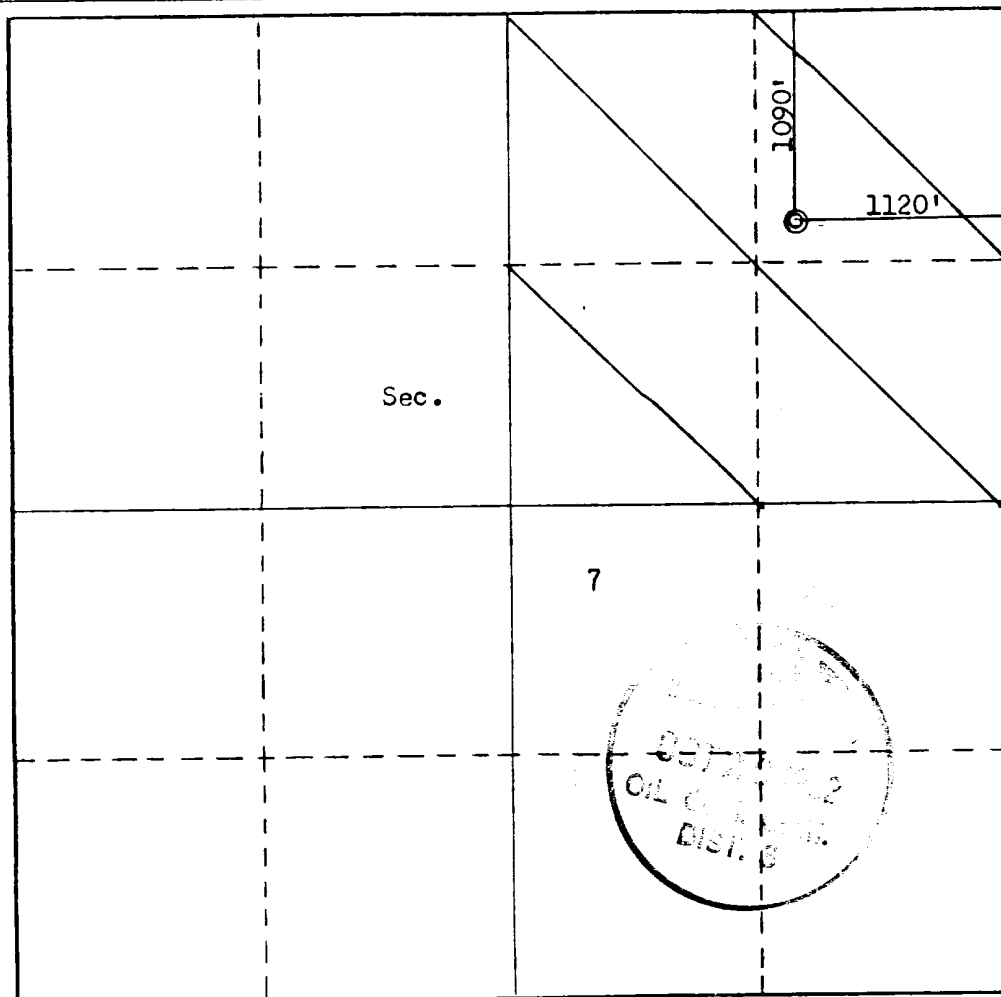
Operator <b>W. B. MARTIN &amp; ASSOCIATES</b>			Lease <b>MARTIN-FLORANCE</b>		Well No. <b>5</b>
Unit Letter <b>A</b>	Section <b>7</b>	Township <b>23N</b>	Range <b>LW</b>	County <b>Rio Arriba</b>	
Actual Footage Location of Well:					
1090 feet from the North line and		1120 feet from the East line			
Ground Level Elev. <b>6882</b>	Producing Formation <b>Pictured Cliffs</b>	Pool <b>Ballard P.C.</b>	Dedicated Acreage: <b>160</b> Acres		

1. Outline the acreage dedicated to the subject well by colored pencil or hachure marks on the plat below.
2. If more than one lease is dedicated to the well, outline each and identify the ownership thereof (both as to working interest and royalty).
3. If more than one lease of different ownership is dedicated to the well, have the interests of all owners been consolidated by communitization, unitization, force-pooling, etc?

☐ Yes ☐ No If answer is "yes," type of consolidation \_\_\_\_\_

If answer is "no," list the owners and tract descriptions which have actually been consolidated. (Use reverse side of this form if necessary.) \_\_\_\_\_

No allowable will be assigned to the well until all interests have been consolidated (by communitization, unitization, forced-pooling, or otherwise) or until a non-standard unit, eliminating such interests, has been approved by the Commission.



CERTIFICATION

I hereby certify that the information contained herein is true and complete to the best of my knowledge and belief.

Name  
**W.B. Martin**  
Position  
**Operator**  
Company

Date  
**9/9/82**

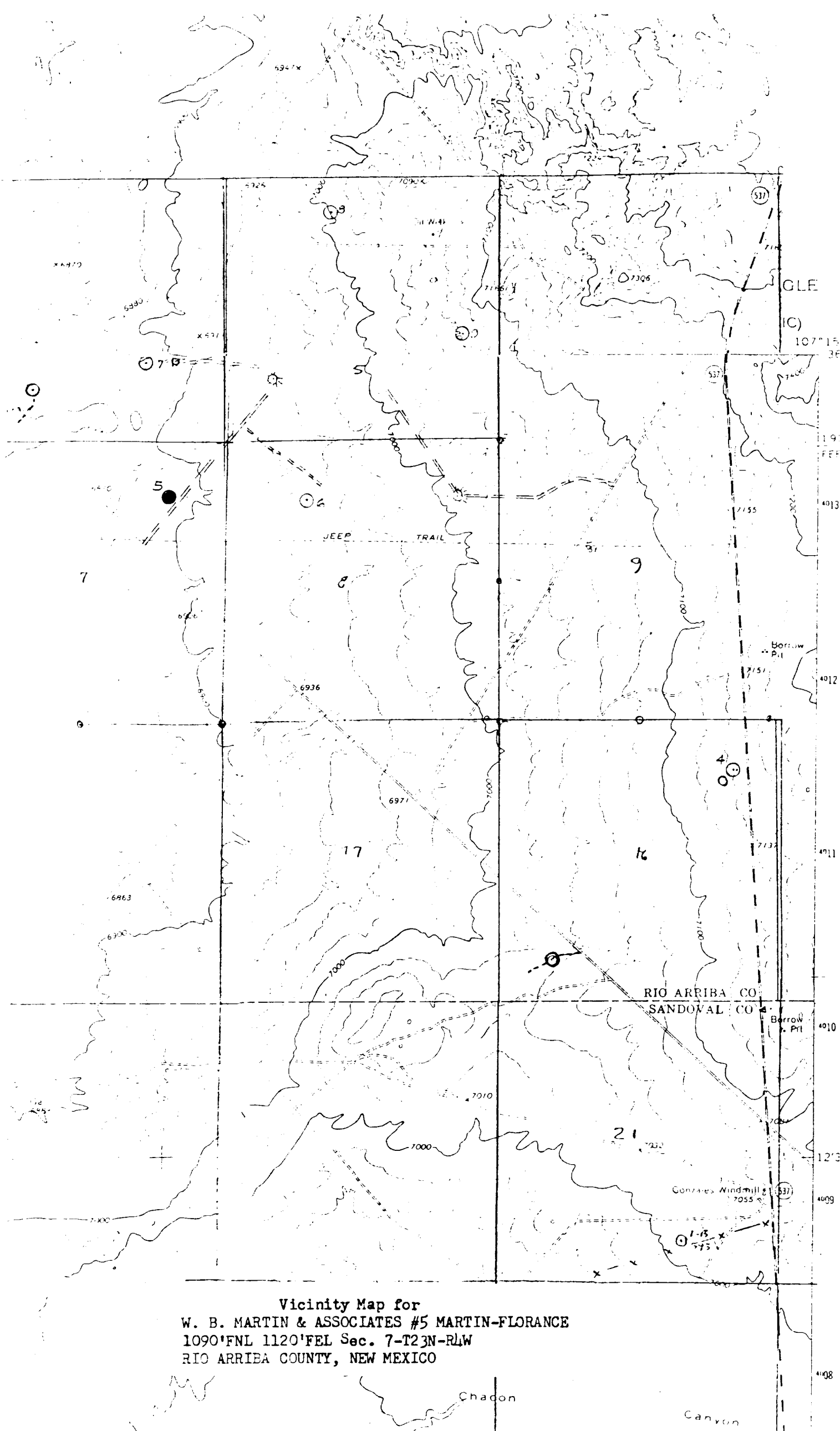
I hereby certify that the well location shown on this plat was plotted from field notes of actual surveys made by me or under my supervision, and that the same is true and correct to the best of my knowledge and belief.

Date Surveyed  
**August 28, 1982**  
Registered Professional Engineer and/or Land Surveyor  
**Fred E. Kerr Jr.**

Certificate No.

**3950**

0 330 660 990 1320 1650 1980 2310 2640 2000 1500 1000 500 0



Vicinity Map for  
W. B. MARTIN & ASSOCIATES #5 MARTIN-FLORANCE  
1090'FNL 1120'FEL Sec. 7-T23N-RLW  
RIO ARRIBA COUNTY, NEW MEXICO

RECEIVED  
SEP 11 1982

## SUNDRY NOTICES AND REPORTS ON WELLS

1. oil well ☐ gas well ☒ other ☐

2. NAME OF OPERATOR

W. B. Martin & Associates, Inc.

### 3. ADDRESS OF OPERATOR

2110 North Sullivan, Farmington, NM 87401

4. LOCATION OF WELL (REPORT LOCATION CLEARLY. See space 17 below.)

AT SURFACE: 1090' FNL and 1120' FEL

AT TOP PROD. INTERVAL:

AT TOTAL DEPTH:

16. CHECK APPROPRIATE BOX TO INDICATE NATURE OF NOTICE, REPORT, OR OTHER DATA

REQUEST FOR APPROVAL TO:

### TEST WATER SHUT-OFF

## FRACTURE TREAT

SHOOT OR ACIDIZE

REPAIR WELL.

PULL OR ALTER CASING

MULTIPLE COMPLETE

## CHANGE ZONES

ABANDON\*

(other)

SUBSEQUENT REPORT OF:

RECEIVED (NOTE: Report results of multiple completion or zone change on Form 9-330.)

OCT 14 1983

21 1983

BUREAU OF LAND MANAGEMENT  
FARMINGTON RESOURCE AREA

CON. DIV.

~~SECRET~~

17. DESCRIBE PROPOSED OR COMPLETED OPERATIONS (Clearly state all pertinent details, and give pertinent dates, including estimated date of starting any proposed work. If well is directionally drilled, give subsurface locations and measured and true vertical depths for all markers and zones pertinent to this work).\*

Request a six month drilling extension.

extended to 4/18/89

Subsurface Safety Valve: Manu. and Type

Set @ \_\_\_\_\_ Ft.

18. I hereby certify that the foregoing is true and correct

SIGNED

TITLE Operator

DATE 10/13/83

(This space for Federal or State office use)

APPROVED BY

TITLE

DATE \_\_\_\_\_

CONDITIONS OF APPROVAL, IF ANY:

\* See Instructions on Reverse Side

NM 20

APPROVED

09 1 9 1983

KB  
Rtaz

Caller Service 4104  
Farmington, New Mexico 87499

CERTIFIED

27 APR 1984

W. B. Martin and Associates  
2110 North Sullivan  
Farmington, New Mexico 87401

Gentlemen:

Reference is made to your Applications for Permit to Drill (APDs) for the following wells:

1. No. 3 Martin Florence, NE/4SW/4 sec. 15, T. 23 N., R. 4 W., Rio Arriba County, New Mexico, Jicarilla Contract 398.
2. No. 5 Martin Florence, NE/4SE/4 sec. 7, T. 23 N., R. 4 W., Rio Arriba County, New Mexico, Jicarilla Contract 362.
3. No. 6 Martin Florence, NE/4NE/4 sec. 8, T. 23 N., R. 4 W., Rio Arriba County, New Mexico, Jicarilla Contract 362.
4. No. 10 Martin Florence, SW/4SW/4 sec. 16, T. 23 N., R. 4 W., Rio Arriba County, New Mexico, Jicarilla Contract 398.

The subject APDs are hereby rescinded and returned due to drilling operations not being commenced within a six month extension period following the original approval date.

You are required to request surface rehabilitation instructions from this Office if construction activities occurred on the referenced drill sites. If this Office does not receive comment within 15 days, it will presume that no construction occurred and proceed accordingly. Later discovery that construction activities have in fact occurred, will result in an assessment.

Sincerely yours,

Area Manager

cc: BIA, Dulce  
NMOCC

RECEIVED

APR 30 1984

OIL CON. DIV.  
DIST. 3

ABANDONED LOCATION