

UNITED STATES  
DEPARTMENT OF THE INTERIOR  
GEOLOGICAL SURVEY30-039-23100  
5. LEASE DESIGNATION AND SERIAL NO.

Contract #398

6. IF INDIAN, ALLOTTEE OR TRIBE NAME  
Jicarilla Apache

7. UNIT AGREEMENT NAME

8. FARM OR LEASE NAME

9. WELL NO.

#10 Martin-Florance

10. FIELD AND POOL, OR WILDCAT

Ballard P.C.

11. SEC., T., R., M., OR BLK.  
AND SURVEY OR AREA

SW SW 16

T23N R4W

12. COUNTY OR PARISH 13. STATE

Rio Arriba

NM

## 1a. TYPE OF WORK

DRILL ☒DEEPEN ☐PLUG BACK ☐

## b. TYPE OF WELL

OIL  
WELL ☐GAS  
WELL ☒

OTHER

SINGLE  
ZONE ☒MULTIPLE  
ZONE ☐

## 2. NAME OF OPERATOR

William B. Martin and Associates

## 3. ADDRESS OF OPERATOR

2110 N. Sullivan, Farmington, NM 87401

## 4. LOCATION OF WELL (Report location clearly and in accordance with any State requirements.)

At surface

800' FSL and 990' FWL

At proposed prod. zone

## 14. DISTANCE IN MILES AND DIRECTION FROM NEAREST TOWN OR POST OFFICE\*

16 miles NW of Cuba

## 15. DISTANCE FROM PROPOSED\*

LOCATION TO NEAREST

PROPERTY OR LEASE LINE, FT.

(Also to nearest drig. unit line, if any)

800'

## 16. NO. OF ACRES IN LEASE

+ 1280

## 18. DISTANCE FROM PROPOSED LOCATION\*

TO NEAREST WELL, DRILLING, COMPLETED,

OR APPLIED FOR, ON THIS LEASE, FT.

4780'

## 19. PROPOSED DEPTH

2700'

## 17. NO. OF ACRES ASSIGNED

TO THIS WELL

160

## 20. ROTARY OR CABLE TOOLS

Rotary

## 21. ELEVATIONS (Show whether DF, RT, GR, etc.)

GR 7027

## 22. APPROX. DATE WORK WILL START\*

## 23. PROPOSED CASING AND CEMENTING PROGRAM

SIZE OF HOLE	SIZE OF CASING	WEIGHT PER FOOT	SETTING DEPTH	QUANTITY OF CEMENT
8 3/4"	7" OD	17.00	100'	50 sacks (64 cu.ft)
5 5/8"	2 7/8" OD	6.5	2700'	150 sacks (192 cu.ft)

Proposed Program: Drill to Pictured Cliffs Formation with  
5 5/8" bit using low solids - low water loss mud  
system. Run open hole logs. If productive run 2 7/8"  
OD production string - selectively perforate and  
acidize. Complete and run tests (natural flow).  
If justifiable, stimulate with a nitrogen foam fract

IN ABOVE SPACE DESCRIBE PROPOSED PROGRAM: If proposal is to deepen or plug back, give data on present productive zone and proposed new productive zone. If proposal is to drill or deepen directionally, give pertinent data on subsurface locations and measured and true vertical depths. Give blowout preventer program, if any.

24.

SIGNED

W. B. Martin

TITLE

Operator

DATE

09/09/82

(This space for Federal or State office use)

PERMIT NO.

APPROVAL DATE

APPROVED  
AS AMENDED

APPROVED BY

TITLE

DATE

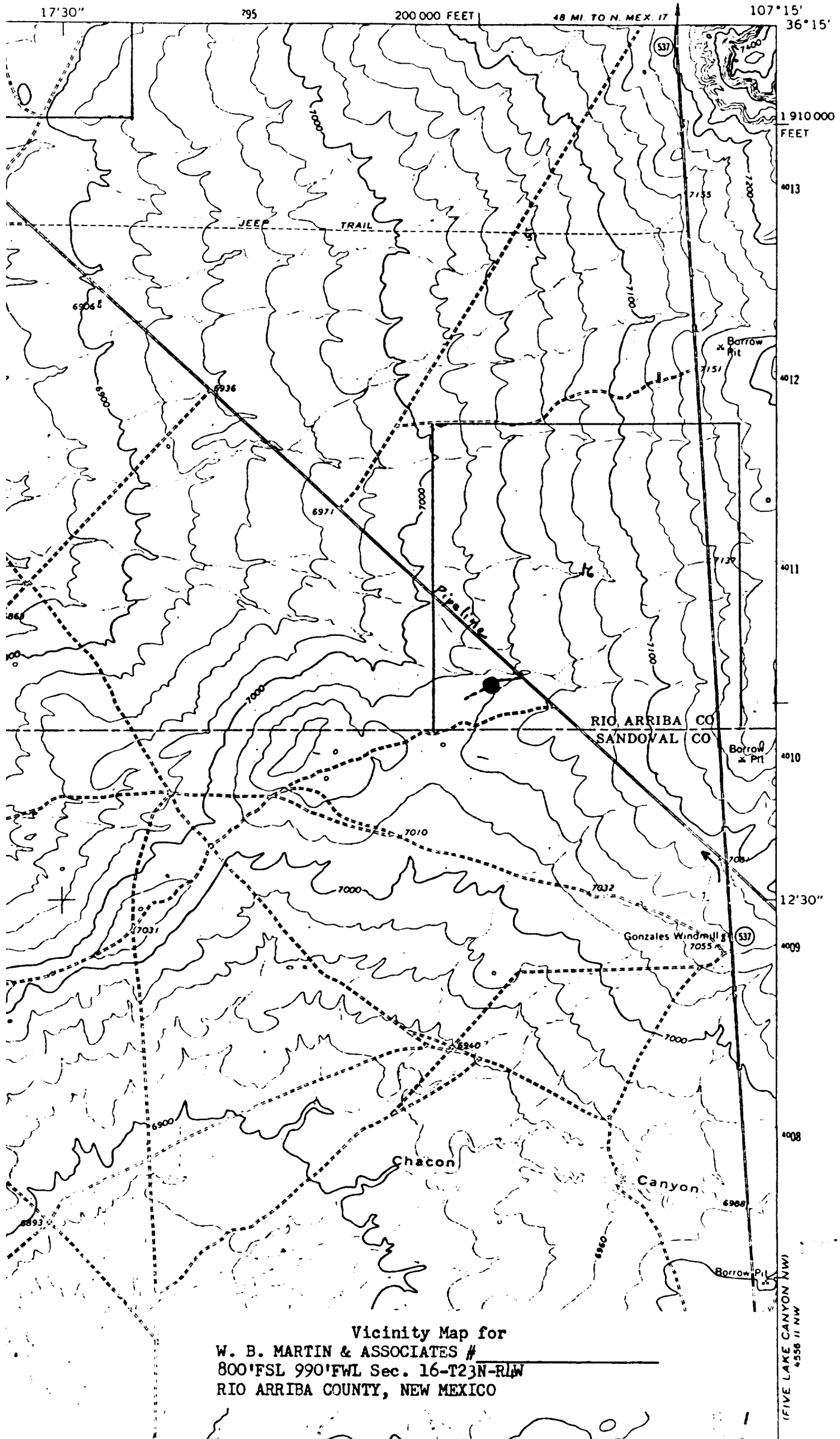
OCT 18 1982

CONDITIONS OF APPROVAL, IF ANY:

JAMES F. ...  
DISTRICT ENGINEER

TANCOSA WINDMILL QUADRANGLE  
NEW MEXICO  
7.5 MINUTE SERIES (TOPOGRAPHIC)

4356 1 SW  
BILLY RICE CANYON



Vicinity Map for  
W. B. MARTIN & ASSOCIATES #  
800'FSL 990'FWL Sec. 16-T23N-RLW  
RIO ARriba COUNTY, NEW MEXICO

(FIVE LAKE CANYON NW)  
4356 11 NW

RECEIVED  
SEP 14 1982  
U. S. GOVERNMENT PRINTING OFFICE  
WASHINGTON, D. C.

## OIL CONSERVATION DIVISION

STATE OF NEW MEXICO  
ENERGY AND MINERALS DEPARTMENTP. O. BOX 2088  
SANTA FE, NEW MEXICO 87501Form C-102  
Revised 10-1-7

All distances must be from the outer boundaries of the Section.

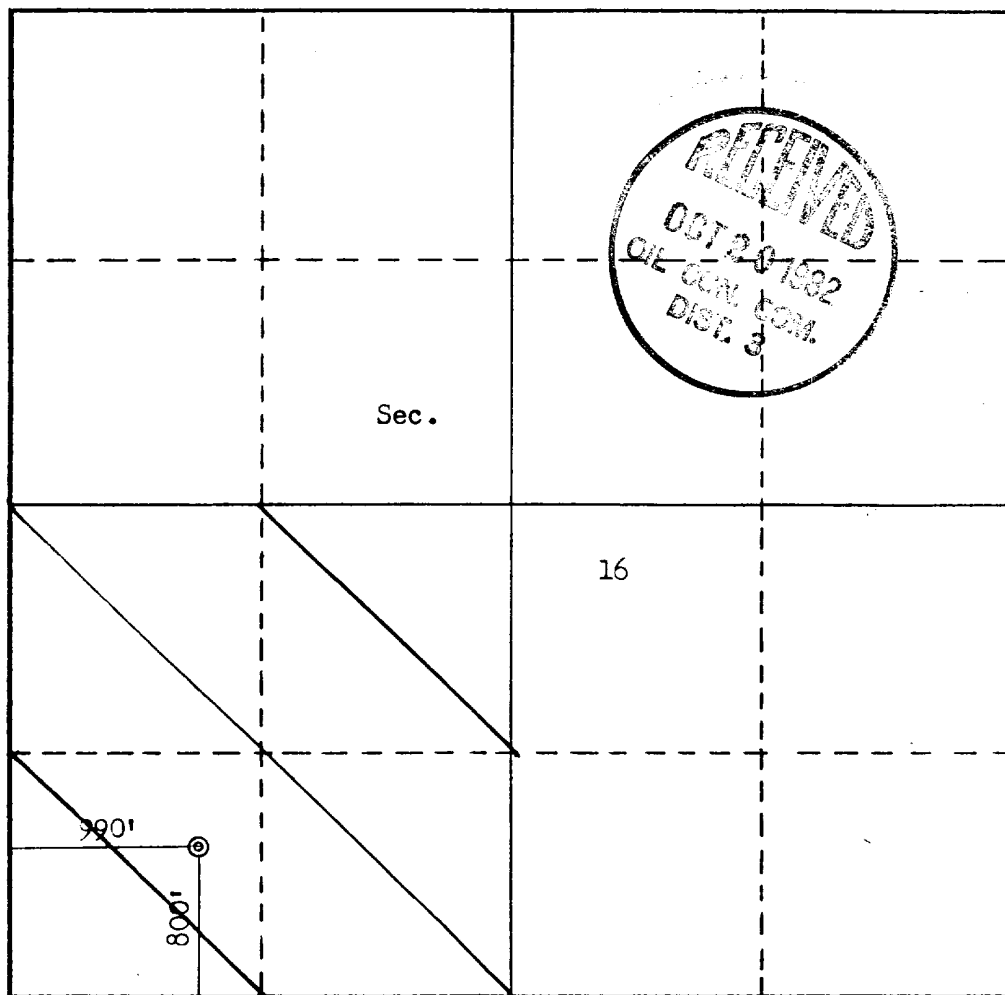
Operator W. B. Martin & Associates			Lease Martin - Florence		Well No. 10
Unit Letter M	Section 16	Township 23N	Range 4W	County Rio Arriba	
Actual Footage Location of Well: 800 feet from the South line and 990 feet from the West line					
Ground Level Elev. 7027	Producing Formation Pictured Cliffs		Pool Ballard P.C.	Dedicated Acreage: 160 Acres	

1. Outline the acreage dedicated to the subject well by colored pencil or hachure marks on the plat below.
2. If more than one lease is dedicated to the well, outline each and identify the ownership thereof (both as to working interest and royalty).
3. If more than one lease of different ownership is dedicated to the well, have the interests of all owners been consolidated by communitization, unitization, force-pooling, etc?

☐ Yes ☐ No If answer is "yes," type of consolidation \_\_\_\_\_

If answer is "no," list the owners and tract descriptions which have actually been consolidated. (Use reverse side of this form if necessary.) \_\_\_\_\_

No allowable will be assigned to the well until all interests have been consolidated (by communitization, unitization, forced-pooling, or otherwise) or until a non-standard unit, eliminating such interests, has been approved by the Commission.



## CERTIFICATION

I hereby certify that the information contained herein is true and complete to the best of my knowledge and belief.

Name

W. B. Martin

Position

Operator

Company

Date

9/9/82

I hereby certify that the well location shown on this plat was plotted from field notes of actual surveys made by me or under my supervision, and that the same is true and correct to the best of my knowledge and belief.

Date Surveyed

March 1982  
Registered Professional Engineer  
and/or Land Surveyor

Fred B. Kerr Jr.  
Certificate No.

3950