

UNITED STATES
DEPARTMENT OF THE INTERIOR
GEOLOGICAL SURVEY

30-039-23193

5. LEASE DESIGNATION AND SERIAL NO.

Contract #362

6. IF INDIAN, ALLOTTEE OR TRIBE NAME

Jicarilla Apache

7. UNIT AGREEMENT NAME

8. FARM OR LEASE NAME

Martin Florence

9. WELL NO.

#11 Martin-Florence

10. FIELD AND POOL, OR WILDCAT

South Lindrith Gallup

11. SEC., T., R., M., OR BLK.

Dakota Extension

12. COUNTY OR PARISH

Rio Arriba

13. STATE

N. M.

14. DISTANCE IN MILES AND DIRECTION FROM NEAREST TOWN OR POST OFFICE*

18.5 Miles NW of Cuba

15. DISTANCE FROM PROPOSED*
LOCATION TO NEAREST
PROPERTY OR LEASE LINE, FT.
(Also to nearest drig. unit line, if any) 3300' W

16. NO. OF ACRES IN LEASE

+ 2238

17. NO. OF ACRES ASSIGNED
TO THIS WELL

40

18. DISTANCE FROM PROPOSED LOCATION*
TO NEAREST WELL, DRILLING, COMPLETED,
OR APPLIED FOR, ON THIS LEASE, FT. 1320' NW

19. PROPOSED DEPTH

1200'

20. ROTARY OR CABLE TOOLS

Rotary

21. ELEVATIONS (Show whether DF, RT, GR, etc.)

Gr. 6971

DRILLING OPERATIONS AUTHORIZED ARE
SUBJECT TO COMPLIANCE WITH ATTACHED

22. APPROX. DATE WORK WILL START*

April 1, 1983

23. "GENERAL REQUIREMENTS" AND CEMENTING PROGRAM

This action is subject to administrative
appeal pursuant to 20 CFR 290.

QUANTITY OF CEMENT

SIZE OF HOLE	SIZE OF CASING	WEIGHT PER FOOT	SETTING DEPTH	QUANTITY OF CEMENT
12 1/4"	8 5/8" OD J55	24 lbs	250'	200 sks (236 ft ³)
7 7/8"	5 1/2" OD J55	17.00	7200'	See Operation Plan

Proposed Program: 1. Drill 12 1/4" hole to +250'. Run and set 8 5/8" casing.
Circulate Cement to surface.

2. WOC 12 hours.

3. Install and Pressure Test BOP to 1000 psig.

4. Drill 7 7/8" hole to T.D. using low solids-low water loss mud.

5. Run and set 5 1/2" casing with stage collars and cement.

6. Selectively perforate and stimulate Gallup and Dakota Formation.

IN ABOVE SPACE DESCRIBE PROPOSED PROGRAM: If proposal is to deepen or plug back, give data on present productive zone and proposed new productive zone. If proposal is to drill or deepen directionally, give pertinent data on subsurface locations and measured and true vertical depths. Give blowout preventer program, if any.

24. SIGNED W.B. Martin TITLE Operator DATE March 7, 1983

(This space for Federal or State office use)

PERMIT NO. RECEIVED APPROVAL DATE APR 10 1983APPROVED BY James F. Smith DATE APR 10 1983

CONDITIONS OF APPROVAL, IF ANY:

OIL CORP. DIV.
DIST. 3

ak7

RECEIVED

OIL CONSERVATION DIVISION

STATE OF NEW MEXICO
OIL AND MINERALS DEPARTMENTP. O. BOX 2088
SANTA FE, NEW MEXICO 87501Form C-107
Revised 10-1-78

All distances must be from the outer boundaries of the Section.

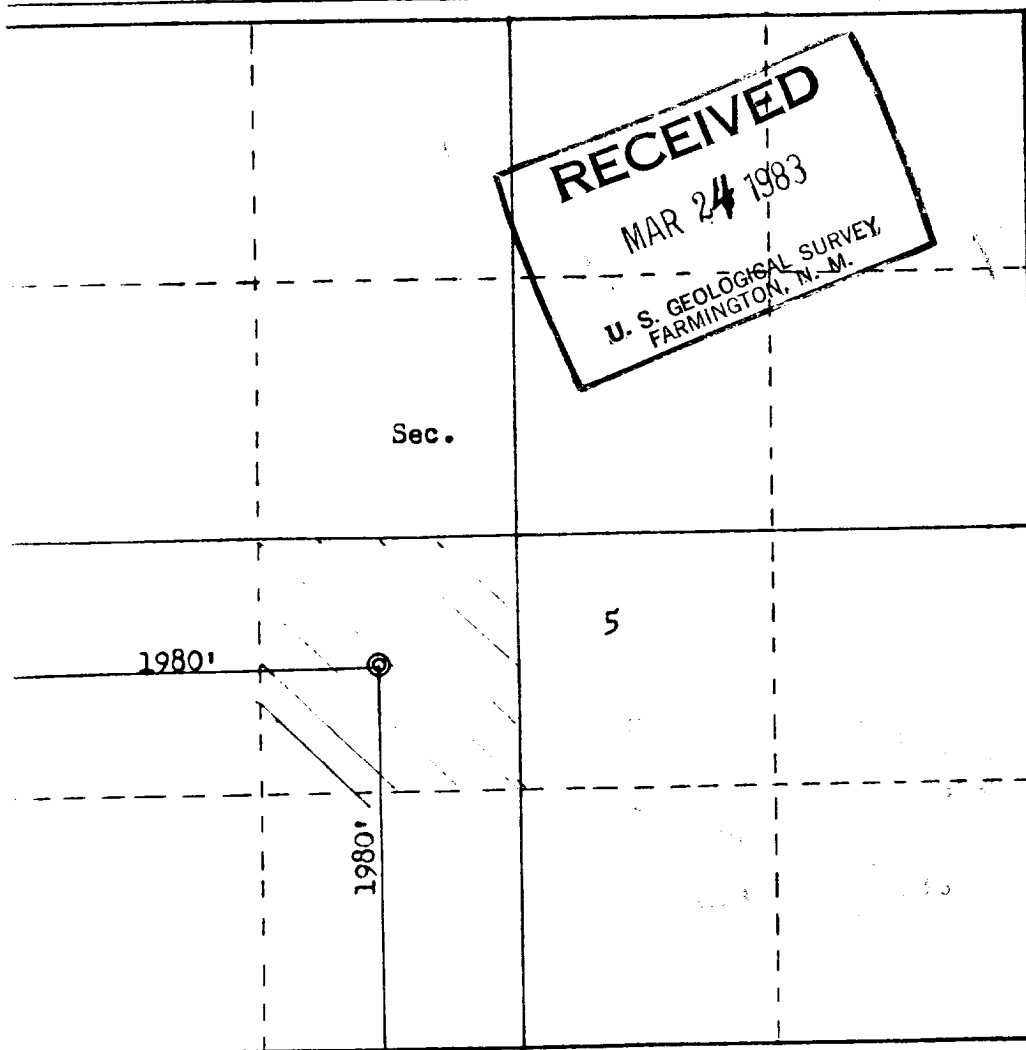
Operator W. B. MARTIN & ASSOCIATES			Lease MARTIN-FLORANCE		Well No. 11
Unit Letter K	Section 5	Township 23N	Range 4W	County Rio Arriba	
Actual Footage Location of Well: 1980 feet from the South line and 1980 feet from the West line Ground Level Elev: 6971 Producing Formation Gallup-Dakota Comingled Pool South Lindrith Gallup Dakota EXT Dedicated Acreage: 40 Acres					

1. Outline the acreage dedicated to the subject well by colored pencil or hachure marks on the plat below.
2. If more than one lease is dedicated to the well, outline each and identify the ownership thereof (both as to working interest and royalty).
3. If more than one lease of different ownership is dedicated to the well, have the interests of all owners been consolidated by communitization, unitization, force-pooling, etc?

☐ Yes ☒ No If answer is "yes," type of consolidation _____

If answer is "no," list the owners and tract descriptions which have actually been consolidated. (Use reverse side of this form if necessary.) _____

No allowable will be assigned to the well until all interests have been consolidated (by communitization, unitization, forced-pooling, or otherwise) or until a non-standard unit, eliminating such interests, has been approved by the Commission.



Scale: 1"=1000'

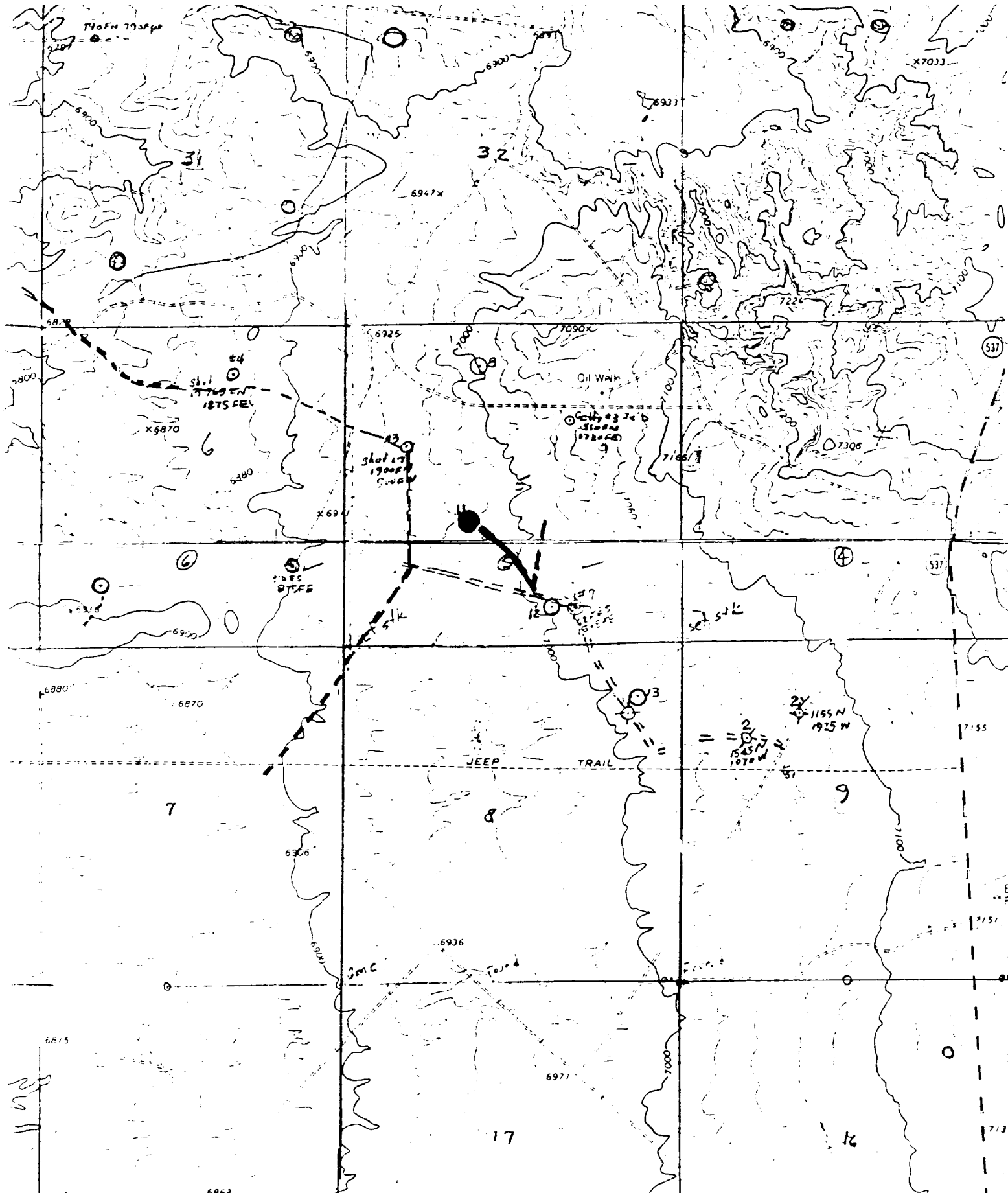
CERTIFICATION

I hereby certify that the information contained herein is true and complete to the best of my knowledge and belief.

Name Billy Martin
 Position Operator Representative
 Company W B Martin & Associates
 Date 3/16/83

I hereby certify that the well location shown on this plat was plotted from field notes of actual surveys made by me or under my supervision, and that the same is true and correct to the best of my knowledge and belief.

Date Surveyed March 1, 1983
 Registered Professional Engineer and Land Surveyor
Fred B. Kerr Jr.
 Certificate No. 3950



Vicinity Map for
W. B. MARTIN & ASSOCIATES #11 MARTIN-FLORANCE
1980'FSL 1980'FWL Sec. 5-T23N-R1W
RIO ARriba COUNTY, NEW MEXICO