

UNITED STATES
DEPARTMENT OF THE INTERIOR
GEOLOGICAL SURVEY

APPLICATION FOR PERMIT TO DRILL, DEEPEN, OR PLUG BACK

1a. TYPE OF WORK

DRILL ☒DEEPEN ☐PLUG BACK ☐

b. TYPE OF WELL

OIL
WELL ☒GAS
WELL ☐OTHER ☐SINGLE
ZONE ☐MULTIPLE
ZONE ☒

2. NAME OF OPERATOR

Chace Oil Company, Inc.

3. ADDRESS OF OPERATOR

313 Washington, SE, Albuquerque, New Mexico 87108

4. LOCATION OF WELL (Report location clearly and in accordance with any State requirements)

At surface

Unit 'O' 710' FSL & 1749' FEL

At proposed prod. zone

14. DISTANCE IN MILES AND DIRECTION FROM NEAREST TOWN OR POST OFFICE*

12 miles SW of Lindrith, New Mexico

15. DISTANCE FROM PROPOSED*
LOCATION TO NEAREST
PROPERTY OR LEASE LINE, FT.
(Also to nearest drig. unit line, if any)1749' Lease Line
429' Unit Line18. DISTANCE FROM PROPOSED LOCATION*
TO NEAREST WELL, DRILLING, COMPLETED,
OR APPLIED FOR, ON THIS LEASE, FT.

1300'

21. ELEVATIONS (Show whether DF, RT, GR, etc.)

7225' GL

23. "GENERAL REQUIREMENTS"
PROPOSED DRILLING AND CEMENTING PROGRAM

SIZE OF HOLE	SIZE OF CASING	WEIGHT PER FOOT	SETTING DEPTH	QUANTITY OF CEMENT
9 3/4"	8 5/8"	22# (J-55)	225'	225 sxs (405 CF) Class B cement.
7 7/8"	4 1/2"	11.6# (n 80)	7535'	1st stage: 750 sxs (1350 CF) 50/50 pozmix. 2nd stage: 520 sxs (936 CF) 40/60 pozmix, 12% gel. 40 sxs (72 CF) Class B cement.

Drill 230' of 9 3/4" surface hole. Set 225' of 8 5/8" casing. Cement to surface with 225 sxs (405 CF) cement. Use an oil base mud, (15% oil), and Schaeffer 5000# standard doublegate hydraulic BOP. Drill 7 7/8" hole to 7535' to test Dakota formation.

Wasatch formation on surface. Estimated tops: Ojo-2510'; Pictured Cliffs-2975'; Chacra-3325'; Cliff House-4510'; Pt. Lookout-5035'; Gallup-6145'; Tocito-6815'; Greenhorn-7100'; Dakota 'A'-7190'; Dakota 'D'-7330'; Burro Canyon-7435'.

D. V. Tool @ 3025'. Float Collar @ 7505'.

RECEIVED

APR 22 1983

IN ABOVE SPACE DESCRIBE PROPOSED PROGRAM: If proposal is to deepen or plug back, give location of present productive zone and proposed new productive zone. If proposal is to drill or deepen directionally, give pertinent data on subsurface location and measured and true vertical depths. Give blowout preventer program, if any.

24.

SIGNED

TITLE Geologist

DATE

4-19-83

(This space for Federal or State office use)

PERMIT NO.

APPROVAL DATE

APPROVED BY

TITLE Asst. Dir. Mgmt.

DATE

CONDITIONS OF APPROVAL, IF ANY:

*See Instructions On Reverse Side

RECEIVED
OIL CON. DIV.
DIST. 3

APR 14 1983

J. L. F. SMITH
DIST. 3

**NEW MEXICO OIL CONSERVATION COMMISSION
WELL LOCATION AND ACREAGE DEDICATION PLAT**

Form C-102
Supersedes C-128
Effective 1-1-65

All distances must be from the outer boundaries of the Section.

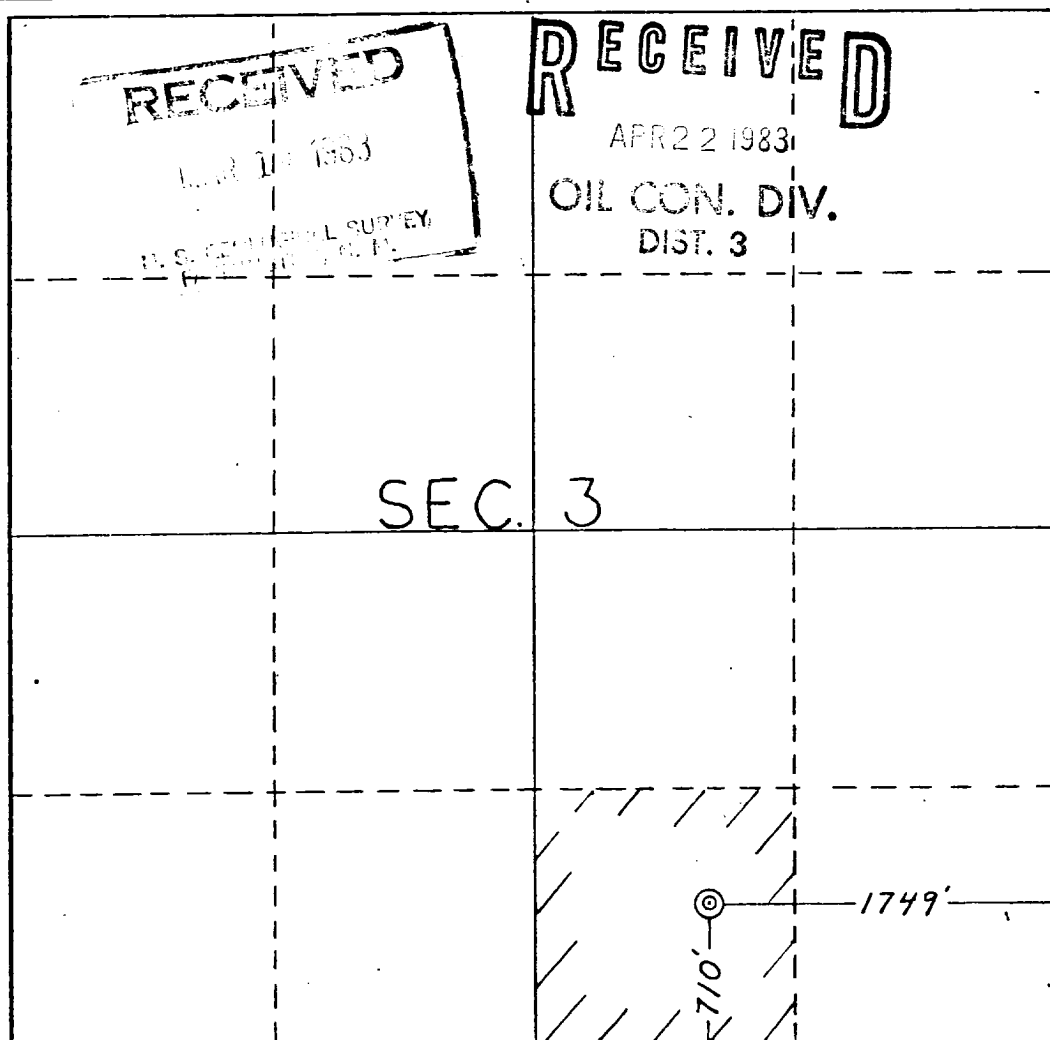
Operator CHACE OIL COMPANY, INC.			Lease JICARILLA TRIBAL #71		Well No. 2-19
Unit Letter O	Section 3	Township 23N.	Range 4W.	County RIO ARRIBA	
Actual Footage Location of Well: 1749 feet from the EAST line and 710 feet from the SOUTH line					
Ground Level Elev. 7225	Producing Formation GALLUP-DAKOTA		Pool S. LINDRITH GALLUP-DAKOTA		Dedicated Acreage: 40 Acres

1. Outline the acreage dedicated to the subject well by colored pencil or hachure marks on the plat below.
2. If more than one lease is dedicated to the well, outline each and identify the ownership thereof (both as to working interest and royalty).
3. If more than one lease of different ownership is dedicated to the well, have the interests of all owners been consolidated by communitization, unitization, force-pooling, etc?

☐ Yes ☐ No If answer is "yes," type of consolidation _____

If answer is "no," list the owners and tract descriptions which have actually been consolidated. (Use reverse side of this form if necessary.) _____

No allowable will be assigned to the well until all interests have been consolidated (by communitization, unitization, forced-pooling, or otherwise) or until a non-standard unit, eliminating such interests, has been approved by the Commission.



CERTIFICATION

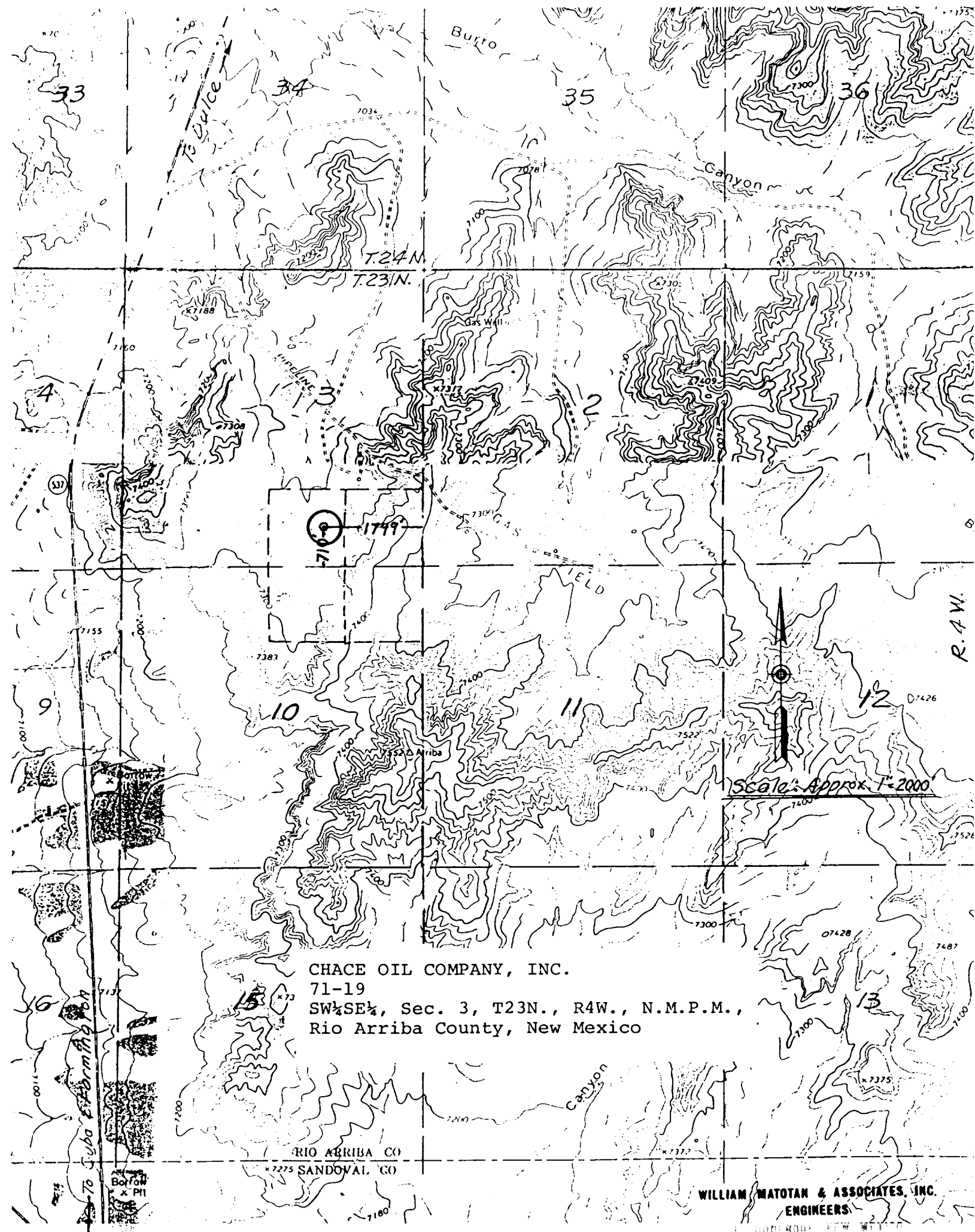
I hereby certify that the information contained herein is true and complete to the best of my knowledge and belief.

Name **Paul J. Matotan**
 Position **Geologist**
 Company **Chace Oil Co**
 Date **1-18-83**

I hereby certify that the well location shown on this plat was plotted from field notes of actual surveys made by me or under my supervision, and that the same is true and correct to the best of my knowledge and belief.

Date Surveyed **January 13, 1983**
 Registered Professional Engineer and/or Land Surveyor

William I. Matotan
 Certificate No. **1593**



CHACE OIL COMPANY, INC.
71-19
SW $\frac{1}{4}$ SE $\frac{1}{4}$, Sec. 3, T23N., R4W., N.M.P.M.,
Rio Arriba County, New Mexico

RIO ARRIBA CO
x 7275 SANDOVAL CO

WILLIAM MATOTAN & ASSOCIATES, INC.
ENGINEERS