

30-039-23212

UNITED STATES
DEPARTMENT OF THE INTERIOR
GEOLOGICAL SURVEY

APPLICATION FOR PERMIT TO DRILL, DEEPEN, OR PLUG BACK

1a. TYPE OF WORK
 DRILL DEEPEN PLUG BACK
 b. TYPE OF WELL
 OIL WELL GAS WELL OTHER Comingled
 SINGLE ZONE MULTIPLE ZONE

2. NAME OF OPERATOR
 William B. Martin and Associates

3. ADDRESS OF OPERATOR
 2110 N. Sullivan, Farmington, N.M. 87401

4. LOCATION OF WELL (Report location clearly and in accordance with any State requirements.)
 At surface
 880' FNL and 680' FEL
 At proposed prod. zone
 Same

14. DISTANCE IN MILES AND DIRECTION FROM NEAREST TOWN OR POST OFFICE
 18 NW of Cuba

15. DISTANCE FROM PROPOSED* LOCATION TO NEAREST PROPERTY OR LEASE LINE, FT. (Also to nearest drlg. unit line, if any)
 680' W

18. DISTANCE FROM PROPOSED LOCATION* TO NEAREST WELL, DRILLING, COMPLETED, OR APPLIED FOR, ON THIS LEASE, FT.
 2060' W

19. PROPOSED DEPTH
 7200'

21. ELEVATIONS (Show whether DF, RT, GR, etc.)
 7014 GR

23. FEDERAL WELL-LOGGING PROGRAM PROPOSED CASING AND CEMENTING PROGRAM

SIZE OF HOLE	SIZE OF CASING	WEIGHT PER FOOT	SETTING DEPTH	QUANTITY OF CEMENT
12 1/2"	8 5/8"	24.00	250	200 sk (236 Ft ³)
7 7/8"	5 1/2"	17.00	7200'	See Operations Plan

5. LEASE DESIGNATION AND SERIAL NO.
 Contract #362

6. IF INDIAN, ALLOTTEE OR TRIBE NAME
 Jicarilla Apache

7. UNIT AGREEMENT NAME

8. FARM OR LEASE NAME

9. WELL NO.
 #13 Martin-Florance

10. FIELD AND POOL, OR WILDCAT
 South Lindrith Gallup
 Dakota Extension

11. SEC., T., R., M., OR BLK. AND SURVEY OR AREA
 A NENE Sec. 8
 T23N R4W

12. COUNTY OR PARISH
 Rio Arriba

13. STATE
 NM

17. NO. OF ACRES ASSIGNED TO THIS WELL
 40

20. ROTARY OR CABLE TOOLS
 Rotary

22. APPROX. DATE WORK WILL START*

RECEIVED
 MAR 24 1983
 U. S. GEOLOGICAL SURVEY
 FARMINGTON, N. M.

DRILLING OPERATIONS AUTHORIZED ARE
 SUBJECT TO COMPLIANCE WITH ATTACHED
 FEDERAL WELL-LOGGING PROGRAM

This action is subject to administrative appeal pursuant to 30 CFR 290.

- Proposed Program:
1. Drill 12 1/2" hole to ± 250'. Run and set 8 5/8" casing. Circulate Cement to surface.
 2. WOC 12 hours.
 3. Install and Pressure Test BOP to 1000 psig.
 4. Drill 7 7/8" hole to T.D. using low solids-low loss mud.
 5. Run and set 5 1/2" casing with stage collars and cement.
 6. Selectively perforate and stimulate Gallup and Dakota Formation.

RECEIVED
 MAY 3 1983
 OIL CON. DIV.
 DIST. 3

IN ABOVE SPACE DESCRIBE PROPOSED PROGRAM: If proposal is to deepen or plug back, give data on present productive zone and proposed new productive zone. If proposal is to drill or deepen directionally, give pertinent data on subsurface locations and measured and true vertical depths. Give blowout preventer program, if any.

24. SIGNED W.B. Martin TITLE Operator DATE March 7, 1983

(This space for Federal or State office use)

PERMIT NO. _____ APPROVAL DATE _____
 APPROVED BY James F. Sims TITLE Assistant Manager DATE _____
 CONDITIONS OF APPROVAL, IF ANY:

APPROVED AS AMENDED
 APR 29 1983
 JAMES F. SIMS
 DISTRICT ENGINEER

ch 2

11333

OIL CONSERVATION DIVISION

STATE OF NEW MEXICO
OIL AND MINERALS DEPARTMENT

P. O. BOX 2048
SANTA FE, NEW MEXICO 87501

Form C-107
Revised 10-1-78

All distances must be from the outer boundaries of the Section.

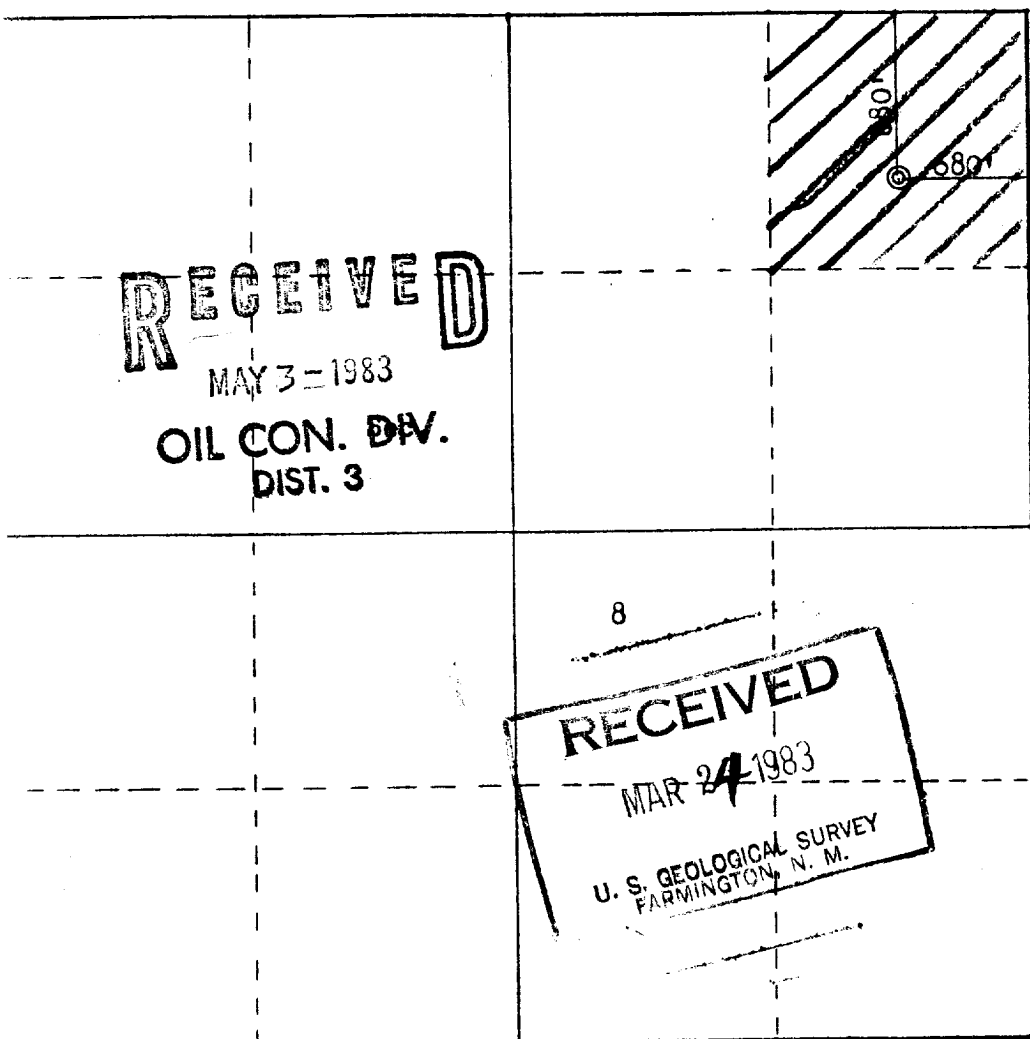
Operator W. B. MARTIN & ASSOCIATES		Lease MARTIN-FLORANCE		Well No. 13
Unit Letter A	Section 8	Township 23N	Range 4W	County Rio Arriba
Actual Footage Location of Well: 880 feet from the North line and 680 feet from the East line				
Ground Level Elev: 7014	Producing Formation Gallup-Dakota Comingle	Pool South Lindroth Gallup Dakota	Dedicated Acreage: 40 Acres	

1. Outline the acreage dedicated to the subject well by colored pencil or hachure marks on the plat below.
2. If more than one lease is dedicated to the well, outline each and identify the ownership thereof (both as to working interest and royalty).
3. If more than one lease of different ownership is dedicated to the well, have the interests of all owners been consolidated by communitization, unitization, force-pooling, etc?

Yes No If answer is "yes," type of consolidation _____

If answer is "no," list the owners and tract descriptions which have actually been consolidated. (Use reverse side of this form if necessary.) _____

No allowable will be assigned to the well until all interests have been consolidated (by communitization, unitization, forced-pooling, or otherwise) or until a non-standard unit, eliminating such interests, has been approved by the Commission.



CERTIFICATION	
I hereby certify that the information contained herein is true and complete to the best of my knowledge and belief.	
Name	<i>Billy Martin</i>
Position	<i>Operator Representative</i>
Company	<i>W. B. Martin and Associates</i>
Date	<i>3/16/83</i>
I hereby certify that the well location shown on this plat was plotted from field notes of actual surveys made by me or under my supervision, and that the same is true and correct to the best of my knowledge and belief.	
Date Surveyed	<i>March 1, 1983</i>
Registered Professional Engineer and Land Surveyor	<i>Fred B. Kerr Jr.</i>
Certificate No.	<i>3950</i>

Scale: 1"=1000'

OPERATIONS PLAN

Re: A.P.D.
 William B. Martin & Associates, Inc
 #13 Martin-Florange
 NE NE Sec. 8 T23N - R4W
 Rio Arriba County, New Mexico

Gentlemen:

In compliance with NTL-6 the following information is being submitted to accompany the Permit to Drill:

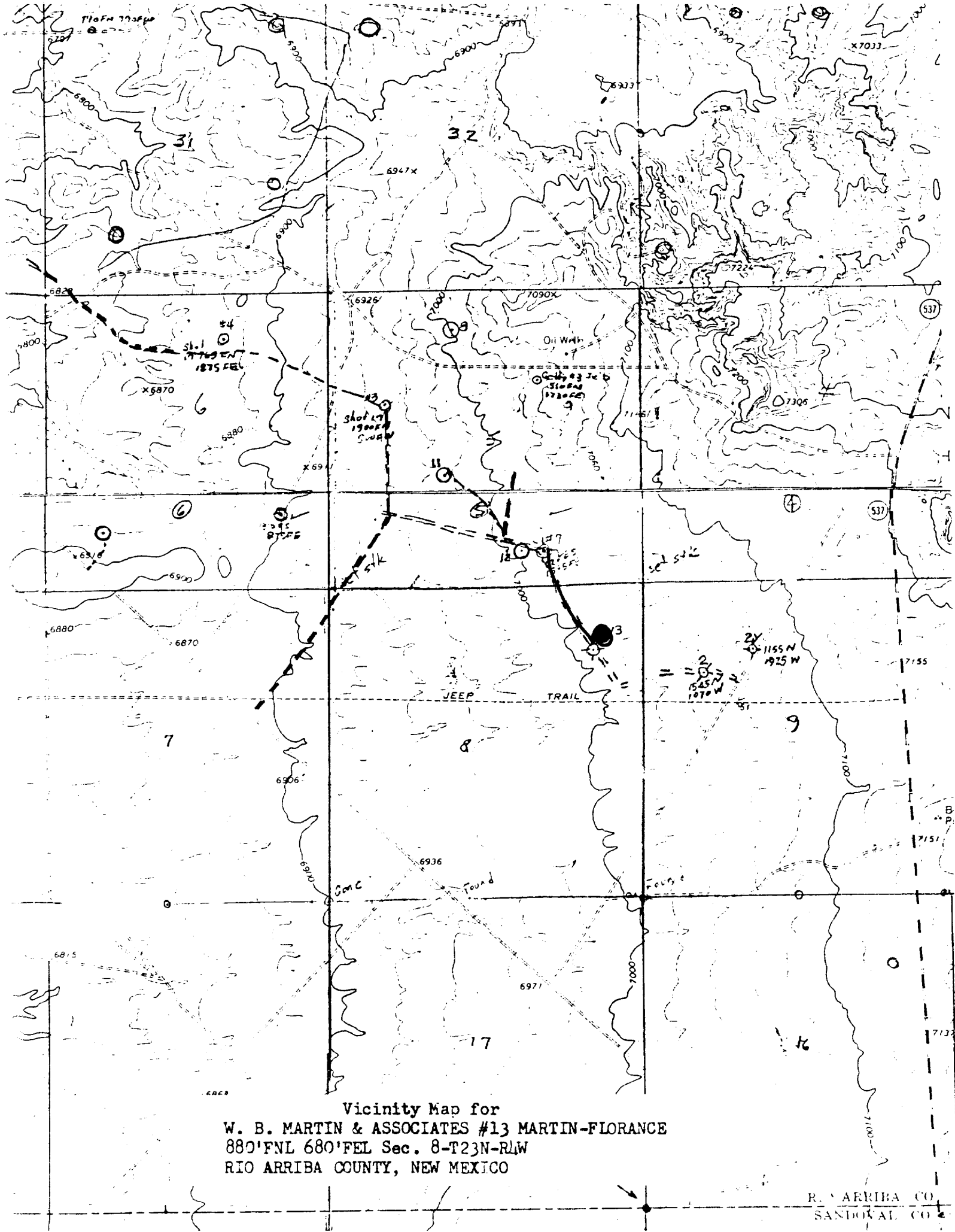
1. Location: 880' FNL and 680' FEL Sec. 8 T23N - R4W
2. Elevation of Unprepared Ground: 7014'
3. Geologic Name of Surface Formation: San Jose
4. Type of Drilling Tools: Surface to T.D. Rotary
5. Proposed Drilling Depth: 7200'
6. Estimated Geologic Markers 7. Anticipated Gas & Oil

Ojo Alamo	2212'	
Pictured Cliffs	2690'	X
Chacra	3042'	
Pointlookout	4835'	X
Gallup	5880'	X
Dakota	6987'	X

8. Casing Program and Setting Depth:

	<u>Size</u>	<u>Weight</u>	<u>Grade</u>	<u>Condition</u>	<u>Setting Depth</u>
Surface	8 5/8"	24.00 lb	J-55	New	250'
Production	5 1/2"	17.00 lb	J-55	New	7200'

9. Casing and Cementing Prognosis:
 Surface casing will be set at 250'. Cement will be circulated to surface using approximately 200 sks (236 ft₃) Class "B" Neat cement containing 2% CaCl₂.
 Production casing will be run to total depth. Three stage collars will be run.
 - 1st Stage - Float collar 7110'
 500 sks 50/50 poz (690 ft₃) 2% gel 6 1/4 # gelsonite
 - 2nd Stage - D.V. tool at 5000'
 250 sks 50/50 poz (345 ft₃) 2% gel 6 1/4 # gelsonite
 - 3rd Stage - D.V. tool at 3000'
 400 sks 50/50 poz (500 ft₃) Class B 2% CaCl₂
 Note: Exact volume of cement to be determined after running Caliper Log.



Vicinity Map for
W. B. MARTIN & ASSOCIATES #13 MARTIN-FLORANCE
880'FNL 680'FEL Sec. 8-T23N-R4W
RIO ARRIBA COUNTY, NEW MEXICO