

UNITED STATES
DEPARTMENT OF THE INTERIOR
GEOLOGICAL SURVEY

APPLICATION FOR PERMIT TO DRILL, DEEPEN OR PLUG BACK

1a. TYPE OF WORK

DRILL ☒DEEPEN ☐PLUG BACK ☐

b. TYPE OF WELL

OIL
WELL ☒GAS
WELL ☐OTHER ☐

2. NAME OF OPERATOR

Chace Oil Company, Inc.

3. ADDRESS OF OPERATOR

313 Washington, SE, Albuquerque, New Mexico 87106

4. LOCATION OF WELL (Report location clearly and in accordance with any State requirements.)

At surface Unit 'C' 710' FNL & 2015' FNL

At proposed prod. zone

14. DISTANCE IN MILES AND DIRECTION FROM NEAREST TOWN OR POST OFFICE

12 miles SW of Lindrith, New Mexico

15. DISTANCE FROM PROPOSED* LOCATION TO NEAREST PROPERTY OR LEASE LINE, FT.

3265' Lease Line

(Also to nearest drlg. unit line, if any) 610' Unit Line

1920

18. DISTANCE FROM PROPOSED LOCATION* TO NEAREST WELL, DRILLING, COMPLETED, OR APPLIED FOR, ON THIS LEASE, FT.

800'

19. PROPOSED DEPTH

7600'

17. NO. OF ACRES ASSIGNED TO THIS WELL

40

21. ELEVATIONS (Show whether DF, RT, GR, etc.)

7305' GL

DRILLING OPERATIONS AUTHORIZED ARE
SUBJECT TO COMPLIANCE WITH ATTACHED

22. APPROX. DATE WORK WILL START*

7-15-83

23.

"GENERAL REQUIREMENTS"

PROPOSED CASING AND CEMENTING PROGRAM

This action is subject to administrative
appeal pursuant to 30 CFR 250.

SIZE OF HOLE	SIZE OF CASING	WEIGHT PER FOOT	SETTING DEPTH	QUANTITY OF CEMENT
9 3/4"	8 5/8"	22# (J-55)	225'	225 sxs (405 CF) Class B cement
7 7/8"	4 1/2"	11.6# (N-80)	7600'	1st stage: 750 sxs (1350 CF) 50/50 pozmix. 2nd stage: 550 sxs (990 CF) 40/60 pozmix, 12% gel. 22 sxs (40 CF) Class B cement

Drill 230' of 9 3/4" surface hole. Set 225' of 8 5/8" casing. Cement to surface with 225 sxs (405 CF) cement. Use an oil base mud, (15% oil), and Shaeffer 5000# standard doublegate hydraulic BOP. Drill 7 7/8" hole to 7600' to test Dakota formation.

Wasatch formation on surface. Estimated tops: Ojo-2580'; Pictured Cliffs-3025', Chacra-3375'; Cliff House-4560'; Pt. Lookout-5090'; Gallup-6185'; Tootito-6845'; Greenhorn-7165'; Dakota 'A'-7250'; Dakota 'D'-7390'; Burro Canyon-7495'.

D. V. Tool @ 3075'. Float Collar @ 7570'.

IN ABOVE SPACE DESCRIBE PROPOSED PROGRAM: If proposal is to deepen or plug back, give data on present productive zone and proposed new productive zone. If proposal is to drill or deepen directionally, give pertinent data on subsurface locations and measured and true vertical depths. Give blowout preventer program, if any.

24.

SIGNED

TITLE Geologist

DATE

7-12-83

(This space for Federal or State office use)

PERMIT NO.

APPROVAL DATE

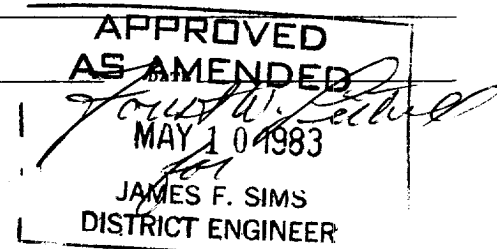
APPROVED BY

TITLE

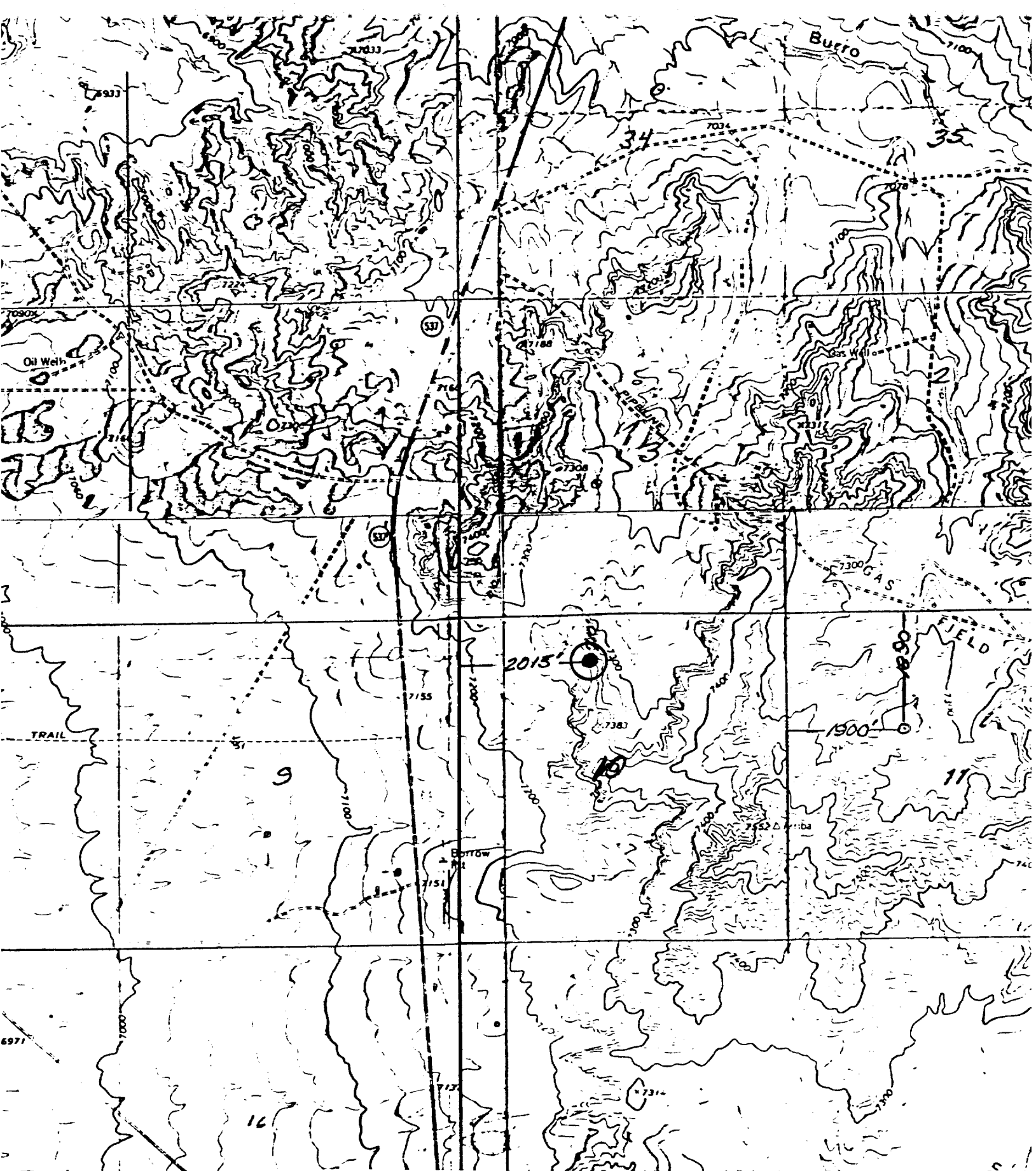
CONDITIONS OF APPROVAL, IF ANY:

*See Instructions On Reverse Side

NMOCG



Certificate No.
1463



CHACE OIL COMPANY, INC.

71-12 (VIII)

NE $\frac{1}{4}$ NW $\frac{1}{4}$, Sec. 10, T23N, R4W, N.M.P.M.,
Rio Arriba County, New Mexico

RI

SANDOVAL CO

Borrow
Pit

7275 SANDOVAL CO