

UNITED STATES
DEPARTMENT OF THE INTERIOR
BUREAU OF LAND MANAGEMENT

SUBMIT IN TRIPLICATE*
(Other instructions on
reverse side)

Form approved.
Budget Bureau No. 1004-0136
Expires August 31, 1985

APPLICATION FOR PERMIT TO DRILL, DEEPEN, OR PLUG BACK

1a. TYPE OF WORK

DRILL ☒

DEEPEN ☒

PLUG BACK ☐

b. TYPE OF WELL

OIL WELL ☒

GAS WELL ☐

OTHER ☐

SINGLE ZONE ☐

MULTIPLE ZONE ☐

2. NAME OF OPERATOR

Noel Reynolds, c/o Ned Dollar, Agent

3. ADDRESS OF OPERATOR

P. O. Box 399 Aztec, NM 87410

4. LOCATION OF WELL (Report location clearly and in accordance with any State requirements.)

At surface

495' FNL & 325' FWL. Section 5, T24N., R1E.

At proposed prod. zone

14. DISTANCE IN MILES AND DIRECTION FROM NEAREST TOWN OR POST OFFICE*

Approximately 2 miles south of Llaves, New Mexico

15. DISTANCE FROM PROPOSED* LOCATION TO NEAREST PROPERTY OR LEASE LINE, FT. (Also to nearest drlg. unit line, if any)

495

16. NO. OF ACRES IN LEASE

557.98

17. NO. OF ACRES ASSIGNED TO THIS WELL

160

18. DISTANCE FROM PROPOSED LOCATION* TO NEAREST WELL, DRILLING, COMPLETED, OR APPLIED FOR, ON THIS LEASE, FT.

19. PROPOSED DEPTH

4700'

20. ROTARY OR CABLE TOOLS

Rotary--Air

21. ELEVATIONS (Show whether DF, RT, GR, etc.)

7033' GR

DRILLING OPERATIONS AUTHORIZED ARE

SUBJECT TO COMPLIANCE WITH ATTACHED PROPOSED CASING AND CEMENTING PROGRAM GENERAL REQUIREMENTS

22. APPROX. DATE WORK WILL START*

Upon Approval by BLM

23.

SIZE OF HOLE	SIZE OF CASING	WEIGHT PER FOOT	SETTING DEPTH	QUANTITY OF CEMENT
13-3/4"	9-5/8"	J-55	150'-200'	150 sx Class B
8-3/4"	7"	K-55	3100'-3300'	200 sx Class B
6-3/4"	4-1/2"	J-55	4000' +	

Drill to a depth of 31-3300' Set 7" casing and cement. Complete drilling with air and set liner if necessary. A BOP will be utilized.

(6-1/4") hole to be drilled with air.

JUN 11 1985

OIL CON. DIV.
DIST. 3

IN ABOVE SPACE DESCRIBE PROPOSED PROGRAM: If proposal is to deepen or plug back, give data on present productive zone and proposed new productive zone. If proposal is to drill or deepen directionally, give pertinent data on subsurface locations and measured and true vertical depths. Give blowout preventer program, if any.

24.

SIGNED

Ned Dollar

TITLE

Agent

DATE April 29, 1985

(This space for Federal or State office use)

This action is subject to technical and procedural review pursuant to 43 CFR 3165.3 and appeal pursuant to 43 CFR 3165.4.

APPROVAL DATE

APPROVED
AS AMENDED

DATE JUN 10 1985

/s/ J. Stan McKee

Wm. MILLENBACH
AREA MANAGER

*See Instructions On Reverse Side

All distances must be from the outer boundaries of the Section.

Owner Noel Reynolds		Lease NM33036		Well No. #1
Section D	Section 5	Township 24 North	Range 1 E	County Rio Arriba
Location of Well: 825 feet from the West line and 495 feet from the North line				
Level Elev. 7033	Producing Formation Tocito	Pool Puerto Chiquito East	Dedicated Acreage: 160 Acres	

1. Outline the acreage dedicated to the subject well by colored pencil or hatchure marks on the plat below.
2. If more than one lease is dedicated to the well, outline each and identify the ownership thereof (both as to working interest and royalty).
3. If more than one lease of different ownership is dedicated to the well, have the interests of all owners been consolidated by communitization, unitization, force-pooling, etc?

☐ Yes ☒ No If answer is "yes," type of consolidation _____

If answer is "no," list the owners and tract descriptions which have actually been consolidated. (Use reverse side of this form if necessary.) _____

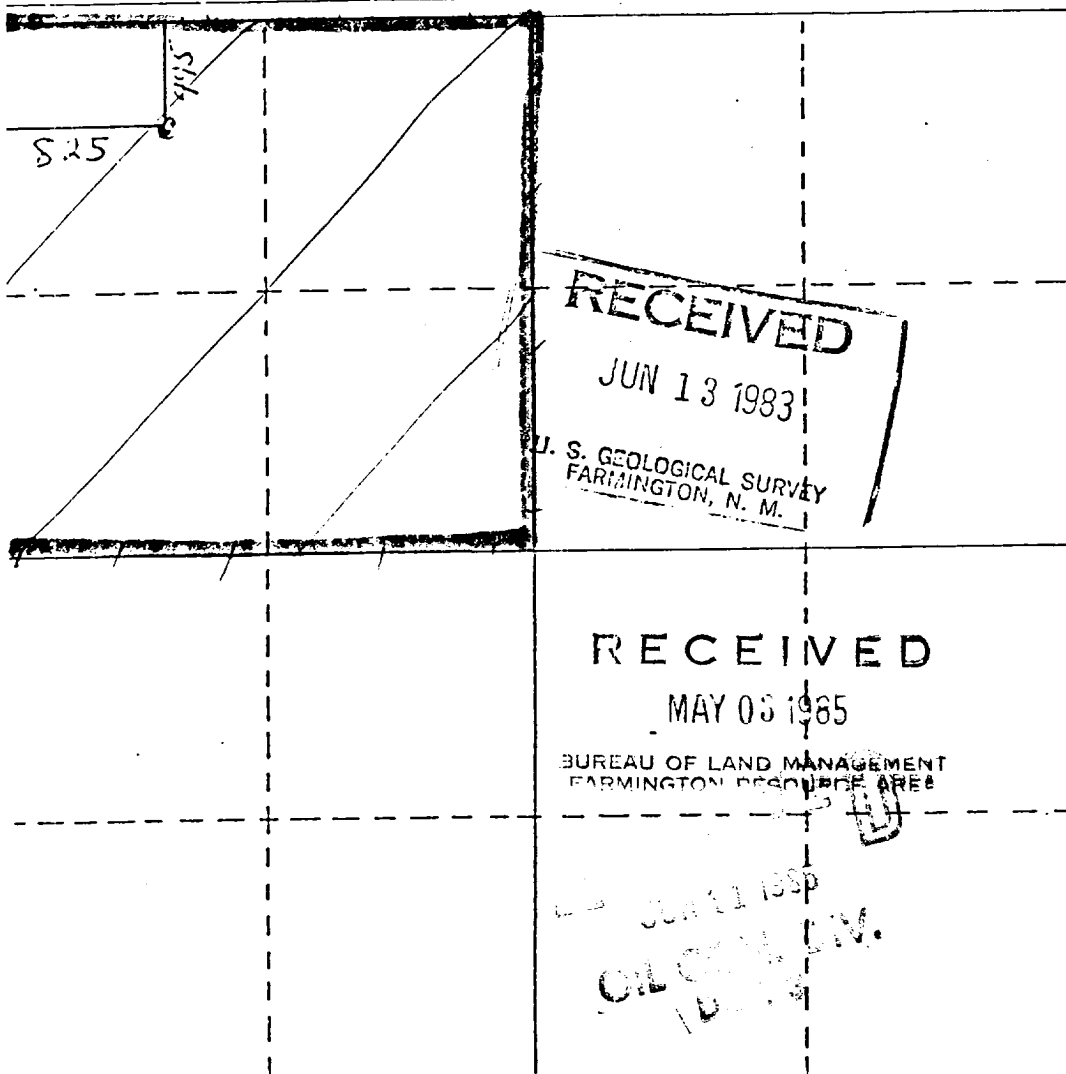
No allowable will be assigned to the well until all interests have been consolidated (by communitization, unitization, forced-pooling, or otherwise) or until a non-standard unit, eliminating such interests, has been approved by the Division.

RECEIVED

JUN 27 1983

OIL CON. DIV.

DIST. 3



CERTIFICATION

I hereby certify that the information contained herein is true and complete to the best of my knowledge and belief.

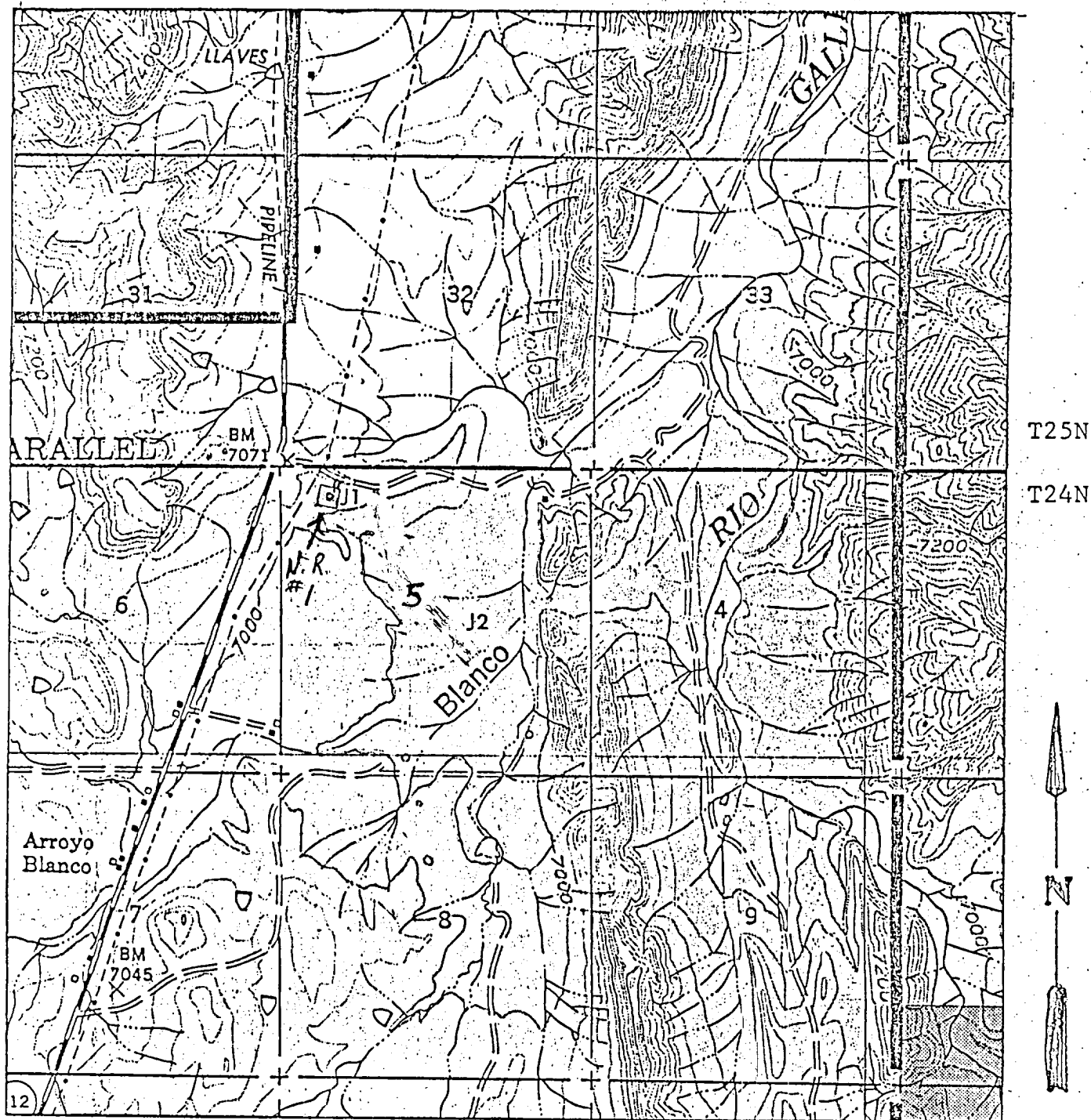
Name
Ned Dollar
Position
Agent
Company
Noel Reynolds
Date
April 29, 1985

I hereby certify that the well location shown on this plat was plotted from field notes of actual surveys made by me or under my supervision, and that the same is true and correct to the best of my knowledge and belief.

Date
April 29, 1985
Registered Professional Engineer and Land Surveyor
WILLIAM A. ALBERT
Certificate No. _____

Figure 1

R 1 E



USFS LLAVES, NEW MEXICO, 1972
 Wells and Access NM33036 15' Planimetric Quadrangle
 Scale 2" = 5280'

JICARILLA ARCHAEOLOGICAL SERVICES REPORT CR83-28, JUNE 17, 1983