

UNITED STATES
DEPARTMENT OF THE INTERIOR
GEOLOGICAL SURVEY

APPLICATION FOR PERMIT TO DRILL, DEEPEN, OR PLUG BACK

1a. TYPE OF WORK

DRILL ☒DEEPEN ☐ CON. DLV. BACK ☐

b. TYPE OF WELL

OIL
WELL ☒GAS
WELL ☐OTHER ☐SINGLE
ZONE ☐MULTIPLE
ZONE ☒

2. NAME OF OPERATOR

Chace Oil Company, Inc.

3. ADDRESS OF OPERATOR

313 Washington, SE, Albuquerque, NM 87108

4. LOCATION OF WELL (Report location clearly and in accordance with any State requirements.)

At surface Unit 'J' - 2310' FSL & 2270' FSL

At proposed prod. zone

14. DISTANCE IN MILES AND DIRECTION FROM NEAREST TOWN OR POST OFFICE*

12 miles SW of Lindrith, New Mexico

15. DISTANCE FROM PROPOSED*
LOCATION TO NEAREST
PROPERTY OR LEASE LINE, FT.
(Also to nearest drlg. unit line, if any)

2270' lease line

330' unit line

18. DISTANCE FROM PROPOSED LOCATION*
TO NEAREST WELL, DRILLING, COMPLETED,
OR APPLIED FOR, ON THIS LEASE, FT.

1600'

16. NO. OF ACRES IN LEASE

1895.28

19. PROPOSED DEPTH

7600'

17. NO. OF ACRES ASSIGNED
TO THIS WELL

40

20. ROTARY OR CABLE TOOLS

Rotary

22. APPROX. DATE WORK WILL START*

August 15, 1983

21. ELEVATIONS (Show whether DF, RT, GR, etc.)

7313' GL

23.

This action is subject to administrative
approval pursuant to 30 CFR 250.225 sxs Class B cement (405 CF)
1st stage: 750 sxs (1350 CF)
50/50 pozmix. 2nd stage: 525
sxs (945 CF) 40/60 pozmix, 12%
gel. 50 sxs (90 CF) Class B
cement.

Drill 230' of 9 3/4" surface hole. Set 225' of 8 5/8" casing; cement to surface with 225 sxs cement. Use an oil base mud (15% oil) and Schaeffer 5000# standard doublegate hydraulic BOP. Drill 7 7/8" hole to 7600' to test Dakota formation. Wasatch formation on surface. Estimated tops: Ojo-2585', Pictured Cliffs-3010', Chacra-3360', Cliff House-4555', Point Lookout-5125', Gallup-6170', Tocito-6820', Greenhorn-7145', Dakota 'A'-7235', Dakota 'D'-7375', Burro Canyon 7480'. D. V. tool @ 3060'. Float collar @ 7570'.

IN ABOVE SPACE DESCRIBE PROPOSED PROGRAM: If proposal is to deepen or plug back, give data on present productive zone and proposed new productive zone. If proposal is to drill or deepen directionally, give pertinent data on subsurface locations and measured and true vertical depths. Give blowout preventer program, if any.

24.

SIGNED

(This space for Federal or State office use)

PERMIT NO.

APPROVED BY

CONDITIONS OF APPROVAL, IF ANY:

TITLE Geologist

DATE

July 18, 1983

APPROVAL DATE

TITLE

APPROVED

AS AMENDED

DATE

AUG 24 1983

AREA MANAGER
FARMINGTON RESOURCE AREA

*See Instructions On Reverse Side

All distances must be from the outer boundaries of the Section.

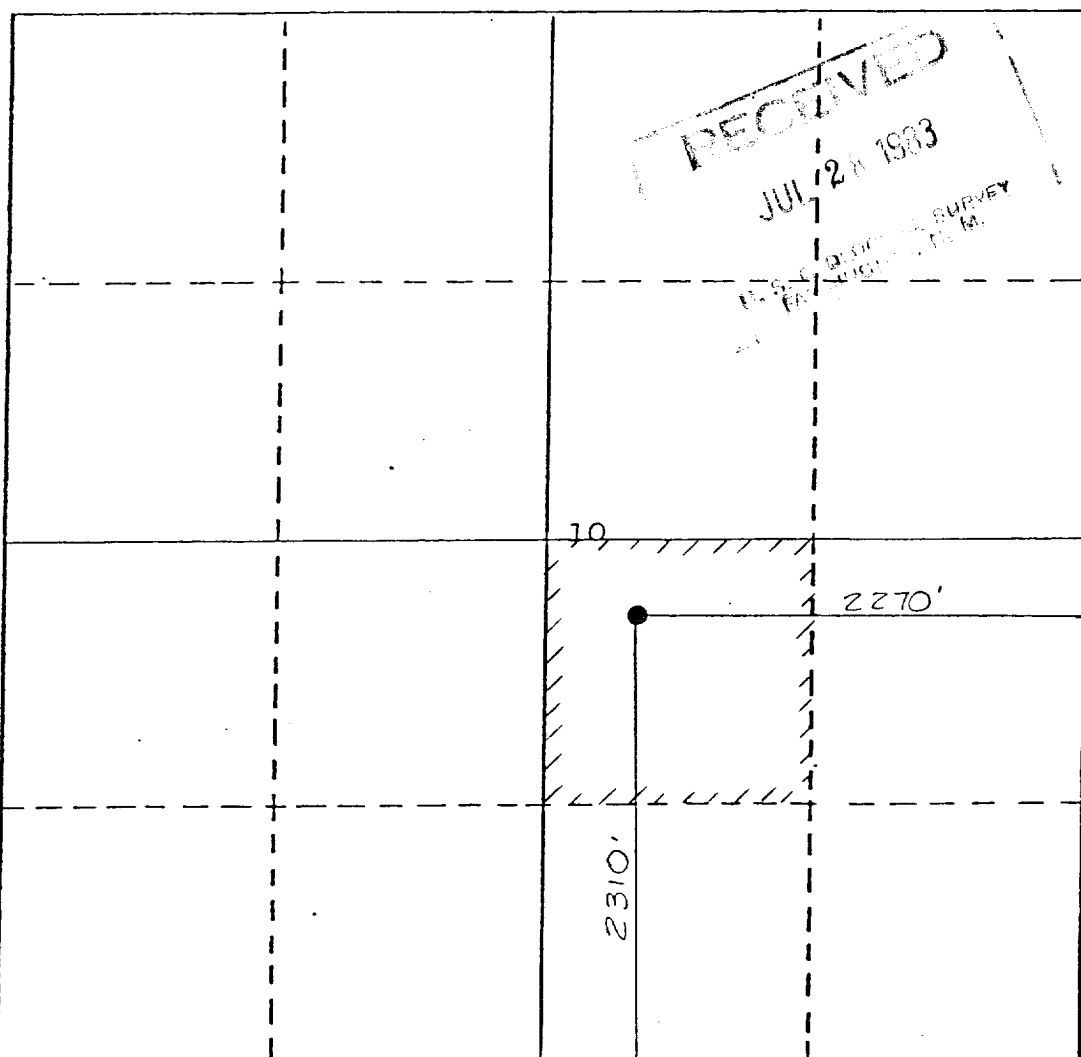
Operator CHACE OIL COMPANY, INC.			Lease JICARILLA TRIBAL CONTRACT #71		Well No. 21
Unit Letter J	Section 10	Township 23 NORTH	Range 4 WEST	County RIO ARriba	
Actual Footage Location of Well: 2310 feet from the SOUTH line and 2270 feet from the EAST line					
Ground Level Elev. 7313	Producing Formation GALLUP - DAKOTA		Pool SOUTH LINDRITH GALLUP DAKOTA		Dedicated Acreage: 40 Acres

1. Outline the acreage dedicated to the subject well by colored pencil or hatchure marks on the plat below.
2. If more than one lease is dedicated to the well, outline each and identify the ownership thereof (both as to working interest and royalty).
3. If more than one lease of different ownership is dedicated to the well, have the interests of all owners been consolidated by communitization, unitization, force-pooling, etc?

☐ Yes ☐ No If answer is "yes," type of consolidation _____

If answer is "no," list the owners and tract descriptions which have actually been consolidated. (Use reverse side of this form if necessary.) _____

No allowable will be assigned to the well until all interests have been consolidated (by communitization, unitization, forced-pooling, or otherwise) or until a non-standard unit, eliminating such interests, has been approved by the Division



CERTIFICATION

I hereby certify that the information contained herein is true and complete to the best of my knowledge and belief.

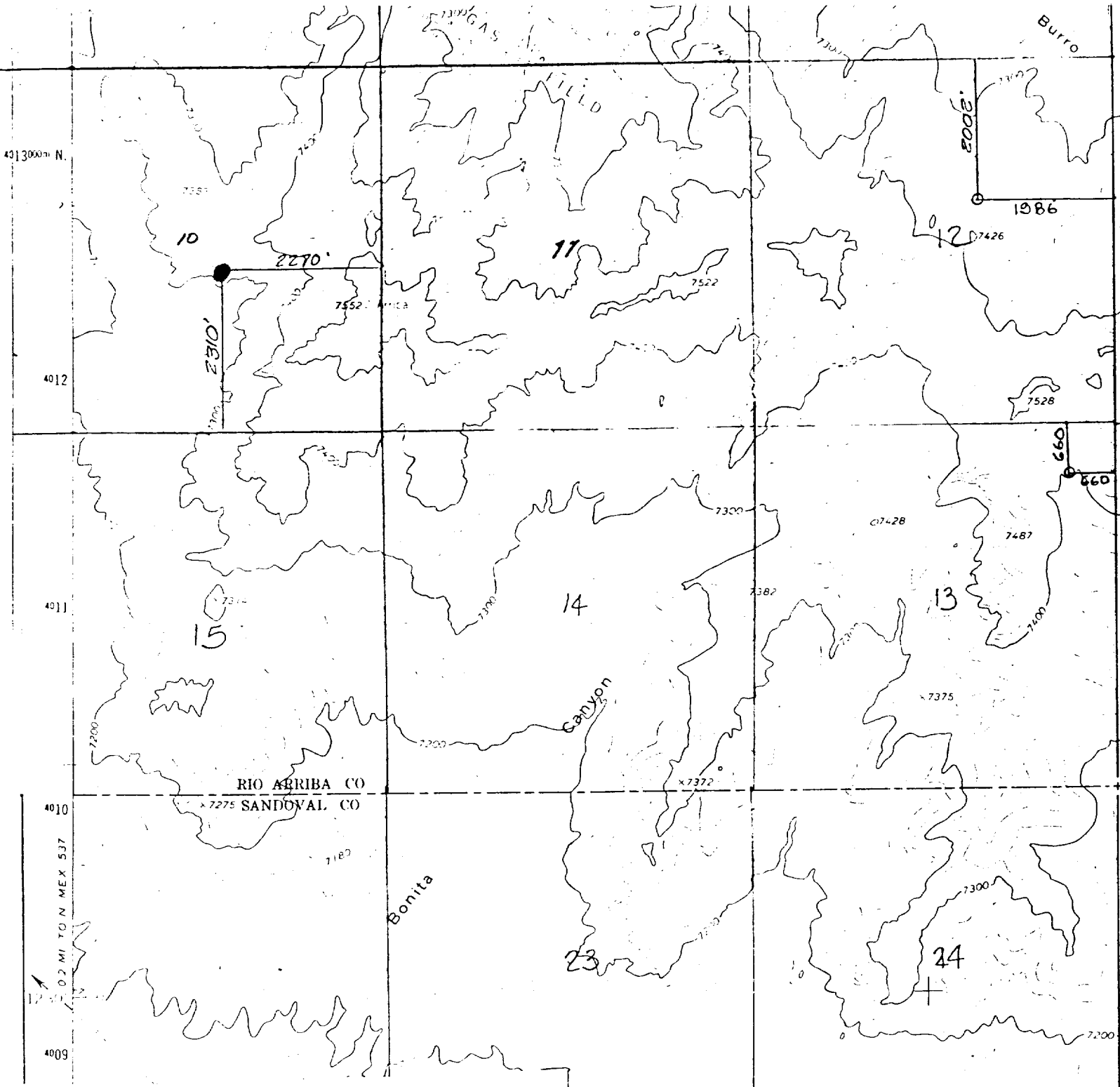
Name Ross Lasterling
Position LANDMAN
Company CHACE OIL COMPANY
Date 7-18-83

I hereby certify that the well location shown on this plat was plotted from field notes of a survey made by me or under my supervision, and that the same is correct to the best of my knowledge.

Date Surveyed June 30, 1983
Registered Professional Engineer and/or Land Surveyor

Michael Daly

Certificate No. 5992



CHACE OIL COMPANY, INC.
71-21
NW $\frac{1}{4}$ SE $\frac{1}{4}$, Sec. 10, T23N, R4W, N.M.P.M.,
Rio Arriba County, New Mexico

