

UNITED STATES
DEPARTMENT OF THE INTERIOR
GEOLOGICAL SURVEY

30-039-23283

APPLICATION FOR PERMIT TO DRILL, DEEPEN, OR PLUG BACK

1a. TYPE OF WORK

DRILL ☒DEEPEN ☐PLUG BACK ☐

b. TYPE OF WELL

OIL
WELL ☐GAS
WELL ☐

OTHER Commingled

SINGLE
ZONE ☐MULTIPLE
ZONE ☒

2. NAME OF OPERATOR

W.B. Martin & Associates

3. ADDRESS OF OPERATOR

2110 N. Sullivan, Farmington, New Mexico 87401

4. LOCATION OF WELL (Report location clearly and in accordance with any applicable requirements)

At surface

1700' FNL and 1830' FEL

At proposed prod. zone

Same

5. DISTANCE IN MILES AND DIRECTION FROM NEAREST TOWN OR POST OFFICE*

18 miles NW of Cuba

15. DISTANCE FROM PROPOSED*

LOCATION TO NEAREST

PROPERTY OR LEASE LINE, FT.

(Also to nearest drlg. unit line, if any)

1830' FEL

16. DISTANCE FROM PROPOSED LOCATION*
TO NEAREST WELL, DRILLING COMPLETED,
OR APPLIED FOR, ON THIS LEASE, FT.

1640'

21. ELEVATIONS (Show whether DP, RT, GR, etc.)

6980' GR

DRILLING OPERATIONS AUTHORIZED ARE
SUBJECT TO COMPLIANCE WITH ATTACHED

"GENERAL REQUIREMENTS"

PROPOSED CASING AND CEMENTING PROGRAM

This action is subject to ~~compliance~~

approval pursuant to 30 DFR 200.

SIZE OF HOLE

SIZE OF CASING

WEIGHT PER FOOT

SETTING DEPTH

QUANTITY OF CEMENT

12 1/4"

8 5/8" OD J55

24 lbs

250'

236 ft³ (200 sks)

7 7/8"

5 1/2" OD J55

17 lbs

7200'

See Operations Plan

Proposed Program: 1. Drill 12 1/4" hole to \pm 250'. Run and set 8 5/8" casing.
Circulate Cement to surface.

2. WOC 12 hours.

3. Install and Pressure Test BOP to 1000 psig.

4. Drill 7 7/8" hole to T.D. using low solids-low water loss mud.

5. Run and set 5 1/2" casing with stage collars and cement.

6. Selectively perforate and stimulate Gallup & Dakota Formation.

RECEIVED

AUG 30 1983

OIL CON. DIV.
DIST. 3

* ABOVE SPACE DESCRIBE PROPOSED PROGRAM: If proposal is to deepen or plug back, give data on present productive zone and proposed new productive zone. If proposal is to drill or deepen directionally, give pertinent data on subsurface locations and measured and true vertical depths. Give blowout preventer program, if any.

24.

SIGNED

W B Martin

TITLE

Operator

DATE

6-9-83

(This space for Federal or State office use)

PERMIT NO.

APPROVAL DATE

APPROVED BY

TITLE

CONDITIONS OF APPROVAL, IF ANY:

dzt

APPROVED

AS AMENDED

DATE

AUG 26 1983

Robert Moore
AREA MANAGER
FARMINGTON RESOURCE AREA

NMCCG

OIL CONSERVATION DIVISION

STATE OF NEW MEXICO
OIL AND MINERALS DEPARTMENTP. O. BOX 2048
SANTA FE, NEW MEXICO 87501Form C-102
Revised 10-1-78

All distances must be from the outer boundaries of the Section.

Operator W. B. MARTIN & ASSOCIATES, INC.			Lease MARTIN-FLORENCE		Well No. 16
Unit Letter G	Section 8	Township 23N	Range 4W	County Rio Arriba	
Actual Footage Location of Well: 1700 feet from the North line and 1830 feet from the East line Ground Level Elev: 6980 Producing Formation Gallup Dakota Comp. cgl. S. Smith Limestone Pool Gallup Dakota Dedicated Acreage: 40 Acres					

1. Outline the acreage dedicated to the subject well by colored pencil or hatchure marks on the plat below.
2. If more than one lease is dedicated to the well, outline each and identify the ownership thereof (both as to working interest and royalty).
3. If more than one lease of different ownership is dedicated to the well, have the interests of all owners been consolidated by communitization, unitization, force-pooling, etc?

☐ Yes ☒ No If answer is "yes," type of consolidation

RECEIVED
AUG 30 1983
OIL CON. DIV.

If answer is "no," list the owners and tract descriptions which have actually been consolidated. (Use reverse side of this form if necessary.)

No allowable will be assigned to the well until all interests have been consolidated (by communitization, unitization, forced-pooling, or otherwise) or until a non-standard unit, eliminating such interests, has been approved by the Commission.

		1700' 1830'	
		Sec. 8	
<p>RECEIVED JUN 10 1983 U. S. GEOLOGICAL SURVEY FARMINGTON, N. M.</p>			

Scale: 1"=1000'

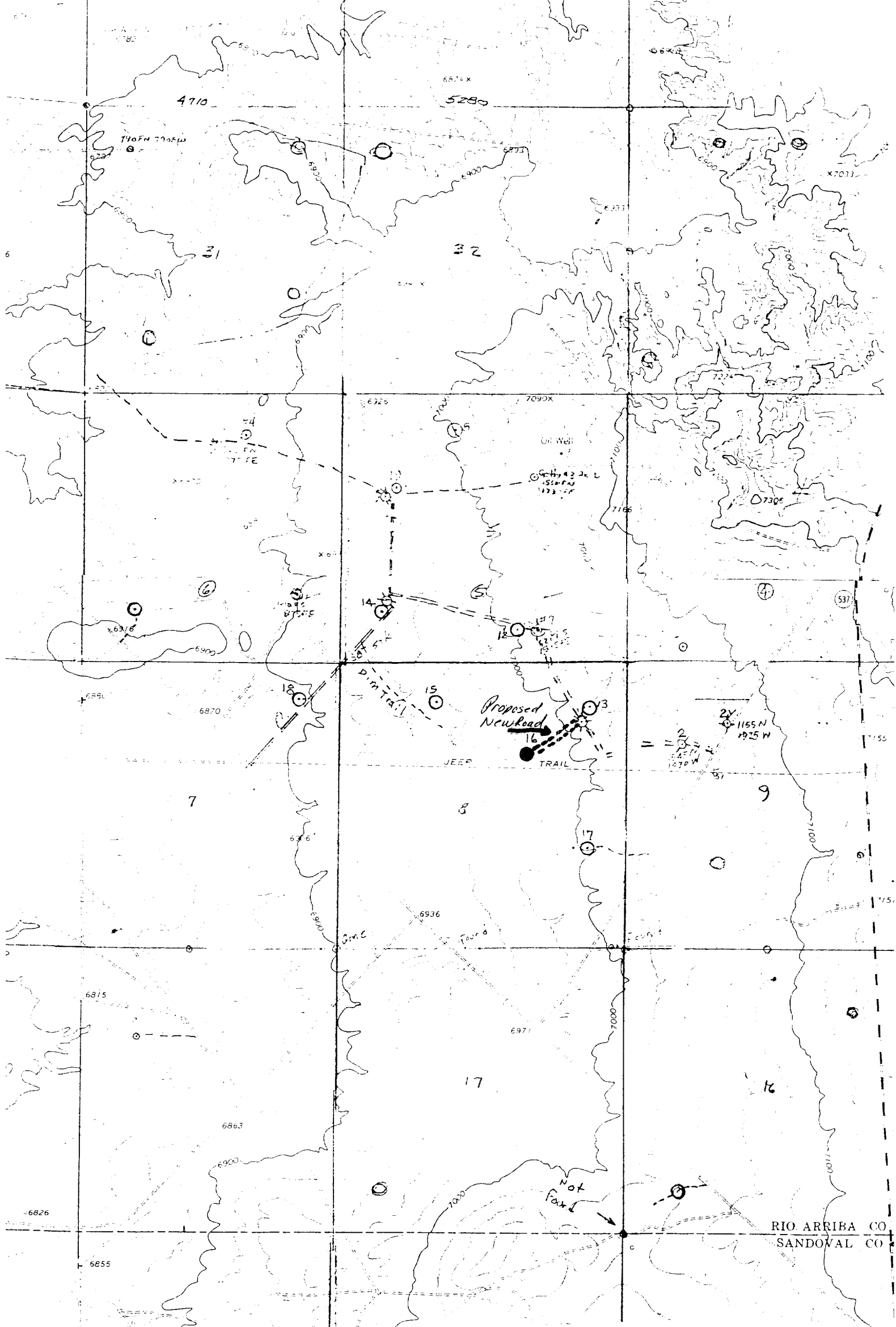
CERTIFICATION

I hereby certify that the information contained herein is true and complete to the best of my knowledge and belief.

Name: Billy Martin
 Position: Operator/Representative
 Company: W. B. Martin & Associates Inc.
 Date: June 6, 1983

I hereby certify that the well location shown on this plat was plotted from field notes of actual surveys made by me or under my supervision, and that the same is true and correct to the best of my knowledge and belief.

Date Surveyed: May 31, 1983
 Registered Professional Engineer and Land Surveyor
Fred B. Kerr Jr.
 Certificate No. 3950



Vicinity Map for
W. B. MARTIN & ASSOC., INC. #16 MARTIN-FLORANCE
1700'FNL 1830'FEL Sec. 8-T23N-RLW
RIO ARriba COUNTY, NEW MEXICO

RIO ARriba CO
SANDOVAL CO